

# Converting Colors

Hex(CB9A9A)

Have a look what the booklet for  
Hex(CB9A9A) contains.

<b>Hex(CB9A9A)</b> .....	3
<i><b>Conversions</b></i> .....	4
<i><b>Details</b></i> .....	6
<i><b>Harmonies</b></i> .....	11
<i><b>Previews</b></i> .....	23
<i><b>Color Blindness Simulation</b></i> .....	26
<i><b>CSS Examples</b></i> .....	29

# **Color**

**Hex(CB9A9A)**

# Conversions

## Conversions Part 1

Format	Color
Hex	CB9A9A
RGB	203, 154, 154
RGB Percent	80%, 60%, 60%
CMY	0.2039, 0.3961, 0.3961
CMYK	0.00, 0.24, 0.24, 0.20
HSL	0°, 32%, 70%
HSV	0°, 24%, 80%
XYZ	42.0169, 38.1408, 35.7192
YIQ	168.6510, 29.2040, 10.3880

# Conversions

## Conversions Part 2

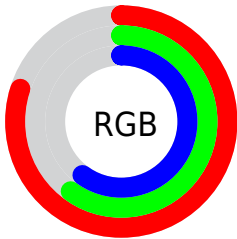
<b>Format</b>	<b>Color</b>
R <sub>Y</sub> B	203, 154, 154
Decimal	13343386
CIE Lab	68.12, 18.28, 7.11
CIE LCh	68, 19.617, 21.238
Yxy	38.1408, 0.3626, 0.3291
Android (android.graphics.Color)	4291533466 (0xFFCB9A9A)
YUV	168.6510, -7.2229, 30.1241
Hunter-Lab	61.7582, 13.3647, 8.9391

# Details

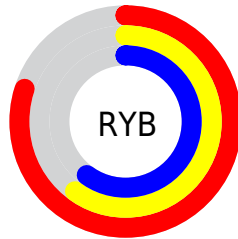
The Hex color **CB9A9A** is a light color, and the websafe version is hex **CC9999**. A complement of this color would be **9ACBCB**, and the grayscale version is **A9A9A9**.

A 20% lighter version of the original color is **FFD1D0**, and **946767** is the 20% darker color. If you saturate the color by 10%, you get **CB8686**, and if you desaturate by 10%, it is **CBAEAE**.

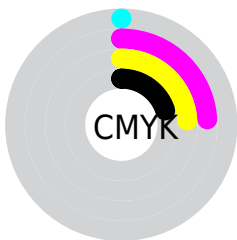
# Distribution



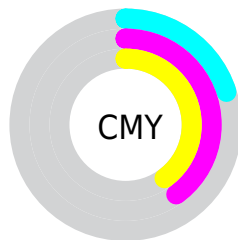
- Red (80%)
- Green (60%)
- Blue (60%)



- Red (80%)
- Yellow (60%)
- Blue (60%)



- Cyan (0%)
- Magenta (24%)
- Yellow (24%)
- Black (20%)



- Cyan (20%)
- Magenta (40%)
- Yellow (40%)

# Brightness & Saturation Gradients

These gradients show how the Hex color CB9A9A changes by changing the brightness by 10 percent. The first figure shows a shift by +10% for each color and the second figure -10%.

Similar to the brightness gradients but the following saturation gradients show a change of the Hex color CB9A9A by changing the saturation by 10% instead.



 CB9A9A

 CB9A9A

FFFFFF

 AF8080

 FFD1D0

 946767

 FFEDED

 794E4F

 603738

 472123

 2F0C0D

 160000

 000000

 CB9A9A

 CB9A9A

 CB8686

 CBAEAE

 CB7171

 CBC3C3

 CB5D5D

 CBD7D7

 CB4949

 CBEBEB

 CB3535

 CBFFFF

 CB2020

 CB0C0C

 CB0000

# Harmonies

## Analogous

The Analogous color harmony consists of three colors that are next to each other on the color wheel.



C69AAC



CB9A9A



C69E8B

# Triad

The Triadic color harmony groups three colors that are evenly spaced from another and form a triangle on the color wheel.



CB9A9A



92AD8F



8BA9C9

# Complementary

The Complementary color scheme is a pair of colors which are on the opposite of each other on the color wheel.



CB9A9A



9ACBCB

# Split Complementary

Split-complementary colors differ from the complementary color scheme. The scheme consists of three colors, the original color and two neighbors of the complement color.



7AAEC1



CB9A9A



80B0A0

# Square

The Square scheme is like the rectangle color scheme, but the four colors are evenly spaced on the color wheel.



CB9A9A



A6A985



76B0B2



A2A3C7

# Rectangle

The Rectangle color scheme consists of four colors that form a rectangle on the color wheel.



CB9A9A



BEA185



76B0B2



84ABC7



# Sweetspot

The Sweet Spot groups the original color and five complimentary colors.



CB9A9A



FFEDED



CB9ACB



807575



000000



808080



# Same Dimension

The Same Dimension uses a secret algorithm to generate beautiful new colors.



CB9A9A



FFB5B5



CBB39A



665C5C



A60000



260000



# Inverse Universe

The Inverse Universe completely reimagines the original color for something new.



9ACBCB



B5FFFF



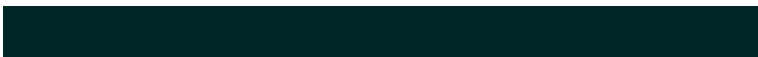
9AB3CB



5C6666



00A6A6

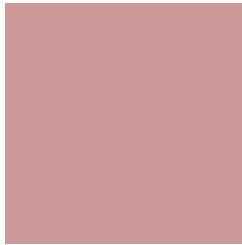


002626



# Previews

## White Background



This preview shows how the Hex color CB9A9A looks on a white background.

## Color Contrast Check

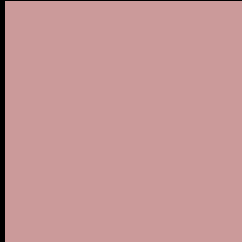
Large Text (above 18pt) WCAG AA × Fail

Any Text WCAG AA × Fail

Large Text (above 18pt) WCAG AAA × Fail

Any Text WCAG AAA × Fail

# Black Background



This preview shows how the Hex color CB9A9A looks on a black background.

## Color Contrast Check

Large Text (above 18pt) WCAG AA ✓ Pass

Any Text WCAG AA ✓ Pass

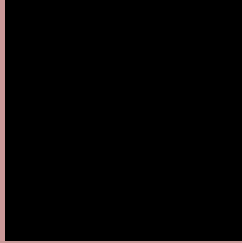
Large Text (above 18pt) WCAG AAA ✓ Pass

Any Text WCAG AAA ✓ Pass

If you want to check with other color combinations, try the [Color Contrast Checker](#).



## Hex CB9A9A Background



This preview shows how black text looks on a background with the Hex color CB9A9A.




This preview shows how white text looks on a background with the Hex color CB9A9A.

# Color Blindness Simulation

Color vision deficiency is a very complex topic, and I could not describe the different causes any better than Wikipedia does, so if you want to learn more, you should check out their [article about color blindness](#).

## Dichromacy





**Tritanopia**  
CC98A4

# Trichromacy



**Original Color**  
CB9A9A

**Protanomaly**  
B7A29E

**Deuteranomaly**  
C19E99

**Tritanomaly**  
CC99A0

# Monochromacy



**Original Color**  
CB9A9A

**Achromatopsia**  
A9A9A9

**Achromatomaly**  
B5A4A4

# CSS Examples

## Text

The CSS property to change the color of the text to Hex CB9A9A is called "color". The color property can be set on classes, ids or directly on the HTML element.

This example shows how text in the color #CB9A9A looks like.

```
.text, #text, p{  
    color:#CB9A9A  
}
```

If you want to add a text shadow in that color use the text-shadow property, you can generate a text shadow directly with our [CSS Text Shadow Generator](#).

Here you see how black text with a 4 pixel #CB9A9A colored shadow looks like.

```
.shadow{ text-shadow: 4px 4px 2px #CB9A9A
}
```

## Border

The CSS property to change the border of an element to Hex CB9A9A is called "border". The border property can be set on classes, ids or directly on the HTML element.

This example shows the color as border, it can be applied via the CSS property "border" or "border-color".

```
.border, #border, table{ border:4px solid
#CB9A9A }
```

If only the border color should be changed use the property `border-color`.

```
.border{ border-color:#CB9A9A }
```

If you want to add a box shadow in that color use:

Here you see how a box with a 4 pixel #CB9A9A colored shadow looks like.

```
.boxshadow{ -moz-box-shadow:4px 4px 4px  
4px #CB9A9A; -webkit-box-shadow:4px 4px  
4px 4px #CB9A9A; box-shadow:4px 4px 4px  
4px #CB9A9A }
```

# Background

The CSS property to change the background color of an element to Hex CB9A9A is called "background". The background property can be set on classes, ids or directly on the HTML element.

```
.background, #background, body{  
background:#CB9A9A }
```

If only the background color should be changed can be used:

```
.background{ background-color:#CB9A9A }
```

This example shows the color as background, it is applied via the CSS property "background".

To optimize and compress your CSS code, you can use our [online CSS compressor and optimizer](#) based on csstidy. If you want to create a linear or radial gradient as background or border, check our [CSS Gradient Generator](#).



Hey! You found this booklet interesting? Support Converting Colors with the new Membership Option!

The pro membership hides all ads, plus gives you double the colors in the color bucket, and more awesome pro features!

**[Learn more, Memberships starting at \\$2.50/m!](#)**

**Follow me  
on Twitter!**

@ConvertingColor