

Converting Colors

Hex(CBACAC)

Have a look what the booklet for
Hex(CBACAC) contains.

Hex(CBACAC)	3
<i>Conversions</i>	4
<i>Details</i>	6
<i>Harmonies</i>	11
<i>Previews</i>	23
<i>Color Blindness Simulation</i>	26
<i>CSS Examples</i>	29

Color

Hex(CBACAC)

Conversions

Conversions Part 1

Format	Color
Hex	CBACAC
RGB	203, 172, 172
RGB Percent	80%, 67%, 67%
CMY	0.2039, 0.3255, 0.3255
CMYK	0.00, 0.15, 0.15, 0.20
HSL	0°, 23%, 74%
HSV	0°, 15%, 80%
XYZ	46.8275, 45.1801, 45.2823
YIQ	181.2690, 18.4760, 6.5720

Conversions

Conversions Part 2

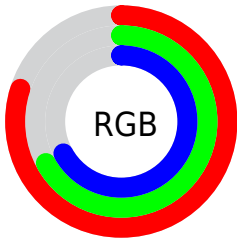
Format	Color
RYB	203, 172, 172
Decimal	13348012
CIELab	73.01, 11.24, 4.18
CIElCh	73, 11.990, 20.402
Yxy	45.1801, 0.3411, 0.3291
Android (android.graphics.Color)	4291538092 (0xFFCBACAC)
YUV	181.2690, -4.5696, 19.0581
Hunter-Lab	67.2162, 6.7274, 7.1087

Details

The Hex color **CBACAC** is a light color, and the websafe version is hex **CC9999**. A complement of this color would be **ACCBCB**, and the grayscale version is **B5B5B5**.

A 20% lighter version of the original color is **FFE3E3**, and **957878** is the 20% darker color. If you saturate the color by 10%, you get **CB9898**, and if you desaturate by 10%, it is **CBC0C0**.

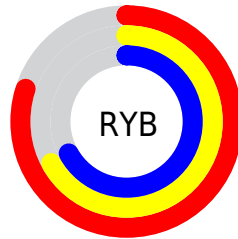
Distribution



Red (80%)

Green (67%)

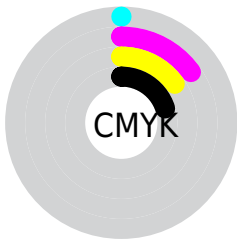
Blue (67%)



Red (80%)

Yellow (67%)

Blue (67%)

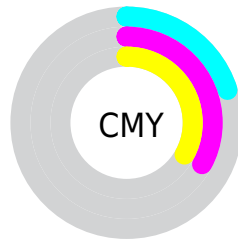


Cyan (0%)

Magenta (15%)

Yellow (15%)

Black (20%)



Cyan (20%)

Magenta (33%)

Yellow (33%)

Brightness & Saturation Gradients

These gradients show how the Hex color CBACAC changes by changing the brightness by 10 percent. The first figure shows a shift by +10% for each color and the second figure -10%.

Similar to the brightness gradients but the following saturation gradients show a change of the Hex color CBACAC by changing the saturation by 10% instead.

 CBACAC

 CBACAC

FFFFFF

 AF9191

 FFE3E3

 957878

 7A5F5F

 614747

 493131

 321B1C

 1F0201

 000000

 CBACAC

 CBACAC

 CB9898

 CBC0C0

 CB8383

 CBD5D5

 CB6F6F

 CBE9E9

 CB5B5B

 CBFDFD

 CB4747

 CBF0F0

 CB3232

 CB1E1E

 CB0A0A

 CB0000

Harmonies

Analogous

The Analogous color harmony consists of three colors that are next to each other on the color wheel.



C8ACB7



CBACAC



C8AEA3

Triad

The Triadic color harmony groups three colors that are evenly spaced from another and form a triangle on the color wheel.



CBACAC



A7B8A5



A4B5C9

Complementary

The Complementary color scheme is a pair of colors which are on the opposite of each other on the color wheel.



CBACAC



ACCBCB

Split Complementary

Split-complementary colors differ from the complementary color scheme. The scheme consists of three colors, the original color and two neighbors of the complement color.



9AB8C4



CBACAC



9DBAAF

Square

The Square scheme is like the rectangle color scheme, but the four colors are evenly spaced on the color wheel.



CBACAC



B4B59F



98BABA



B1B2C8

Rectangle

The Rectangle color scheme consists of four colors that form a rectangle on the color wheel.



CBACAC



C3B09F



98BABA



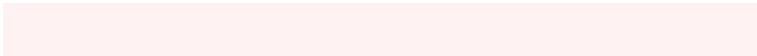
A0B6C8

Sweetspot

The Sweet Spot groups the original color and five complimentary colors.



CBACAC



FFF2F2



CBACCB



807878



000000



808080

Same Dimension

The Same Dimension uses a secret algorithm to generate beautiful new colors.



CBACAC



FFD1D1



CBBCAC



665C5C



A60000



260000

Inverse Universe

The Inverse Universe completely reimagines the original color for something new.



ACCBCB



D1FFFF



ACBCCB



5C6666



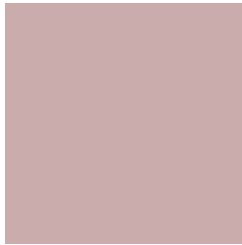
00A6A6



002626

Previews

White Background



This preview shows how the Hex color CBACAC looks on a white background.

Color Contrast Check

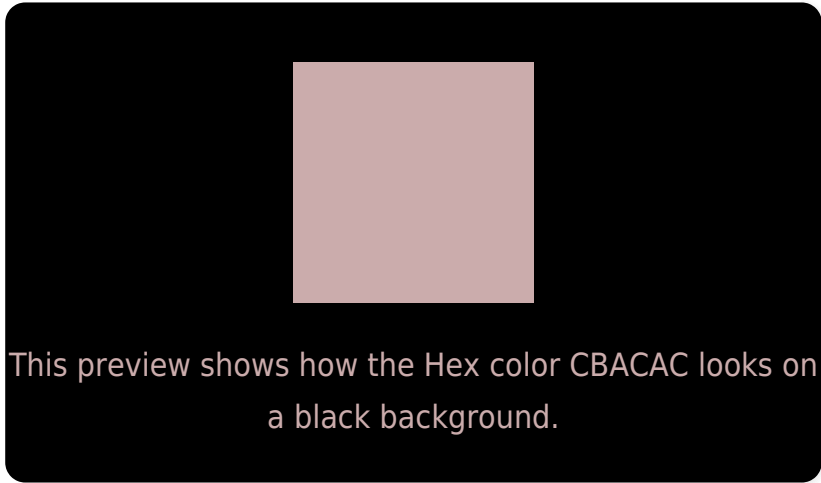
Large Text (above 18pt) WCAG AA × Fail

Any Text WCAG AA × Fail

Large Text (above 18pt) WCAG AAA × Fail

Any Text WCAG AAA × Fail

Black Background



Color Contrast Check

Large Text (above 18pt) WCAG AA ✓ Pass

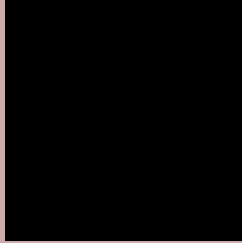
Any Text WCAG AA ✓ Pass

Large Text (above 18pt) WCAG AAA ✓ Pass

Any Text WCAG AAA ✓ Pass

If you want to check with other color combinations, try the [Color Contrast Checker](#).

Hex CBACAC Background



This preview shows how black text looks on a background with the Hex color CBACAC.



This preview shows how white text looks on a background with the Hex color CBACAC.

Color Blindness Simulation

Color vision deficiency is a very complex topic, and I could not describe the different causes any better than Wikipedia does, so if you want to learn more, you should check out their [article about color blindness](#).

Dichromacy



Original Color
CBACAC

Protanopia
B7B3B0

Deuteranopia
C8ADAC

Trichromacy



Original Color
CBACAC

Protanomaly
BEB0AF

Deuteranomaly
C9ADAC

Tritanomaly
CCABB3

Monochromacy



Original Color
CBACAC

Achromatopsia
B5B5B5

Achromatomaly
BDB2B2

CSS Examples

Text

The CSS property to change the color of the text to Hex CBACAC is called "color". The color property can be set on classes, ids or directly on the HTML element.

This example shows how text in the color #CBACAC looks like.

```
.text, #text, p{  
    color:#CBACAC  
}
```

If you want to add a text shadow in that color use the text-shadow property, you can generate a text shadow directly with our [CSS Text Shadow Generator](#).

Here you see how black text with a 4 pixel #CBACAC colored shadow looks like.

```
.shadow{ text-shadow: 4px 4px 2px #CBACAC
}
```

Border

The CSS property to change the border of an element to Hex CBACAC is called "border". The border property can be set on classes, ids or directly on the HTML element.

This example shows the color as border, it can be applied via the CSS property "border" or "border-color".

```
.border, #border, table{ border:4px solid
#CBACAC }
```

If only the border color should be changed use the property `border-color`.

```
.border{ border-color:#CBACAC }
```

If you want to add a box shadow in that color use:

Here you see how a box with a 4 pixel #CBACAC colored shadow looks like.

```
.boxshadow{ -moz-box-shadow:4px 4px 4px  
4px #CBACAC; -webkit-box-shadow:4px 4px  
4px 4px #CBACAC; box-shadow:4px 4px 4px  
4px #CBACAC }
```

Background

The CSS property to change the background color of an element to Hex CBACAC is called "background". The background property can be set on classes, ids or directly on the HTML element.

```
.background, #background, body{  
background:#CBACAC }
```

If only the background color should be changed can be used:

```
.background{ background-color:#CBACAC }
```

This example shows the color as background, it is applied via the CSS property "background".

To optimize and compress your CSS code, you can use our [online CSS compressor and optimizer](#) based on csstidy. If you want to create a linear or radial gradient as background or border, check our [CSS Gradient Generator](#).

Hey! You found this booklet interesting? Support Converting Colors with the new Membership Option!

The pro membership hides all ads, plus gives you double the colors in the color bucket, and more awesome pro features!

[Learn more, Memberships starting at \\$2.50/m!](#)

**Follow me
on Twitter!**

@ConvertingColor