

Converting Colors

Hex(CBB3B3)

Have a look what the booklet for
Hex(CBB3B3) contains.

Hex(CBB3B3)	3
<i>Conversions</i>	4
<i>Details</i>	6
<i>Harmonies</i>	11
<i>Previews</i>	23
<i>Color Blindness Simulation</i>	26
<i>CSS Examples</i>	29

Color

Hex(CBB3B3)

Conversions

Conversions Part 1

Format	Color
Hex	CBB3B3
RGB	203, 179, 179
RGB Percent	80%, 70%, 70%
CMY	0.2039, 0.2980, 0.2980
CMYK	0.00, 0.12, 0.12, 0.20
HSL	0°, 19%, 75%
HSV	0°, 12%, 80%
XYZ	48.8854, 48.1914, 49.3732
YIQ	186.1760, 14.3040, 5.0880

Conversions

Conversions Part 2

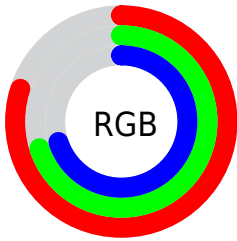
Format	Color
R _Y B	203, 179, 179
Decimal	13349811
CIE Lab	74.95, 8.60, 3.15
CIE LCh	75, 9.158, 20.118
Yxy	48.1914, 0.3338, 0.3291
Android (android.graphics.Color)	4291539891 (0xFFCBB3B3)
YUV	186.1760, -3.5378, 14.7546
Hunter-Lab	69.4200, 4.2142, 6.4256

Details

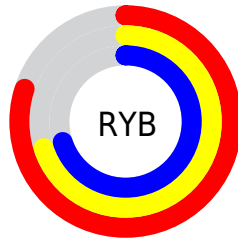
The Hex color **CBB3B3** is a light color, and the websafe version is hex **CCCCCC**. A complement of this color would be **B3CBCB**, and the grayscale version is **BABABA**.

A 20% lighter version of the original color is **FFE7E7**, and **957E7E** is the 20% darker color. If you saturate the color by 10%, you get **CB9F9F**, and if you desaturate by 10%, it is **CBC7C7**.

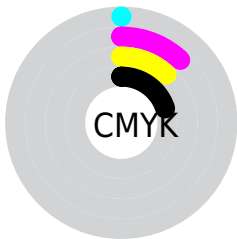
Distribution



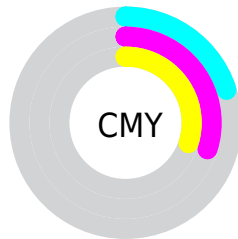
- Red (80%)
- Green (70%)
- Blue (70%)



- Red (80%)
- Yellow (70%)
- Blue (70%)



- Cyan (0%)
- Magenta (12%)
- Yellow (12%)
- Black (20%)



- Cyan (20%)
- Magenta (30%)
- Yellow (30%)

Brightness & Saturation Gradients

These gradients show how the Hex color CBB3B3 changes by changing the brightness by 10 percent. The first figure shows a shift by +10% for each color and the second figure -10%.

Similar to the brightness gradients but the following saturation gradients show a change of the Hex color CBB3B3 by changing the saturation by 10% instead.

 CBB3B3

 CBB3B3

FFFFFF

 AF9898

 FFEBE8

 957E7E

 7B6565

 624D4D

 4A3637

 332121

 1F0B0B

 000000

 CBB3B3

 CBB3B3

 CB9F9F

 CBC7C7

 CB8A8A

 CBD CDC

 CB7676

 CBF0F0

 CB6262

 CBFFFF

 CB4E4E

 CB3939

 CB2525

 CB1111

 CB0000

Harmonies

Analogous

The Analogous color harmony consists of three colors that are next to each other on the color wheel.



C8B3BC



CBB3B3



C9B4AC

Triad

The Triadic color harmony groups three colors that are evenly spaced from another and form a triangle on the color wheel.



CBB3B3



B0BCAD



ADBAC9

Complementary

The Complementary color scheme is a pair of colors which are on the opposite of each other on the color wheel.



CBB3B3



B3CBCB

Split Complementary

Split-complementary colors differ from the complementary color scheme. The scheme consists of three colors, the original color and two neighbors of the complement color.



A6BCC5



CBB3B3



A8BDB5

Square

The Square scheme is like the rectangle color scheme, but the four colors are evenly spaced on the color wheel.



CBB3B3



B9BAA9



A4DBBE



B7B7C8

Rectangle

The Rectangle color scheme consists of four colors that form a rectangle on the color wheel.



CBB3B3



C5B6A9



A4BDBE



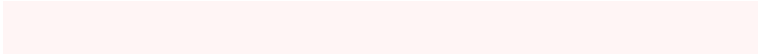
AABBC8

Sweetspot

The Sweet Spot groups the original color and five complimentary colors.



CBB3B3



FFF5F5



CBB3CB



807979



000000



808080

Same Dimension

The Same Dimension uses a secret algorithm to generate beautiful new colors.



CBB3B3



FFDBDB



CBBFB3



665C5C



A60000



260000

Inverse Universe

The Inverse Universe completely reimagines the original color for something new.



B3CBCB



DBFFFF



B3BFCB



5C6666



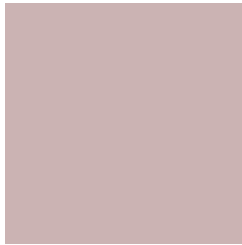
00A6A6



002626

Previews

White Background



This preview shows how the Hex color CBB3B3 looks on a white background.

Color Contrast Check

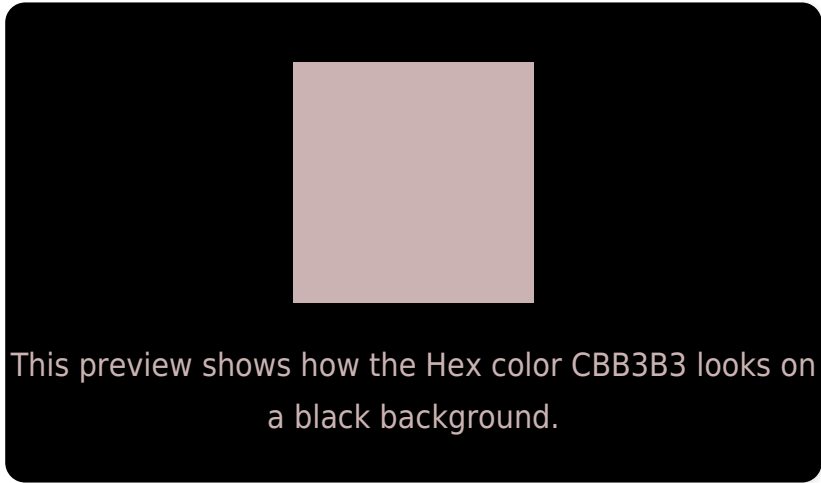
Large Text (above 18pt) WCAG AA × Fail

Any Text WCAG AA × Fail

Large Text (above 18pt) WCAG AAA × Fail

Any Text WCAG AAA × Fail

Black Background



Color Contrast Check

Large Text (above 18pt) WCAG AA ✓ Pass

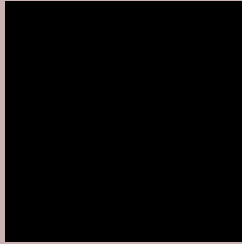
Any Text WCAG AA ✓ Pass

Large Text (above 18pt) WCAG AAA ✓ Pass

Any Text WCAG AAA ✓ Pass

If you want to check with other color combinations, try the [Color Contrast Checker](#).

Hex CBB3B3 Background



This preview shows how black text looks on a background with the Hex color CBB3B3.



This preview shows how white text looks on a background with the Hex color CBB3B3.

Color Blindness Simulation

Color vision deficiency is a very complex topic, and I could not describe the different causes any better than Wikipedia does, so if you want to learn more, you should check out their [article about color blindness](#).

Dichromacy



Trichromacy



Original Color
CBB3B3

Protanomaly
C1B6B5

Deuteranomaly
CCB2B3

Tritanomaly
CCB2BB

Monochromacy



Original Color
CBB3B3

Achromatopsia
BABABA

Achromatomaly
C0B7B7

CSS Examples

Text

The CSS property to change the color of the text to Hex CBB3B3 is called "color". The color property can be set on classes, ids or directly on the HTML element.

This example shows how text in the color #CBB3B3 looks like.

```
.text, #text, p{  
    color:#CBB3B3  
}
```

If you want to add a text shadow in that color use the text-shadow property, you can generate a text shadow directly with our [CSS Text Shadow Generator](#).

Here you see how black text with a 4 pixel #CBB3B3 colored shadow looks like.

```
.shadow{ text-shadow: 4px 4px 2px #CBB3B3
}
```

Border

The CSS property to change the border of an element to Hex CBB3B3 is called "border". The border property can be set on classes, ids or directly on the HTML element.

This example shows the color as border, it can be applied via the CSS property "border" or "border-color".

```
.border, #border, table{ border:4px solid
#CBB3B3 }
```

If only the border color should be changed use the property `border-color`.

```
.border{ border-color:#CBB3B3 }
```

If you want to add a box shadow in that color use:

Here you see how a box with a 4 pixel #CBB3B3 colored shadow looks like.

```
.boxshadow{ -moz-box-shadow:4px 4px 4px  
4px #CBB3B3; -webkit-box-shadow:4px 4px  
4px 4px #CBB3B3; box-shadow:4px 4px 4px  
4px #CBB3B3 }
```

Background

The CSS property to change the background color of an element to Hex CBB3B3 is called "background". The background property can be set on classes, ids or directly on the HTML element.

```
.background, #background, body{  
background:#CBB3B3 }
```

If only the background color should be changed can be used:

```
.background{ background-color:#CBB3B3 }
```

This example shows the color as background, it is applied via the CSS property "background".

To optimize and compress your CSS code, you can use our [online CSS compressor and optimizer](#) based on csstidy. If you want to create a linear or radial gradient as background or border, check our [CSS Gradient Generator](#).

Hey! You found this booklet interesting? Support Converting Colors with the new Membership Option!

The pro membership hides all ads, plus gives you double the colors in the color bucket, and more awesome pro features!

[Learn more, Memberships starting at \\$2.50/m!](#)

**Follow me
on Twitter!**

@ConvertingColor