

Converting Colors

Hex(CBB4AA)

Have a look what the booklet for
Hex(CBB4AA) contains.

Hex(CBB4AA)	3
<i>Conversions</i>	4
<i>Details</i>	6
<i>Harmonies</i>	11
<i>Previews</i>	23
<i>Color Blindness Simulation</i>	26
<i>CSS Examples</i>	29

Color

Hex(CBB4AA)

Conversions

Conversions Part 1

Format	Color
Hex	CBB4AA
RGB	203, 180, 170
RGB Percent	80%, 71%, 67%
CMY	0.2039, 0.2941, 0.3333
CMYK	0.00, 0.11, 0.16, 0.20
HSL	18°, 24%, 73%
HSV	18°, 16%, 80%
XYZ	48.2056, 48.2413, 44.8010
YIQ	185.7370, 16.9180, 1.7660

Conversions

Conversions Part 2

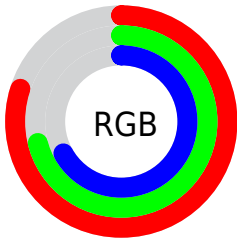
Format	Color
RYB	203, 184, 170
Decimal	13350058
CIELab	74.98, 6.60, 8.10
CIELCh	75, 10.448, 50.839
Yxy	48.2413, 0.3413, 0.3415
Android (android.graphics.Color)	4291540138 (0xFFCBB4AA)
YUV	185.7370, -7.7583, 15.1397
Hunter-Lab	69.4560, 2.3391, 10.3755

Details

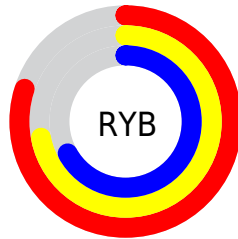
The Hex color **CBB4AA** is a light color, and the websafe version is hex **CCCCCC**. A complement of this color would be **AAC1CB**, and the grayscale version is **BABABA**.

A 20% lighter version of the original color is **FFECE1**, and **957F76** is the 20% darker color. If you saturate the color by 10%, you get **CBA696**, and if you desaturate by 10%, it is **CBC2BE**.

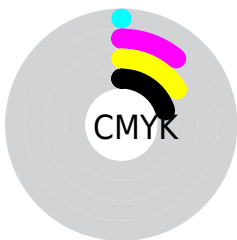
Distribution



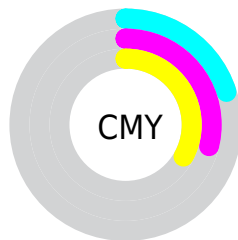
- Red (80%)
- Green (71%)
- Blue (67%)



- Red (80%)
- Yellow (72%)
- Blue (67%)



- Cyan (0%)
- Magenta (11%)
- Yellow (16%)
- Black (20%)



- Cyan (20%)
- Magenta (29%)
- Yellow (33%)

Brightness & Saturation Gradients

These gradients show how the Hex color CBB4AA changes by changing the brightness by 10 percent. The first figure shows a shift by +10% for each color and the second figure -10%.

Similar to the brightness gradients but the following saturation gradients show a change of the Hex color CBB4AA by changing the saturation by 10% instead.



CBB4AA



CBB4AA

FFFFFF



AF9990



FFECE1



957F76

FFFFFFE



7B665D



614E46



49372F



32221B



1F0C00



000000



CBB4AA



CBB4AA

 CBA696

 CBC2BE

 CB9881

 CBD0D3

 CB8A6D

 CBDEE7

 CB7B59

 CBEDFB

 CB6D45

 CBFBF7

 CB5F30

 CBFFFF

 CB511C

 CB4308

 CB3E00

Harmonies

Analogous

The Analogous color harmony consists of three colors that are next to each other on the color wheel.



CEB2B2



CBB4AA



C4B7A6

Triad

The Triadic color harmony groups three colors that are evenly spaced from another and form a triangle on the color wheel.



CBB4AA



A5BEB5



B7B7CA

Complementary

The Complementary color scheme is a pair of colors which are on the opposite of each other on the color wheel.



CBB4AA



AAC1CB

Split Complementary

Split-complementary colors differ from the complementary color scheme. The scheme consists of three colors, the original color and two neighbors of the complement color.



ABBACB



CBB4AA



A1BEBF

Square

The Square scheme is like the rectangle color scheme, but the four colors are evenly spaced on the color wheel.



CBB4AA



AEBDAC



A3BDC7



C2B4C5

Rectangle

The Rectangle color scheme consists of four colors that form a rectangle on the color wheel.



CBB4AA



BDB9A6



A3BDC7



B3B8CB

Sweetspot

The Sweet Spot groups the original color and five complimentary colors.



CBB4AA



FFF6F2



CBAAC1



807A78



000000



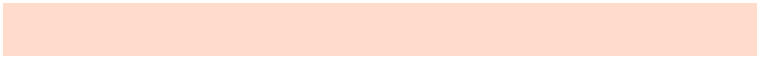
808080

Same Dimension

The Same Dimension uses a secret algorithm to generate beautiful new colors.



CBB4AA



FFDBCC



CBC4AA



665F5C



A63200



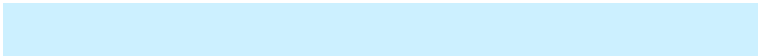
260C00

Inverse Universe

The Inverse Universe completely reimagines the original color for something new.



AAC1CB



CCF0FF



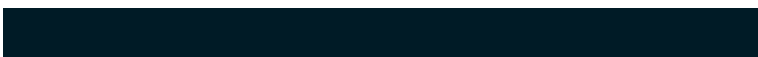
AAB1CB



5C6366



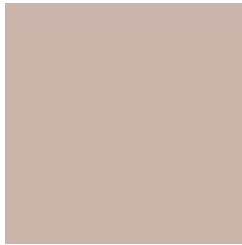
0074A6



001B26

Previews

White Background



This preview shows how the Hex color CBB4AA looks on a white background.

Color Contrast Check

Large Text (above 18pt) WCAG AA × Fail

Any Text WCAG AA × Fail

Large Text (above 18pt) WCAG AAA × Fail

Any Text WCAG AAA × Fail

Black Background



This preview shows how the Hex color CBB4AA looks on a black background.

Color Contrast Check

Large Text (above 18pt) WCAG AA ✓ Pass

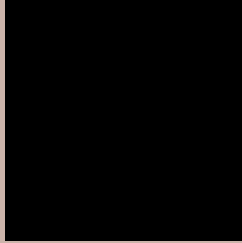
Any Text WCAG AA ✓ Pass

Large Text (above 18pt) WCAG AAA ✓ Pass

Any Text WCAG AAA ✓ Pass

If you want to check with other color combinations, try the [Color Contrast Checker](#).

Hex CBB4AA Background



This preview shows how black text looks on a background with the Hex color CBB4AA.



This preview shows how white text looks on a background with the Hex color CBB4AA.

Color Blindness Simulation

Color vision deficiency is a very complex topic, and I could not describe the different causes any better than Wikipedia does, so if you want to learn more, you should check out their [article about color blindness](#).

Dichromacy



Trichromacy



Original Color
CBB4AA

Protanomaly
C3B7AB

Deuteranomaly
CEB3AA

Tritanomaly
CDB2B7

Monochromacy



Original Color
CBB4AA

Achromatopsia
BABABA

Achromatomaly
C0B8B4

CSS Examples

Text

The CSS property to change the color of the text to Hex CBB4AA is called "color". The color property can be set on classes, ids or directly on the HTML element.

This example shows how text in the color #CBB4AA looks like.

```
.text, #text, p{  
    color:#CBB4AA  
}
```

If you want to add a text shadow in that color use the text-shadow property, you can generate a text shadow directly with our [CSS Text Shadow Generator](#).

Here you see how black text with a 4 pixel #CBB4AA colored shadow looks like.

```
.shadow{ text-shadow: 4px 4px 2px #CBB4AA
}
```

Border

The CSS property to change the border of an element to Hex CBB4AA is called "border". The border property can be set on classes, ids or directly on the HTML element.

This example shows the color as border, it can be applied via the CSS property "border" or "border-color".

```
.border, #border, table{ border:4px solid
#CBB4AA }
```

If only the border color should be changed use the property `border-color`.

```
.border{ border-color:#CBB4AA }
```

If you want to add a box shadow in that color use:

Here you see how a box with a 4 pixel #CBB4AA colored shadow looks like.

```
.boxshadow{ -moz-box-shadow:4px 4px 4px  
4px #CBB4AA; -webkit-box-shadow:4px 4px  
4px 4px #CBB4AA; box-shadow:4px 4px 4px  
4px #CBB4AA }
```

Background

The CSS property to change the background color of an element to Hex CBB4AA is called "background". The background property can be set on classes, ids or directly on the HTML element.

```
.background, #background, body{  
background:#CBB4AA }
```

If only the background color should be changed can be used:

```
.background{ background-color:#CBB4AA }
```

This example shows the color as background, it is applied via the CSS property "background".

To optimize and compress your CSS code, you can use our [online CSS compressor and optimizer](#) based on csstidy. If you want to create a linear or radial gradient as background or border, check our [CSS Gradient Generator](#).

Hey! You found this booklet interesting? Support Converting Colors with the new Membership Option!

The pro membership hides all ads, plus gives you double the colors in the color bucket, and more awesome pro features!

[Learn more, Memberships starting at \\$2.50/m!](#)

**Follow me
on Twitter!**

@ConvertingColor