

Converting Colors

Hex(CBB9B2)

Have a look what the booklet for
Hex(CBB9B2) contains.

Hex(CBB9B2)	3
<i>Conversions</i>	4
<i>Details</i>	6
<i>Harmonies</i>	11
<i>Previews</i>	23
<i>Color Blindness Simulation</i>	26
<i>CSS Examples</i>	29

Color

Hex(CBB9B2)

Conversions

Conversions Part 1

Format	Color
Hex	CBB9B2
RGB	203, 185, 178
RGB Percent	80%, 73%, 70%
CMY	0.2039, 0.2745, 0.3020
CMYK	0.00, 0.09, 0.12, 0.20
HSL	17°, 19%, 75%
HSV	17°, 12%, 80%
XYZ	50.0134, 50.6088, 49.2520
YIQ	189.5840, 12.9750, 1.6390

Conversions

Conversions Part 2

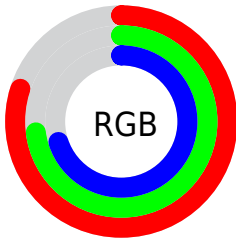
Format	Color
R _Y B	203, 188, 178
Decimal	13351346
CIE Lab	76.44, 5.21, 5.85
CIE LCh	76, 7.837, 48.341
Yxy	50.6088, 0.3337, 0.3377
Android (android.graphics.Color)	4291541426 (0xFFCBB9B2)
YUV	189.5840, -5.7109, 11.7658
Hunter-Lab	71.1399, 0.9961, 8.7499

Details

The Hex color **CBB9B2** is a light color, and the websafe version is hex **CCCCCC**. A complement of this color would be **B2C4CB**, and the grayscale version is **BEBEBE**.

A 20% lighter version of the original color is **FFF1EA**, and **95847D** is the 20% darker color. If you saturate the color by 10%, you get **CBAA9E**, and if you desaturate by 10%, it is **CBC8C6**.

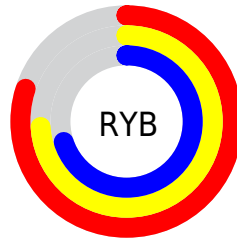
Distribution



Red (80%)

Green (73%)

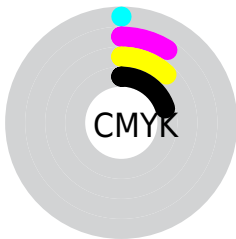
Blue (70%)



Red (80%)

Yellow (74%)

Blue (70%)

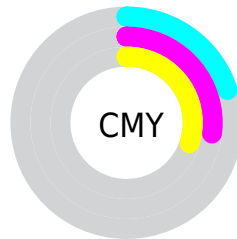


Cyan (0%)

Magenta (9%)

Yellow (12%)

Black (20%)



Cyan (20%)

Magenta (27%)

Yellow (30%)

Brightness & Saturation Gradients

These gradients show how the Hex color CBB9B2 changes by changing the brightness by 10 percent. The first figure shows a shift by +10% for each color and the second figure -10%.

Similar to the brightness gradients but the following saturation gradients show a change of the Hex color CBB9B2 by changing the saturation by 10% instead.

 CBB9B2

 CBB9B2

FFFFFF

 B09E97

 FFF1EA

 95847D

 7B6B64

 62534D

 4A3C36

 332621

 1E1109

 000000

 CBB9B2

 CBB9B2

 CBAA9E

 CBC8C6

 CB9C89

 CBD6DB

 CB8D75

 CBE5EF

 CB7F61

 CBF3FF

 CB704D

 CBF000

 CB6138

 CB5324

 CB4410

 CB3900

Harmonies

Analogous

The Analogous color harmony consists of three colors that are next to each other on the color wheel.



CDB8B8



CBB9B2



C6BBAF

Triad

The Triadic color harmony groups three colors that are evenly spaced from another and form a triangle on the color wheel.



CBB9B2



AEC1B9



BBBCCA

Complementary

The Complementary color scheme is a pair of colors which are on the opposite of each other on the color wheel.



CBB9B2



B2C4CB

Split Complementary

Split-complementary colors differ from the complementary color scheme. The scheme consists of three colors, the original color and two neighbors of the complement color.



B2BECB



CBB9B2



ABC1C1

Square

The Square scheme is like the rectangle color scheme, but the four colors are evenly spaced on the color wheel.



CBB9B2



B5C0B3



ACC0C7



C3B9C6

Rectangle

The Rectangle color scheme consists of four colors that form a rectangle on the color wheel.



CBB9B2



C1BDAE



ACC0C7



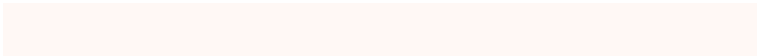
B8BCCB

Sweetspot

The Sweet Spot groups the original color and five complimentary colors.



CBB9B2



FFF8F5



CBB2C4



807B79



000000



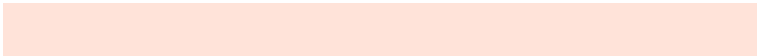
808080

Same Dimension

The Same Dimension uses a secret algorithm to generate beautiful new colors.



CBB9B2



FFE3D9



CBC5B2



665F5C



A62E00



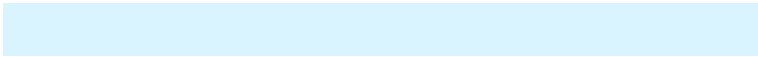
260B00

Inverse Universe

The Inverse Universe completely reimagines the original color for something new.



B2C4CB



D9F4FF



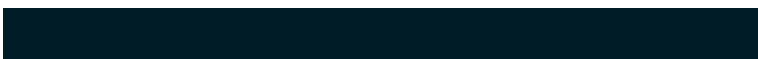
B2B8CB



5C6366



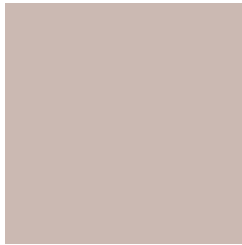
0077A6



001C26

Previews

White Background



This preview shows how the Hex color CBB9B2 looks on a white background.

Color Contrast Check

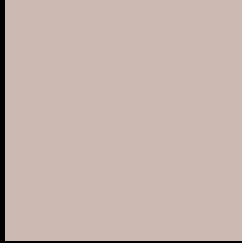
Large Text (above 18pt) WCAG AA × Fail

Any Text WCAG AA × Fail

Large Text (above 18pt) WCAG AAA × Fail

Any Text WCAG AAA × Fail

Black Background



This preview shows how the Hex color CBB9B2 looks on a black background.

Color Contrast Check

Large Text (above 18pt) WCAG AA ✓ Pass

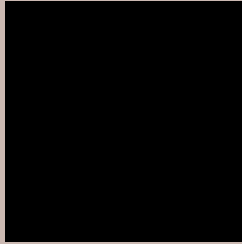
Any Text WCAG AA ✓ Pass

Large Text (above 18pt) WCAG AAA ✓ Pass

Any Text WCAG AAA ✓ Pass

If you want to check with other color combinations, try the [Color Contrast Checker](#).

Hex CBB9B2 Background



This preview shows how black text looks on a background with the Hex color CBB9B2.



This preview shows how white text looks on a background with the Hex color CBB9B2.

Color Blindness Simulation

Color vision deficiency is a very complex topic, and I could not describe the different causes any better than Wikipedia does, so if you want to learn more, you should check out their [article about color blindness](#).

Dichromacy





Tritanopia
CDB6C4

Trichromacy



Original Color
CBB9B2

Protanomaly
C5BBB3

Deuteranomaly
D0B7B3

Tritanomaly
CCB7BD

Monochromacy



Original Color
CBB9B2

Achromatopsia
BEBEBE

Achromatomaly
C3BCBA

CSS Examples

Text

The CSS property to change the color of the text to Hex CBB9B2 is called "color". The color property can be set on classes, ids or directly on the HTML element.

This example shows how text in the color #CBB9B2 looks like.

```
.text, #text, p{  
    color:#CBB9B2  
}
```

If you want to add a text shadow in that color use the text-shadow property, you can generate a text shadow directly with our [CSS Text Shadow Generator](#).

Here you see how black text with a 4 pixel #CBB9B2 colored shadow looks like.

```
.shadow{ text-shadow: 4px 4px 2px #CBB9B2
}
```

Border

The CSS property to change the border of an element to Hex CBB9B2 is called "border". The border property can be set on classes, ids or directly on the HTML element.

This example shows the color as border, it can be applied via the CSS property "border" or "border-color".

```
.border, #border, table{ border:4px solid
#CBB9B2 }
```

If only the border color should be changed use the property `border-color`.

```
.border{ border-color:#CBB9B2 }
```

If you want to add a box shadow in that color use:

Here you see how a box with a 4 pixel #CBB9B2 colored shadow looks like.

```
.boxshadow{ -moz-box-shadow:4px 4px 4px  
4px #CBB9B2; -webkit-box-shadow:4px 4px  
4px 4px #CBB9B2; box-shadow:4px 4px 4px  
4px #CBB9B2 }
```

Background

The CSS property to change the background color of an element to Hex CBB9B2 is called "background". The background property can be set on classes, ids or directly on the HTML element.

```
.background, #background, body{  
background:#CBB9B2 }
```

If only the background color should be changed can be used:

```
.background{ background-color:#CBB9B2 }
```

This example shows the color as background, it is applied via the CSS property "background".

To optimize and compress your CSS code, you can use our [online CSS compressor and optimizer](#) based on csstidy. If you want to create a linear or radial gradient as background or border, check our [CSS Gradient Generator](#).

Hey! You found this booklet interesting? Support Converting Colors with the new Membership Option!

The pro membership hides all ads, plus gives you double the colors in the color bucket, and more awesome pro features!

[Learn more, Memberships starting at \\$2.50/m!](#)

**Follow me
on Twitter!**

@ConvertingColor