

# Converting Colors

Hex(CC3D77)

Have a look what the booklet for  
Hex(CC3D77) contains.

<b>Hex(CC3D77)</b> .....	3
<b><i>Conversions</i></b> .....	4
<b><i>Details</i></b> .....	6
<b><i>Harmonies</i></b> .....	11
<b><i>Previews</i></b> .....	23
<b><i>Color Blindness Simulation</i></b> .....	26
<b><i>CSS Examples</i></b> .....	29

# Color

Hex(CC3D77)

# Conversions

## Conversions Part 1

<b>Format</b>	<b>Color</b>
Hex	CC3D77
RGB	204, 61, 119
RGB Percent	80%, 24%, 47%
CMY	0.2000, 0.7608, 0.5333
CMYK	0.00, 0.70, 0.42, 0.20
HSL	336°, 58%, 52%
HSV	336°, 70%, 80%
XYZ	29.9004, 17.5068, 19.2560
YIQ	110.3690, 66.6100, 48.3540

# Conversions

## Conversions Part 2

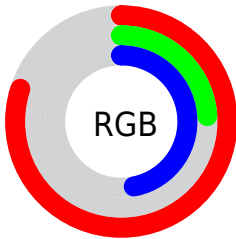
<b>Format</b>	<b>Color</b>
<b>R<sub>YB</sub></b>	204, 61, 119
Decimal	13385079
CIE <sub>Lab</sub>	48.89, 60.35, -0.38
CIE <sub>LCh</sub>	49, 60.348, 359.641
Yxy	17.5068, 0.4485, 0.2626
Android (android.graphics.Color)	4291575159 (0xFFCC3D77)
YUV	110.3690, 4.2551, 82.1144
Hunter-Lab	41.8411, 54.3373, 2.0025

# Details

The Hex color **CC3D77** is a dark color, and the websafe version is hex **CC3366**. The color can be described as dark muted rose. A complement of this color would be **3DCC92**, and the grayscale version is **6E6E6E**.

A 20% lighter version of the original color is **FF76AB**, and **910047** is the 20% darker color. If you saturate the color by 10%, you get **CC296B**, and if you desaturate by 10%, it is **CC5183**.

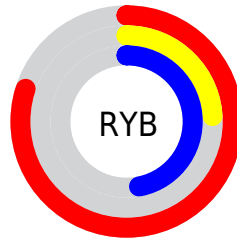
# Distribution



Red (80%)

Green (24%)

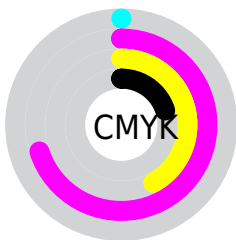
Blue (47%)



Red (80%)

Yellow (24%)

Blue (47%)

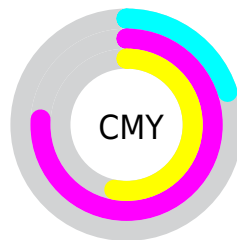


Cyan (0%)

Magenta (70%)

Yellow (42%)

Black (20%)



Cyan (20%)

Magenta (76%)

Yellow (53%)

# Brightness & Saturation Gradients

These gradients show how the Hex color CC3D77 changes by changing the brightness by 10 percent. The first figure shows a shift by +10% for each color and the second figure -10%.

Similar to the brightness gradients but the following saturation gradients show a change of the Hex color CC3D77 by changing the saturation by 10% instead.



 CC3D77

 CC3D77

FFFFFF

 AE1B5E

 FF76AB

 910047

 FF93C6

 740031

 FFAFE2

 57001C

 FFCCFF

 3E0003

 FFE9FF

 190001

 000000

 CC3D77

 CC3D77

 CC296B

 CC5183

 CC145F

 CC668F

 CC0053

 CC7A9B

 CC8FA8

 CCA3B4

 CCB7C0

 CCCCCC

 CCE0D8

 CCF5E4

# Harmonies

## Analogous

The Analogous color harmony consists of three colors that are next to each other on the color wheel.



B04EA9



CC3D77



CB4645

# Triad

The Triadic color harmony groups three colors that are evenly spaced from another and form a triangle on the color wheel.



CC3D77



598004



0086CC

# Complementary

The Complementary color scheme is a pair of colors which are on the opposite of each other on the color wheel.



CC3D77



3DCC92

# Split Complementary

Split-complementary colors differ from the complementary color scheme. The scheme consists of three colors, the original color and two neighbors of the complement color.



008BA6



CC3D77



00883D

# Square

The Square scheme is like the rectangle color scheme, but the four colors are evenly spaced on the color wheel.



CC3D77



8C7200



008B72



007BDB

# Rectangle

The Rectangle color scheme consists of four colors that form a rectangle on the color wheel.



CC3D77



BD5526



008B72



0088C1



# Sweetspot

The Sweet Spot groups the original color and five complimentary colors.



CC3D77



FFC9DF



903DCC



80606D



000000



808080



# Same Dimension

The Same Dimension uses a secret algorithm to generate beautiful new colors.



CC3D77



FF2980



CC493D



665C60



A60043



260010



# Inverse Universe

The Inverse Universe completely reimagines the original color for something new.



CC3D77



FF2980



3DC0CC



665C60



A60043



260010



# Previews

## White Background



This preview shows how the Hex color CC3D77 looks on a white background.

## Color Contrast Check

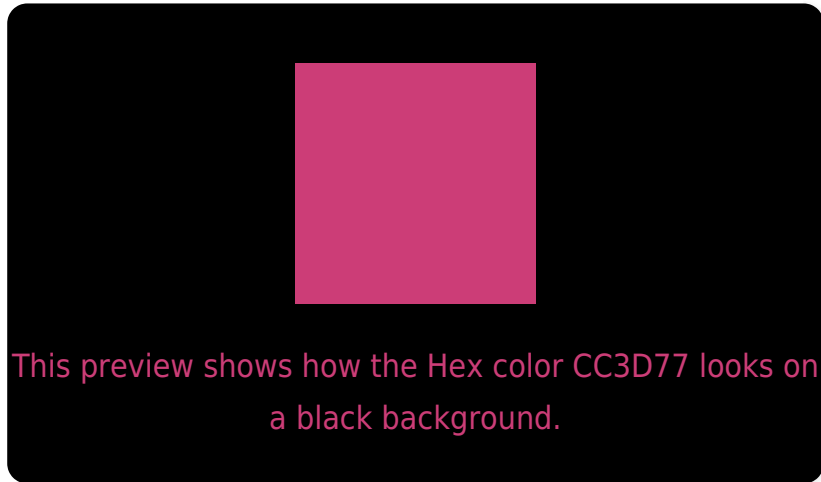
Large Text (above 18pt) WCAG AA ✓ Pass

Any Text WCAG AA ✓ Pass

Large Text (above 18pt) WCAG AAA ✓ Pass

Any Text WCAG AAA × Fail

# Black Background



## Color Contrast Check

Large Text (above 18pt) WCAG AA ✓ Pass

Any Text WCAG AA ✓ Pass

Large Text (above 18pt) WCAG AAA ✓ Pass

Any Text WCAG AAA × Fail

If you want to check with other color combinations, try the [Color Contrast Checker](#).



## Hex CC3D77 Background



This preview shows how black text looks on a background with the Hex color CC3D77.

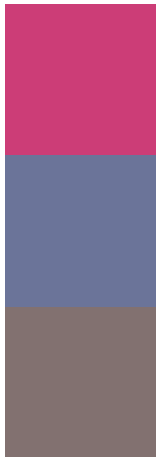


This preview shows how white text looks on a background with the Hex color CC3D77.

# Color Blindness Simulation

Color vision deficiency is a very complex topic, and I could not describe the different causes any better than Wikipedia does, so if you want to learn more, you should check out their [article about color blindness](#).


## Dichromacy



**Original Color**  
CC3D77

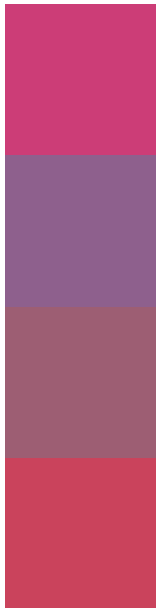
**Protanopia**  
6B7499

**Deuteranopia**  
827170



**Tritanopia**  
C9474C

# Trichromacy



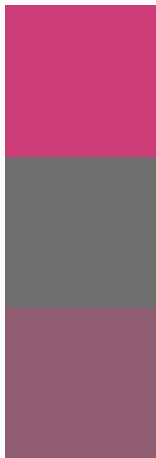
**Original Color**  
CC3D77

**Protanomaly**  
8E608D

**Deuteranomaly**  
9D5E73

**Tritanomaly**  
CA435C

# Monochromacy



**Original Color**  
CC3D77

**Achromatopsia**  
6E6E6E

**Achromatomaly**  
905C71

# CSS Examples

## Text

The CSS property to change the color of the text to Hex CC3D77 is called "color". The color property can be set on classes, ids or directly on the HTML element.

This example shows how text in the color #CC3D77 looks like.

```
.text, #text, p{  
    color:#CC3D77  
}
```

If you want to add a text shadow in that color use the text-shadow property, you can generate a text shadow directly with our [CSS Text Shadow Generator](#).

Here you see how black text with a 4 pixel #CC3D77 colored shadow looks like.

```
.shadow{ text-shadow: 4px 4px 2px #CC3D77  
}
```

## Border

The CSS property to change the border of an element to Hex CC3D77 is called "border". The border property can be set on classes, ids or directly on the HTML element.

This example shows the color as border, it can be applied via the CSS property "border" or "border-color".

```
.border, #border, table{ border:4px solid  
#CC3D77 }
```

If only the border color should be changed use the property `border-color`.

```
.border{ border-color:#CC3D77 }
```

If you want to add a box shadow in that color use:

Here you see how a box with a 4 pixel #CC3D77 colored shadow looks like.

```
.boxshadow{ -moz-box-shadow:4px 4px 4px  
4px #CC3D77; -webkit-box-shadow:4px 4px  
4px 4px #CC3D77; box-shadow:4px 4px 4px  
4px #CC3D77 }
```

# Background

The CSS property to change the background color of an element to Hex CC3D77 is called "background". The background property can be set on classes, ids or directly on the HTML element.

```
.background, #background, body{  
background:#CC3D77 }
```

If only the background color should be changed can be used:

```
.background{ background-color:#CC3D77 }
```

This example shows the color as background, it is applied via the CSS property "background".

To optimize and compress your CSS code, you can use our [online CSS compressor and optimizer](#) based on csstidy. If you want to create a linear or radial gradient as background or border, check our [CSS Gradient Generator](#).



Hey! You found this booklet interesting? Support Converting Colors with the new Membership Option!

The pro membership hides all ads, plus gives you double the colors in the color bucket, and more awesome pro features!

**[Learn more, Memberships starting at \\$2.50/m!](#)**

**Follow me  
on Twitter!**

@ConvertingColor