

# Converting Colors

Hex(CC508A)

Have a look what the booklet for  
Hex(CC508A) contains.

<b>Hex(CC508A)</b> .....	3
<i><b>Conversions</b></i> .....	4
<i><b>Details</b></i> .....	6
<i><b>Harmonies</b></i> .....	11
<i><b>Previews</b></i> .....	23
<i><b>Color Blindness Simulation</b></i> .....	26
<i><b>CSS Examples</b></i> .....	29

# Color

**Hex(CC508A)**

# Conversions

## Conversions Part 1

<b>Format</b>	<b>Color</b>
Hex	CC508A
RGB	204, 80, 138
RGB Percent	80%, 31%, 54%
CMY	0.2000, 0.6863, 0.4588
CMYK	0.00, 0.61, 0.32, 0.20
HSL	332°, 55%, 56%
HSV	332°, 61%, 80%
XYZ	32.3579, 20.4097, 26.2788
YIQ	123.6880, 55.2860, 44.3260

# Conversions

## Conversions Part 2

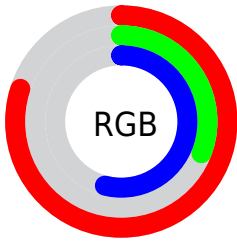
<b>Format</b>	<b>Color</b>
<b>R<sub>YB</sub></b>	204, 80, 138
Decimal	13389962
CIE <sub>Lab</sub>	52.30, 54.74, -6.77
CIE <sub>LCh</sub>	52, 55.160, 352.952
Yxy	20.4097, 0.4094, 0.2582
Android (android.graphics.Color)	4291580042 (0xFFCC508A)
YUV	123.6880, 7.0558, 70.4336
Hunter-Lab	45.1771, 48.7903, -2.8641

# Details

The Hex color **CC508A** is a dark color, and the websafe version is hex **CC6699**. The color can be described as middle muted rose. A complement of this color would be **50CC92**, and the grayscale version is **7C7C7C**.

A 20% lighter version of the original color is **FF87BF**, and **921158** is the 20% darker color. If you saturate the color by 10%, you get **CC3C7F**, and if you desaturate by 10%, it is **CC6495**.

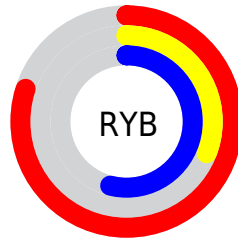
# Distribution



Red (80%)

Green (31%)

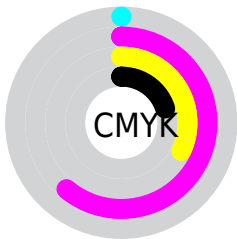
Blue (54%)



Red (80%)

Yellow (31%)

Blue (54%)

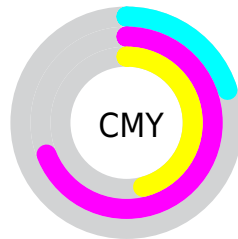


Cyan (0%)

Magenta (61%)

Yellow (32%)

Black (20%)



Cyan (20%)

Magenta (69%)

Yellow (46%)

# Brightness & Saturation Gradients

These gradients show how the Hex color CC508A changes by changing the brightness by 10 percent. The first figure shows a shift by +10% for each color and the second figure -10%.

Similar to the brightness gradients but the following saturation gradients show a change of the Hex color CC508A by changing the saturation by 10% instead.



 CC508A

 CC508A

FFFFFF

 AF3471

 FF87BF

 921158

 FFA3DB

 760041

 FFBFF8

 5A002B

 FFDCFF

 400017

 FFF9FF

 230001

 000000

 CC508A

 CC508A

 CC3C7F

 CC6495

 CC2774

 CC79A0

 CC1369

 CC8DAB

 CC005F

 CCA2B5

 CCB6C0

 CCCACB

 CCDFD6

 CCF3E1

 CCF FEC

# Harmonies

## Analogous

The Analogous color harmony consists of three colors that are next to each other on the color wheel.



AB60B6



CC508A



D1525B

# Triad

The Triadic color harmony groups three colors that are evenly spaced from another and form a triangle on the color wheel.



CC508A



71851A



008FC8

# Complementary

The Complementary color scheme is a pair of colors which are on the opposite of each other on the color wheel.



CC508A



50CC92

# Split Complementary

Split-complementary colors differ from the complementary color scheme. The scheme consists of three colors, the original color and two neighbors of the complement color.



0093A0



CC508A



328E40

# Square

The Square scheme is like the rectangle color scheme, but the four colors are evenly spaced on the color wheel.



CC508A



9E7712



009270



0086DB

# Rectangle

The Rectangle color scheme consists of four colors that form a rectangle on the color wheel.



CC508A



C85D3E



009270



0091BC



# Sweetspot

The Sweet Spot groups the original color and five complimentary colors.



CC508A



FFD1E7



9050CC



806371



000000



808080



# Same Dimension

The Same Dimension uses a secret algorithm to generate beautiful new colors.



CC508A



FF459C



CC5250



665C61



A6004E



260012



# Inverse Universe

The Inverse Universe completely reimagines the original color for something new.



CC508A



FF459C



50CACC



665C61



A6004E



260012



# Previews

## White Background



This preview shows how the Hex color CC508A looks on a white background.

## Color Contrast Check

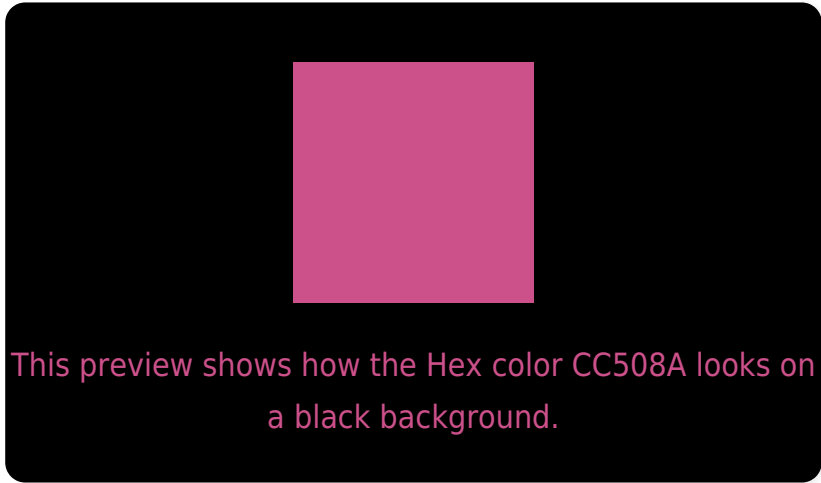
Large Text (above 18pt) WCAG AA ✓ Pass

Any Text WCAG AA × Fail

Large Text (above 18pt) WCAG AAA × Fail

Any Text WCAG AAA × Fail

# Black Background



## Color Contrast Check

Large Text (above 18pt) WCAG AA ✓ Pass

Any Text WCAG AA ✓ Pass

Large Text (above 18pt) WCAG AAA ✓ Pass

Any Text WCAG AAA × Fail

If you want to check with other color combinations, try the [Color Contrast Checker](#).



## Hex CC508A Background



This preview shows how black text looks on a background with the Hex color CC508A.

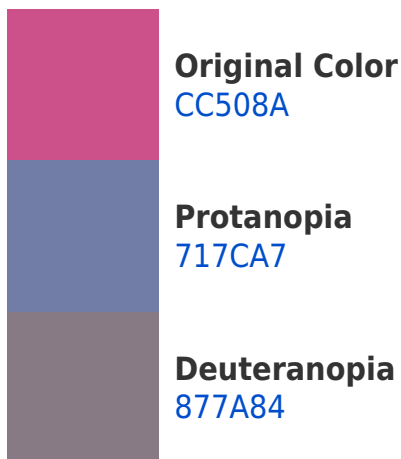


This preview shows how white text looks on a background with the Hex color CC508A.

# Color Blindness Simulation

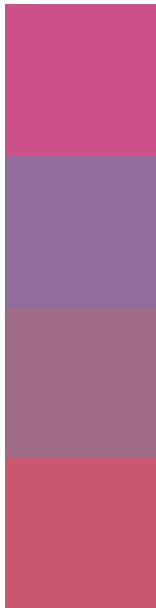
Color vision deficiency is a very complex topic, and I could not describe the different causes any better than Wikipedia does, so if you want to learn more, you should check out their [article about color blindness](#).

## Dichromacy





# Trichromacy



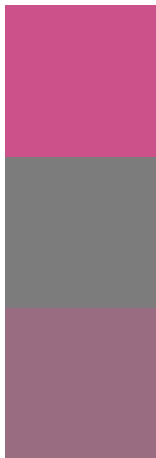
**Original Color**  
CC508A

**Protanomaly**  
926C9C

**Deuteranomaly**  
A06B86

**Tritanomaly**  
CA566F

# Monochromacy



**Original Color**  
CC508A

**Achromatopsia**  
7C7C7C

**Achromatomaly**  
996C81

# CSS Examples

## Text

The CSS property to change the color of the text to Hex CC508A is called "color". The color property can be set on classes, ids or directly on the HTML element.

This example shows how text in the color #CC508A looks like.

```
.text, #text, p{  
    color:#CC508A  
}
```

If you want to add a text shadow in that color use the text-shadow property, you can generate a text shadow directly with our [CSS Text Shadow Generator](#).

Here you see how black text with a 4 pixel #CC508A colored shadow looks like.

```
.shadow{ text-shadow: 4px 4px 2px #CC508A
}
```

## Border

The CSS property to change the border of an element to Hex CC508A is called "border". The border property can be set on classes, ids or directly on the HTML element.

This example shows the color as border, it can be applied via the CSS property "border" or "border-color".

```
.border, #border, table{ border:4px solid
#CC508A }
```

If only the border color should be changed use the property `border-color`.

```
.border{ border-color:#CC508A }
```

If you want to add a box shadow in that color use:

Here you see how a box with a 4 pixel #CC508A colored shadow looks like.

```
.boxshadow{ -moz-box-shadow:4px 4px 4px  
4px #CC508A; -webkit-box-shadow:4px 4px  
4px 4px #CC508A; box-shadow:4px 4px 4px  
4px #CC508A }
```

# Background

The CSS property to change the background color of an element to Hex CC508A is called "background". The background property can be set on classes, ids or directly on the HTML element.

```
.background, #background, body{  
background:#CC508A }
```

If only the background color should be changed can be used:

```
.background{ background-color:#CC508A }
```

This example shows the color as background, it is applied via the CSS property "background".

To optimize and compress your CSS code, you can use our [online CSS compressor and optimizer](#) based on csstidy. If you want to create a linear or radial gradient as background or border, check our [CSS Gradient Generator](#).



Hey! You found this booklet interesting? Support Converting Colors with the new Membership Option!

The pro membership hides all ads, plus gives you double the colors in the color bucket, and more awesome pro features!

**[Learn more, Memberships starting at \\$2.50/m!](#)**

**Follow me  
on Twitter!**

@ConvertingColor