

# Converting Colors

Hex(CC8383)

Have a look what the booklet for  
Hex(CC8383) contains.

<b>Hex(CC8383)</b> .....	3
<i><b>Conversions</b></i> .....	4
<i><b>Details</b></i> .....	6
<i><b>Harmonies</b></i> .....	11
<i><b>Previews</b></i> .....	23
<i><b>Color Blindness Simulation</b></i> .....	26
<i><b>CSS Examples</b></i> .....	29

# **Color**

**Hex(CC8383)**

# Conversions

## Conversions Part 1

<b>Format</b>	<b>Color</b>
Hex	CC8383
RGB	204, 131, 131
RGB Percent	80%, 51%, 51%
CMY	0.2000, 0.4863, 0.4863
CMYK	0.00, 0.36, 0.36, 0.20
HSL	0°, 42%, 66%
HSV	0°, 36%, 80%
XYZ	37.1149, 30.7087, 25.4439
YIQ	152.8270, 43.5080, 15.4760

# Conversions

## Conversions Part 2

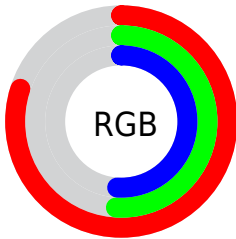
<b>Format</b>	<b>Color</b>
<b>R<sub>YB</sub></b>	204, 131, 131
Decimal	13403011
CIE <sub>Lab</sub>	62.26, 28.13, 11.74
CIE <sub>LCh</sub>	62, 30.482, 22.661
Yxy	30.7087, 0.3979, 0.3293
Android (android.graphics.Color)	4291593091 (0xFFCC8383)
YUV	152.8270, -10.7607, 44.8787
Hunter-Lab	55.4154, 22.5748, 11.5678

# Details

The Hex color **CC8383** is a light color, and the websafe version is hex **CC9999**. A complement of this color would be **83CCCC**, and the grayscale version is **999999**.

A 20% lighter version of the original color is **FFB9B8**, and **945052** is the 20% darker color. If you saturate the color by 10%, you get **CC6F6F**, and if you desaturate by 10%, it is **CC9797**.

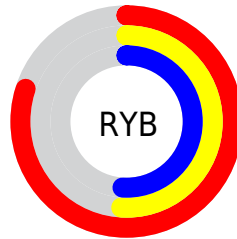
# Distribution



Red (80%)

Green (51%)

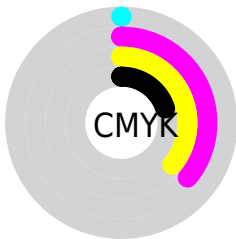
Blue (51%)



Red (80%)

Yellow (51%)

Blue (51%)

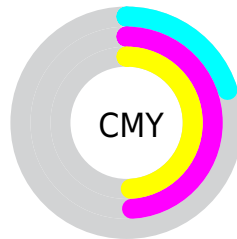


Cyan (0%)

Magenta (36%)

Yellow (36%)

Black (20%)



Cyan (20%)

Magenta (49%)

Yellow (49%)

# Brightness & Saturation Gradients

These gradients show how the Hex color CC8383 changes by changing the brightness by 10 percent. The first figure shows a shift by +10% for each color and the second figure -10%.

Similar to the brightness gradients but the following saturation gradients show a change of the Hex color CC8383 by changing the saturation by 10% instead.



 CC8383

 CC8383

FFFFFF

 B0696A

 FFB9B8

 945052

 FFD5D4

 78383B

 FFF1F0

 5E2125

 440811

 2D0000

 000000

 CC8383

 CC8383

 CC6F6F

 CC9797

 CC5A5A

 CCACAC

 CC4646

 CCC0C0

 CC3131

 CCD5D5

 CC1D1D

 CCE9E9

 CC0909

 CCFDFD

 CC0000

 CCFFFF

# Harmonies

## Analogous

The Analogous color harmony consists of three colors that are next to each other on the color wheel.



C7839E



CC8383



C3896D

# Triad

The Triadic color harmony groups three colors that are evenly spaced from another and form a triangle on the color wheel.



CC8383



75A175



679BCC

# Complementary

The Complementary color scheme is a pair of colors which are on the opposite of each other on the color wheel.



CC8383



83CCCC

# Split Complementary

Split-complementary colors differ from the complementary color scheme. The scheme consists of three colors, the original color and two neighbors of the complement color.



41A2C1



CC8383



54A58F

# Square

The Square scheme is like the rectangle color scheme, but the four colors are evenly spaced on the color wheel.



CC8383



949B64



3AA5AA



9192C8

# Rectangle

The Rectangle color scheme consists of four colors that form a rectangle on the color wheel.



CC8383



B78F63



3AA5AA



599EC9



# Sweetspot

The Sweet Spot groups the original color and five complimentary colors.



CC8383



FFE3E3



CC83CC



806F6F



000000



808080



# Same Dimension

The Same Dimension uses a secret algorithm to generate beautiful new colors.



CC8383



FF9191



CCA883



665C5C



A60000



260000



# Inverse Universe

The Inverse Universe completely reimagines the original color for something new.



83CCCC



91FFFF



83A8CC



5C6666



00A6A6

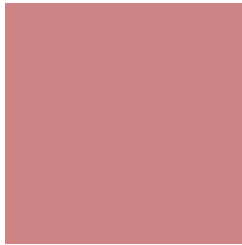


002626



# Previews

## White Background



This preview shows how the Hex color CC8383 looks on a white background.

## Color Contrast Check

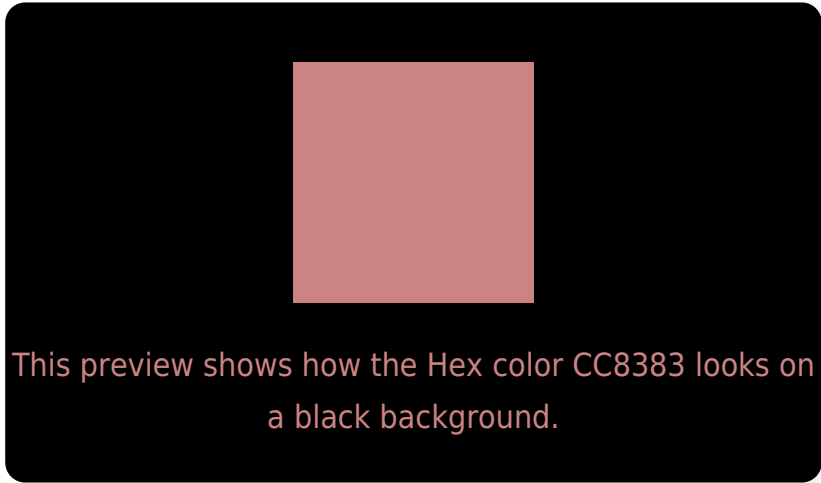
Large Text (above 18pt) WCAG AA × Fail

Any Text WCAG AA × Fail

Large Text (above 18pt) WCAG AAA × Fail

Any Text WCAG AAA × Fail

# Black Background



## Color Contrast Check

Large Text (above 18pt) WCAG AA ✓ Pass

Any Text WCAG AA ✓ Pass

Large Text (above 18pt) WCAG AAA ✓ Pass

Any Text WCAG AAA ✓ Pass

If you want to check with other color combinations, try the [Color Contrast Checker](#).



## Hex CC8383 Background



This preview shows how black text looks on a background with the Hex color CC8383.

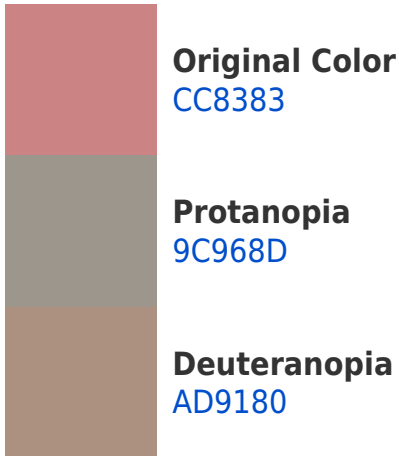


This preview shows how white text looks on a background with the Hex color CC8383.

# Color Blindness Simulation

Color vision deficiency is a very complex topic, and I could not describe the different causes any better than Wikipedia does, so if you want to learn more, you should check out their [article about color blindness](#).

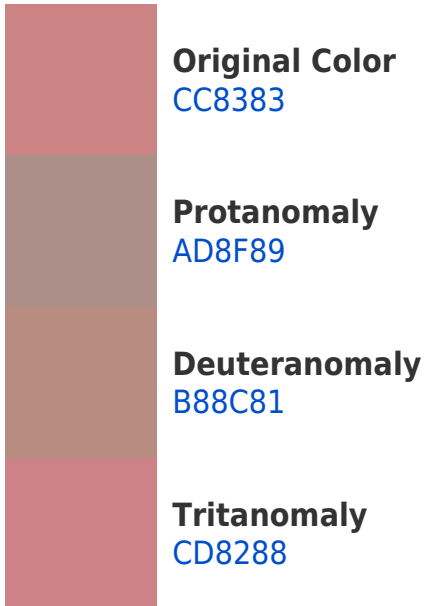
## Dichromacy



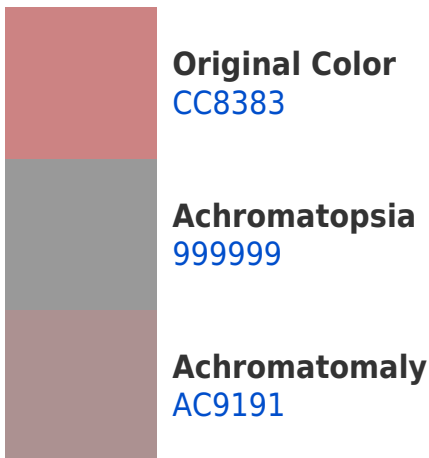


**Tritanopia**  
CD828B

# Trichromacy



# Monochromacy



# CSS Examples

## Text

The CSS property to change the color of the text to Hex CC8383 is called "color". The color property can be set on classes, ids or directly on the HTML element.

This example shows how text in the color #CC8383 looks like.

```
.text, #text, p{  
    color:#CC8383  
}
```

If you want to add a text shadow in that color use the text-shadow property, you can generate a text shadow directly with our [CSS Text Shadow Generator](#).

Here you see how black text with a 4 pixel #CC8383 colored shadow looks like.

```
.shadow{ text-shadow: 4px 4px 2px #CC8383
}
```

## Border

The CSS property to change the border of an element to Hex CC8383 is called "border". The border property can be set on classes, ids or directly on the HTML element.

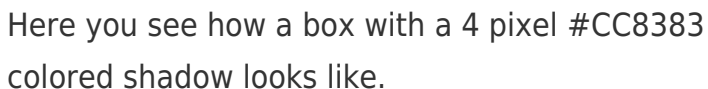
This example shows the color as border, it can be applied via the CSS property "border" or "border-color".

```
.border, #border, table{ border:4px solid
#CC8383 }
```

If only the border color should be changed use the property `border-color`.

```
.border{ border-color:#CC8383 }
```

If you want to add a box shadow in that color use:

A rectangular box with a 4px red shadow. The box is white with a thin red border. The shadow is a darker red color, extending 4 pixels from the bottom and right edges of the box.

Here you see how a box with a 4 pixel #CC8383 colored shadow looks like.

```
.boxshadow{ -moz-box-shadow:4px 4px 4px  
4px #CC8383; -webkit-box-shadow:4px 4px  
4px 4px #CC8383; box-shadow:4px 4px 4px  
4px #CC8383 }
```

# Background

The CSS property to change the background color of an element to Hex CC8383 is called "background". The background property can be set on classes, ids or directly on the HTML element.

```
.background, #background, body{  
background:#CC8383 }
```

If only the background color should be changed can be used:

```
.background{ background-color:#CC8383 }
```

This example shows the color as background, it is applied via the CSS property "background".

To optimize and compress your CSS code, you can use our [online CSS compressor and optimizer](#) based on csstidy. If you want to create a linear or radial gradient as background or border, check our [CSS Gradient Generator](#).



Hey! You found this booklet interesting? Support Converting Colors with the new Membership Option!

The pro membership hides all ads, plus gives you double the colors in the color bucket, and more awesome pro features!

**[Learn more, Memberships starting at \\$2.50/m!](#)**

**Follow me  
on Twitter!**

@ConvertingColor