

# Converting Colors

Hex(CC928E)

Have a look what the booklet for  
Hex(CC928E) contains.

<b>Hex(CC928E)</b> .....	3
<i><b>Conversions</b></i> .....	4
<i><b>Details</b></i> .....	6
<i><b>Harmonies</b></i> .....	11
<i><b>Previews</b></i> .....	23
<i><b>Color Blindness Simulation</b></i> .....	26
<i><b>CSS Examples</b></i> .....	29

# **Color**

**Hex(CC928E)**

# Conversions

## Conversions Part 1

Format	Color
Hex	CC928E
RGB	204, 146, 142
RGB Percent	80%, 57%, 56%
CMY	0.2000, 0.4275, 0.4431
CMYK	0.00, 0.28, 0.30, 0.20
HSL	4°, 38%, 68%
HSV	4°, 30%, 80%
XYZ	40.0632, 35.3481, 30.3025
YIQ	162.8860, 35.8520, 11.0520

# Conversions

## Conversions Part 2

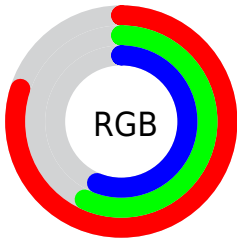
Format	Color
<a href="#">RYB</a>	<a href="#">204, 146, 142</a>
Decimal	<a href="#">13406862</a>
CIELab	<a href="#">66.02, 21.36, 10.83</a>
CIElCh	<a href="#">66, 23.952, 26.892</a>
Yxy	<a href="#">35.3481, 0.3790, 0.3344</a>
Android (android.graphics.Color)	<a href="#">4291596942 (0xFFCC928E)</a>
YUV	<a href="#">162.8860, -10.2968, 36.0570</a>
Hunter-Lab	<a href="#">59.4543, 16.2370, 11.3992</a>

# Details

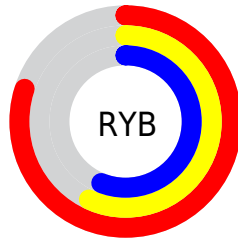
The Hex color **CC928E** is a light color, and the websafe version is hex **CC9999**. A complement of this color would be **8EC8CC**, and the grayscale version is **A3A3A3**.

A 20% lighter version of the original color is **FFC8C4**, and **945F5C** is the 20% darker color. If you saturate the color by 10%, you get **CC7F7A**, and if you desaturate by 10%, it is **CCA5A2**.

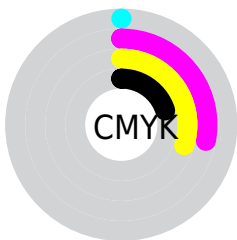
# Distribution



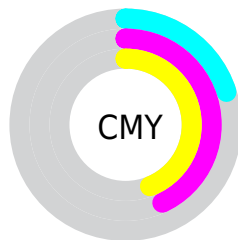
- Red (80%)
- Green (57%)
- Blue (56%)



- Red (80%)
- Yellow (57%)
- Blue (56%)



- Cyan (0%)
- Magenta (28%)
- Yellow (30%)
- Black (20%)



- Cyan (20%)
- Magenta (43%)
- Yellow (44%)

# Brightness & Saturation Gradients

These gradients show how the Hex color CC928E changes by changing the brightness by 10 percent. The first figure shows a shift by +10% for each color and the second figure -10%.

Similar to the brightness gradients but the following saturation gradients show a change of the Hex color CC928E by changing the saturation by 10% instead.



 CC928E

 CC928E

FFFFFF

 B07874

 FFC8C4

 945F5C

 FFE4E0

 7A4744

FFFFFFC

 5F302E

 461A19

 2F0300

 0B0000

 000000

 CC928E

 CC928E

 CC7F7A

 CCA5A2

 CC6C65

 CCB8B7

 CC5951

 CCCBCB

 CC463C

 CCDEE0

 CC3328

 CCF1F4

 CC1F14

 CCFFFF

 CC0D00

# Harmonies

## Analogous

The Analogous color harmony consists of three colors that are next to each other on the color wheel.



C991A4



CC928E



C4977D

# Triad

The Triadic color harmony groups three colors that are evenly spaced from another and form a triangle on the color wheel.



CC928E



83AA88



83A3CB

# Complementary

The Complementary color scheme is a pair of colors which are on the opposite of each other on the color wheel.



CC928E



8EC8CC

# Split Complementary

Split-complementary colors differ from the complementary color scheme. The scheme consists of three colors, the original color and two neighbors of the complement color.



6AA9C4



CC928E



6DAC9D

# Square

The Square scheme is like the rectangle color scheme, but the four colors are evenly spaced on the color wheel.



CC928E



9CA57A



61ACB3



A19CC7

# Rectangle

The Rectangle color scheme consists of four colors that form a rectangle on the color wheel.



CC928E



B99C77



61ACB3



79A5CA

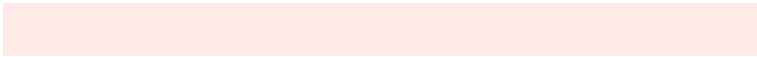


# Sweetspot

The Sweet Spot groups the original color and five complimentary colors.



CC928E



FFEAE8



CC8EC9



807271



000000



808080



# Same Dimension

The Same Dimension uses a secret algorithm to generate beautiful new colors.



CC928E



FFA9A3



CCB08E



665C5C



A60B00



260200



# Inverse Universe

The Inverse Universe completely reimagines the original color for something new.



8EC8CC



A3F9FF



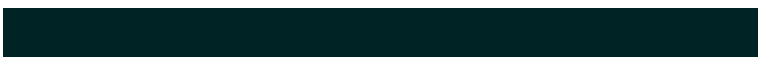
8EAACC



5C6566



009BA6

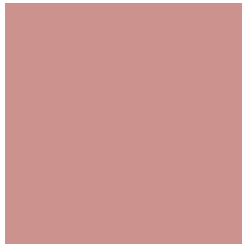


002426



# Previews

## White Background



This preview shows how the Hex color CC928E looks on a white background.

## Color Contrast Check

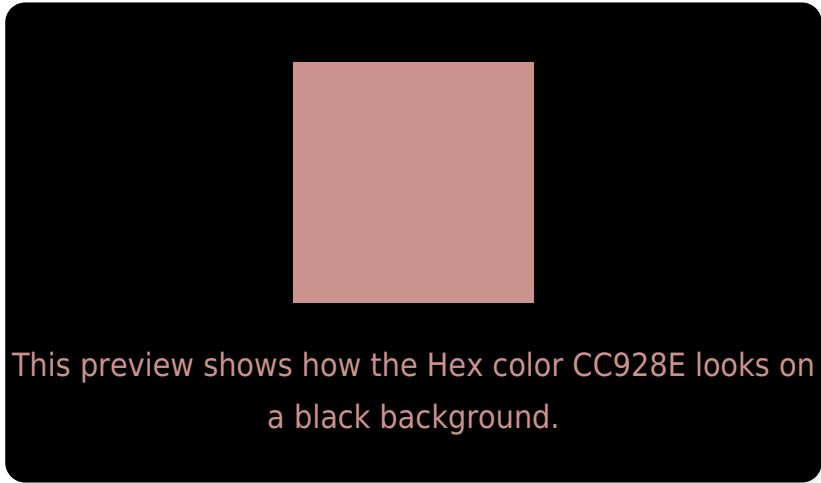
Large Text (above 18pt) WCAG AA × Fail

Any Text WCAG AA × Fail

Large Text (above 18pt) WCAG AAA × Fail

Any Text WCAG AAA × Fail

# Black Background



## Color Contrast Check

Large Text (above 18pt) WCAG AA ✓ Pass

Any Text WCAG AA ✓ Pass

Large Text (above 18pt) WCAG AAA ✓ Pass

Any Text WCAG AAA ✓ Pass

If you want to check with other color combinations, try the [Color Contrast Checker](#).



## Hex CC928E Background



This preview shows how black text looks on a background with the Hex color CC928E.



This preview shows how white text looks on a background with the Hex color CC928E.

# Color Blindness Simulation

Color vision deficiency is a very complex topic, and I could not describe the different causes any better than Wikipedia does, so if you want to learn more, you should check out their [article about color blindness](#).

## Dichromacy





**Tritanopia**  
CD909B

# Trichromacy



**Original Color**  
CC928E

**Protanomaly**  
B49B92

**Deuteranomaly**  
BF988D

**Tritanomaly**  
CD9196

# Monochromacy



**Original Color**  
CC928E

**Achromatopsia**  
A3A3A3

**Achromatomaly**  
B29D9B

# CSS Examples

## Text

The CSS property to change the color of the text to Hex CC928E is called "color". The color property can be set on classes, ids or directly on the HTML element.

This example shows how text in the color #CC928E looks like.

```
.text, #text, p{  
    color:#CC928E  
}
```

If you want to add a text shadow in that color use the text-shadow property, you can generate a text shadow directly with our [CSS Text Shadow Generator](#).

Here you see how black text with a 4 pixel #CC928E colored shadow looks like.

```
.shadow{ text-shadow: 4px 4px 2px #CC928E
}
```

## Border

The CSS property to change the border of an element to Hex CC928E is called "border". The border property can be set on classes, ids or directly on the HTML element.

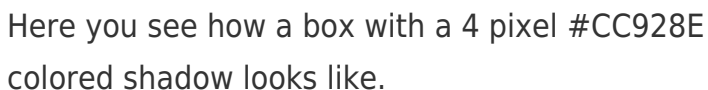
This example shows the color as border, it can be applied via the CSS property "border" or "border-color".

```
.border, #border, table{ border:4px solid
#CC928E }
```

If only the border color should be changed use the property `border-color`.

```
.border{ border-color:#CC928E }
```

If you want to add a box shadow in that color use:



Here you see how a box with a 4 pixel #CC928E colored shadow looks like.

```
.boxshadow{ -moz-box-shadow:4px 4px 4px  
4px #CC928E; -webkit-box-shadow:4px 4px  
4px 4px #CC928E; box-shadow:4px 4px 4px  
4px #CC928E }
```

# Background

The CSS property to change the background color of an element to Hex CC928E is called "background". The background property can be set on classes, ids or directly on the HTML element.

```
.background, #background, body{  
background:#CC928E }
```

If only the background color should be changed can be used:

```
.background{ background-color:#CC928E }
```

This example shows the color as background, it is applied via the CSS property "background".

To optimize and compress your CSS code, you can use our [online CSS compressor and optimizer](#) based on csstidy. If you want to create a linear or radial gradient as background or border, check our [CSS Gradient Generator](#).



Hey! You found this booklet interesting? Support Converting Colors with the new Membership Option!

The pro membership hides all ads, plus gives you double the colors in the color bucket, and more awesome pro features!

**[Learn more, Memberships starting at \\$2.50/m!](#)**

**Follow me  
on Twitter!**

@ConvertingColor