

# Converting Colors

Hex(CC9894)

Have a look what the booklet for  
Hex(CC9894) contains.

<b>Hex(CC9894)</b> .....	3
<i><b>Conversions</b></i> .....	4
<i><b>Details</b></i> .....	6
<i><b>Harmonies</b></i> .....	11
<i><b>Previews</b></i> .....	23
<i><b>Color Blindness Simulation</b></i> .....	26
<i><b>CSS Examples</b></i> .....	29

# **Color**

**Hex(CC9894)**

# Conversions

## Conversions Part 1

<b>Format</b>	<b>Color</b>
Hex	CC9894
RGB	204, 152, 148
RGB Percent	80%, 60%, 58%
CMY	0.2000, 0.4039, 0.4196
CMYK	0.00, 0.25, 0.27, 0.20
HSL	4°, 35%, 69%
HSV	4°, 27%, 80%
XYZ	41.4754, 37.4320, 33.0561
YIQ	167.0920, 32.2760, 9.7800

# Conversions

## Conversions Part 2

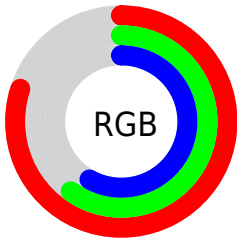
<b>Format</b>	<b>Color</b>
<b>R<sub>YB</sub></b>	204, 152, 148
Decimal	13408404
CIE <sub>Lab</sub>	67.60, 18.90, 9.72
CIE <sub>LCh</sub>	68, 21.254, 27.211
Yxy	37.4320, 0.3704, 0.3343
Android (android.graphics.Color)	4291598484 (0xFFCC9894)
YUV	167.0920, -9.4124, 32.3683
Hunter-Lab	61.1817, 13.9382, 10.7931

# Details

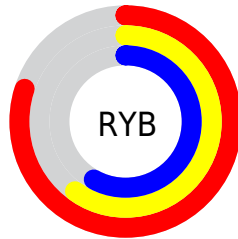
The Hex color **CC9894** is a light color, and the websafe version is hex **CC9999**. A complement of this color would be **94C8CC**, and the grayscale version is **A7A7A7**.

A 20% lighter version of the original color is **FFCECA**, and **956561** is the 20% darker color. If you saturate the color by 10%, you get **CC8580**, and if you desaturate by 10%, it is **CCABA8**.

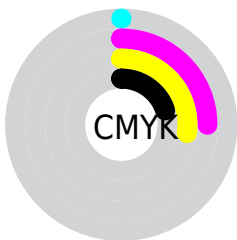
# Distribution



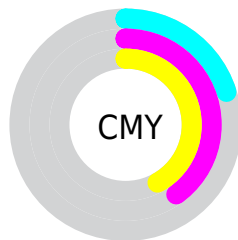
- Red (80%)
- Green (60%)
- Blue (58%)



- Red (80%)
- Yellow (60%)
- Blue (58%)



- Cyan (0%)
- Magenta (25%)
- Yellow (27%)
- Black (20%)



- Cyan (20%)
- Magenta (40%)
- Yellow (42%)

# Brightness & Saturation Gradients

These gradients show how the Hex color CC9894 changes by changing the brightness by 10 percent. The first figure shows a shift by +10% for each color and the second figure -10%.

Similar to the brightness gradients but the following saturation gradients show a change of the Hex color CC9894 by changing the saturation by 10% instead.



 CC9894

 CC9894

FFFFFF

 B07E7A

 FFCECA

 956561

 FFEBE6

 7A4C4A

 603533

 471F1E

 300A05

 140000

 000000

 CC9894

 CC9894

 CC8580

 CCABA8

 CC726B

 CCBEBD

 CC5F57

 CCD1D1

 CC4C42

 CCE4E6

 CC392E

 CCF7FA

 CC261A

 CCFFFF

 CC1305

 CC0F00

# Harmonies

## Analogous

The Analogous color harmony consists of three colors that are next to each other on the color wheel.



C997A7



CC9894



C49C85

# Triad

The Triadic color harmony groups three colors that are evenly spaced from another and form a triangle on the color wheel.



CC9894



8AAD8F



8CA7CA

# Complementary

The Complementary color scheme is a pair of colors which are on the opposite of each other on the color wheel.



CC9894



94C8CC

# Split Complementary

Split-complementary colors differ from the complementary color scheme. The scheme consists of three colors, the original color and two neighbors of the complement color.



76ACC4



CC9894



78AFA2

# Square

The Square scheme is like the rectangle color scheme, but the four colors are evenly spaced on the color wheel.



CC9894



A0A982



6FAFB5



A6A0C7

# Rectangle

The Rectangle color scheme consists of four colors that form a rectangle on the color wheel.



CC9894



BBA180



6FAFB5



84A9C9

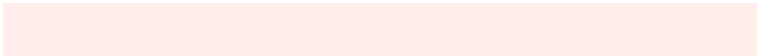


# Sweetspot

The Sweet Spot groups the original color and five complimentary colors.



CC9894



FFECEB



CC94C8



807473



000000



808080



# Same Dimension

The Same Dimension uses a secret algorithm to generate beautiful new colors.



CC9894



FFB1AB



CCB494



665D5C



A60C00



260300



# Inverse Universe

The Inverse Universe completely reimagines the original color for something new.



94C8CC



ABF9FF



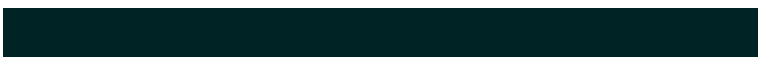
94ACCC



5C6566



009AA6

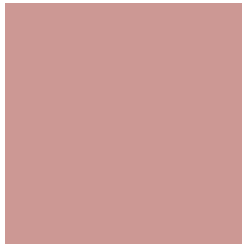


002426



# Previews

## White Background



This preview shows how the Hex color CC9894 looks on a white background.

## Color Contrast Check

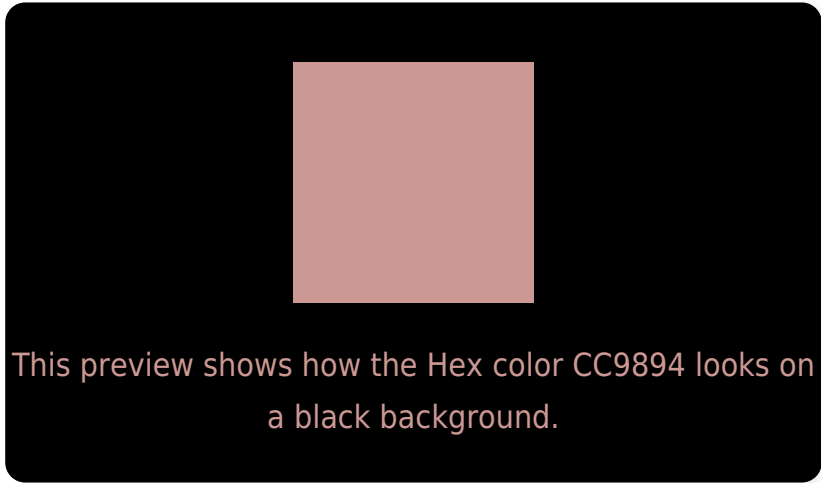
Large Text (above 18pt) WCAG AA × Fail

Any Text WCAG AA × Fail

Large Text (above 18pt) WCAG AAA × Fail

Any Text WCAG AAA × Fail

# Black Background



## Color Contrast Check

Large Text (above 18pt) WCAG AA ✓ Pass

Any Text WCAG AA ✓ Pass

Large Text (above 18pt) WCAG AAA ✓ Pass

Any Text WCAG AAA ✓ Pass

If you want to check with other color combinations, try the [Color Contrast Checker](#).



## Hex CC9894 Background



This preview shows how black text looks on a background with the Hex color CC9894.



This preview shows how white text looks on a background with the Hex color CC9894.

# Color Blindness Simulation

Color vision deficiency is a very complex topic, and I could not describe the different causes any better than Wikipedia does, so if you want to learn more, you should check out their [article about color blindness](#).


## Dichromacy



**Original Color**  
CC9894

**Protanopia**  
AAA49B

**Deuteranopia**  
BC9F93



**Tritanopia**  
CD96A1

# Trichromacy



**Original Color**  
CC9894

**Protanomaly**  
B6A098

**Deuteranomaly**  
C29C93

**Tritanomaly**  
CD979C

# Monochromacy



**Original Color**  
CC9894

**Achromatopsia**  
A7A7A7

**Achromatomaly**  
B4A2A0

# CSS Examples

## Text

The CSS property to change the color of the text to Hex CC9894 is called "color". The color property can be set on classes, ids or directly on the HTML element.

This example shows how text in the color #CC9894 looks like.

```
.text, #text, p{  
    color:#CC9894  
}
```

If you want to add a text shadow in that color use the text-shadow property, you can generate a text shadow directly with our [CSS Text Shadow Generator](#).

Here you see how black text with a 4 pixel #CC9894 colored shadow looks like.

```
.shadow{ text-shadow: 4px 4px 2px #CC9894
}
```

## Border

The CSS property to change the border of an element to Hex CC9894 is called "border". The border property can be set on classes, ids or directly on the HTML element.

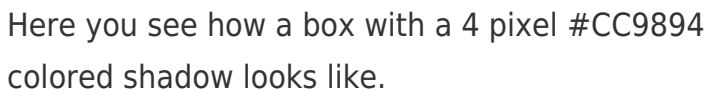
This example shows the color as border, it can be applied via the CSS property "border" or "border-color".

```
.border, #border, table{ border:4px solid
#CC9894 }
```

If only the border color should be changed use the property `border-color`.

```
.border{ border-color:#CC9894 }
```

If you want to add a box shadow in that color use:



Here you see how a box with a 4 pixel #CC9894 colored shadow looks like.

```
.boxshadow{ -moz-box-shadow:4px 4px 4px  
4px #CC9894; -webkit-box-shadow:4px 4px  
4px 4px #CC9894; box-shadow:4px 4px 4px  
4px #CC9894 }
```

# Background

The CSS property to change the background color of an element to Hex CC9894 is called "background". The background property can be set on classes, ids or directly on the HTML element.

```
.background, #background, body{  
background:#CC9894 }
```

If only the background color should be changed can be used:

```
.background{ background-color:#CC9894 }
```

This example shows the color as background, it is applied via the CSS property "background".

To optimize and compress your CSS code, you can use our [online CSS compressor and optimizer](#) based on csstidy. If you want to create a linear or radial gradient as background or border, check our [CSS Gradient Generator](#).



Hey! You found this booklet interesting? Support Converting Colors with the new Membership Option!

The pro membership hides all ads, plus gives you double the colors in the color bucket, and more awesome pro features!

**[Learn more, Memberships starting at \\$2.50/m!](#)**

**Follow me  
on Twitter!**

@ConvertingColor