

# Converting Colors

Hex(CCA299)

Have a look what the booklet for  
Hex(CCA299) contains.

<b>Hex(CCA299)</b> .....	3
<b><i>Conversions</i></b> .....	4
<b><i>Details</i></b> .....	6
<b><i>Harmonies</i></b> .....	11
<b><i>Previews</i></b> .....	23
<b><i>Color Blindness Simulation</i></b> .....	26
<b><i>CSS Examples</i></b> .....	29

# **Color**

**Hex(CCA299)**

# Conversions

## Conversions Part 1

Format	Color
Hex	CCA299
RGB	204, 162, 153
RGB Percent	80%, 64%, 60%
CMY	0.2000, 0.3647, 0.4000
CMYK	0.00, 0.21, 0.25, 0.20
HSL	11°, 33%, 70%
HSV	11°, 25%, 80%
XYZ	43.5719, 40.9779, 35.7500
YIQ	173.5320, 27.9210, 6.1050

# Conversions

## Conversions Part 2

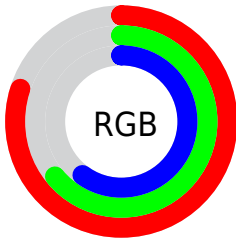
Format	Color
<a href="#">RYB</a>	<a href="#">204, 164, 153</a>
Decimal	<a href="#">13410969</a>
CIELab	<a href="#">70.16, 14.15, 10.58</a>
CIELCh	<a href="#">70, 17.666, 36.778</a>
Yxy	<a href="#">40.9779, 0.3622, 0.3406</a>
Android (android.graphics.Color)	<a href="#">4291601049 (0xFFCCA299)</a>
YUV	<a href="#">173.5320, -10.1223, 26.7204</a>
Hunter-Lab	<a href="#">64.0140, 9.4737, 11.6980</a>

# Details

The Hex color **CCA299** is a light color, and the websafe version is hex **CC9999**. A complement of this color would be **99C3CC**, and the grayscale version is **AEAEAE**.

A 20% lighter version of the original color is **FFD9CF**, and **956E66** is the 20% darker color. If you saturate the color by 10%, you get **CC9185**, and if you desaturate by 10%, it is **CCB3AD**.

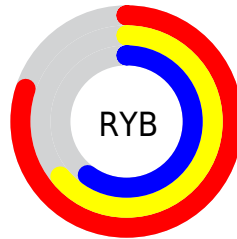
# Distribution



Red (80%)

Green (64%)

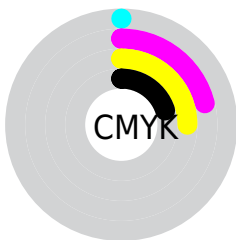
Blue (60%)



Red (80%)

Yellow (64%)

Blue (60%)

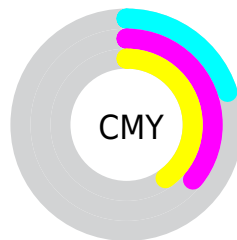


Cyan (0%)

Magenta (21%)

Yellow (25%)

Black (20%)



Cyan (20%)

Magenta (36%)

Yellow (40%)

# Brightness & Saturation Gradients

These gradients show how the Hex color CCA299 changes by changing the brightness by 10 percent. The first figure shows a shift by +10% for each color and the second figure -10%.

Similar to the brightness gradients but the following saturation gradients show a change of the Hex color CCA299 by changing the saturation by 10% instead.



 CCA299

 CCA299

FFFFFF

 B0887F

 FFD9CF


 956E66

 FFF5EC

 7B564E

 613E37

 482822

 31130C

 1C0001

 000000

 CCA299

 CCA299

 CC9185

 CCB3AD

 CC8070

 CCC4C2

 CC705C

 CCD4D6

 CC5F47

 CCE5EB

 CC4E33

 CCF6FF

 CC3D1F

 CCFFFF

 CC2C0A

 CC2400

# Harmonies

## Analogous

The Analogous color harmony consists of three colors that are next to each other on the color wheel.



CCA0A8



CCA299



C3A68F

# Triad

The Triadic color harmony groups three colors that are evenly spaced from another and form a triangle on the color wheel.



CCA299



91B49E



9EACCB

# Complementary

The Complementary color scheme is a pair of colors which are on the opposite of each other on the color wheel.



CCA299



99C3CC

# Split Complementary

Split-complementary colors differ from the complementary color scheme. The scheme consists of three colors, the original color and two neighbors of the complement color.



8BB1C8



CCA299



84B5AF

# Square

The Square scheme is like the rectangle color scheme, but the four colors are evenly spaced on the color wheel.



CCA299



A2B092



81B4BE



B3A6C5

# Rectangle

The Rectangle color scheme consists of four colors that form a rectangle on the color wheel.



CCA299



BAAA8C



81B4BE



97ADCB

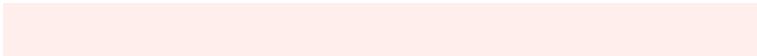


# Sweetspot

The Sweet Spot groups the original color and five complimentary colors.



CCA299



FFEEEB



CC99C3



807573



000000



808080



# Same Dimension

The Same Dimension uses a secret algorithm to generate beautiful new colors.



CCA299



FFC0B3



CCBB99



665E5C



A61D00



260700

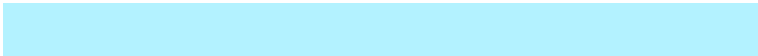


# Inverse Universe

The Inverse Universe completely reimagines the original color for something new.



99C3CC



B3F2FF



99AACC



5C6466



0088A6

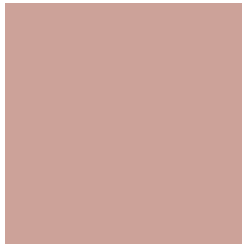


001F26



# Previews

## White Background



This preview shows how the Hex color CCA299 looks on a white background.

## Color Contrast Check

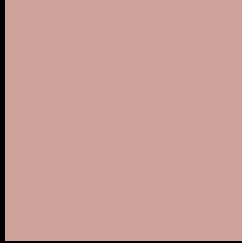
Large Text (above 18pt) WCAG AA × Fail

Any Text WCAG AA × Fail

Large Text (above 18pt) WCAG AAA × Fail

Any Text WCAG AAA × Fail

# Black Background



This preview shows how the Hex color CCA299 looks on a black background.

## Color Contrast Check

Large Text (above 18pt) WCAG AA ✓ Pass

Any Text WCAG AA ✓ Pass

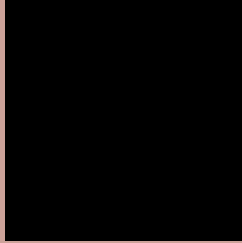
Large Text (above 18pt) WCAG AAA ✓ Pass

Any Text WCAG AAA ✓ Pass

If you want to check with other color combinations, try the [Color Contrast Checker](#).



## Hex CCA299 Background



This preview shows how black text looks on a background with the Hex color CCA299.

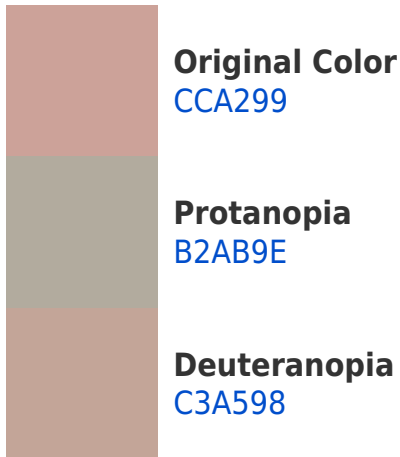


This preview shows how white text looks on a background with the Hex color CCA299.

# Color Blindness Simulation

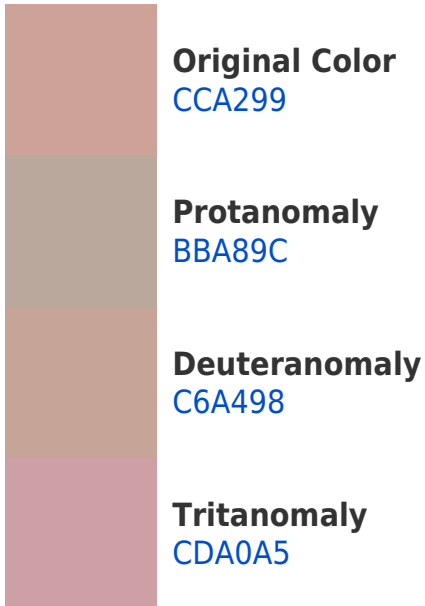
Color vision deficiency is a very complex topic, and I could not describe the different causes any better than Wikipedia does, so if you want to learn more, you should check out their [article about color blindness](#).

## Dichromacy

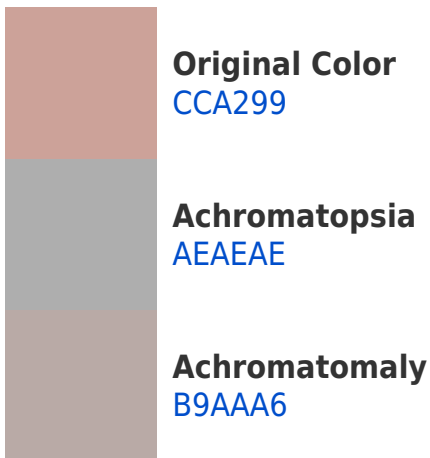




# Trichromacy



# Monochromacy



# CSS Examples

## Text

The CSS property to change the color of the text to Hex CCA299 is called "color". The color property can be set on classes, ids or directly on the HTML element.

This example shows how text in the color #CCA299 looks like.

```
.text, #text, p{  
    color:#CCA299  
}
```

If you want to add a text shadow in that color use the text-shadow property, you can generate a text shadow directly with our [CSS Text Shadow Generator](#).

Here you see how black text with a 4 pixel #CCA299 colored shadow looks like.

```
.shadow{ text-shadow: 4px 4px 2px #CCA299
}
```

## Border

The CSS property to change the border of an element to Hex CCA299 is called "border". The border property can be set on classes, ids or directly on the HTML element.

This example shows the color as border, it can be applied via the CSS property "border" or "border-color".

```
.border, #border, table{ border:4px solid
#CCA299 }
```

If only the border color should be changed use the property `border-color`.

```
.border{ border-color:#CCA299 }
```

If you want to add a box shadow in that color use:

Here you see how a box with a 4 pixel #CCA299 colored shadow looks like.

```
.boxshadow{ -moz-box-shadow:4px 4px 4px  
4px #CCA299; -webkit-box-shadow:4px 4px  
4px 4px #CCA299; box-shadow:4px 4px 4px  
4px #CCA299 }
```

# Background

The CSS property to change the background color of an element to Hex CCA299 is called "background". The background property can be set on classes, ids or directly on the HTML element.

```
.background, #background, body{  
background:#CCA299 }
```

If only the background color should be changed can be used:

```
.background{ background-color:#CCA299 }
```

This example shows the color as background, it is applied via the CSS property "background".

To optimize and compress your CSS code, you can use our [online CSS compressor and optimizer](#) based on csstidy. If you want to create a linear or radial gradient as background or border, check our [CSS Gradient Generator](#).



Hey! You found this booklet interesting? Support Converting Colors with the new Membership Option!

The pro membership hides all ads, plus gives you double the colors in the color bucket, and more awesome pro features!

**[Learn more, Memberships starting at \\$2.50/m!](#)**

**Follow me  
on Twitter!**

@ConvertingColor