

# Converting Colors

Hex(CCABB2)

Have a look what the booklet for  
Hex(CCABB2) contains.

<b>Hex(CCABB2)</b> .....	3
<i><b>Conversions</b></i> .....	4
<i><b>Details</b></i> .....	6
<i><b>Harmonies</b></i> .....	11
<i><b>Previews</b></i> .....	23
<i><b>Color Blindness Simulation</b></i> .....	26
<i><b>CSS Examples</b></i> .....	29

# **Color**

**Hex(CCABB2)**

# Conversions

## Conversions Part 1

<b>Format</b>	<b>Color</b>
Hex	CCABB2
RGB	204, 171, 178
RGB Percent	80%, 67%, 70%
CMY	0.2000, 0.3294, 0.3020
CMYK	0.00, 0.16, 0.13, 0.20
HSL	347°, 24%, 74%
HSV	347°, 16%, 80%
XYZ	47.5006, 45.1775, 48.3361
YIQ	181.6650, 17.4210, 9.1730

# Conversions

## Conversions Part 2

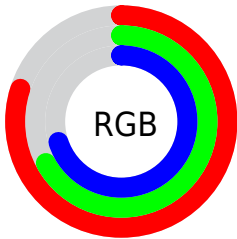
Format	Color
<a href="#">RYB</a>	<a href="#">204, 171, 178</a>
Decimal	<a href="#">13413298</a>
CIELab	<a href="#">73.01, 13.13, 0.89</a>
CIELCh	<a href="#">73, 13.159, 3.895</a>
Yxy	<a href="#">45.1775, 0.3368, 0.3204</a>
Android (android.graphics.Color)	<a href="#">4291603378</a> ( <a href="#">0xFFCCABB2</a> )
YUV	<a href="#">181.6650, -1.8068, 19.5878</a>
Hunter-Lab	<a href="#">67.2142, 8.5219, 4.4125</a>

# Details

The Hex color **CCABB2** is a light color, and the websafe version is hex **CC9999**. A complement of this color would be **ABCCC5**, and the grayscale version is **B6B6B6**.

A 20% lighter version of the original color is **FFE2EA**, and **96777D** is the 20% darker color. If you saturate the color by 10%, you get **CC97A2**, and if you desaturate by 10%, it is **CCBFC2**.

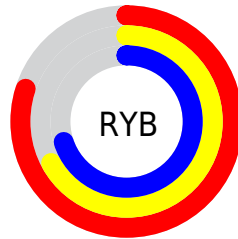
# Distribution



Red (80%)

Green (67%)

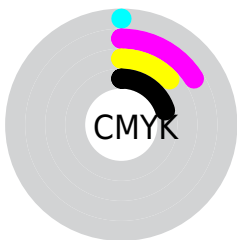
Blue (70%)



Red (80%)

Yellow (67%)

Blue (70%)

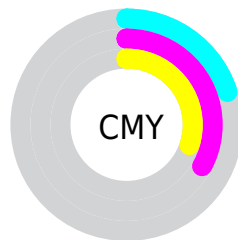


Cyan (0%)

Magenta (16%)

Yellow (13%)

Black (20%)



Cyan (20%)

Magenta (33%)

Yellow (30%)

# Brightness & Saturation Gradients

These gradients show how the Hex color CCABB2 changes by changing the brightness by 10 percent. The first figure shows a shift by +10% for each color and the second figure -10%.

Similar to the brightness gradients but the following saturation gradients show a change of the Hex color CCABB2 by changing the saturation by 10% instead.





CCABB2



CCABB2

FFFFFF



B09097



FFE2EA



96777D



7B5E65



62464D



4A3036



331A21



1F0109



000000



CCABB2



CCABB2

 CC97A2

 CCBFC2

 CC8292

 CCD4D2

 CC6E82

 CCE8E2

 CC5972

 CCFDF2

 CC4562

 CCFFFF

 CC3152

 CC1C41

 CC0831

 CC002B

# Harmonies

## Analogous

The Analogous color harmony consists of three colors that are next to each other on the color wheel.



C5ACBE



CCABB2



CDACA6

# Triad

The Triadic color harmony groups three colors that are evenly spaced from another and form a triangle on the color wheel.



CCABB2



AEB79F



9BB7C8

# Complementary

The Complementary color scheme is a pair of colors which are on the opposite of each other on the color wheel.



CCABB2



ABCCC5

# Split Complementary

Split-complementary colors differ from the complementary color scheme. The scheme consists of three colors, the original color and two neighbors of the complement color.



95BAC0



CCABB2



A0B9A8

# Square

The Square scheme is like the rectangle color scheme, but the four colors are evenly spaced on the color wheel.



CCABB2



BBB39B



97BAB4



A8B4CB

# Rectangle

The Rectangle color scheme consists of four colors that form a rectangle on the color wheel.



CCABB2



C9AEA0



97BAB4



98B8C6



# Sweetspot

The Sweet Spot groups the original color and five complimentary colors.



CCABB2



FFF2F5



C5ABCC



807879



000000



808080



# Same Dimension

The Same Dimension uses a secret algorithm to generate beautiful new colors.



CCABB2



FFCFD9



CCB4AB



665C5E



A60023



260008



# Inverse Universe

The Inverse Universe completely reimagines the original color for something new.



CCABB2



FFCFD9



ABC3CC



665C5E



A60023

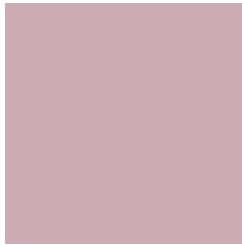


260008



# Previews

## White Background



This preview shows how the Hex color CCABB2 looks on a white background.

## Color Contrast Check

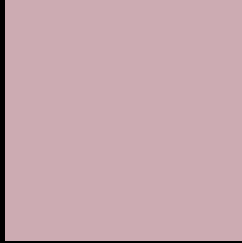
Large Text (above 18pt) WCAG AA × Fail

Any Text WCAG AA × Fail

Large Text (above 18pt) WCAG AAA × Fail

Any Text WCAG AAA × Fail

# Black Background



This preview shows how the Hex color CCABB2 looks on a black background.

## Color Contrast Check

Large Text (above 18pt) WCAG AA ✓ Pass

Any Text WCAG AA ✓ Pass

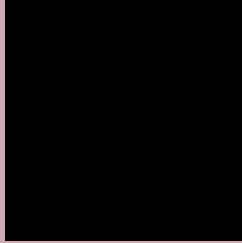
Large Text (above 18pt) WCAG AAA ✓ Pass

Any Text WCAG AAA ✓ Pass

If you want to check with other color combinations, try the [Color Contrast Checker](#).



## Hex CCABB2 Background



This preview shows how black text looks on a background with the Hex color CCABB2.



This preview shows how white text looks on a background with the Hex color CCABB2.

# Color Blindness Simulation

Color vision deficiency is a very complex topic, and I could not describe the different causes any better than Wikipedia does, so if you want to learn more, you should check out their [article about color blindness](#).

## Dichromacy



**Original Color**  
CCABB2

**Protanopia**  
B6B2B6

**Deuteranopia**  
C5AEB2



# Trichromacy



**Original Color**  
CCABB2

**Protanomaly**  
BEAFB5

**Deuteranomaly**  
C8ADB2

**Tritanomaly**  
CDAAB5

# Monochromacy



**Original Color**  
CCABB2

**Achromatopsia**  
B6B6B6

**Achromatomaly**  
BEB2B5

# CSS Examples

## Text

The CSS property to change the color of the text to Hex CCABB2 is called "color". The color property can be set on classes, ids or directly on the HTML element.

This example shows how text in the color #CCABB2 looks like.

```
.text, #text, p{  
    color:#CCABB2  
}
```

If you want to add a text shadow in that color use the text-shadow property, you can generate a text shadow directly with our [CSS Text Shadow Generator](#).

Here you see how black text with a 4 pixel #CCABB2 colored shadow looks like.

```
.shadow{ text-shadow: 4px 4px 2px #CCABB2
}
```

## Border

The CSS property to change the border of an element to Hex CCABB2 is called "border". The border property can be set on classes, ids or directly on the HTML element.

This example shows the color as border, it can be applied via the CSS property "border" or "border-color".

```
.border, #border, table{ border:4px solid
#CCABB2 }
```

If only the border color should be changed use the property `border-color`.

```
.border{ border-color:#CCABB2 }
```

If you want to add a box shadow in that color use:

Here you see how a box with a 4 pixel #CCABB2 colored shadow looks like.

```
.boxshadow{ -moz-box-shadow:4px 4px 4px  
4px #CCABB2; -webkit-box-shadow:4px 4px  
4px 4px #CCABB2; box-shadow:4px 4px 4px  
4px #CCABB2 }
```

# Background

The CSS property to change the background color of an element to Hex CCABB2 is called "background". The background property can be set on classes, ids or directly on the HTML element.

```
.background, #background, body{  
background:#CCABB2 }
```

If only the background color should be changed can be used:

```
.background{ background-color:#CCABB2 }
```

This example shows the color as background, it is applied via the CSS property "background".

To optimize and compress your CSS code, you can use our [online CSS compressor and optimizer](#) based on csstidy. If you want to create a linear or radial gradient as background or border, check our [CSS Gradient Generator](#).



Hey! You found this booklet interesting? Support Converting Colors with the new Membership Option!

The pro membership hides all ads, plus gives you double the colors in the color bucket, and more awesome pro features!

**[Learn more, Memberships starting at \\$2.50/m!](#)**

**Follow me  
on Twitter!**

@ConvertingColor