

Converting Colors

Hex(CCADB5)

Have a look what the booklet for
Hex(CCADB5) contains.

Hex(CCADB5)	3
<i>Conversions</i>	4
<i>Details</i>	6
<i>Harmonies</i>	11
<i>Previews</i>	23
<i>Color Blindness Simulation</i>	26
<i>CSS Examples</i>	29

Color

Hex(CCADB5)

Conversions

Conversions Part 1

Format	Color
Hex	CCADB5
RGB	204, 173, 181
RGB Percent	80%, 68%, 71%
CMY	0.2000, 0.3216, 0.2902
CMYK	0.00, 0.15, 0.11, 0.20
HSL	345°, 23%, 74%
HSV	345°, 15%, 80%
XYZ	48.1859, 46.0607, 50.0670
YIQ	183.1810, 15.9080, 9.0600

Conversions

Conversions Part 2

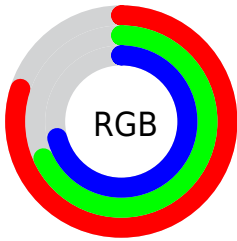
Format	Color
R _Y B	204, 173, 181
Decimal	13413813
CIE Lab	73.58, 12.54, 0.09
CIE LCh	74, 12.544, 0.400
Yxy	46.0607, 0.3339, 0.3192
Android (android.graphics.Color)	4291603893 (0xFFCCADB5)
YUV	183.1810, -1.0752, 18.2583
Hunter-Lab	67.8680, 7.9649, 3.7687

Details

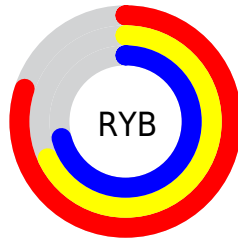
The Hex color **CCADB5** is a light color, and the websafe version is hex **CC9999**. A complement of this color would be **ADCCC4**, and the grayscale version is **B7B7B7**.

A 20% lighter version of the original color is **FFE4ED**, and **967980** is the 20% darker color. If you saturate the color by 10%, you get **CC99A6**, and if you desaturate by 10%, it is **CCC1C4**.

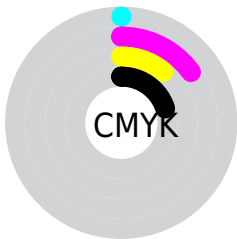
Distribution



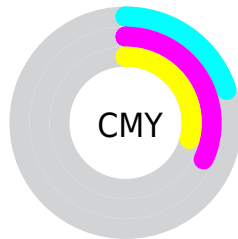
- Red (80%)
- Green (68%)
- Blue (71%)



- Red (80%)
- Yellow (68%)
- Blue (71%)



- Cyan (0%)
- Magenta (15%)
- Yellow (11%)
- Black (20%)



- Cyan (20%)
- Magenta (32%)
- Yellow (29%)

Brightness & Saturation Gradients

These gradients show how the Hex color CCADB5 changes by changing the brightness by 10 percent. The first figure shows a shift by +10% for each color and the second figure -10%.

Similar to the brightness gradients but the following saturation gradients show a change of the Hex color CCADB5 by changing the saturation by 10% instead.



CCADB5



CCADB5

FFFFFF



B0929A



FFE4ED



967980



7C6067



62484F



4A3138



331C23



1F030D



000000



CCADB5



CCADB5

 CC99A6

 CCC1C4

 CC8497

 CCD6D3

 CC7088

 CCEAE2

 CC5B78

 CCFFF2

 CC4769

 CCFFFF

 CC335A

 CC1E4B

 CC0A3C

 CC0035

Harmonies

Analogous

The Analogous color harmony consists of three colors that are next to each other on the color wheel.



C4AFC0



CCADB5



CDAEAA

Triad

The Triadic color harmony groups three colors that are evenly spaced from another and form a triangle on the color wheel.



CCADB5



B1B8A1



9DB9C8

Complementary

The Complementary color scheme is a pair of colors which are on the opposite of each other on the color wheel.



CCADB5



ADCCC4

Split Complementary

Split-complementary colors differ from the complementary color scheme. The scheme consists of three colors, the original color and two neighbors of the complement color.



98BBC0



CCADB5



A4BAA9

Square

The Square scheme is like the rectangle color scheme, but the four colors are evenly spaced on the color wheel.



CCADB5



BEB49E



9BBCB4



A9B6CB

Rectangle

The Rectangle color scheme consists of four colors that form a rectangle on the color wheel.



CCADB5



CBAFA3



9BBCB4



9ABAC6

Sweetspot

The Sweet Spot groups the original color and five complimentary colors.



CCADB5



FFF2F6



C4ADCC



80787A



000000



808080

Same Dimension

The Same Dimension uses a secret algorithm to generate beautiful new colors.



CCADB5



FFD1DD



CCB4AD



665C5E



A6002B



26000A

Inverse Universe

The Inverse Universe completely reimagines the original color for something new.



CCADB5



FFD1DD



ADC5CC



665C5E



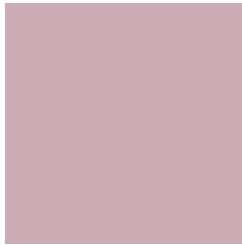
A6002B



26000A

Previews

White Background



This preview shows how the Hex color CCADB5 looks on a white background.

Color Contrast Check

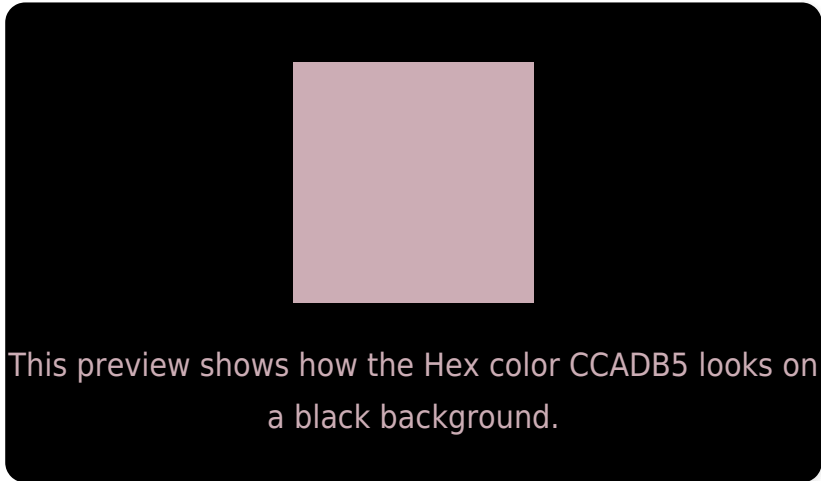
Large Text (above 18pt) WCAG AA × Fail

Any Text WCAG AA × Fail

Large Text (above 18pt) WCAG AAA × Fail

Any Text WCAG AAA × Fail

Black Background



Color Contrast Check

Large Text (above 18pt) WCAG AA ✓ Pass

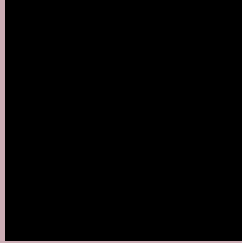
Any Text WCAG AA ✓ Pass

Large Text (above 18pt) WCAG AAA ✓ Pass

Any Text WCAG AAA ✓ Pass

If you want to check with other color combinations, try the [Color Contrast Checker](#).

Hex CCADB5 Background



This preview shows how black text looks on a background with the Hex color CCADB5.



This preview shows how white text looks on a background with the Hex color CCADB5.

Color Blindness Simulation

Color vision deficiency is a very complex topic, and I could not describe the different causes any better than Wikipedia does, so if you want to learn more, you should check out their [article about color blindness](#).

Dichromacy



Original Color
CCADB5

Protanopia
B7B4B9

Deuteranopia
C6AFB5

Trichromacy



Original Color
CCADB5

Protanomaly
BFB1B8

Deuteranomaly
C8AEB5

Tritanomaly
CDACB8

Monochromacy



Original Color
CCADB5

Achromatopsia
B7B7B7

Achromatomaly
BFB3B6

CSS Examples

Text

The CSS property to change the color of the text to Hex CCADB5 is called "color". The color property can be set on classes, ids or directly on the HTML element.

This example shows how text in the color #CCADB5 looks like.

```
.text, #text, p{  
    color:#CCADB5  
}
```

If you want to add a text shadow in that color use the text-shadow property, you can generate a text shadow directly with our [CSS Text Shadow Generator](#).

Here you see how black text with a 4 pixel #CCADB5 colored shadow looks like.

```
.shadow{ text-shadow: 4px 4px 2px #CCADB5
}
```

Border

The CSS property to change the border of an element to Hex CCADB5 is called "border". The border property can be set on classes, ids or directly on the HTML element.

This example shows the color as border, it can be applied via the CSS property "border" or "border-color".

```
.border, #border, table{ border:4px solid
#CCADB5 }
```

If only the border color should be changed use the property `border-color`.

```
.border{ border-color:#CCADB5 }
```

If you want to add a box shadow in that color use:

Here you see how a box with a 4 pixel #CCADB5 colored shadow looks like.

```
.boxshadow{ -moz-box-shadow:4px 4px 4px  
4px #CCADB5; -webkit-box-shadow:4px 4px  
4px 4px #CCADB5; box-shadow:4px 4px 4px  
4px #CCADB5 }
```

Background

The CSS property to change the background color of an element to Hex CCADB5 is called "background". The background property can be set on classes, ids or directly on the HTML element.

```
.background, #background, body{  
background:#CCADB5 }
```

If only the background color should be changed can be used:

```
.background{ background-color:#CCADB5 }
```

This example shows the color as background, it is applied via the CSS property "background".

To optimize and compress your CSS code, you can use our [online CSS compressor and optimizer](#) based on csstidy. If you want to create a linear or radial gradient as background or border, check our [CSS Gradient Generator](#).

Hey! You found this booklet interesting? Support Converting Colors with the new Membership Option!

The pro membership hides all ads, plus gives you double the colors in the color bucket, and more awesome pro features!

[Learn more, Memberships starting at \\$2.50/m!](#)

**Follow me
on Twitter!**

@ConvertingColor