

Converting Colors

Hex(CCB5BC)

Have a look what the booklet for
Hex(CCB5BC) contains.

| | |
|--|----|
| Hex(CCB5BC) | 3 |
| <i>Conversions</i> | 4 |
| <i>Details</i> | 6 |
| <i>Harmonies</i> | 11 |
| <i>Previews</i> | 23 |
| <i>Color Blindness Simulation</i> | 26 |
| <i>CSS Examples</i> | 29 |

Color

Hex(CCB5BC)

Conversions

Conversions Part 1

| Format | Color |
|-------------|---------------------------|
| Hex | CCB5BC |
| RGB | 204, 181, 188 |
| RGB Percent | 80%, 71%, 74% |
| CMY | 0.2000, 0.2902, 0.2627 |
| CMYK | 0.00, 0.11, 0.08, 0.20 |
| HSL | 342°, 18%, 75% |
| HSV | 342°, 11%, 80% |
| XYZ | 50.5028, 49.5160, 54.4727 |
| YIQ | 188.6750, 11.4610, 7.0530 |

Conversions

Conversions Part 2

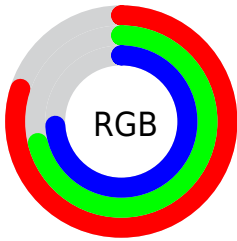
| Format | Color |
|-------------------------------------|--|
| RYB | 204, 181, 188 |
| Decimal | 13415868 |
| CIELab | 75.77, 9.41, -0.54 |
| CIELCh | 76, 9.426, 356.690 |
| Yxy | 49.5160, 0.3269, 0.3205 |
| Android (android.graphics.Color) | 4291605948 (0xFFCCB5BC) |
| YUV | 188.6750, -0.3328, 13.4400 |
| Hunter-Lab | 70.3676, 4.9662, 3.3599 |

Details

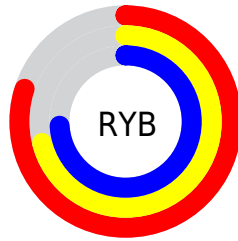
The Hex color **CCB5BC** is a light color, and the websafe version is hex **CCCCCC**. A complement of this color would be **B5CCC5**, and the grayscale version is **BDBDBD**.

A 20% lighter version of the original color is **FFEDF4**, and **968087** is the 20% darker color. If you saturate the color by 10%, you get **CCA1AE**, and if you desaturate by 10%, it is **CCC9CA**.

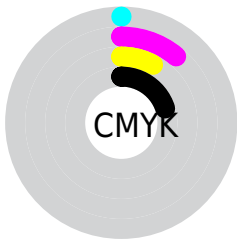
Distribution



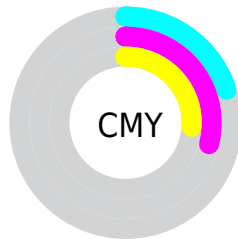
- Red (80%)
- Green (71%)
- Blue (74%)



- Red (80%)
- Yellow (71%)
- Blue (74%)



- Cyan (0%)
- Magenta (11%)
- Yellow (8%)
- Black (20%)



- Cyan (20%)
- Magenta (29%)
- Yellow (26%)

Brightness & Saturation Gradients

These gradients show how the Hex color CCB5BC changes by changing the brightness by 10 percent. The first figure shows a shift by +10% for each color and the second figure -10%.

Similar to the brightness gradients but the following saturation gradients show a change of the Hex color CCB5BC by changing the saturation by 10% instead.



CCB5BC



CCB5BC

FFFFFF



B09AA1



FFEDF4



968087



7C676E



634F55



4B383E



342328



1F0D14



000000



CCB5BC



CCB5BC

■ CCA1AE

■ CCC9CA

■ CC8CA0

■ CCDED8

■ CC7891

■ CCF2E7

■ CC6383

■ CCFFF5

■ CC4F75

■ CCFFFF

■ CC3B67

■ CC2659

■ CC124A

■ CC003E

Harmonies

Analogous

The Analogous color harmony consists of three colors that are next to each other on the color wheel.



C5B6C4



CCB5BC



CEB5B3

Triad

The Triadic color harmony groups three colors that are evenly spaced from another and form a triangle on the color wheel.



CCB5BC



B9BDAB



A8BEC9

Complementary

The Complementary color scheme is a pair of colors which are on the opposite of each other on the color wheel.



CCB5BC



B5CCC5

Split Complementary

Split-complementary colors differ from the complementary color scheme. The scheme consists of three colors, the original color and two neighbors of the complement color.



A5C0C2



CCB5BC



AFBFB1

Square

The Square scheme is like the rectangle color scheme, but the four colors are evenly spaced on the color wheel.



CCB5BC



C3BAAA



A8C0B9



B1BCCC

Rectangle

The Rectangle color scheme consists of four colors that form a rectangle on the color wheel.



CCB5BC



CCB6AE



A8C0B9



A7BFC7

Sweetspot

The Sweet Spot groups the original color and five complimentary colors.



CCB5BC



FFF7FA



C5B5CC



807A7C



000000



808080

Same Dimension

The Same Dimension uses a secret algorithm to generate beautiful new colors.



CCB5BC



FFDBE6



CCB9B5



665C5F



A60032



26000C

Inverse Universe

The Inverse Universe completely reimagines the original color for something new.



CCB5BC



FFDBE6



B5C8CC



665C5F



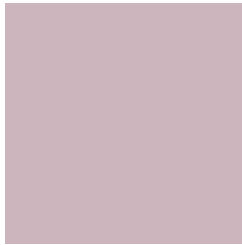
A60032



26000C

Previews

White Background



This preview shows how the Hex color CCB5BC looks on a white background.

Color Contrast Check

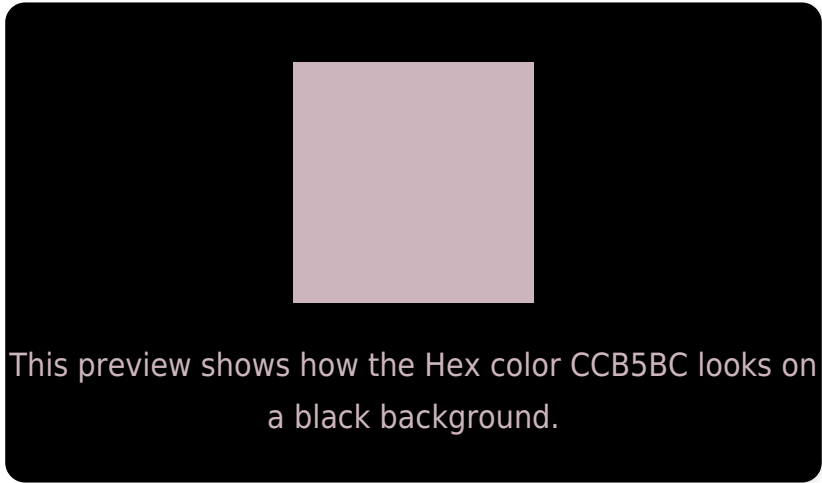
Large Text (above 18pt) WCAG AA × Fail

Any Text WCAG AA × Fail

Large Text (above 18pt) WCAG AAA × Fail

Any Text WCAG AAA × Fail

Black Background



Color Contrast Check

Large Text (above 18pt) WCAG AA ✓ Pass

Any Text WCAG AA ✓ Pass

Large Text (above 18pt) WCAG AAA ✓ Pass

Any Text WCAG AAA ✓ Pass

If you want to check with other color combinations, try the [Color Contrast Checker](#).

Hex CCB5BC Background



This preview shows how black text looks on a background with the Hex color CCB5BC.



This preview shows how white text looks on a background with the Hex color CCB5BC.

Color Blindness Simulation

Color vision deficiency is a very complex topic, and I could not describe the different causes any better than Wikipedia does, so if you want to learn more, you should check out their [article about color blindness](#).

Dichromacy





Tritanopia
CDB4C2

Trichromacy



Original Color
CCB5BC

Protanomaly
C2B8BE

Deuteranomaly
CCB5BC

Tritanomaly
CDB4C0

Monochromacy



Original Color
CCB5BC

Achromatopsia
BDBDBD

Achromatomaly
C2BABD

CSS Examples

Text

The CSS property to change the color of the text to Hex CCB5BC is called "color". The color property can be set on classes, ids or directly on the HTML element.

This example shows how text in the color #CCB5BC looks like.

```
.text, #text, p{  
    color:#CCB5BC  
}
```

If you want to add a text shadow in that color use the text-shadow property, you can generate a text shadow directly with our [CSS Text Shadow Generator](#).

Here you see how black text with a 4 pixel #CCB5BC colored shadow looks like.

```
.shadow{ text-shadow: 4px 4px 2px #CCB5BC
}
```

Border

The CSS property to change the border of an element to Hex CCB5BC is called "border". The border property can be set on classes, ids or directly on the HTML element.

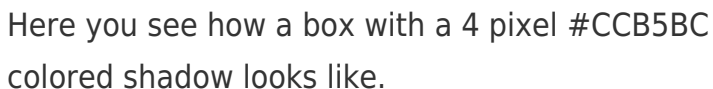
This example shows the color as border, it can be applied via the CSS property "border" or "border-color".

```
.border, #border, table{ border:4px solid
#CCB5BC }
```

If only the border color should be changed use the property `border-color`.

```
.border{ border-color:#CCB5BC }
```

If you want to add a box shadow in that color use:



Here you see how a box with a 4 pixel #CCB5BC colored shadow looks like.

```
.boxshadow{ -moz-box-shadow:4px 4px 4px  
4px #CCB5BC; -webkit-box-shadow:4px 4px  
4px 4px #CCB5BC; box-shadow:4px 4px 4px  
4px #CCB5BC }
```

Background

The CSS property to change the background color of an element to Hex CCB5BC is called "background". The background property can be set on classes, ids or directly on the HTML element.

```
.background, #background, body{  
background:#CCB5BC }
```

If only the background color should be changed can be used:

```
.background{ background-color:#CCB5BC }
```

This example shows the color as background, it is applied via the CSS property "background".

To optimize and compress your CSS code, you can use our [online CSS compressor and optimizer](#) based on csstidy. If you want to create a linear or radial gradient as background or border, check our [CSS Gradient Generator](#).

Hey! You found this booklet interesting? Support Converting Colors with the new Membership Option!

The pro membership hides all ads, plus gives you double the colors in the color bucket, and more awesome pro features!

[Learn more, Memberships starting at \\$2.50/m!](#)

**Follow me
on Twitter!**

@ConvertingColor