

Converting Colors

Hex(CCB6B6)

Have a look what the booklet for
Hex(CCB6B6) contains.

Hex(CCB6B6)	3
<i>Conversions</i>	4
<i>Details</i>	6
<i>Harmonies</i>	11
<i>Previews</i>	23
<i>Color Blindness Simulation</i>	26
<i>CSS Examples</i>	29

Color

Hex(CCB6B6)

Conversions

Conversions Part 1

Format	Color
Hex	CCB6B6
RGB	204, 182, 182
RGB Percent	80%, 71%, 71%
CMY	0.2000, 0.2863, 0.2863
CMYK	0.00, 0.11, 0.11, 0.20
HSL	0°, 18%, 76%
HSV	0°, 11%, 80%
XYZ	50.0733, 49.6707, 51.2042
YIQ	188.5780, 13.1120, 4.6640

Conversions

Conversions Part 2

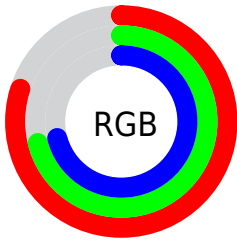
Format	Color
RYB	204, 182, 182
Decimal	13416118
CIELab	75.87, 7.85, 2.86
CIELCh	76, 8.353, 20.035
Yxy	49.6707, 0.3317, 0.3291
Android (android.graphics.Color)	4291606198 (0xFFCCB6B6)
YUV	188.5780, -3.2430, 13.5251
Hunter-Lab	70.4774, 3.4864, 6.2580

Details

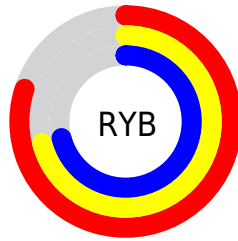
The Hex color **CCB6B6** is a light color, and the websafe version is hex **CCCCCC**. A complement of this color would be **B6CCCC**, and the grayscale version is **BDBDBD**.

A 20% lighter version of the original color is **FFEEEE**, and **968181** is the 20% darker color. If you saturate the color by 10%, you get **CCA2A2**, and if you desaturate by 10%, it is **CCCACA**.

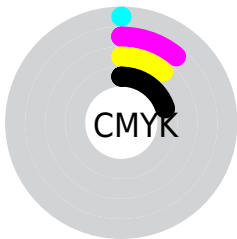
Distribution



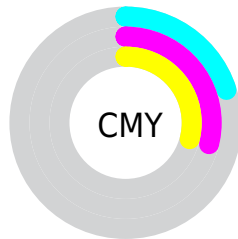
- Red (80%)
- Green (71%)
- Blue (71%)



- Red (80%)
- Yellow (71%)
- Blue (71%)



- Cyan (0%)
- Magenta (11%)
- Yellow (11%)
- Black (20%)



- Cyan (20%)
- Magenta (29%)
- Yellow (29%)

Brightness & Saturation Gradients

These gradients show how the Hex color CCB6B6 changes by changing the brightness by 10 percent. The first figure shows a shift by +10% for each color and the second figure -10%.

Similar to the brightness gradients but the following saturation gradients show a change of the Hex color CCB6B6 by changing the saturation by 10% instead.

■ CCB6B6

■ CCB6B6

FFFFFF

■ B09B9B

■ FFEEEE

■ 968181

■ 7C6868

■ 635050

■ 4B3939

■ 342324

■ 1F0E0E

■ 000000

■ CCB6B6

■ CCB6B6

 CCA2A2

 CCCACA

 CC8D8D

 CCDFDF

 CC7979

 CCF3F3

 CC6464

 CCFFFF

 CC5050

 CC3C3C

 CC2727

 CC1313

 CC0000

Harmonies

Analogous

The Analogous color harmony consists of three colors that are next to each other on the color wheel.



C9B6BE



CCB6B6



CAB7AF

Triad

The Triadic color harmony groups three colors that are evenly spaced from another and form a triangle on the color wheel.



CCB6B6



B3BEB1



B0BCCA

Complementary

The Complementary color scheme is a pair of colors which are on the opposite of each other on the color wheel.



CCB6B6



B6CCCC

Split Complementary

Split-complementary colors differ from the complementary color scheme. The scheme consists of three colors, the original color and two neighbors of the complement color.



AABEC6



CCB6B6



ACC0B8

Square

The Square scheme is like the rectangle color scheme, but the four colors are evenly spaced on the color wheel.



CCB6B6



BCBCAD



A8C0C0



B9BAC9

Rectangle

The Rectangle color scheme consists of four colors that form a rectangle on the color wheel.



CCB6B6



C7B9AD



A8C0C0



AEBDC9

Sweetspot

The Sweet Spot groups the original color and five complimentary colors.



CCB6B6



FFF7F7



CCB6CC



807A7A



000000



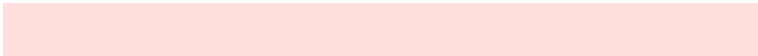
808080

Same Dimension

The Same Dimension uses a secret algorithm to generate beautiful new colors.



CCB6B6



FFDEDE



CCC1B6



665C5C



A60000



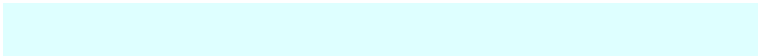
260000

Inverse Universe

The Inverse Universe completely reimagines the original color for something new.



B6CCCC



DEFFFF



B6C1CC



5C6666



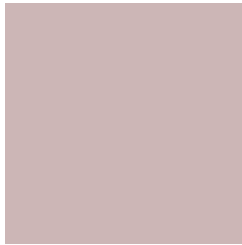
00A6A6



002626

Previews

White Background



This preview shows how the Hex color CCB6B6 looks on a white background.

Color Contrast Check

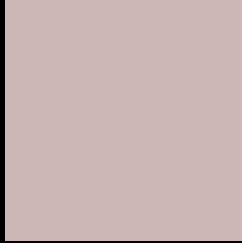
Large Text (above 18pt) WCAG AA × Fail

Any Text WCAG AA × Fail

Large Text (above 18pt) WCAG AAA × Fail

Any Text WCAG AAA × Fail

Black Background



This preview shows how the Hex color CCB6B6 looks on a black background.

Color Contrast Check

Large Text (above 18pt) WCAG AA ✓ Pass

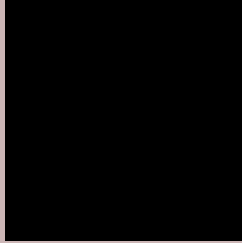
Any Text WCAG AA ✓ Pass

Large Text (above 18pt) WCAG AAA ✓ Pass

Any Text WCAG AAA ✓ Pass

If you want to check with other color combinations, try the [Color Contrast Checker](#).

Hex CCB6B6 Background



This preview shows how black text looks on a background with the Hex color CCB6B6.



This preview shows how white text looks on a background with the Hex color CCB6B6.

Color Blindness Simulation

Color vision deficiency is a very complex topic, and I could not describe the different causes any better than Wikipedia does, so if you want to learn more, you should check out their [article about color blindness](#).

Dichromacy





Tritanopia
CEB4C2

Trichromacy



Original Color
CCB6B6

Protanomaly
C4B9B7

Deuteranomaly
CEB5B6

Tritanomaly
CDB5BE

Monochromacy



Original Color
CCB6B6

Achromatopsia
BDBDBD

Achromatomaly
C2BABA

CSS Examples

Text

The CSS property to change the color of the text to Hex CCB6B6 is called "color". The color property can be set on classes, ids or directly on the HTML element.

This example shows how text in the color #CCB6B6 looks like.

```
.text, #text, p{  
    color:#CCB6B6  
}
```

If you want to add a text shadow in that color use the text-shadow property, you can generate a text shadow directly with our [CSS Text Shadow Generator](#).

Here you see how black text with a 4 pixel #CCB6B6 colored shadow looks like.

```
.shadow{ text-shadow: 4px 4px 2px #CCB6B6
}
```

Border

The CSS property to change the border of an element to Hex CCB6B6 is called "border". The border property can be set on classes, ids or directly on the HTML element.

This example shows the color as border, it can be applied via the CSS property "border" or "border-color".

```
.border, #border, table{ border:4px solid
#CCB6B6 }
```

If only the border color should be changed use the property `border-color`.

```
.border{ border-color:#CCB6B6 }
```

If you want to add a box shadow in that color use:

Here you see how a box with a 4 pixel #CCB6B6 colored shadow looks like.

```
.boxshadow{ -moz-box-shadow:4px 4px 4px  
4px #CCB6B6; -webkit-box-shadow:4px 4px  
4px 4px #CCB6B6; box-shadow:4px 4px 4px  
4px #CCB6B6 }
```

Background

The CSS property to change the background color of an element to Hex CCB6B6 is called "background". The background property can be set on classes, ids or directly on the HTML element.

```
.background, #background, body{  
background:#CCB6B6 }
```

If only the background color should be changed can be used:

```
.background{ background-color:#CCB6B6 }
```

This example shows the color as background, it is applied via the CSS property "background".

To optimize and compress your CSS code, you can use our [online CSS compressor and optimizer](#) based on csstidy. If you want to create a linear or radial gradient as background or border, check our [CSS Gradient Generator](#).

Hey! You found this booklet interesting? Support Converting Colors with the new Membership Option!

The pro membership hides all ads, plus gives you double the colors in the color bucket, and more awesome pro features!

[Learn more, Memberships starting at \\$2.50/m!](#)

**Follow me
on Twitter!**

@ConvertingColor