

# Converting Colors

Hex(CCB6C0)

Have a look what the booklet for  
Hex(CCB6C0) contains.

<b>Hex(CCB6C0)</b> .....	3
<i><b>Conversions</b></i> .....	4
<i><b>Details</b></i> .....	6
<i><b>Harmonies</b></i> .....	11
<i><b>Previews</b></i> .....	23
<i><b>Color Blindness Simulation</b></i> .....	26
<i><b>CSS Examples</b></i> .....	29

# **Color**

**Hex(CCB6C0)**

# Conversions

## Conversions Part 1

<b>Format</b>	<b>Color</b>
Hex	CCB6C0
RGB	204, 182, 192
RGB Percent	80%, 71%, 75%
CMY	0.2000, 0.2863, 0.2471
CMYK	0.00, 0.11, 0.06, 0.20
HSL	333°, 18%, 76%
HSV	333°, 11%, 80%
XYZ	51.1442, 50.0990, 56.8437
YIQ	189.7180, 9.9020, 7.7740

# Conversions

## Conversions Part 2

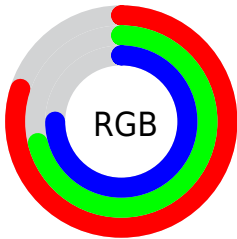
Format	Color
<a href="#">RYB</a>	<a href="#">204, 182, 192</a>
Decimal	<a href="#">13416128</a>
CIELab	<a href="#">76.13, 9.57, -2.20</a>
CIELCh	<a href="#">76, 9.820, 347.075</a>
Yxy	<a href="#">50.0990, 0.3235, 0.3169</a>
Android (android.graphics.Color)	<a href="#">4291606208 (0xFFCCB6C0)</a>
YUV	<a href="#">189.7180, 1.1250, 12.5253</a>
Hunter-Lab	<a href="#">70.7807, 5.1131, 1.9309</a>

# Details

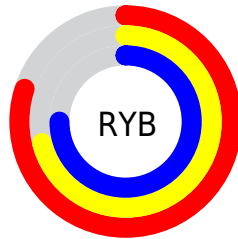
The Hex color **CCB6C0** is a light color, and the websafe version is hex **CCCCCC**. A complement of this color would be **B6CCC2**, and the grayscale version is **BEBEBE**.

A 20% lighter version of the original color is **FFEEF8**, and **96818B** is the 20% darker color. If you saturate the color by 10%, you get **CCA2B5**, and if you desaturate by 10%, it is **CCCACB**.

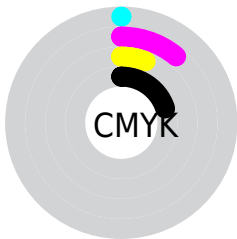
# Distribution



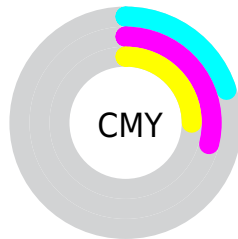
- Red (80%)
- Green (71%)
- Blue (75%)



- Red (80%)
- Yellow (71%)
- Blue (75%)



- Cyan (0%)
- Magenta (11%)
- Yellow (6%)
- Black (20%)



- Cyan (20%)
- Magenta (29%)
- Yellow (25%)

# Brightness & Saturation Gradients

These gradients show how the Hex color CCB6C0 changes by changing the brightness by 10 percent. The first figure shows a shift by +10% for each color and the second figure -10%.

Similar to the brightness gradients but the following saturation gradients show a change of the Hex color CCB6C0 by changing the saturation by 10% instead.



 CCB6C0

 CCB6C0

FFFFFF

 B09BA5

 FFEEF8

 96818B

 7C6871

 635059

 4B3941

 34232B

 1F0E17

 000000

 CCB6C0

 CCB6C0

■ CCA2B5

■ CCCACB

■ CC8DAA

■ CCDFD6

■ CC799F

■ CCF3E1

■ CC6493

■ CCFFED

■ CC5088

■ CCFFF8

■ CC3C7D

■ CCFFFF

■ CC2772

■ CC1367

■ CC005D

# Harmonies

## Analogous

The Analogous color harmony consists of three colors that are next to each other on the color wheel.



C4B8C8



CCB6C0



D0B6B7

# Triad

The Triadic color harmony groups three colors that are evenly spaced from another and form a triangle on the color wheel.



CCB6C0



BEBDAA



A7C0C9

# Complementary

The Complementary color scheme is a pair of colors which are on the opposite of each other on the color wheel.



CCB6C0



B6CCC2

# Split Complementary

Split-complementary colors differ from the complementary color scheme. The scheme consists of three colors, the original color and two neighbors of the complement color.



A6C1C1



CCB6C0



B3BFAF

# Square

The Square scheme is like the rectangle color scheme, but the four colors are evenly spaced on the color wheel.



CCB6C0



C7BAAA



AAC1B7



AEBECD

# Rectangle

The Rectangle color scheme consists of four colors that form a rectangle on the color wheel.



CCB6C0



CFB7B1



AAC1B7



A6C1C6

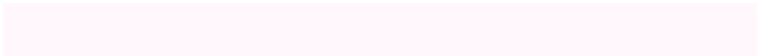


# Sweetspot

The Sweet Spot groups the original color and five complimentary colors.



CCB6C0



FFF7FB



C2B6CC



807A7D



000000



808080



# Same Dimension

The Same Dimension uses a secret algorithm to generate beautiful new colors.



CCB6C0



FFDEED



CCB7B6



665C60



A6004B



260011



# Inverse Universe

The Inverse Universe completely reimagines the original color for something new.



CCB6C0



FFDEED



B6CBCC



665C60



A6004B

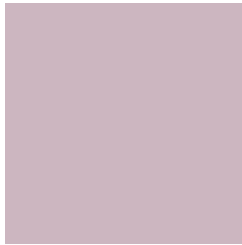


260011



# Previews

## White Background



This preview shows how the Hex color CCB6C0 looks on a white background.

## Color Contrast Check

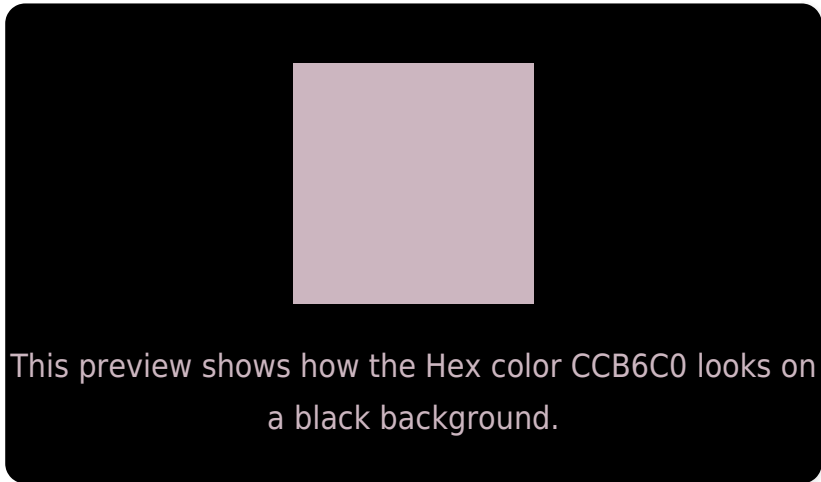
Large Text (above 18pt) WCAG AA × Fail

Any Text WCAG AA × Fail

Large Text (above 18pt) WCAG AAA × Fail

Any Text WCAG AAA × Fail

# Black Background



## Color Contrast Check

Large Text (above 18pt) WCAG AA ✓ Pass

Any Text WCAG AA ✓ Pass

Large Text (above 18pt) WCAG AAA ✓ Pass

Any Text WCAG AAA ✓ Pass

If you want to check with other color combinations, try the [Color Contrast Checker](#).



## Hex CCB6C0 Background



This preview shows how black text looks on a background with the Hex color CCB6C0.

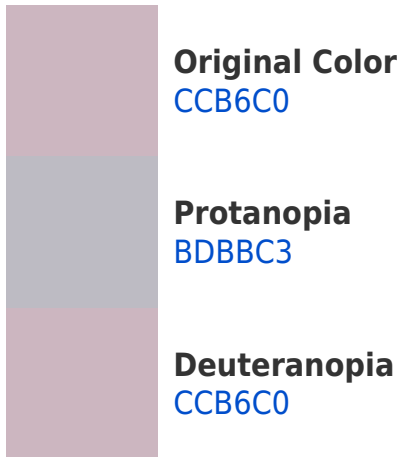


This preview shows how white text looks on a background with the Hex color CCB6C0.

# Color Blindness Simulation

Color vision deficiency is a very complex topic, and I could not describe the different causes any better than Wikipedia does, so if you want to learn more, you should check out their [article about color blindness](#).

## Dichromacy





**Tritanopia**  
CDB5C4

# Trichromacy



**Original Color**  
CCB6C0

**Protanomaly**  
C2B9C2

**Deuteranomaly**  
CCB6C0

**Tritanomaly**  
CDB5C3

# Monochromacy



**Original Color**  
CCB6C0

**Achromatopsia**  
BEBEBE

**Achromatomaly**  
C3BBBF

# CSS Examples

## Text

The CSS property to change the color of the text to Hex CCB6C0 is called "color". The color property can be set on classes, ids or directly on the HTML element.

This example shows how text in the color #CCB6C0 looks like.

```
.text, #text, p{  
    color:#CCB6C0  
}
```

If you want to add a text shadow in that color use the text-shadow property, you can generate a text shadow directly with our [CSS Text Shadow Generator](#).

Here you see how black text with a 4 pixel #CCB6C0 colored shadow looks like.

```
.shadow{ text-shadow: 4px 4px 2px #CCB6C0
}
```

## Border

The CSS property to change the border of an element to Hex CCB6C0 is called "border". The border property can be set on classes, ids or directly on the HTML element.

This example shows the color as border, it can be applied via the CSS property "border" or "border-color".

```
.border, #border, table{ border:4px solid
#CCB6C0 }
```

If only the border color should be changed use the property `border-color`.

```
.border{ border-color:#CCB6C0 }
```

If you want to add a box shadow in that color use:

Here you see how a box with a 4 pixel #CCB6C0 colored shadow looks like.

```
.boxshadow{ -moz-box-shadow:4px 4px 4px  
4px #CCB6C0; -webkit-box-shadow:4px 4px  
4px 4px #CCB6C0; box-shadow:4px 4px 4px  
4px #CCB6C0 }
```

# Background

The CSS property to change the background color of an element to Hex CCB6C0 is called "background". The background property can be set on classes, ids or directly on the HTML element.

```
.background, #background, body{  
background:#CCB6C0 }
```

If only the background color should be changed can be used:

```
.background{ background-color:#CCB6C0 }
```

This example shows the color as background, it is applied via the CSS property "background".

To optimize and compress your CSS code, you can use our [online CSS compressor and optimizer](#) based on csstidy. If you want to create a linear or radial gradient as background or border, check our [CSS Gradient Generator](#).



Hey! You found this booklet interesting? Support Converting Colors with the new Membership Option!

The pro membership hides all ads, plus gives you double the colors in the color bucket, and more awesome pro features!

**[Learn more, Memberships starting at \\$2.50/m!](#)**

**Follow me  
on Twitter!**

@ConvertingColor