

Converting Colors

Hex(CCB8B9)

Have a look what the booklet for
Hex(CCB8B9) contains.

Hex(CCB8B9)	3
<i>Conversions</i>	4
<i>Details</i>	6
<i>Harmonies</i>	11
<i>Previews</i>	23
<i>Color Blindness Simulation</i>	26
<i>CSS Examples</i>	29

Color

Hex(CCB8B9)

Conversions

Conversions Part 1

Format	Color
Hex	CCB8B9
RGB	204, 184, 185
RGB Percent	80%, 72%, 73%
CMY	0.2000, 0.2784, 0.2745
CMYK	0.00, 0.10, 0.09, 0.20
HSL	357°, 16%, 76%
HSV	357°, 10%, 80%
XYZ	50.7993, 50.6211, 52.9924
YIQ	190.0940, 11.5990, 4.5510

Conversions

Conversions Part 2

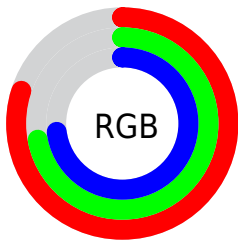
Format	Color
RYB	204, 184, 185
Decimal	13416633
CIELab	76.45, 7.28, 2.08
CIELCh	76, 7.570, 15.915
Yxy	50.6211, 0.3290, 0.3278
Android (android.graphics.Color)	4291606713 (0xFFCCB8B9)
YUV	190.0940, -2.5113, 12.1956
Hunter-Lab	71.1485, 2.9372, 5.6440

Details

The Hex color **CCB8B9** is a light color, and the websafe version is hex **CCCCCC**. A complement of this color would be **B8CCCB**, and the grayscale version is **BEBEBE**.

A 20% lighter version of the original color is **FFF0F1**, and **968384** is the 20% darker color. If you saturate the color by 10%, you get **CCA4A6**, and if you desaturate by 10%, it is **CCCCCC**.

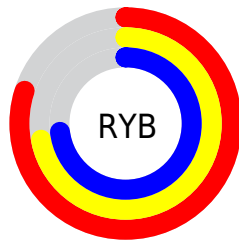
Distribution



Red (80%)

Green (72%)

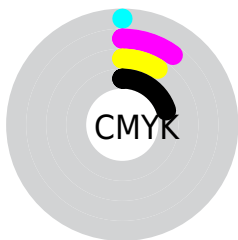
Blue (73%)



Red (80%)

Yellow (72%)

Blue (73%)

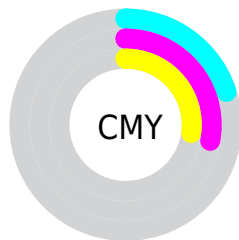


Cyan (0%)

Magenta (10%)

Yellow (9%)

Black (20%)



Cyan (20%)

Magenta (28%)

Yellow (27%)

Brightness & Saturation Gradients

These gradients show how the Hex color CCB8B9 changes by changing the brightness by 10 percent. The first figure shows a shift by +10% for each color and the second figure -10%.

Similar to the brightness gradients but the following saturation gradients show a change of the Hex color CCB8B9 by changing the saturation by 10% instead.

 CCB8B9

 CCB8B9

FFFFFF

 B09D9E

 FFF0F1

 968384

 7C6A6B

 635253

 4B3B3C

 342526

 1F1011

 000000

 CCB8B9

 CCB8B9

 CCA4A6

 CCCCCC

 CC8F92

 CCE1E0

 CC7B7F

 CCF5F3

 CC666B

 CCFFFF

 CC5258

 CC3E45

 CC2931

 CC151E

 CC000B

Harmonies

Analogous

The Analogous color harmony consists of three colors that are next to each other on the color wheel.



C9B8C0



CCB8B9



CBB9B3

Triad

The Triadic color harmony groups three colors that are evenly spaced from another and form a triangle on the color wheel.



CCB8B9



B6FBF3



B2BECA

Complementary

The Complementary color scheme is a pair of colors which are on the opposite of each other on the color wheel.



CCB8B9



B8CCCB

Split Complementary

Split-complementary colors differ from the complementary color scheme. The scheme consists of three colors, the original color and two neighbors of the complement color.



ADC0C6



CCB8B9



AFC1B9

Square

The Square scheme is like the rectangle color scheme, but the four colors are evenly spaced on the color wheel.



CCB8B9



BEBDAF



ACC1C0



BABCCA

Rectangle

The Rectangle color scheme consists of four colors that form a rectangle on the color wheel.



CCB8B9



C8BAB0



ACC1C0



B0BFC9

Sweetspot

The Sweet Spot groups the original color and five complimentary colors.



CCB8B9



FFF7F8



CBB8CC



807A7B



000000



808080

Same Dimension

The Same Dimension uses a secret algorithm to generate beautiful new colors.



CCB8B9



FFE0E2



CCC1B8



665C5C



A60008



260002

Inverse Universe

The Inverse Universe completely reimagines the original color for something new.



CCB8B9



FFE0E2



B8C3CC



665C5C



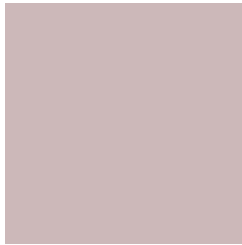
A60008



260002

Previews

White Background



This preview shows how the Hex color CCB8B9 looks on a white background.

Color Contrast Check

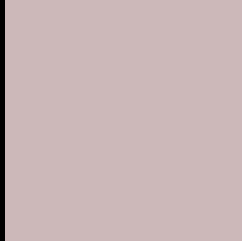
Large Text (above 18pt) WCAG AA × Fail

Any Text WCAG AA × Fail

Large Text (above 18pt) WCAG AAA × Fail

Any Text WCAG AAA × Fail

Black Background



This preview shows how the Hex color CCB8B9 looks on a black background.

Color Contrast Check

Large Text (above 18pt) WCAG AA ✓ Pass

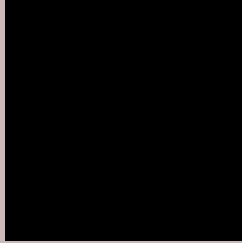
Any Text WCAG AA ✓ Pass

Large Text (above 18pt) WCAG AAA ✓ Pass

Any Text WCAG AAA ✓ Pass

If you want to check with other color combinations, try the [Color Contrast Checker](#).

Hex CCB8B9 Background



This preview shows how black text looks on a background with the Hex color CCB8B9.

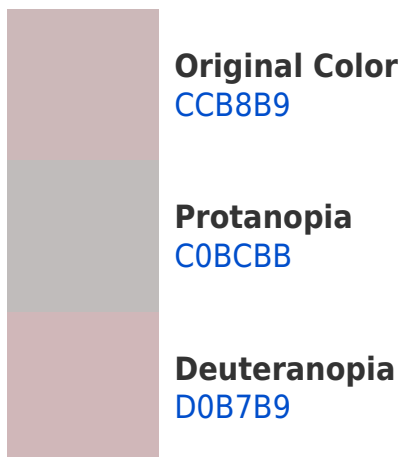


This preview shows how white text looks on a background with the Hex color CCB8B9.

Color Blindness Simulation

Color vision deficiency is a very complex topic, and I could not describe the different causes any better than Wikipedia does, so if you want to learn more, you should check out their [article about color blindness](#).

Dichromacy





Tritanopia
CEB6C4

Trichromacy



Original Color
CCB8B9

Protanomaly
C4BBBA

Deuteranomaly
CFB7B9

Tritanomaly
CDB7C0

Monochromacy



Original Color
CCB8B9

Achromatopsia
BEBEBE

Achromatomaly
C3BCBC

CSS Examples

Text

The CSS property to change the color of the text to Hex CCB8B9 is called "color". The color property can be set on classes, ids or directly on the HTML element.

This example shows how text in the color #CCB8B9 looks like.

```
.text, #text, p{  
    color:#CCB8B9  
}
```

If you want to add a text shadow in that color use the text-shadow property, you can generate a text shadow directly with our [CSS Text Shadow Generator](#).

Here you see how black text with a 4 pixel #CCB8B9 colored shadow looks like.

```
.shadow{ text-shadow: 4px 4px 2px #CCB8B9
}
```

Border

The CSS property to change the border of an element to Hex CCB8B9 is called "border". The border property can be set on classes, ids or directly on the HTML element.

This example shows the color as border, it can be applied via the CSS property "border" or "border-color".

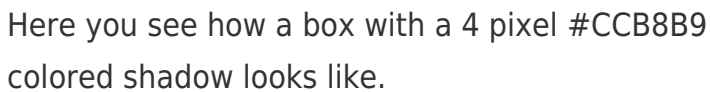
```
.border, #border, table{ border:4px solid
#CCB8B9 }
```

If only the border color should be changed use the property `border-color`.

```
.border{ border-color:#CCB8B9 }
```

If you want to add a box shadow in that color use:

Here you see how a box with a 4 pixel #CCB8B9 colored shadow looks like.



```
.boxshadow{ -moz-box-shadow:4px 4px 4px  
4px #CCB8B9; -webkit-box-shadow:4px 4px  
4px 4px #CCB8B9; box-shadow:4px 4px 4px  
4px #CCB8B9 }
```

Background

The CSS property to change the background color of an element to Hex CCB8B9 is called "background". The background property can be set on classes, ids or directly on the HTML element.

```
.background, #background, body{  
background:#CCB8B9 }
```

If only the background color should be changed can be used:

```
.background{ background-color:#CCB8B9 }
```

This example shows the color as background, it is applied via the CSS property "background".

To optimize and compress your CSS code, you can use our [online CSS compressor and optimizer](#) based on csstidy. If you want to create a linear or radial gradient as background or border, check our [CSS Gradient Generator](#).

Hey! You found this booklet interesting? Support Converting Colors with the new Membership Option!

The pro membership hides all ads, plus gives you double the colors in the color bucket, and more awesome pro features!

[Learn more, Memberships starting at \\$2.50/m!](#)

**Follow me
on Twitter!**

@ConvertingColor