

Converting Colors

Hex(CCB9BE)

Have a look what the booklet for
Hex(CCB9BE) contains.

Hex(CCB9BE)	3
<i>Conversions</i>	4
<i>Details</i>	6
<i>Harmonies</i>	11
<i>Previews</i>	23
<i>Color Blindness Simulation</i>	26
<i>CSS Examples</i>	29

Color

Hex(CCB9BE)

Conversions

Conversions Part 1

Format	Color
Hex	CCB9BE
RGB	204, 185, 190
RGB Percent	80%, 73%, 75%
CMY	0.2000, 0.2745, 0.2549
CMYK	0.00, 0.09, 0.07, 0.20
HSL	344°, 16%, 76%
HSV	344°, 9%, 80%
XYZ	51.5451, 51.2530, 55.8913
YIQ	191.2510, 9.7190, 5.5830

Conversions

Conversions Part 2

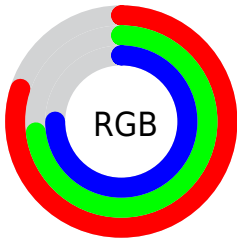
Format	Color
R_{YB}	204, 185, 190
Decimal	13416894
CIE Lab	76.83, 7.60, -0.08
CIE LCh	77, 7.605, 359.385
Yxy	51.2530, 0.3248, 0.3230
Android (android.graphics.Color)	4291606974 (0xFFCCB9BE)
YUV	191.2510, -0.6167, 11.1809
Hunter-Lab	71.5912, 3.2339, 3.8261

Details

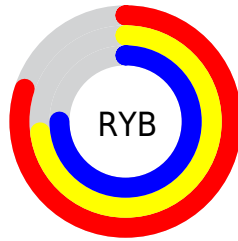
The Hex color **CCB9BE** is a light color, and the websafe version is hex **CCCCCC**. A complement of this color would be **B9CCC7**, and the grayscale version is **BFBFBF**.

A 20% lighter version of the original color is **FFF1F6**, and **968489** is the 20% darker color. If you saturate the color by 10%, you get **CCA5AF**, and if you desaturate by 10%, it is **CCCD**.

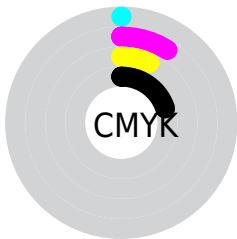
Distribution



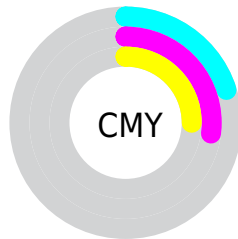
- Red (80%)
- Green (73%)
- Blue (75%)



- Red (80%)
- Yellow (73%)
- Blue (75%)



- Cyan (0%)
- Magenta (9%)
- Yellow (7%)
- Black (20%)



- Cyan (20%)
- Magenta (27%)
- Yellow (25%)

Brightness & Saturation Gradients

These gradients show how the Hex color CCB9BE changes by changing the brightness by 10 percent. The first figure shows a shift by +10% for each color and the second figure -10%.

Similar to the brightness gradients but the following saturation gradients show a change of the Hex color CCB9BE by changing the saturation by 10% instead.

■ CCB9BE

■ CCB9BE

FFFFFF

■ B19EA3

■ FFF1F6

■ 968489

■ 7C6B6F

■ 635357

■ 4B3B40

■ 34262A

■ 1F1115

■ 000000

■ CCB9BE

■ CCB9BE

■ CCA5AF

■ CCCDCD

■ CC90A0

■ CCE2DC

■ CC7C91

■ CCF6EB

■ CC6782

■ CCFFFA

■ CC5373

■ CCFFFF

■ CC3F64

■ CC2A55

■ CC1646

■ CC0137

Harmonies

Analogous

The Analogous color harmony consists of three colors that are next to each other on the color wheel.



C7BAC5



CCB9BE



CDB9B7

Triad

The Triadic color harmony groups three colors that are evenly spaced from another and form a triangle on the color wheel.



CCB9BE



BCFBF1



B0C0C9

Complementary

The Complementary color scheme is a pair of colors which are on the opposite of each other on the color wheel.



CCB9BE



B9CCC7

Split Complementary

Split-complementary colors differ from the complementary color scheme. The scheme consists of three colors, the original color and two neighbors of the complement color.



ADC2C4



CCB9BE



B4C1B6

Square

The Square scheme is like the rectangle color scheme, but the four colors are evenly spaced on the color wheel.



CCB9BE



C4BDB0



AEC2BD



B6BECC

Rectangle

The Rectangle color scheme consists of four colors that form a rectangle on the color wheel.



CCB9BE



CCBAB3



AEC2BD



AEC1C8

Sweetspot

The Sweet Spot groups the original color and five complimentary colors.



CCB9BE



FFF7F9



C7B9CC



807A7C



000000



808080

Same Dimension

The Same Dimension uses a secret algorithm to generate beautiful new colors.



CCB9BE



FFE3EA



CCBDB9



665C5E



A6002C



26000A

Inverse Universe

The Inverse Universe completely reimagines the original color for something new.



CCB9BE



FFE3EA



B9C8CC



665C5E



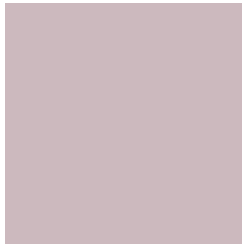
A6002C



26000A

Previews

White Background



This preview shows how the Hex color CCB9BE looks on a white background.

Color Contrast Check

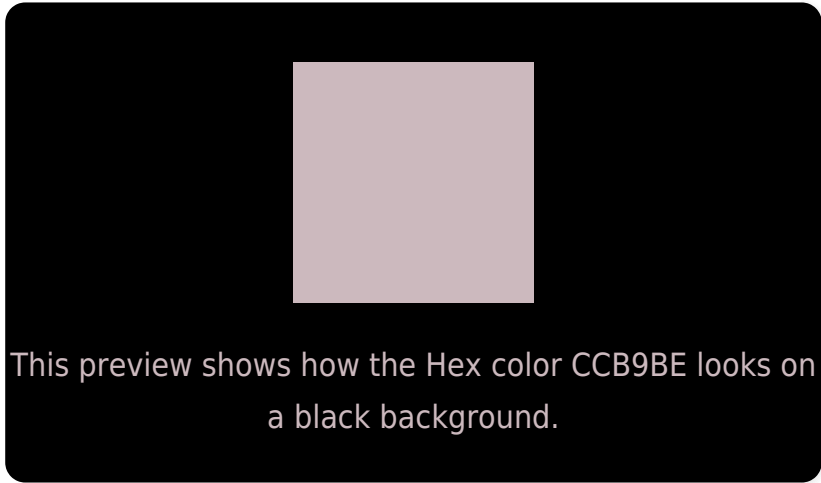
Large Text (above 18pt) WCAG AA × Fail

Any Text WCAG AA × Fail

Large Text (above 18pt) WCAG AAA × Fail

Any Text WCAG AAA × Fail

Black Background



Color Contrast Check

Large Text (above 18pt) WCAG AA ✓ Pass

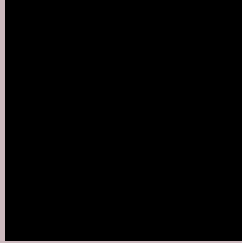
Any Text WCAG AA ✓ Pass

Large Text (above 18pt) WCAG AAA ✓ Pass

Any Text WCAG AAA ✓ Pass

If you want to check with other color combinations, try the [Color Contrast Checker](#).

Hex CCB9BE Background



This preview shows how black text looks on a background with the Hex color CCB9BE.

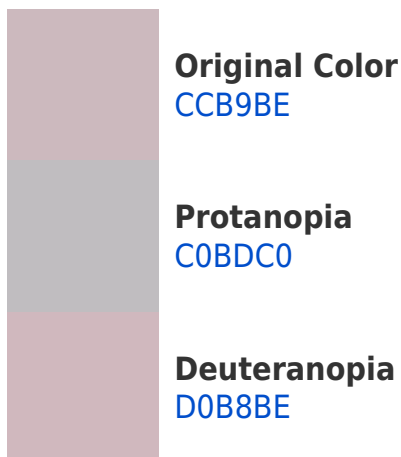


This preview shows how white text looks on a background with the Hex color CCB9BE.

Color Blindness Simulation

Color vision deficiency is a very complex topic, and I could not describe the different causes any better than Wikipedia does, so if you want to learn more, you should check out their [article about color blindness](#).

Dichromacy





Tritanopia
CDB8C6

Trichromacy



Original Color
CCB9BE

Protanomaly
C4BCBF

Deuteranomaly
CFB8BE

Tritanomaly
CDB8C3

Monochromacy



Original Color
CCB9BE

Achromatopsia
BFBFBF

Achromatomaly
C4BDBF

CSS Examples

Text

The CSS property to change the color of the text to Hex CCB9BE is called "color". The color property can be set on classes, ids or directly on the HTML element.

This example shows how text in the color #CCB9BE looks like.

```
.text, #text, p{  
    color:#CCB9BE  
}
```

If you want to add a text shadow in that color use the text-shadow property, you can generate a text shadow directly with our [CSS Text Shadow Generator](#).

Here you see how black text with a 4 pixel #CCB9BE colored shadow looks like.

```
.shadow{ text-shadow: 4px 4px 2px #CCB9BE  
}
```

Border

The CSS property to change the border of an element to Hex CCB9BE is called "border". The border property can be set on classes, ids or directly on the HTML element.

This example shows the color as border, it can be applied via the CSS property "border" or "border-color".

```
.border, #border, table{ border:4px solid  
#CCB9BE }
```

If only the border color should be changed use the property `border-color`.

```
.border{ border-color:#CCB9BE }
```

If you want to add a box shadow in that color use:

Here you see how a box with a 4 pixel #CCB9BE colored shadow looks like.

```
.boxshadow{ -moz-box-shadow:4px 4px 4px  
4px #CCB9BE; -webkit-box-shadow:4px 4px  
4px 4px #CCB9BE; box-shadow:4px 4px 4px  
4px #CCB9BE }
```

Background

The CSS property to change the background color of an element to Hex CCB9BE is called "background". The background property can be set on classes, ids or directly on the HTML element.

```
.background, #background, body{  
background:#CCB9BE }
```

If only the background color should be changed can be used:

```
.background{ background-color:#CCB9BE }
```

This example shows the color as background, it is applied via the CSS property "background".

To optimize and compress your CSS code, you can use our [online CSS compressor and optimizer](#) based on csstidy. If you want to create a linear or radial gradient as background or border, check our [CSS Gradient Generator](#).

Hey! You found this booklet interesting? Support Converting Colors with the new Membership Option!

The pro membership hides all ads, plus gives you double the colors in the color bucket, and more awesome pro features!

[Learn more, Memberships starting at \\$2.50/m!](#)

**Follow me
on Twitter!**

@ConvertingColor