

Converting Colors

Hex(CCBAC4)

Have a look what the booklet for
Hex(CCBAC4) contains.

Hex(CCBAC4)	3
<i>Conversions</i>	4
<i>Details</i>	6
<i>Harmonies</i>	11
<i>Previews</i>	23
<i>Color Blindness Simulation</i>	26
<i>CSS Examples</i>	29

Color

Hex(CCBAC4)

Conversions

Conversions Part 1

Format	Color
Hex	CCBAC4
RGB	204, 186, 196
RGB Percent	80%, 73%, 77%
CMY	0.2000, 0.2706, 0.2314
CMYK	0.00, 0.09, 0.04, 0.20
HSL	327°, 15%, 76%
HSV	327°, 9%, 80%
XYZ	52.4246, 51.9407, 59.4870
YIQ	192.5220, 7.5180, 6.9260

Conversions

Conversions Part 2

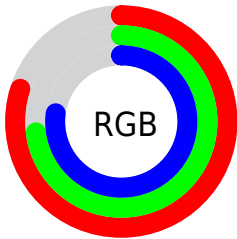
Format	Color
R_{YB}	204, 186, 196
Decimal	13417156
CIE _{Lab}	77.25, 8.13, -2.73
CIE _{LCh}	77, 8.576, 341.424
Yxy	51.9407, 0.3200, 0.3170
Android (android.graphics.Color)	4291607236 (0xFFCCBAC4)
YUV	192.5220, 1.7147, 10.0662
Hunter-Lab	72.0699, 3.7208, 1.5105

Details

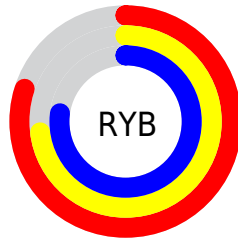
The Hex color **CCBAC4** is a light color, and the websafe version is hex **CCCCCC**. A complement of this color would be **BACCC2**, and the grayscale version is **C1C1C1**.

A 20% lighter version of the original color is **FFF2FD**, and **96858E** is the 20% darker color. If you saturate the color by 10%, you get **CCA6BB**, and if you desaturate by 10%, it is **CCCECD**.

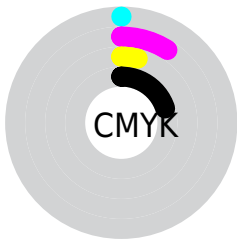
Distribution



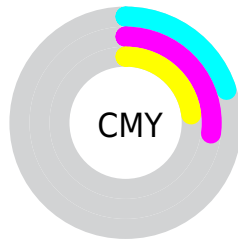
- Red (80%)
- Green (73%)
- Blue (77%)



- Red (80%)
- Yellow (73%)
- Blue (77%)



- Cyan (0%)
- Magenta (9%)
- Yellow (4%)
- Black (20%)



- Cyan (20%)
- Magenta (27%)
- Yellow (23%)

Brightness & Saturation Gradients

These gradients show how the Hex color CCBAC4 changes by changing the brightness by 10 percent. The first figure shows a shift by +10% for each color and the second figure -10%.

Similar to the brightness gradients but the following saturation gradients show a change of the Hex color CCBAC4 by changing the saturation by 10% instead.

■ CCBAC4

■ CCBAC4

FFFFFF

■ B19FA9

■ FFF2FD

■ 96858E

■ 7C6C75

■ 63535C

■ 4B3C45

■ 34262E

■ 1F121A

■ 000000

■ CCBAC4

■ CCBAC4

■ CCA6BB

■ CCCECD

■ CC91B2

■ CCE3D6

■ CC7DA9

■ CCF7DF

■ CC68A0

■ CCFFE8

■ CC5497

■ CCFFF1

■ CC408E

■ CCFFFA

■ CC2B85

■ CCFFFF

■ CC177B

■ CC0272

Harmonies

Analogous

The Analogous color harmony consists of three colors that are next to each other on the color wheel.



C4BCCB



CCBAC4



D0B9BC

Triad

The Triadic color harmony groups three colors that are evenly spaced from another and form a triangle on the color wheel.



CCBAC4



C2BFAF



ACC3C9

Complementary

The Complementary color scheme is a pair of colors which are on the opposite of each other on the color wheel.



CCBAC4



BACCC2

Split Complementary

Split-complementary colors differ from the complementary color scheme. The scheme consists of three colors, the original color and two neighbors of the complement color.



ACC4C2



CCBAC4



B9C2B3

Square

The Square scheme is like the rectangle color scheme, but the four colors are evenly spaced on the color wheel.



CCBAC4



CABDB0



B1C3B9



B1C1CE

Rectangle

The Rectangle color scheme consists of four colors that form a rectangle on the color wheel.



CCBAC4



D0BAB7



B1C3B9



ABC3C7

Sweetspot

The Sweet Spot groups the original color and five complimentary colors.



CCBAC4



FFF7FC



C2BACC



807A7D



000000



808080

Same Dimension

The Same Dimension uses a secret algorithm to generate beautiful new colors.



CCBAC4



FFE3F3



CCBABB



665C61



A6005C



260015

Inverse Universe

The Inverse Universe completely reimagines the original color for something new.



CCBAC4



FFE3F3



BACCCB



665C61



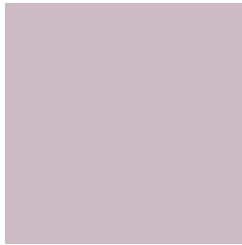
A6005C



260015

Previews

White Background



This preview shows how the Hex color CCBAC4 looks on a white background.

Color Contrast Check

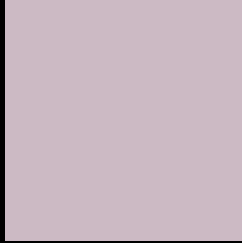
Large Text (above 18pt) WCAG AA × Fail

Any Text WCAG AA × Fail

Large Text (above 18pt) WCAG AAA × Fail

Any Text WCAG AAA × Fail

Black Background



This preview shows how the Hex color CCBAC4 looks on a black background.

Color Contrast Check

Large Text (above 18pt) WCAG AA ✓ Pass

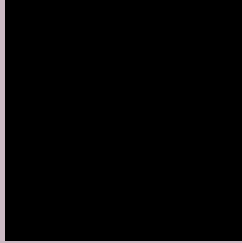
Any Text WCAG AA ✓ Pass

Large Text (above 18pt) WCAG AAA ✓ Pass

Any Text WCAG AAA ✓ Pass

If you want to check with other color combinations, try the [Color Contrast Checker](#).

Hex CCBAC4 Background



This preview shows how black text looks on a background with the Hex color CCBAC4.



This preview shows how white text looks on a background with the Hex color CCBAC4.

Color Blindness Simulation

Color vision deficiency is a very complex topic, and I could not describe the different causes any better than Wikipedia does, so if you want to learn more, you should check out their [article about color blindness](#).

Dichromacy



Original Color
CCBAC4

Protanopia
C0BEC6

Deuteranopia
CFB9C4



Tritanopia
CDB9C8

Trichromacy



Original Color
CCBAC4

Protanomaly
C4BDC5

Deuteranomaly
CEB9C4

Tritanomaly
CDB9C7

Monochromacy



Original Color
CCBAC4

Achromatopsia
C1C1C1

Achromatomaly
C5BEC2

CSS Examples

Text

The CSS property to change the color of the text to Hex CCBAC4 is called "color". The color property can be set on classes, ids or directly on the HTML element.

This example shows how text in the color #CCBAC4 looks like.

```
.text, #text, p{  
    color:#CCBAC4  
}
```

If you want to add a text shadow in that color use the text-shadow property, you can generate a text shadow directly with our [CSS Text Shadow Generator](#).

Here you see how black text with a 4 pixel #CCBAC4 colored shadow looks like.

```
.shadow{ text-shadow: 4px 4px 2px #CCBAC4
}
```

Border

The CSS property to change the border of an element to Hex CCBAC4 is called "border". The border property can be set on classes, ids or directly on the HTML element.

This example shows the color as border, it can be applied via the CSS property "border" or "border-color".

```
.border, #border, table{ border:4px solid
#CCBAC4 }
```

If only the border color should be changed use the property `border-color`.

```
.border{ border-color:#CCBAC4 }
```

If you want to add a box shadow in that color use:

Here you see how a box with a 4 pixel #CCBAC4 colored shadow looks like.

```
.boxshadow{ -moz-box-shadow:4px 4px 4px  
4px #CCBAC4; -webkit-box-shadow:4px 4px  
4px 4px #CCBAC4; box-shadow:4px 4px 4px  
4px #CCBAC4 }
```

Background

The CSS property to change the background color of an element to Hex CCBAC4 is called "background". The background property can be set on classes, ids or directly on the HTML element.

```
.background, #background, body{  
background:#CCBAC4 }
```

If only the background color should be changed can be used:

```
.background{ background-color:#CCBAC4 }
```

This example shows the color as background, it is applied via the CSS property "background".

To optimize and compress your CSS code, you can use our [online CSS compressor and optimizer](#) based on csstidy. If you want to create a linear or radial gradient as background or border, check our [CSS Gradient Generator](#).

Hey! You found this booklet interesting? Support Converting Colors with the new Membership Option!

The pro membership hides all ads, plus gives you double the colors in the color bucket, and more awesome pro features!

[Learn more, Memberships starting at \\$2.50/m!](#)

**Follow me
on Twitter!**

@ConvertingColor