

Converting Colors

Hex(CCBDC8)

Have a look what the booklet for
Hex(CCBDC8) contains.

Hex(CCBDC8)	3
<i>Conversions</i>	4
<i>Details</i>	6
<i>Harmonies</i>	11
<i>Previews</i>	23
<i>Color Blindness Simulation</i>	26
<i>CSS Examples</i>	29

Color

Hex(CCBDC8)

Conversions

Conversions Part 1

Format	Color
Hex	CCBDC8
RGB	204, 189, 200
RGB Percent	80%, 74%, 78%
CMY	0.2000, 0.2588, 0.2157
CMYK	0.00, 0.07, 0.02, 0.20
HSL	316°, 13%, 77%
HSV	316°, 7%, 80%
XYZ	53.5248, 53.4027, 62.1303
YIQ	194.7390, 5.4090, 6.6010

Conversions

Conversions Part 2

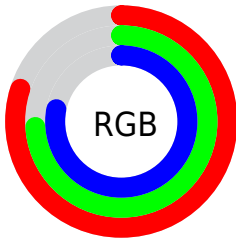
Format	Color
RYB	204, 189, 200
Decimal	13417928
CIELab	78.11, 7.24, -3.62
CIELCh	78, 8.098, 333.413
Yxy	53.4027, 0.3166, 0.3159
Android (android.graphics.Color)	4291608008 (0xFFCCBDC8)
YUV	194.7390, 2.5937, 8.1219
Hunter-Lab	73.0771, 2.8559, 0.7456

Details

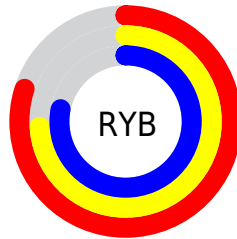
The Hex color **CCBDC8** is a light color, and the websafe version is hex **CCCCCC**. A complement of this color would be **BDCCC1**, and the grayscale version is **C3C3C3**.

A 20% lighter version of the original color is **FFF5FF**, and **968892** is the 20% darker color. If you saturate the color by 10%, you get **CCA9C3**, and if you desaturate by 10%, it is **CCD1CD**.

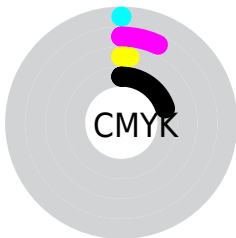
Distribution



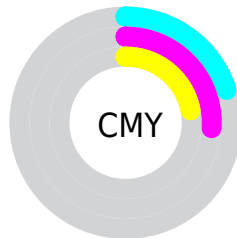
- Red (80%)
- Green (74%)
- Blue (78%)



- Red (80%)
- Yellow (74%)
- Blue (78%)



- Cyan (0%)
- Magenta (7%)
- Yellow (2%)
- Black (20%)



- Cyan (20%)
- Magenta (26%)
- Yellow (22%)

Brightness & Saturation Gradients

These gradients show how the Hex color CCBDC8 changes by changing the brightness by 10 percent. The first figure shows a shift by +10% for each color and the second figure -10%.

Similar to the brightness gradients but the following saturation gradients show a change of the Hex color CCBDC8 by changing the saturation by 10% instead.

 CCBDC8

FFFFFF

 FFF5FF

 CCBDC8

 B1A2AD


 968892

 7C6E78

 635660

 4B3F48

 342932

 1F151D

 000001

 000000

 CCBDC8

 CCBDC8

 CCA9C3

 CCD1CD

 CC94BD

 CCE6D3

 CC80B8

 CCFAD8

 CC6BB2

 CCFFDE

 CC57AD

 CCFFE3

 CC43A7

 CCFFE9

 CC2EA2

 CCFFEE

 CC1A9C

 CCFFF4

 CC0597

 CCFFF9

Harmonies

Analogous

The Analogous color harmony consists of three colors that are next to each other on the color wheel.



C4BFCE



CCBDC8



D1BCC1

Triad

The Triadic color harmony groups three colors that are evenly spaced from another and form a triangle on the color wheel.



CCBDC8



C7C1B2



AFC5C9

Complementary

The Complementary color scheme is a pair of colors which are on the opposite of each other on the color wheel.



CCBDC8



BDCC1

Split Complementary

Split-complementary colors differ from the complementary color scheme. The scheme consists of three colors, the original color and two neighbors of the complement color.



B0C6C2



CCBDC8



BEC3B5

Square

The Square scheme is like the rectangle color scheme, but the four colors are evenly spaced on the color wheel.



CCBDC8



CEBEB4



B6C5BA



B3C4CE

Rectangle

The Rectangle color scheme consists of four colors that form a rectangle on the color wheel.



CCBDC8



D2BCBB



B6C5BA



AFC6C7

Sweetspot

The Sweet Spot groups the original color and five complimentary colors.



CCBDC8



FFFAFE



C1BDCC



807D7F



000000



808080

Same Dimension

The Same Dimension uses a secret algorithm to generate beautiful new colors.



CCBDC8



FFE8F9



CCBDC1



665C63



A6007A



26001C

Inverse Universe

The Inverse Universe completely reimagines the original color for something new.



CCBDC8



FFE8F9



BDCCC9



665C63



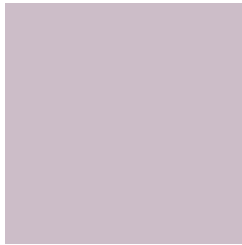
A6007A



26001C

Previews

White Background



This preview shows how the Hex color CCBDC8 looks on a white background.

Color Contrast Check

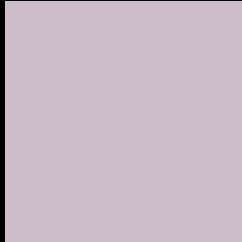
Large Text (above 18pt) WCAG AA × Fail

Any Text WCAG AA × Fail

Large Text (above 18pt) WCAG AAA × Fail

Any Text WCAG AAA × Fail

Black Background



This preview shows how the Hex color CCBDC8 looks on a black background.

Color Contrast Check

Large Text (above 18pt) WCAG AA ✓ Pass

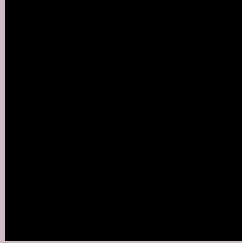
Any Text WCAG AA ✓ Pass

Large Text (above 18pt) WCAG AAA ✓ Pass

Any Text WCAG AAA ✓ Pass

If you want to check with other color combinations, try the [Color Contrast Checker](#).

Hex CCBDC8 Background



This preview shows how black text looks on a background with the Hex color CCBDC8.

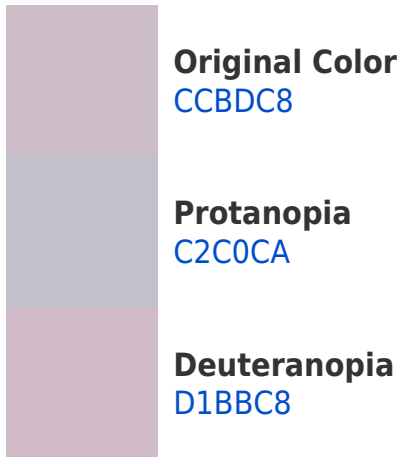


This preview shows how white text looks on a background with the Hex color CCBDC8.

Color Blindness Simulation

Color vision deficiency is a very complex topic, and I could not describe the different causes any better than Wikipedia does, so if you want to learn more, you should check out their [article about color blindness](#).

Dichromacy



Trichromacy



Original Color
CCBDC8

Protanomaly
C6BFC9

Deuteranomaly
CFBCC8

Tritanomaly
CCBCCA

Monochromacy



Original Color
CCBDC8

Achromatopsia
C3C3C3

Achromatomaly
C6C1C5

CSS Examples

Text

The CSS property to change the color of the text to Hex CCBDC8 is called "color". The color property can be set on classes, ids or directly on the HTML element.

This example shows how text in the color #CCBDC8 looks like.

```
.text, #text, p{  
    color:#CCBDC8  
}
```

If you want to add a text shadow in that color use the text-shadow property, you can generate a text shadow directly with our [CSS Text Shadow Generator](#).

Here you see how black text with a 4 pixel #CCBDC8 colored shadow looks like.

```
.shadow{ text-shadow: 4px 4px 2px #CCBDC8  
}
```

Border

The CSS property to change the border of an element to Hex CCBDC8 is called "border". The border property can be set on classes, ids or directly on the HTML element.

This example shows the color as border, it can be applied via the CSS property "border" or "border-color".

```
.border, #border, table{ border:4px solid  
#CCBDC8 }
```

If only the border color should be changed use the property `border-color`.

```
.border{ border-color:#CCBDC8 }
```

If you want to add a box shadow in that color use:

Here you see how a box with a 4 pixel #CCBDC8 colored shadow looks like.

```
.boxshadow{ -moz-box-shadow:4px 4px 4px  
4px #CCBDC8; -webkit-box-shadow:4px 4px  
4px 4px #CCBDC8; box-shadow:4px 4px 4px  
4px #CCBDC8 }
```

Background

The CSS property to change the background color of an element to Hex CCBDC8 is called "background". The background property can be set on classes, ids or directly on the HTML element.

```
.background, #background, body{  
background:#CCBDC8 }
```

If only the background color should be changed can be used:

```
.background{ background-color:#CCBDC8 }
```

This example shows the color as background, it is applied via the CSS property "background".

To optimize and compress your CSS code, you can use our [online CSS compressor and optimizer](#) based on csstidy. If you want to create a linear or radial gradient as background or border, check our [CSS Gradient Generator](#).

Hey! You found this booklet interesting? Support Converting Colors with the new Membership Option!

The pro membership hides all ads, plus gives you double the colors in the color bucket, and more awesome pro features!

[Learn more, Memberships starting at \\$2.50/m!](#)

**Follow me
on Twitter!**

@ConvertingColor