

# Converting Colors

Hex(CCBEC2)

Have a look what the booklet for  
Hex(CCBEC2) contains.

<b>Hex(CCBEC2)</b> .....	3
<i><b>Conversions</b></i> .....	4
<i><b>Details</b></i> .....	6
<i><b>Harmonies</b></i> .....	11
<i><b>Previews</b></i> .....	23
<i><b>Color Blindness Simulation</b></i> .....	26
<i><b>CSS Examples</b></i> .....	29

# **Color**

**Hex(CCBEC2)**

# Conversions

## Conversions Part 1

Format	Color
Hex	CCBEC2
RGB	204, 190, 194
RGB Percent	80%, 75%, 76%
CMY	0.2000, 0.2549, 0.2392
CMYK	0.00, 0.07, 0.05, 0.20
HSL	343°, 12%, 77%
HSV	343°, 7%, 80%
XYZ	53.0529, 53.5593, 58.5807
YIQ	194.6420, 7.0600, 4.2120

# Conversions

## Conversions Part 2

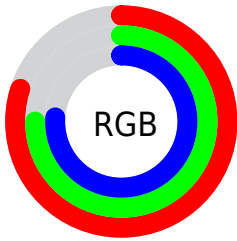
<b>Format</b>	<b>Color</b>
<b>R<sub>YB</sub></b>	204, 190, 194
Decimal	13418178
CIE <sub>Lab</sub>	78.20, 5.63, -0.24
CIE <sub>LCh</sub>	78, 5.634, 357.513
Yxy	53.5593, 0.3212, 0.3242
Android (android.graphics.Color)	4291608258 (0xFFCCBEC2)
YUV	194.6420, -0.3165, 8.2070
Hunter-Lab	73.1842, 1.3263, 3.7700

# Details

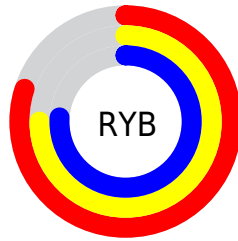
The Hex color **CCBEC2** is a light color, and the websafe version is hex **CCCCCC**. A complement of this color would be **BECCC8**, and the grayscale version is **C3C3C3**.

A 20% lighter version of the original color is **FFF6FA**, and **96898C** is the 20% darker color. If you saturate the color by 10%, you get **CCAAB3**, and if you desaturate by 10%, it is **CCD2D1**.

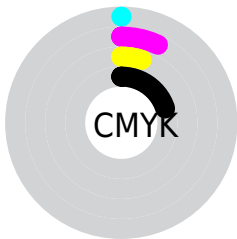
# Distribution



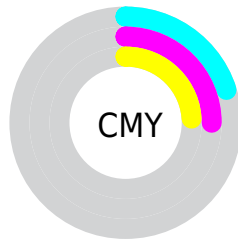
- Red (80%)
- Green (75%)
- Blue (76%)



- Red (80%)
- Yellow (75%)
- Blue (76%)



- Cyan (0%)
- Magenta (7%)
- Yellow (5%)
- Black (20%)



- Cyan (20%)
- Magenta (25%)
- Yellow (24%)

# Brightness & Saturation Gradients

These gradients show how the Hex color CCBE2 changes by changing the brightness by 10 percent. The first figure shows a shift by +10% for each color and the second figure -10%.

Similar to the brightness gradients but the following saturation gradients show a change of the Hex color CCBE2 by changing the saturation by 10% instead.



■ CCBEC2

■ CCBEC2

FFFFFF

■ B1A3A7

■ FFF6FA

■ 96898C

■ 7C6F73

■ 63575A

■ 4B4043

■ 342A2D

■ 1F1518

■ 000000

■ CCBEC2

■ CCBEC2

■ CCAAB3

■ CCD2D1

■ CC95A5

■ CCE7DF

■ CC8196

■ CCFBEE

■ CC6C88

■ CCFFFC

■ CC5879

■ CCFFFF

■ CC446B

■ CC2F5C

■ CC1B4D

■ CC063F

# Harmonies

## Analogous

The Analogous color harmony consists of three colors that are next to each other on the color wheel.



C8BFC7



CCBEC2



CDBEBD

# Triad

The Triadic color harmony groups three colors that are evenly spaced from another and form a triangle on the color wheel.



CCBEC2



C0C3B8



B7C3CA

# Complementary

The Complementary color scheme is a pair of colors which are on the opposite of each other on the color wheel.



CCBEC2



BECC8

# Split Complementary

Split-complementary colors differ from the complementary color scheme. The scheme consists of three colors, the original color and two neighbors of the complement color.



B5C4C6



CCBEC2



BBC4BC

# Square

The Square scheme is like the rectangle color scheme, but the four colors are evenly spaced on the color wheel.



CCBEC2



C6C1B7



B6C5C1



BCC2CC

# Rectangle

The Rectangle color scheme consists of four colors that form a rectangle on the color wheel.



CCBEC2



CCBFBA



B6C5C1



B6C4C9



# Sweetspot

The Sweet Spot groups the original color and five complimentary colors.



CCBEC2



FFFAFB



C8BECC



807D7E



000000



808080



# Same Dimension

The Same Dimension uses a secret algorithm to generate beautiful new colors.



CCBEC2



FFEBF0



CCC1BE



665C5F



A6002F



26000B



# Inverse Universe

The Inverse Universe completely reimagines the original color for something new.



CCBEC2



FFEBF0



BEC9CC



665C5F



A6002F

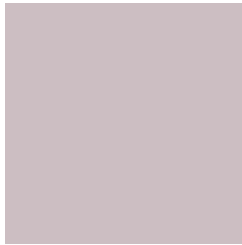


26000B



# Previews

## White Background



This preview shows how the Hex color CCBEC2 looks on a white background.

## Color Contrast Check

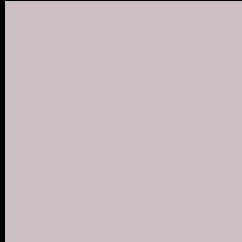
Large Text (above 18pt) WCAG AA × Fail

Any Text WCAG AA × Fail

Large Text (above 18pt) WCAG AAA × Fail

Any Text WCAG AAA × Fail

# Black Background



This preview shows how the Hex color CCBE22 looks on a black background.

## Color Contrast Check

Large Text (above 18pt) WCAG AA ✓ Pass

Any Text WCAG AA ✓ Pass

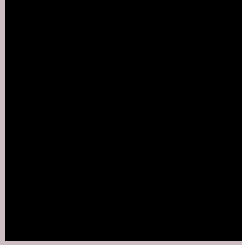
Large Text (above 18pt) WCAG AAA ✓ Pass

Any Text WCAG AAA ✓ Pass

If you want to check with other color combinations, try the [Color Contrast Checker](#).



## Hex CCBEC2 Background



This preview shows how black text looks on a background with the Hex color CCBEC2.



This preview shows how white text looks on a background with the Hex color CCBEC2.

# Color Blindness Simulation

Color vision deficiency is a very complex topic, and I could not describe the different causes any better than Wikipedia does, so if you want to learn more, you should check out their [article about color blindness](#).

## Dichromacy



**Original Color**  
CCBEC2

**Protanopia**  
C4C0C3

**Deuteranopia**  
D3BBC3



# Trichromacy



**Original Color**  
CCBEC2

**Protanomaly**  
C7BFC3

**Deuteranomaly**  
D0BCC3

**Tritanomaly**  
CDBDC8

# Monochromacy



**Original Color**  
CCBEC2

**Achromatopsia**  
C3C3C3

**Achromatomaly**  
C6C1C3

# CSS Examples

## Text

The CSS property to change the color of the text to Hex CCBEC2 is called "color". The color property can be set on classes, ids or directly on the HTML element.

This example shows how text in the color #CCBEC2 looks like.

```
.text, #text, p{  
    color:#CCBEC2  
}
```

If you want to add a text shadow in that color use the text-shadow property, you can generate a text shadow directly with our [CSS Text Shadow Generator](#).

Here you see how black text with a 4 pixel #CCBEC2 colored shadow looks like.

```
.shadow{ text-shadow: 4px 4px 2px #CCBEC2  
}
```

## Border

The CSS property to change the border of an element to Hex CCBEC2 is called "border". The border property can be set on classes, ids or directly on the HTML element.

This example shows the color as border, it can be applied via the CSS property "border" or "border-color".

```
.border, #border, table{ border:4px solid  
#CCBEC2 }
```

If only the border color should be changed use the property `border-color`.

```
.border{ border-color:#CCBEC2 }
```

If you want to add a box shadow in that color use:

Here you see how a box with a 4 pixel #CCBEC2 colored shadow looks like.

```
.boxshadow{ -moz-box-shadow:4px 4px 4px  
4px #CCBEC2; -webkit-box-shadow:4px 4px  
4px 4px #CCBEC2; box-shadow:4px 4px 4px  
4px #CCBEC2 }
```

# Background

The CSS property to change the background color of an element to Hex CCBEC2 is called "background". The background property can be set on classes, ids or directly on the HTML element.

```
.background, #background, body{  
background:#CCBEC2 }
```

If only the background color should be changed can be used:

```
.background{ background-color:#CCBEC2 }
```

This example shows the color as background, it is applied via the CSS property "background".

To optimize and compress your CSS code, you can use our [online CSS compressor and optimizer](#) based on csstidy. If you want to create a linear or radial gradient as background or border, check our [CSS Gradient Generator](#).



Hey! You found this booklet interesting? Support Converting Colors with the new Membership Option!

The pro membership hides all ads, plus gives you double the colors in the color bucket, and more awesome pro features!

**[Learn more, Memberships starting at \\$2.50/m!](#)**

**Follow me  
on Twitter!**

@ConvertingColor