

Converting Colors

Hex(CD7AE4)

Have a look what the booklet for
Hex(CD7AE4) contains.

Hex(CD7AE4)	3
<i>Conversions</i>	4
<i>Details</i>	6
<i>Harmonies</i>	11
<i>Previews</i>	23
<i>Color Blindness Simulation</i>	26
<i>CSS Examples</i>	29

Color

Hex(CD7AE4)

Conversions

Conversions Part 1

Format	Color
Hex	CD7AE4
RGB	205, 122, 228
RGB Percent	80%, 48%, 89%
CMY	0.1961, 0.5216, 0.1059
CMYK	0.10, 0.46, 0.00, 0.11
HSL	287°, 66%, 69%
HSV	287°, 46%, 89%
XYZ	46.1400, 32.4996, 77.2400
YIQ	158.9010, 15.4420, 50.5620

Conversions

Conversions Part 2

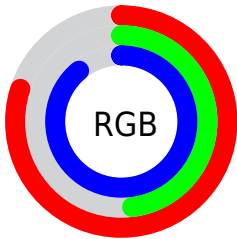
Format	Color
RYB	205, 122, 228
Decimal	13466340
CIELab	63.75, 49.20, -40.86
CIElCh	64, 63.954, 320.285
Yxy	32.4996, 0.2960, 0.2085
Android (android.graphics.Color)	4291656420 (0xFFCD7AE4)
YUV	158.9010, 34.0658, 40.4288
Hunter-Lab	57.0085, 44.7047, -40.4253

Details

The Hex color **CD7AE4** is a light color, and the websafe version is hex **CC66CC**. A complement of this color would be **91E47A**, and the grayscale version is **9F9F9F**.

A 20% lighter version of the original color is **FFB0FF**, and **9546AC** is the 20% darker color. If you saturate the color by 10%, you get **C863E4**, and if you desaturate by 10%, it is **D291E4**.

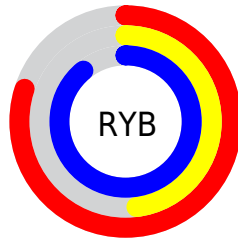
Distribution



Red (80%)

Green (48%)

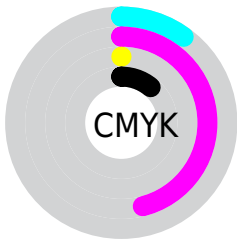
Blue (89%)



Red (80%)

Yellow (48%)

Blue (89%)

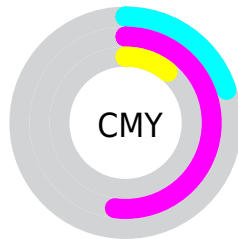


Cyan (10%)

Magenta (46%)

Yellow (0%)

Black (11%)



Cyan (20%)

Magenta (52%)

Yellow (11%)

Brightness & Saturation Gradients

These gradients show how the Hex color CD7AE4 changes by changing the brightness by 10 percent. The first figure shows a shift by +10% for each color and the second figure -10%.

Similar to the brightness gradients but the following saturation gradients show a change of the Hex color CD7AE4 by changing the saturation by 10% instead.

 CD7AE4

 CD7AE4

FFFFFF

 B160C8

 FFB0FF

 9546AC

 FFCDFE

 792B91

 FFE9FF

 5F0D77

 44005E

 2C0046

 0F002F

 000119

 000000

 CD7AE4

 CD7AE4

 C863E4

 D291E4

 C34CE4

 D7A8E4

 BE36E4

 DCBEE4

 B91FE4

 E1D5E4

 B408E4

 E6ECE4

 B300E4

 EBFFE4

 F0FFE4

 F5FFE4

 FAFFE4

Harmonies

Analogous

The Analogous color harmony consists of three colors that are next to each other on the color wheel.



7793FF



CD7AE4



F866AF

Triad

The Triadic color harmony groups three colors that are evenly spaced from another and form a triangle on the color wheel.



CD7AE4



C7911D



00B5C0

Complementary

The Complementary color scheme is a pair of colors which are on the opposite of each other on the color wheel.



CD7AE4



91E47A

Split Complementary

Split-complementary colors differ from the complementary color scheme. The scheme consists of three colors, the original color and two neighbors of the complement color.



00B485



CD7AE4



92A320

Square

The Square scheme is like the rectangle color scheme, but the four colors are evenly spaced on the color wheel.



CD7AE4



EE7A43



4AAF4D



00B1F1

Rectangle

The Rectangle color scheme consists of four colors that form a rectangle on the color wheel.



CD7AE4



FF6389



4AAF4D



00B6AD

Sweetspot

The Sweet Spot groups the original color and five complimentary colors.



CD7AE4



F7DBFF



7A93E4



7B6A80



000000



808080

Same Dimension

The Same Dimension uses a secret algorithm to generate beautiful new colors.



CD7AE4



E070FF



E47AC8



706773



8C00B3



280033

Inverse Universe

The Inverse Universe completely reimagines the original color for something new.



E47A91



FF708F



7AE496



73676A



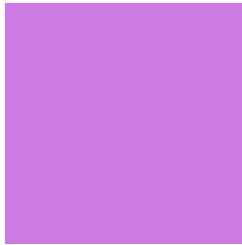
B30027



33000B

Previews

White Background



This preview shows how the Hex color CD7AE4 looks on a white background.

Color Contrast Check

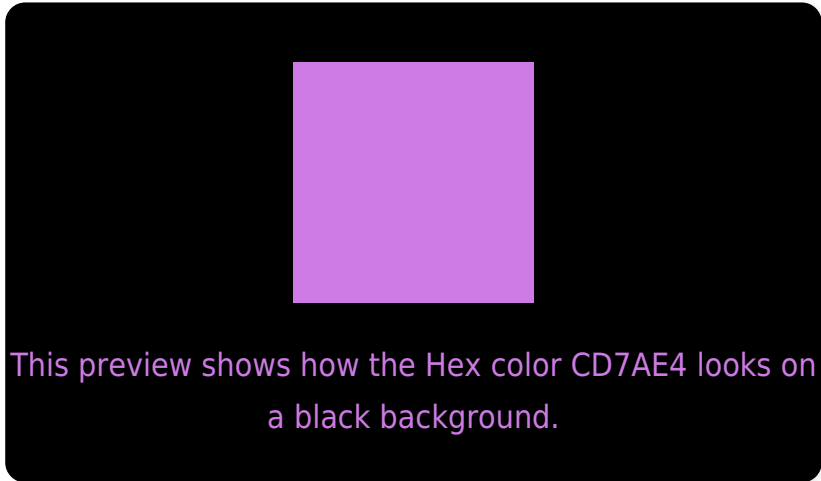
Large Text (above 18pt) WCAG AA × Fail

Any Text WCAG AA × Fail

Large Text (above 18pt) WCAG AAA × Fail

Any Text WCAG AAA × Fail

Black Background



Color Contrast Check

Large Text (above 18pt) WCAG AA ✓ Pass

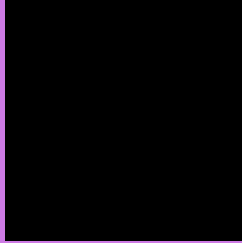
Any Text WCAG AA ✓ Pass

Large Text (above 18pt) WCAG AAA ✓ Pass

Any Text WCAG AAA ✓ Pass

If you want to check with other color combinations, try the [Color Contrast Checker](#).

Hex CD7AE4 Background



This preview shows how black text looks on a background with the Hex color CD7AE4.

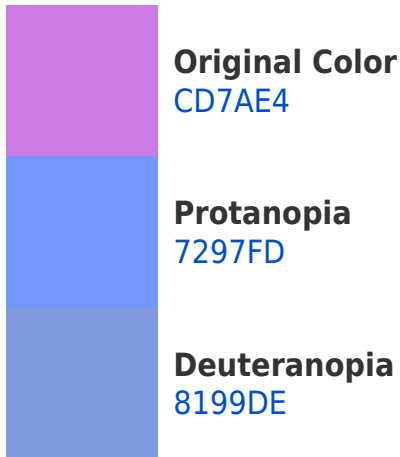


This preview shows how white text looks on a background with the Hex color CD7AE4.

Color Blindness Simulation

Color vision deficiency is a very complex topic, and I could not describe the different causes any better than Wikipedia does, so if you want to learn more, you should check out their [article about color blindness](#).

Dichromacy





Tritanopia
C28C97

Trichromacy



Original Color
CD7AE4



Protanomaly
938CF4



Deuteranomaly
9D8EE0



Tritanomaly
C685B3

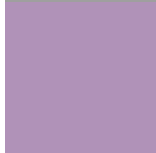
Monochromacy



Original Color
CD7AE4



Achromatopsia
9F9F9F



Achromatomaly
B092B8

CSS Examples

Text

The CSS property to change the color of the text to Hex CD7AE4 is called "color". The color property can be set on classes, ids or directly on the HTML element.

This example shows how text in the color #CD7AE4 looks like.

```
.text, #text, p{  
    color:#CD7AE4  
}
```

If you want to add a text shadow in that color use the text-shadow property, you can generate a text shadow directly with our [CSS Text Shadow Generator](#).

Here you see how black text with a 4 pixel #CD7AE4 colored shadow looks like.

```
.shadow{ text-shadow: 4px 4px 2px #CD7AE4
}
```

Border

The CSS property to change the border of an element to Hex CD7AE4 is called "border". The border property can be set on classes, ids or directly on the HTML element.

This example shows the color as border, it can be applied via the CSS property "border" or "border-color".

```
.border, #border, table{ border:4px solid
#CD7AE4 }
```

If only the border color should be changed use the property `border-color`.

```
.border{ border-color:#CD7AE4 }
```

If you want to add a box shadow in that color use:

Here you see how a box with a 4 pixel #CD7AE4 colored shadow looks like.

```
.boxshadow{ -moz-box-shadow:4px 4px 4px  
4px #CD7AE4; -webkit-box-shadow:4px 4px  
4px 4px #CD7AE4; box-shadow:4px 4px 4px  
4px #CD7AE4 }
```

Background

The CSS property to change the background color of an element to Hex CD7AE4 is called "background". The background property can be set on classes, ids or directly on the HTML element.

```
.background, #background, body{  
background:#CD7AE4 }
```

If only the background color should be changed can be used:

```
.background{ background-color:#CD7AE4 }
```

This example shows the color as background, it is applied via the CSS property "background".

To optimize and compress your CSS code, you can use our [online CSS compressor and optimizer](#) based on csstidy. If you want to create a linear or radial gradient as background or border, check our [CSS Gradient Generator](#).

Hey! You found this booklet interesting? Support Converting Colors with the new Membership Option!

The pro membership hides all ads, plus gives you double the colors in the color bucket, and more awesome pro features!

[Learn more, Memberships starting at \\$2.50/m!](#)

**Follow me
on Twitter!**

@ConvertingColor