

Converting Colors

Hex(CD7D7A)

Have a look what the booklet for
Hex(CD7D7A) contains.

Hex(CD7D7A)	3
<i>Conversions</i>	4
<i>Details</i>	6
<i>Harmonies</i>	11
<i>Previews</i>	23
<i>Color Blindness Simulation</i>	26
<i>CSS Examples</i>	29

Color

Hex(CD7D7A)

Conversions

Conversions Part 1

Format	Color
Hex	CD7D7A
RGB	205, 125, 122
RGB Percent	80%, 49%, 48%
CMY	0.1961, 0.5098, 0.5216
CMYK	0.00, 0.39, 0.40, 0.20
HSL	2°, 45%, 64%
HSV	2°, 40%, 80%
XYZ	36.0233, 29.0515, 22.1212
YIQ	148.5780, 48.6430, 16.0270

Conversions

Conversions Part 2

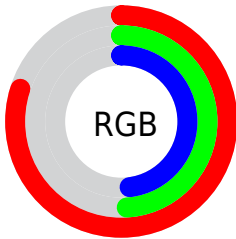
Format	Color
R_{YB}	205, 125, 122
Decimal	13467002
CIE Lab	60.83, 30.69, 14.89
CIE LCh	61, 34.110, 25.875
Yxy	29.0515, 0.4131, 0.3332
Android (android.graphics.Color)	4291657082 (0xFFCD7D7A)
YUV	148.5780, -13.1030, 49.4821
Hunter-Lab	53.8995, 24.9751, 13.3960

Details

The Hex color **CD7D7A** is a dark color, and the websafe version is hex **CC6666**. A complement of this color would be **7ACACD**, and the grayscale version is **959595**.

A 20% lighter version of the original color is **FFB3AE**, and **944B49** is the 20% darker color. If you saturate the color by 10%, you get **CD6966**, and if you desaturate by 10%, it is **CD918F**.

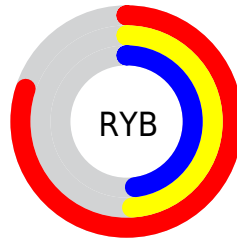
Distribution



Red (80%)

Green (49%)

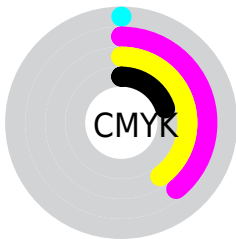
Blue (48%)



Red (80%)

Yellow (49%)

Blue (48%)

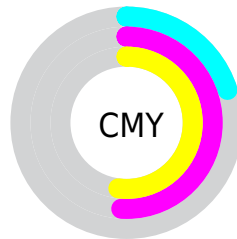


Cyan (0%)

Magenta (39%)

Yellow (40%)

Black (20%)



Cyan (20%)

Magenta (51%)

Yellow (52%)

Brightness & Saturation Gradients

These gradients show how the Hex color CD7D7A changes by changing the brightness by 10 percent. The first figure shows a shift by +10% for each color and the second figure -10%.

Similar to the brightness gradients but the following saturation gradients show a change of the Hex color CD7D7A by changing the saturation by 10% instead.

 CD7D7A

 CD7D7A

FFFFFF

 B06361

 FF33AE

 944B49

 FFCECA

 783233

 FFEBE6

 5D1A1E

 430105

 2C0001

 000000

 CD7D7A

 CD7D7A

 CD6966

 CD918F

 CD5551

 CDA5A3

 CD423D

 CDB8B8

 CD2E28

 CDCCCC

 CD1A14

 CDE0E1

 CD0700

 CDF4F5

 CDFFFF

Harmonies

Analogous

The Analogous color harmony consists of three colors that are next to each other on the color wheel.



C97C98



CD7D7A



C18562

Triad

The Triadic color harmony groups three colors that are evenly spaced from another and form a triangle on the color wheel.



CD7D7A



689F70



5F97CE

Complementary

The Complementary color scheme is a pair of colors which are on the opposite of each other on the color wheel.



CD7D7A



7ACACD

Split Complementary

Split-complementary colors differ from the complementary color scheme. The scheme consists of three colors, the original color and two neighbors of the complement color.



279FC4



CD7D7A



40A38D

Square

The Square scheme is like the rectangle color scheme, but the four colors are evenly spaced on the color wheel.



CD7D7A



8C995B



0FA2AC



908CC9

Rectangle

The Rectangle color scheme consists of four colors that form a rectangle on the color wheel.



CD7D7A



B38C58



0FA2AC



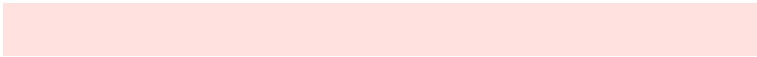
4D9ACD

Sweetspot

The Sweet Spot groups the original color and five complimentary colors.



CD7D7A



FFE2E0



CD7ACA



806E6E



000000



808080

Same Dimension

The Same Dimension uses a secret algorithm to generate beautiful new colors.



CD7D7A



FF8782



CDA67A



665C5C



A60600



260100

Inverse Universe

The Inverse Universe completely reimagines the original color for something new.



7ACACD



82FAFF



7AA1CD



5C6666



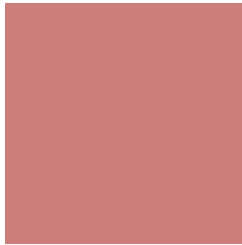
00A0A6



002526

Previews

White Background



This preview shows how the Hex color CD7D7A looks on a white background.

Color Contrast Check

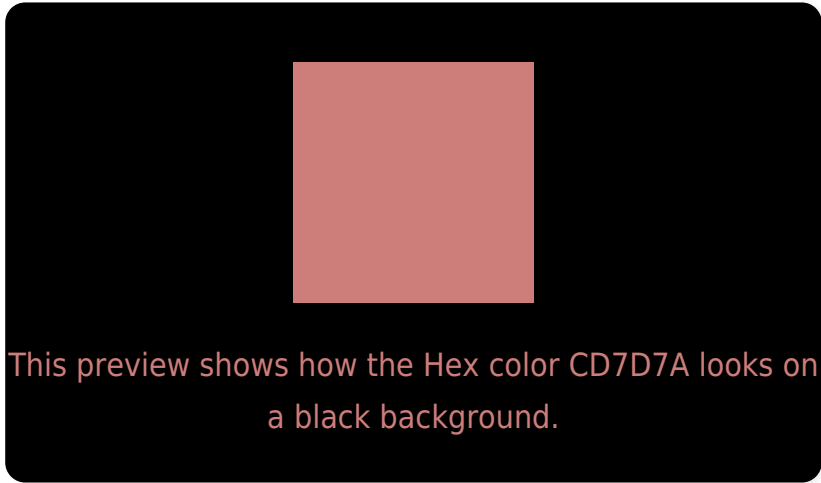
Large Text (above 18pt) WCAG AA ✓ Pass

Any Text WCAG AA × Fail

Large Text (above 18pt) WCAG AAA × Fail

Any Text WCAG AAA × Fail

Black Background



Color Contrast Check

Large Text (above 18pt) WCAG AA ✓ Pass

Any Text WCAG AA ✓ Pass

Large Text (above 18pt) WCAG AAA ✓ Pass

Any Text WCAG AAA × Fail

If you want to check with other color combinations, try the [Color Contrast Checker](#).

Hex CD7D7A Background



This preview shows how black text looks on a background with the Hex color CD7D7A.

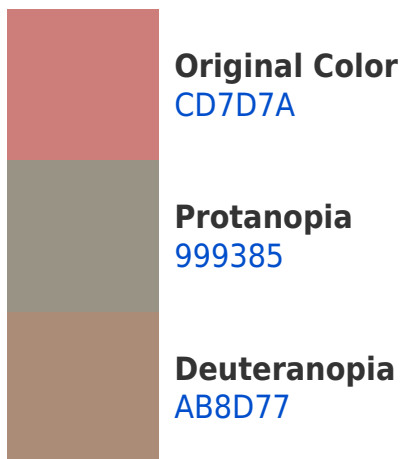


This preview shows how white text looks on a background with the Hex color CD7D7A.

Color Blindness Simulation

Color vision deficiency is a very complex topic, and I could not describe the different causes any better than Wikipedia does, so if you want to learn more, you should check out their [article about color blindness](#).

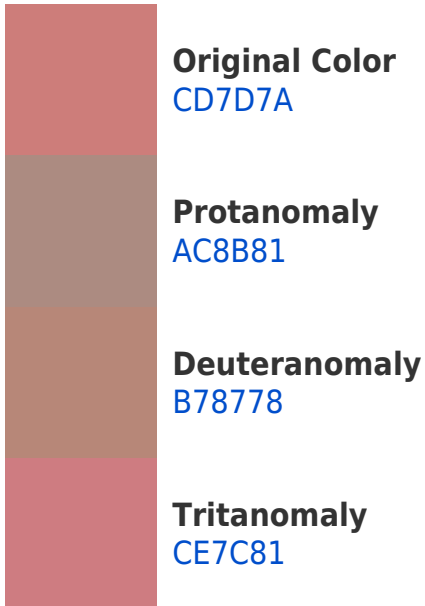
Dichromacy



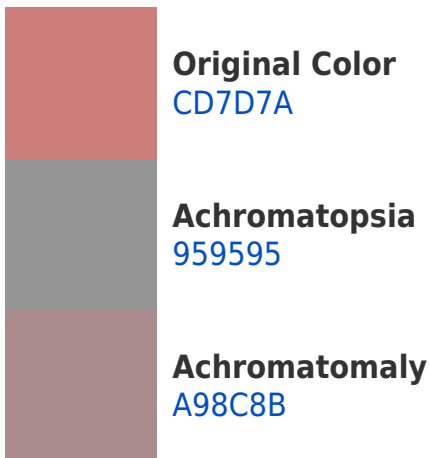


Tritanopia
CE7B85

Trichromacy



Monochromacy



CSS Examples

Text

The CSS property to change the color of the text to Hex CD7D7A is called "color". The color property can be set on classes, ids or directly on the HTML element.

This example shows how text in the color #CD7D7A looks like.

```
.text, #text, p{  
    color:#CD7D7A  
}
```

If you want to add a text shadow in that color use the text-shadow property, you can generate a text shadow directly with our [CSS Text Shadow Generator](#).

Here you see how black text with a 4 pixel #CD7D7A colored shadow looks like.

```
.shadow{ text-shadow: 4px 4px 2px #CD7D7A
}
```

Border

The CSS property to change the border of an element to Hex CD7D7A is called "border". The border property can be set on classes, ids or directly on the HTML element.

This example shows the color as border, it can be applied via the CSS property "border" or "border-color".

```
.border, #border, table{ border:4px solid
#CD7D7A }
```

If only the border color should be changed use the property `border-color`.

```
.border{ border-color:#CD7D7A }
```

If you want to add a box shadow in that color use:

Here you see how a box with a 4 pixel #CD7D7A colored shadow looks like.

```
.boxshadow{ -moz-box-shadow:4px 4px 4px  
4px #CD7D7A; -webkit-box-shadow:4px 4px  
4px 4px #CD7D7A; box-shadow:4px 4px 4px  
4px #CD7D7A }
```

Background

The CSS property to change the background color of an element to Hex CD7D7A is called "background". The background property can be set on classes, ids or directly on the HTML element.

```
.background, #background, body{  
background:#CD7D7A }
```

If only the background color should be changed can be used:

```
.background{ background-color:#CD7D7A }
```

This example shows the color as background, it is applied via the CSS property "background".

To optimize and compress your CSS code, you can use our [online CSS compressor and optimizer](#) based on csstidy. If you want to create a linear or radial gradient as background or border, check our [CSS Gradient Generator](#).

Hey! You found this booklet interesting? Support Converting Colors with the new Membership Option!

The pro membership hides all ads, plus gives you double the colors in the color bucket, and more awesome pro features!

[Learn more, Memberships starting at \\$2.50/m!](#)

**Follow me
on Twitter!**

@ConvertingColor