

Converting Colors

Hex(CD978E)

Have a look what the booklet for
Hex(CD978E) contains.

Hex(CD978E)	3
<i>Conversions</i>	4
<i>Details</i>	6
<i>Harmonies</i>	11
<i>Previews</i>	23
<i>Color Blindness Simulation</i>	26
<i>CSS Examples</i>	29

Color

Hex(CD978E)

Conversions

Conversions Part 1

Format	Color
Hex	CD978E
RGB	205, 151, 142
RGB Percent	80%, 59%, 56%
CMY	0.1961, 0.4078, 0.4431
CMYK	0.00, 0.26, 0.31, 0.20
HSL	9°, 39%, 68%
HSV	9°, 31%, 80%
XYZ	41.1259, 37.0653, 30.5779
YIQ	166.1200, 35.0730, 8.6490

Conversions

Conversions Part 2

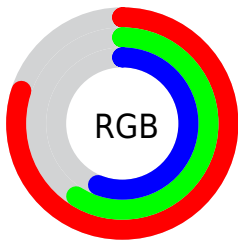
Format	Color
R _Y B	205, 153, 142
Decimal	13473678
CIE Lab	67.33, 19.01, 12.69
CIE LCh	67, 22.861, 33.727
Yxy	37.0653, 0.3781, 0.3408
Android (android.graphics.Color)	4291663758 (0xFFCD978E)
YUV	166.1200, -11.8912, 34.0978
Hunter-Lab	60.8813, 14.0362, 12.8382

Details

The Hex color **CD978E** is a light color, and the websafe version is hex **CC9999**. A complement of this color would be **8EC4CD**, and the grayscale version is **A6A6A6**.

A 20% lighter version of the original color is **FFCDC4**, and **95645C** is the 20% darker color. If you saturate the color by 10%, you get **CD857A**, and if you desaturate by 10%, it is **CDA9A3**.

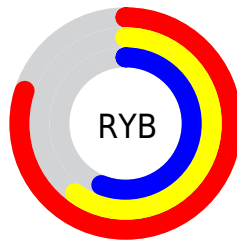
Distribution



Red (80%)

Green (59%)

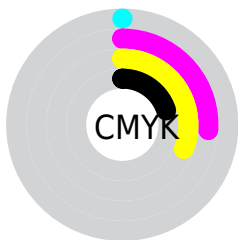
Blue (56%)



Red (80%)

Yellow (60%)

Blue (56%)

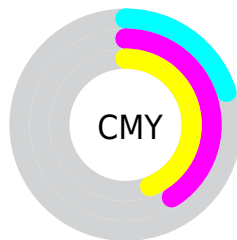


Cyan (0%)

Magenta (26%)

Yellow (31%)

Black (20%)



Cyan (20%)

Magenta (41%)

Yellow (44%)

Brightness & Saturation Gradients

These gradients show how the Hex color CD978E changes by changing the brightness by 10 percent. The first figure shows a shift by +10% for each color and the second figure -10%.

Similar to the brightness gradients but the following saturation gradients show a change of the Hex color CD978E by changing the saturation by 10% instead.

 CD978E

 CD978E

FFFFFF

 B17D74

 FFDCD4

 95645C

 FFEAE0

 7B4C44

FFFFFFC

 61342E

 471E19

 300900

 120000

 000000

 CD978E

 CD978E

 CD857A

 CDA9A3

 CD7465

 CDBAB7

 CD6251

 CDCCCC

 CD513C

 CDDDE0

 CD3F27

 CDEFF5

 CD2E13

 CDFFFF

 CD1D00

Harmonies

Analogous

The Analogous color harmony consists of three colors that are next to each other on the color wheel.



CD95A2



CD978E



C39D80

Triad

The Triadic color harmony groups three colors that are evenly spaced from another and form a triangle on the color wheel.



CD978E



83AE91



8FA5CD

Complementary

The Complementary color scheme is a pair of colors which are on the opposite of each other on the color wheel.



CD978E



8EC4CD

Split Complementary

Split-complementary colors differ from the complementary color scheme. The scheme consists of three colors, the original color and two neighbors of the complement color.



75ABC8



CD978E



6FB0A6

Square

The Square scheme is like the rectangle color scheme, but the four colors are evenly spaced on the color wheel.



CD978E



9AAA81



69AFBA



AB9EC6

Rectangle

The Rectangle color scheme consists of four colors that form a rectangle on the color wheel.



CD978E



B7A17B



69AFBA



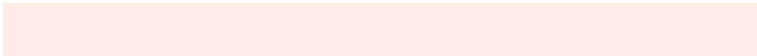
85A7CC

Sweetspot

The Sweet Spot groups the original color and five complimentary colors.



CD978E



FFEBE8



CD8EC5



807371



000000



808080

Same Dimension

The Same Dimension uses a secret algorithm to generate beautiful new colors.



CD978E



FFAEA1



CDB68E



665D5C



A61800



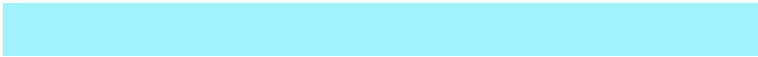
260500

Inverse Universe

The Inverse Universe completely reimagines the original color for something new.



8EC4CD



A1F2FF



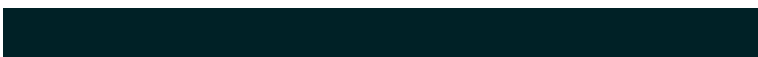
8EA5CD



5C6566



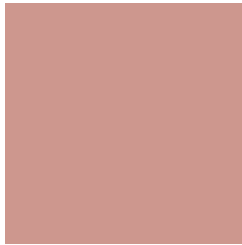
008EA6



002126

Previews

White Background



This preview shows how the Hex color CD978E looks on a white background.

Color Contrast Check

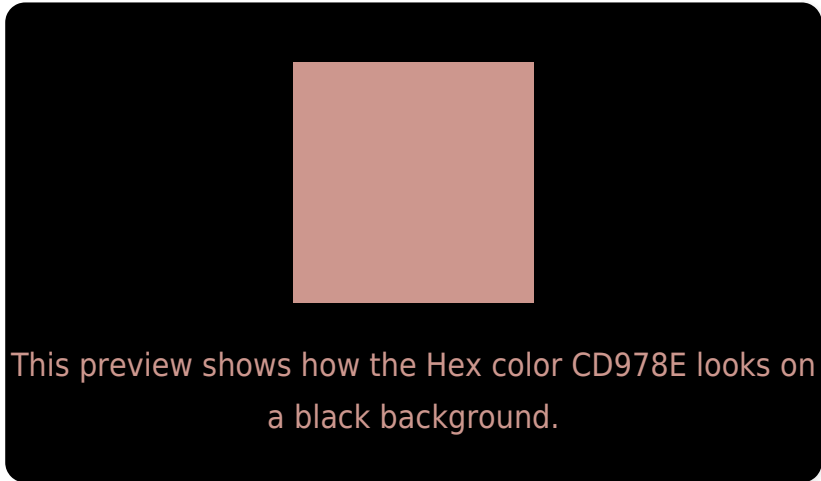
Large Text (above 18pt) WCAG AA × Fail

Any Text WCAG AA × Fail

Large Text (above 18pt) WCAG AAA × Fail

Any Text WCAG AAA × Fail

Black Background



Color Contrast Check

Large Text (above 18pt) WCAG AA ✓ Pass

Any Text WCAG AA ✓ Pass

Large Text (above 18pt) WCAG AAA ✓ Pass

Any Text WCAG AAA ✓ Pass

If you want to check with other color combinations, try the [Color Contrast Checker](#).

Hex CD978E Background



This preview shows how black text looks on a background with the Hex color CD978E.

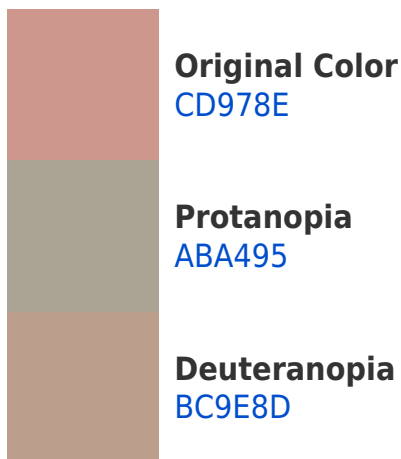


This preview shows how white text looks on a background with the Hex color CD978E.

Color Blindness Simulation

Color vision deficiency is a very complex topic, and I could not describe the different causes any better than Wikipedia does, so if you want to learn more, you should check out their [article about color blindness](#).

Dichromacy





Tritanopia
CF94A0

Trichromacy



Original Color
CD978E

Protanomaly
B79F92

Deuteranomaly
C29B8D

Tritanomaly
CE9599

Monochromacy



Original Color
CD978E

Achromatopsia
A6A6A6

Achromatomaly
B4A19D

CSS Examples

Text

The CSS property to change the color of the text to Hex CD978E is called "color". The color property can be set on classes, ids or directly on the HTML element.

This example shows how text in the color #CD978E looks like.

```
.text, #text, p{  
    color:#CD978E  
}
```

If you want to add a text shadow in that color use the text-shadow property, you can generate a text shadow directly with our [CSS Text Shadow Generator](#).

Here you see how black text with a 4 pixel #CD978E colored shadow looks like.

```
.shadow{ text-shadow: 4px 4px 2px #CD978E
}
```

Border

The CSS property to change the border of an element to Hex CD978E is called "border". The border property can be set on classes, ids or directly on the HTML element.

This example shows the color as border, it can be applied via the CSS property "border" or "border-color".

```
.border, #border, table{ border:4px solid
#CD978E }
```

If only the border color should be changed use the property `border-color`.

```
.border{ border-color:#CD978E }
```

If you want to add a box shadow in that color use:

Here you see how a box with a 4 pixel #CD978E colored shadow looks like.

```
.boxshadow{ -moz-box-shadow:4px 4px 4px  
4px #CD978E; -webkit-box-shadow:4px 4px  
4px 4px #CD978E; box-shadow:4px 4px 4px  
4px #CD978E }
```

Background

The CSS property to change the background color of an element to Hex CD978E is called "background". The background property can be set on classes, ids or directly on the HTML element.

```
.background, #background, body{  
background:#CD978E }
```

If only the background color should be changed can be used:

```
.background{ background-color:#CD978E }
```

This example shows the color as background, it is applied via the CSS property "background".

To optimize and compress your CSS code, you can use our [online CSS compressor and optimizer](#) based on csstidy. If you want to create a linear or radial gradient as background or border, check our [CSS Gradient Generator](#).

Hey! You found this booklet interesting? Support Converting Colors with the new Membership Option!

The pro membership hides all ads, plus gives you double the colors in the color bucket, and more awesome pro features!

[Learn more, Memberships starting at \\$2.50/m!](#)

**Follow me
on Twitter!**

@ConvertingColor