

Converting Colors

Hex(CD998E)

Have a look what the booklet for
Hex(CD998E) contains.

Hex(CD998E)	3
<i>Conversions</i>	4
<i>Details</i>	6
<i>Harmonies</i>	11
<i>Previews</i>	23
<i>Color Blindness Simulation</i>	26
<i>CSS Examples</i>	29

Color

Hex(CD998E)

Conversions

Conversions Part 1

Format	Color
Hex	CD998E
RGB	205, 153, 142
RGB Percent	80%, 60%, 56%
CMY	0.1961, 0.4000, 0.4431
CMYK	0.00, 0.25, 0.31, 0.20
HSL	10°, 39%, 68%
HSV	10°, 31%, 80%
XYZ	41.4506, 37.7146, 30.6861
YIQ	167.2940, 34.5230, 7.6030

Conversions

Conversions Part 2

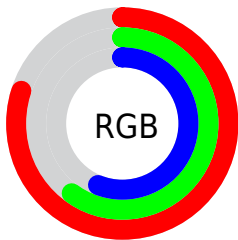
Format	Color
RYB	205, 155, 142
Decimal	13474190
CIELab	67.81, 17.92, 13.37
CIElCh	68, 22.361, 36.731
Yxy	37.7146, 0.3773, 0.3433
Android (android.graphics.Color)	4291664270 (0xFFCD998E)
YUV	167.2940, -12.4699, 33.0682
Hunter-Lab	61.4122, 13.0083, 13.3628

Details

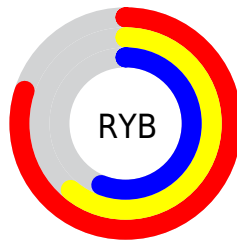
The Hex color **CD998E** is a light color, and the websafe version is hex **CC9999**. A complement of this color would be **8EC2CD**, and the grayscale version is **A7A7A7**.

A 20% lighter version of the original color is **FFD0C4**, and **95665C** is the 20% darker color. If you saturate the color by 10%, you get **CD887A**, and if you desaturate by 10%, it is **CDAAA3**.

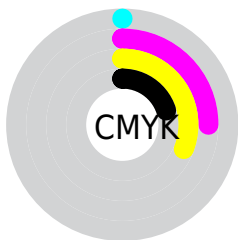
Distribution



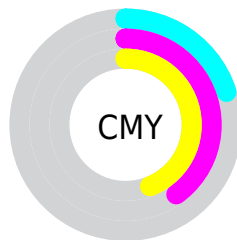
- Red (80%)
- Green (60%)
- Blue (56%)



- Red (80%)
- Yellow (61%)
- Blue (56%)



- Cyan (0%)
- Magenta (25%)
- Yellow (31%)
- Black (20%)



- Cyan (20%)
- Magenta (40%)
- Yellow (44%)

Brightness & Saturation Gradients

These gradients show how the Hex color CD998E changes by changing the brightness by 10 percent. The first figure shows a shift by +10% for each color and the second figure -10%.

Similar to the brightness gradients but the following saturation gradients show a change of the Hex color CD998E by changing the saturation by 10% instead.

 CD998E

 CD998E

FFFFFF

 B17F74

 FFD0C4

 95665C

 FFECE0

 7B4D44

FFFFFFC

 61362E

 472019

 300B00

 130000

 000000

 CD998E

 CD998E

 CD887A

 CDAAA3

 CD7765

 CDBBB7

 CD6651

 CDCCCC

 CD553C

 CDDDE0

 CD4427

 CDEEF5

 CD3313

 CDFFFF

 CD2400

Harmonies

Analogous

The Analogous color harmony consists of three colors that are next to each other on the color wheel.



CE97A1



CD998E



C29F81

Triad

The Triadic color harmony groups three colors that are evenly spaced from another and form a triangle on the color wheel.



CD998E



83AF95



93A5CD

Complementary

The Complementary color scheme is a pair of colors which are on the opposite of each other on the color wheel.



CD998E



8EC2CD

Split Complementary

Split-complementary colors differ from the complementary color scheme. The scheme consists of three colors, the original color and two neighbors of the complement color.



7AACCA



CD998E



71B1A9

Square

The Square scheme is like the rectangle color scheme, but the four colors are evenly spaced on the color wheel.



CD998E



99AB85



6CB0BD



AE9FC6

Rectangle

The Rectangle color scheme consists of four colors that form a rectangle on the color wheel.



CD998E



B6A37D



6CB0BD



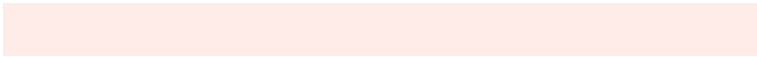
8AA8CD

Sweetspot

The Sweet Spot groups the original color and five complimentary colors.



CD998E



FFECE8



CD8EC3



807471



000000



808080

Same Dimension

The Same Dimension uses a secret algorithm to generate beautiful new colors.



CD998E



FFB1A1



CDB88E



665E5C



A61D00



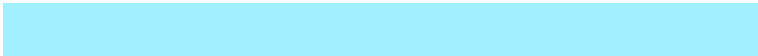
260700

Inverse Universe

The Inverse Universe completely reimagines the original color for something new.



8EC2CD



A1EFFF



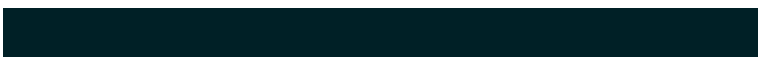
8EA3CD



5C6466



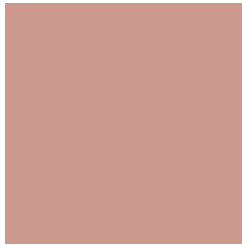
0089A6



002026

Previews

White Background



This preview shows how the Hex color CD998E looks on a white background.

Color Contrast Check

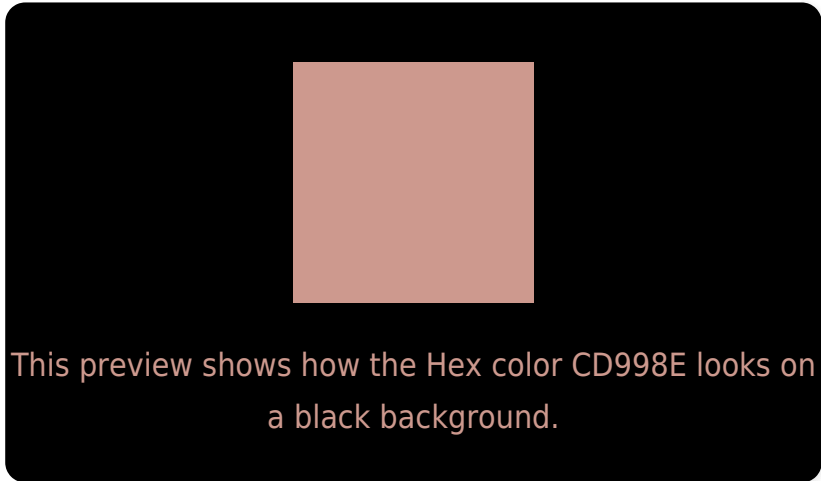
Large Text (above 18pt) WCAG AA × Fail

Any Text WCAG AA × Fail

Large Text (above 18pt) WCAG AAA × Fail

Any Text WCAG AAA × Fail

Black Background



Color Contrast Check

Large Text (above 18pt) WCAG AA ✓ Pass

Any Text WCAG AA ✓ Pass

Large Text (above 18pt) WCAG AAA ✓ Pass

Any Text WCAG AAA ✓ Pass

If you want to check with other color combinations, try the [Color Contrast Checker](#).

Hex CD998E Background



This preview shows how black text looks on a background with the Hex color CD998E.

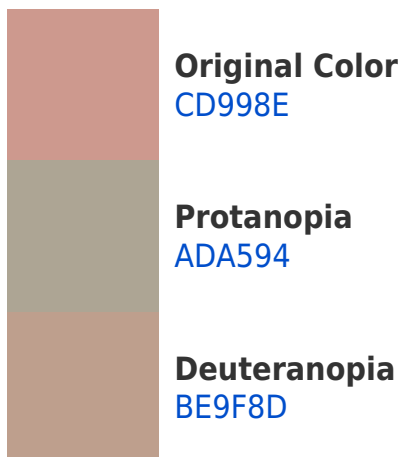


This preview shows how white text looks on a background with the Hex color CD998E.

Color Blindness Simulation

Color vision deficiency is a very complex topic, and I could not describe the different causes any better than Wikipedia does, so if you want to learn more, you should check out their [article about color blindness](#).

Dichromacy





Tritanopia
CF96A2

Trichromacy



Original Color
CD998E

Protanomaly
B9A192

Deuteranomaly
C39D8D

Tritanomaly
CE979B

Monochromacy



Original Color
CD998E

Achromatopsia
A7A7A7

Achromatomaly
B5A29E

CSS Examples

Text

The CSS property to change the color of the text to Hex CD998E is called "color". The color property can be set on classes, ids or directly on the HTML element.

This example shows how text in the color #CD998E looks like.

```
.text, #text, p{  
    color:#CD998E  
}
```

If you want to add a text shadow in that color use the text-shadow property, you can generate a text shadow directly with our [CSS Text Shadow Generator](#).

Here you see how black text with a 4 pixel #CD998E colored shadow looks like.

```
.shadow{ text-shadow: 4px 4px 2px #CD998E
}
```

Border

The CSS property to change the border of an element to Hex CD998E is called "border". The border property can be set on classes, ids or directly on the HTML element.

This example shows the color as border, it can be applied via the CSS property "border" or "border-color".

```
.border, #border, table{ border:4px solid
#CD998E }
```

If only the border color should be changed use the property `border-color`.

```
.border{ border-color:#CD998E }
```

If you want to add a box shadow in that color use:

Here you see how a box with a 4 pixel #CD998E colored shadow looks like.

```
.boxshadow{ -moz-box-shadow:4px 4px 4px  
4px #CD998E; -webkit-box-shadow:4px 4px  
4px 4px #CD998E; box-shadow:4px 4px 4px  
4px #CD998E }
```

Background

The CSS property to change the background color of an element to Hex CD998E is called "background". The background property can be set on classes, ids or directly on the HTML element.

```
.background, #background, body{  
background:#CD998E }
```

If only the background color should be changed can be used:

```
.background{ background-color:#CD998E }
```

This example shows the color as background, it is applied via the CSS property "background".

To optimize and compress your CSS code, you can use our [online CSS compressor and optimizer](#) based on csstidy. If you want to create a linear or radial gradient as background or border, check our [CSS Gradient Generator](#).

Hey! You found this booklet interesting? Support Converting Colors with the new Membership Option!

The pro membership hides all ads, plus gives you double the colors in the color bucket, and more awesome pro features!

[Learn more, Memberships starting at \\$2.50/m!](#)

**Follow me
on Twitter!**

@ConvertingColor