

# Converting Colors

Hex(CD9994)

Have a look what the booklet for  
Hex(CD9994) contains.

<b>Hex(CD9994)</b> .....	3
<b><i>Conversions</i></b> .....	4
<b><i>Details</i></b> .....	6
<b><i>Harmonies</i></b> .....	11
<b><i>Previews</i></b> .....	23
<b><i>Color Blindness Simulation</i></b> .....	26
<b><i>CSS Examples</i></b> .....	29

**Color**

**Hex(CD9994)**

# Conversions

## Conversions Part 1

Format	Color
Hex	CD9994
RGB	205, 153, 148
RGB Percent	80%, 60%, 58%
CMY	0.1961, 0.4000, 0.4196
CMYK	0.00, 0.25, 0.28, 0.20
HSL	5°, 36%, 69%
HSV	5°, 28%, 80%
XYZ	41.9134, 37.8997, 33.1233
YIQ	167.9780, 32.5970, 9.4690

# Conversions

## Conversions Part 2

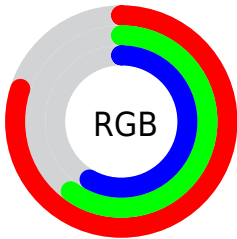
Format	Color
R <sub>Y</sub> B	205, 153, 148
Decimal	13474196
CIE Lab	67.95, 18.74, 10.23
CIE LCh	68, 21.346, 28.623
Yxy	37.8997, 0.3711, 0.3356
Android (android.graphics.Color)	4291664276 (0xFFCD9994)
YUV	167.9780, -9.8492, 32.4683
Hunter-Lab	61.5627, 13.7922, 11.1935

# Details

The Hex color **CD9994** is a light color, and the websafe version is hex **CC9999**. A complement of this color would be **94C8CD**, and the grayscale version is **A8A8A8**.

A 20% lighter version of the original color is **FFD0CA**, and **966661** is the 20% darker color. If you saturate the color by 10%, you get **CD8680**, and if you desaturate by 10%, it is **CDACA9**.

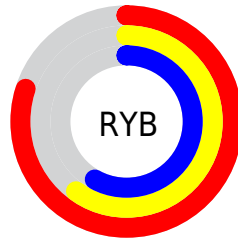
# Distribution



Red (80%)

Green (60%)

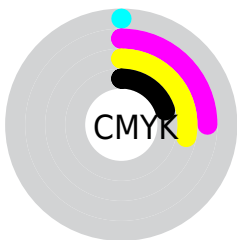
Blue (58%)



Red (80%)

Yellow (60%)

Blue (58%)

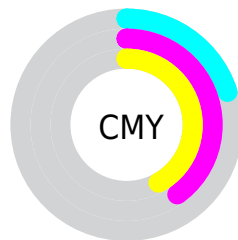


Cyan (0%)

Magenta (25%)

Yellow (28%)

Black (20%)



Cyan (20%)

Magenta (40%)

Yellow (42%)

# Brightness & Saturation Gradients

These gradients show how the Hex color CD9994 changes by changing the brightness by 10 percent. The first figure shows a shift by +10% for each color and the second figure -10%.

Similar to the brightness gradients but the following saturation gradients show a change of the Hex color CD9994 by changing the saturation by 10% instead.



 CD9994

 CD9994

FFFFFF

 B17F7A

 FFD0CA

 966661

 FFECE6

 7B4D4A

 613633

 48201E

 300B05

 160000

 000000

 CD9994

 CD9994

 CD8680

 CDACA9

 CD746B

 CDBEBD

 CD6157

 CDD1D2

 CD4E42

 CDE4E6

 CD3B2E

 CDF7FB

 CD2919

 CDFFFF

 CD1605

 CD1200

# Harmonies

## Analogous

The Analogous color harmony consists of three colors that are next to each other on the color wheel.



CB98A7



CD9994



C59E85

# Triad

The Triadic color harmony groups three colors that are evenly spaced from another and form a triangle on the color wheel.



CD9994



8AAE91



8EA8CC

# Complementary

The Complementary color scheme is a pair of colors which are on the opposite of each other on the color wheel.



CD9994



94C8CD

# Split Complementary

Split-complementary colors differ from the complementary color scheme. The scheme consists of three colors, the original color and two neighbors of the complement color.



78ADC6



CD9994



78B1A4

# Square

The Square scheme is like the rectangle color scheme, but the four colors are evenly spaced on the color wheel.



CD9994



A0AA84



6FB0B7



A8A1C7

# Rectangle

The Rectangle color scheme consists of four colors that form a rectangle on the color wheel.



CD9994



BBA280



6FB0B7



85AACB

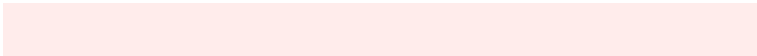


# Sweetspot

The Sweet Spot groups the original color and five complimentary colors.



CD9994



FFECEB



CD94C8



807473



000000



808080



# Same Dimension

The Same Dimension uses a secret algorithm to generate beautiful new colors.



CD9994



FFB2AB



CDB594



665D5C



A60F00



260300



# Inverse Universe

The Inverse Universe completely reimagines the original color for something new.



94C8CD



ABF8FF



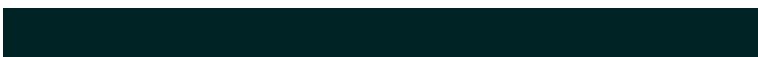
94ACCD



5C6566



0097A6

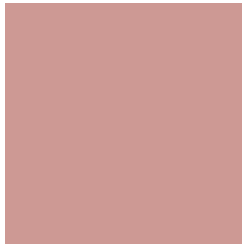


002326



# Previews

## White Background



This preview shows how the Hex color CD9994 looks on a white background.

## Color Contrast Check

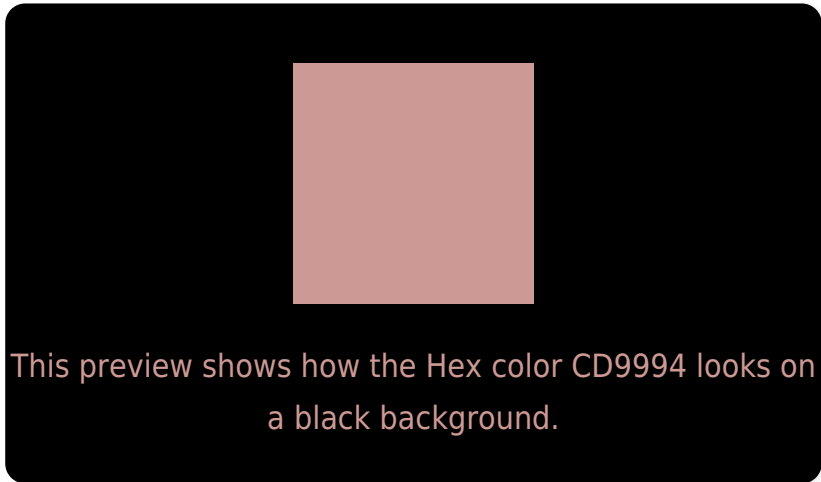
Large Text (above 18pt) WCAG AA × Fail

Any Text WCAG AA × Fail

Large Text (above 18pt) WCAG AAA × Fail

Any Text WCAG AAA × Fail

# Black Background



## Color Contrast Check

Large Text (above 18pt) WCAG AA ✓ Pass

Any Text WCAG AA ✓ Pass

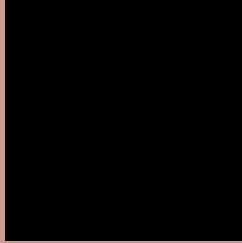
Large Text (above 18pt) WCAG AAA ✓ Pass

Any Text WCAG AAA ✓ Pass

If you want to check with other color combinations, try the [Color Contrast Checker](#).



## Hex CD9994 Background



This preview shows how black text looks on a background with the Hex color CD9994.

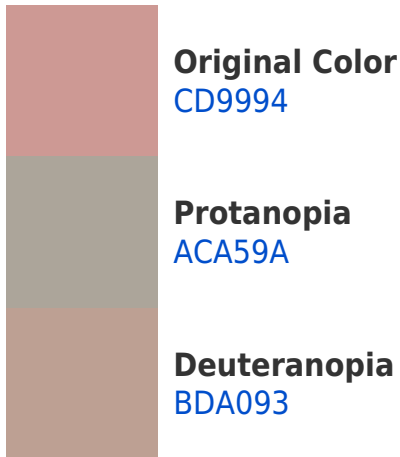


This preview shows how white text looks on a background with the Hex color CD9994.

# Color Blindness Simulation

Color vision deficiency is a very complex topic, and I could not describe the different causes any better than Wikipedia does, so if you want to learn more, you should check out their [article about color blindness](#).

## Dichromacy





**Tritanopia**  
CF97A2

# Trichromacy



**Original Color**  
CD9994

**Protanomaly**  
B8A198

**Deuteranomaly**  
C39D93

**Tritanomaly**  
CE989D

# Monochromacy



**Original Color**  
CD9994

**Achromatopsia**  
A8A8A8

**Achromatomaly**  
B5A3A1

# CSS Examples

## Text

The CSS property to change the color of the text to Hex CD9994 is called "color". The color property can be set on classes, ids or directly on the HTML element.

This example shows how text in the color #CD9994 looks like.

```
.text, #text, p{  
    color:#CD9994  
}
```

If you want to add a text shadow in that color use the text-shadow property, you can generate a text shadow directly with our [CSS Text Shadow Generator](#).

Here you see how black text with a 4 pixel #CD9994 colored shadow looks like.

```
.shadow{ text-shadow: 4px 4px 2px #CD9994
}
```

## Border

The CSS property to change the border of an element to Hex CD9994 is called "border". The border property can be set on classes, ids or directly on the HTML element.

This example shows the color as border, it can be applied via the CSS property "border" or "border-color".

```
.border, #border, table{ border:4px solid
#CD9994 }
```

If only the border color should be changed use the property `border-color`.

```
.border{ border-color:#CD9994 }
```

If you want to add a box shadow in that color use:

Here you see how a box with a 4 pixel #CD9994 colored shadow looks like.

```
.boxshadow{ -moz-box-shadow:4px 4px 4px  
4px #CD9994; -webkit-box-shadow:4px 4px  
4px 4px #CD9994; box-shadow:4px 4px 4px  
4px #CD9994 }
```

# Background

The CSS property to change the background color of an element to Hex CD9994 is called "background". The background property can be set on classes, ids or directly on the HTML element.

```
.background, #background, body{  
background:#CD9994 }
```

If only the background color should be changed can be used:

```
.background{ background-color:#CD9994 }
```

This example shows the color as background, it is applied via the CSS property "background".

To optimize and compress your CSS code, you can use our [online CSS compressor and optimizer](#) based on csstidy. If you want to create a linear or radial gradient as background or border, check our [CSS Gradient Generator](#).



Hey! You found this booklet interesting? Support Converting Colors with the new Membership Option!

The pro membership hides all ads, plus gives you double the colors in the color bucket, and more awesome pro features!

**[Learn more, Memberships starting at \\$2.50/m!](#)**

**Follow me  
on Twitter!**

@ConvertingColor