

# Converting Colors

Hex(CDA491)

Have a look what the booklet for  
Hex(CDA491) contains.

<b>Hex(CDA491)</b> .....	3
<i><b>Conversions</b></i> .....	4
<i><b>Details</b></i> .....	6
<i><b>Harmonies</b></i> .....	11
<i><b>Previews</b></i> .....	23
<i><b>Color Blindness Simulation</b></i> .....	26
<i><b>CSS Examples</b></i> .....	29

# **Color**

**Hex(CDA491)**

# Conversions

## Conversions Part 1

Format	Color
Hex	CDA491
RGB	205, 164, 145
RGB Percent	80%, 64%, 57%
CMY	0.1961, 0.3569, 0.4314
CMYK	0.00, 0.20, 0.29, 0.20
HSL	19°, 38%, 69%
HSV	19°, 29%, 80%
XYZ	43.5631, 41.5744, 32.5167
YIQ	174.0930, 30.5350, 2.7830

# Conversions

## Conversions Part 2

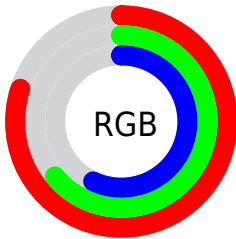
<b>Format</b>	<b>Color</b>
<b>R<sub>YB</sub></b>	205, 173, 145
Decimal	13477009
CIE <sub>Lab</sub>	70.58, 12.33, 15.59
CIE <sub>LCh</sub>	71, 19.874, 51.651
Yxy	41.5744, 0.3703, 0.3534
Android (android.graphics.Color)	4291667089 (0xFFCDA491)
YUV	174.0930, -14.3428, 27.1054
Hunter-Lab	64.4782, 7.7623, 15.2345

# Details

The Hex color **CDA491** is a light color, and the websafe version is hex **CC9999**. A complement of this color would be **91BACD**, and the grayscale version is **AEAEAE**.

A 20% lighter version of the original color is **FFDBC7**, and **96705F** is the 20% darker color. If you saturate the color by 10%, you get **CD967C**, and if you desaturate by 10%, it is **CDB2A6**.

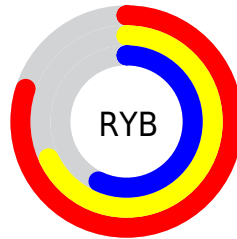
# Distribution



Red (80%)

Green (64%)

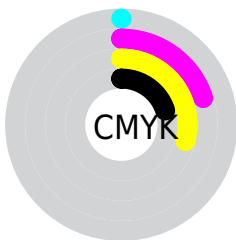
Blue (57%)



Red (80%)

Yellow (68%)

Blue (57%)

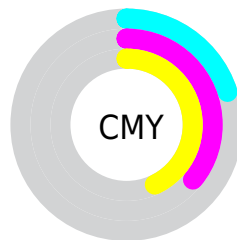


Cyan (0%)

Magenta (20%)

Yellow (29%)

Black (20%)



Cyan (20%)

Magenta (36%)

Yellow (43%)

# Brightness & Saturation Gradients

These gradients show how the Hex color CDA491 changes by changing the brightness by 10 percent. The first figure shows a shift by +10% for each color and the second figure -10%.

Similar to the brightness gradients but the following saturation gradients show a change of the Hex color CDA491 by changing the saturation by 10% instead.



 CDA491

 CDA491

FFFFFF

 B18A77

 FFDBC7

 96705F

 FFF8E3

 7B5847

 614030

 482A1B

 311501

 1B0000

 000000

 CDA491

 CDA491

CD967C

CDB2A6

CD8868

CDC0BA

CD7A53

CDCECF

CD6C3F

CDDCE3

CD5E2A

CDEAF8

CD5016

CDF8FF

CD4201

CDFFFF

CD4100

# Harmonies

## Analogous

The Analogous color harmony consists of three colors that are next to each other on the color wheel.



D2A0A0



CDA491



BFAA89

# Triad

The Triadic color harmony groups three colors that are evenly spaced from another and form a triangle on the color wheel.



CDA491



86B7A7



A9AACE

# Complementary

The Complementary color scheme is a pair of colors which are on the opposite of each other on the color wheel.



CDA491



91BACD

# Split Complementary

Split-complementary colors differ from the complementary color scheme. The scheme consists of three colors, the original color and two neighbors of the complement color.



91B0D0



CDA491



7CB7B9

# Square

The Square scheme is like the rectangle color scheme, but the four colors are evenly spaced on the color wheel.



CDA491



98B496



80B4C8



BFA4C3

# Rectangle

The Rectangle color scheme consists of four colors that form a rectangle on the color wheel.



CDA491



B3AE89



80B4C8



A1ACD0



# Sweetspot

The Sweet Spot groups the original color and five complimentary colors.



CDA491



FFEFE8



CD91BA



807671



000000



808080



# Same Dimension

The Same Dimension uses a secret algorithm to generate beautiful new colors.



CDA491



FFC2A6



CDC291



665F5C



A63400



260C00

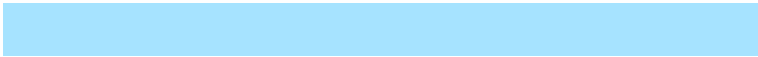


# Inverse Universe

The Inverse Universe completely reimagines the original color for something new.



91BACD



A6E3FF



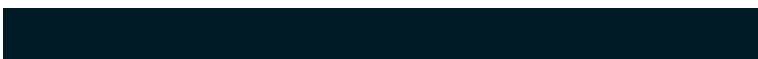
919CCD



5C6366



0071A6

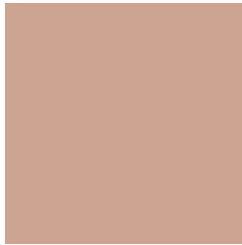


001A26



# Previews

## White Background



This preview shows how the Hex color CDA491 looks on a white background.

## Color Contrast Check

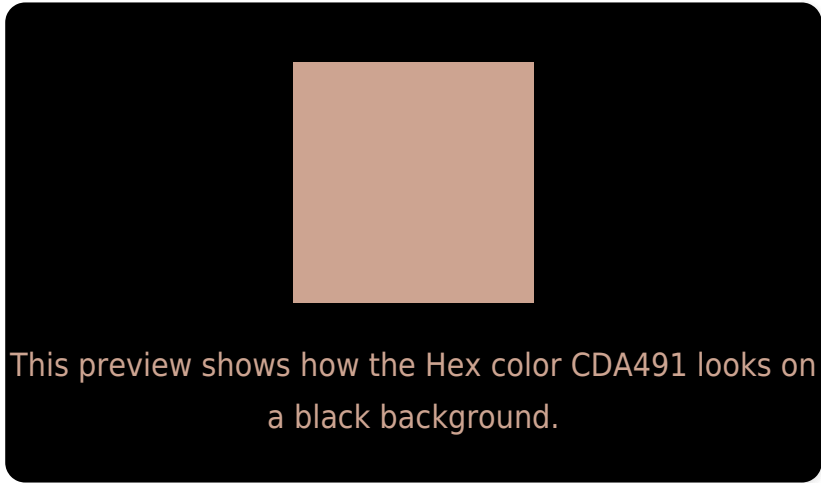
Large Text (above 18pt) WCAG AA × Fail

Any Text WCAG AA × Fail

Large Text (above 18pt) WCAG AAA × Fail

Any Text WCAG AAA × Fail

# Black Background



## Color Contrast Check

Large Text (above 18pt) WCAG AA ✓ Pass

Any Text WCAG AA ✓ Pass

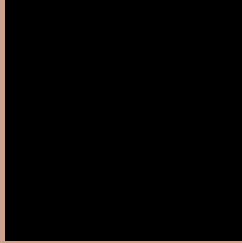
Large Text (above 18pt) WCAG AAA ✓ Pass

Any Text WCAG AAA ✓ Pass

If you want to check with other color combinations, try the [Color Contrast Checker](#).



## Hex CDA491 Background



This preview shows how black text looks on a background with the Hex color CDA491.

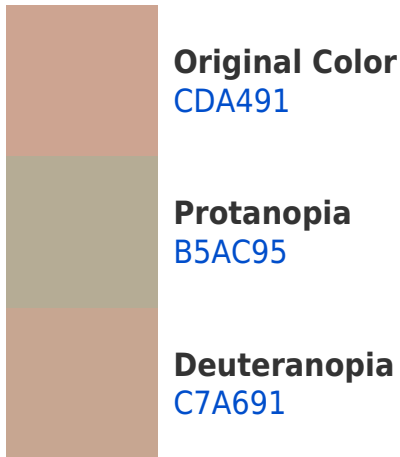


This preview shows how white text looks on a background with the Hex color CDA491.

# Color Blindness Simulation

Color vision deficiency is a very complex topic, and I could not describe the different causes any better than Wikipedia does, so if you want to learn more, you should check out their [article about color blindness](#).

## Dichromacy





# Trichromacy



**Original Color**  
CDA491

**Protanomaly**  
BEA994

**Deuteranomaly**  
C9A591

**Tritanomaly**  
CFA1A2

# Monochromacy



**Original Color**  
CDA491

**Achromatopsia**  
AEAEAE

**Achromatomaly**  
B9AAA3

# CSS Examples

## Text

The CSS property to change the color of the text to Hex CDA491 is called "color". The color property can be set on classes, ids or directly on the HTML element.

This example shows how text in the color #CDA491 looks like.

```
.text, #text, p{  
    color:#CDA491  
}
```

If you want to add a text shadow in that color use the text-shadow property, you can generate a text shadow directly with our [CSS Text Shadow Generator](#).

Here you see how black text with a 4 pixel #CDA491 colored shadow looks like.

```
.shadow{ text-shadow: 4px 4px 2px #CDA491
}
```

## Border

The CSS property to change the border of an element to Hex CDA491 is called "border". The border property can be set on classes, ids or directly on the HTML element.

This example shows the color as border, it can be applied via the CSS property "border" or "border-color".

```
.border, #border, table{ border:4px solid
#CDA491 }
```

If only the border color should be changed use the property `border-color`.

```
.border{ border-color:#CDA491 }
```

If you want to add a box shadow in that color use:

Here you see how a box with a 4 pixel #CDA491 colored shadow looks like.

```
.boxshadow{ -moz-box-shadow:4px 4px 4px  
4px #CDA491; -webkit-box-shadow:4px 4px  
4px 4px #CDA491; box-shadow:4px 4px 4px  
4px #CDA491 }
```

# Background

The CSS property to change the background color of an element to Hex CDA491 is called "background". The background property can be set on classes, ids or directly on the HTML element.

```
.background, #background, body{  
background:#CDA491 }
```

If only the background color should be changed can be used:

```
.background{ background-color:#CDA491 }
```

This example shows the color as background, it is applied via the CSS property "background".

To optimize and compress your CSS code, you can use our [online CSS compressor and optimizer](#) based on csstidy. If you want to create a linear or radial gradient as background or border, check our [CSS Gradient Generator](#).



Hey! You found this booklet interesting? Support Converting Colors with the new Membership Option!

The pro membership hides all ads, plus gives you double the colors in the color bucket, and more awesome pro features!

**[Learn more, Memberships starting at \\$2.50/m!](#)**

**Follow me  
on Twitter!**

@ConvertingColor