

# Converting Colors

Hex(CDA8A8)

Have a look what the booklet for  
Hex(CDA8A8) contains.

<b>Hex(CDA8A8)</b> .....	3
<i><b>Conversions</b></i> .....	4
<i><b>Details</b></i> .....	6
<i><b>Harmonies</b></i> .....	11
<i><b>Previews</b></i> .....	23
<i><b>Color Blindness Simulation</b></i> .....	26
<i><b>CSS Examples</b></i> .....	29

# **Color**

**Hex(CDA8A8)**

# Conversions

## Conversions Part 1

Format	Color
Hex	CDA8A8
RGB	205, 168, 168
RGB Percent	80%, 66%, 66%
CMY	0.1961, 0.3412, 0.3412
CMYK	0.00, 0.18, 0.18, 0.20
HSL	0°, 27%, 73%
HSV	0°, 18%, 80%
XYZ	46.2474, 43.8116, 43.0648
YIQ	179.0630, 22.0520, 7.8440

# Conversions

## Conversions Part 2

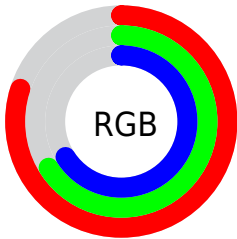
Format	Color
R <sub>Y</sub> B	205, 168, 168
Decimal	13478056
CIE Lab	72.10, 13.51, 5.09
CIE LCh	72, 14.442, 20.647
Yxy	43.8116, 0.3474, 0.3291
Android (android.graphics.Color)	4291668136 (0xFFCDA8A8)
YUV	179.0630, -5.4541, 22.7467
Hunter-Lab	66.1903, 8.8855, 7.7579

# Details

The Hex color **CDA8A8** is a light color, and the websafe version is hex **CC9999**. A complement of this color would be **A8CDCD**, and the grayscale version is **B3B3B3**.

A 20% lighter version of the original color is **FFDFDF**, and **967474** is the 20% darker color. If you saturate the color by 10%, you get **CD9494**, and if you desaturate by 10%, it is **CDBCBC**.

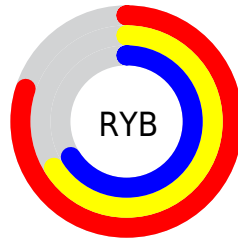
# Distribution



Red (80%)

Green (66%)

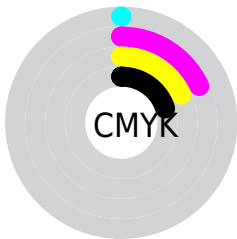
Blue (66%)



Red (80%)

Yellow (66%)

Blue (66%)

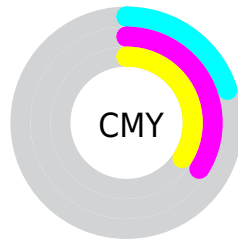


Cyan (0%)

Magenta (18%)

Yellow (18%)

Black (20%)



Cyan (20%)

Magenta (34%)

Yellow (34%)

# Brightness & Saturation Gradients

These gradients show how the Hex color CDA8A8 changes by changing the brightness by 10 percent. The first figure shows a shift by +10% for each color and the second figure -10%.

Similar to the brightness gradients but the following saturation gradients show a change of the Hex color CDA8A8 by changing the saturation by 10% instead.





CDA8A8



CDA8A8

FFFFFF



B18E8E



FFDFDF



967474



FFCFCF



7C5B5C



634444



4A2D2E



331819



200000



000000



CDA8A8



CDA8A8

 CD9494

 CDBCBC

 CD7F7F

 CDD1D1

 CD6B6B

 CDE5E5

 CD5656

 CDFAFA

 CD4141

 CDFFFF

 CD2D2D

 CD1818

 CD0404

 CD0000

# Harmonies

## Analogous

The Analogous color harmony consists of three colors that are next to each other on the color wheel.



C9A8B5



CDA8A8



C9AA9D

# Triad

The Triadic color harmony groups three colors that are evenly spaced from another and form a triangle on the color wheel.



CDA8A8



A2B6A0



9EB3CA

# Complementary

The Complementary color scheme is a pair of colors which are on the opposite of each other on the color wheel.



CDA8A8



A8CDCD

# Split Complementary

Split-complementary colors differ from the complementary color scheme. The scheme consists of three colors, the original color and two neighbors of the complement color.



92B7C5



CDA8A8



95B8AC

# Square

The Square scheme is like the rectangle color scheme, but the four colors are evenly spaced on the color wheel.



CDA8A8



B2B398



8FB8BA



AEAFC9

# Rectangle

The Rectangle color scheme consists of four colors that form a rectangle on the color wheel.



CDA8A8



C3AD98



8FB8BA



99B4C9



# Sweetspot

The Sweet Spot groups the original color and five complimentary colors.



CDA8A8



FFF2F2



CDA8CD



807878



000000



808080



# Same Dimension

The Same Dimension uses a secret algorithm to generate beautiful new colors.



CDA8A8



FFC7C7



CDBBA8



665C5C



A60000



260000

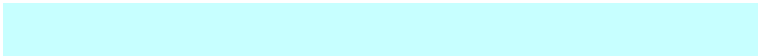


# Inverse Universe

The Inverse Universe completely reimagines the original color for something new.



A8CD CD



C7FF FF



A8BB CD



5C66 66



00A6 A6

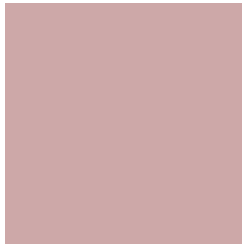


0026 26



# Previews

## White Background



This preview shows how the Hex color CDA8A8 looks on a white background.

## Color Contrast Check

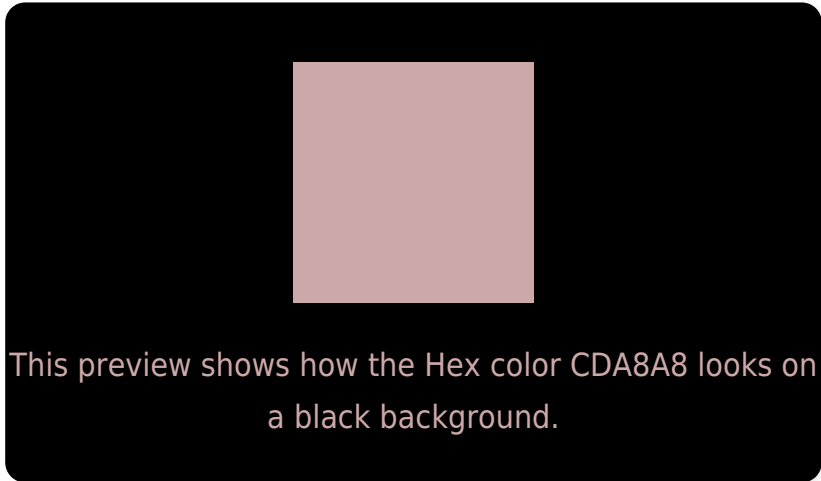
Large Text (above 18pt) WCAG AA × Fail

Any Text WCAG AA × Fail

Large Text (above 18pt) WCAG AAA × Fail

Any Text WCAG AAA × Fail

# Black Background



## Color Contrast Check

Large Text (above 18pt) WCAG AA ✓ Pass

Any Text WCAG AA ✓ Pass

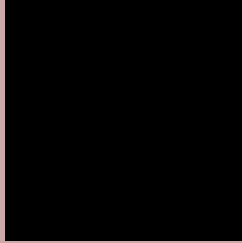
Large Text (above 18pt) WCAG AAA ✓ Pass

Any Text WCAG AAA ✓ Pass

If you want to check with other color combinations, try the [Color Contrast Checker](#).



## Hex CDA8A8 Background



This preview shows how black text looks on a background with the Hex color CDA8A8.

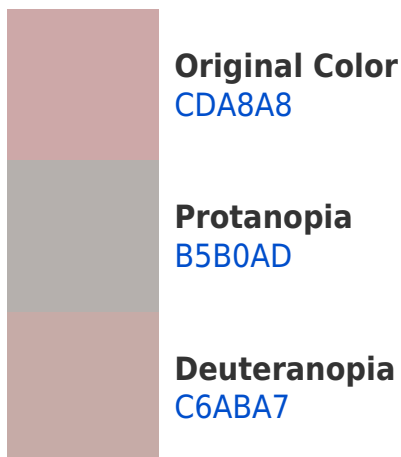


This preview shows how white text looks on a background with the Hex color CDA8A8.

# Color Blindness Simulation

Color vision deficiency is a very complex topic, and I could not describe the different causes any better than Wikipedia does, so if you want to learn more, you should check out their [article about color blindness](#).

## Dichromacy





**Tritanopia**  
CEA6B3

# Trichromacy



**Original Color**  
CDA8A8

**Protanomaly**  
BEADAB

**Deuteranomaly**  
C9AAA7

**Tritanomaly**  
CEA7AF

# Monochromacy



**Original Color**  
CDA8A8

**Achromatopsia**  
B3B3B3

**Achromatomaly**  
BCAFAF

# CSS Examples

## Text

The CSS property to change the color of the text to Hex CDA8A8 is called "color". The color property can be set on classes, ids or directly on the HTML element.

This example shows how text in the color #CDA8A8 looks like.

```
.text, #text, p{  
    color:#CDA8A8  
}
```

If you want to add a text shadow in that color use the text-shadow property, you can generate a text shadow directly with our [CSS Text Shadow Generator](#).

Here you see how black text with a 4 pixel #CDA8A8 colored shadow looks like.

```
.shadow{ text-shadow: 4px 4px 2px #CDA8A8
}
```

## Border

The CSS property to change the border of an element to Hex CDA8A8 is called "border". The border property can be set on classes, ids or directly on the HTML element.

This example shows the color as border, it can be applied via the CSS property "border" or "border-color".

```
.border, #border, table{ border:4px solid
#CDA8A8 }
```

If only the border color should be changed use the property `border-color`.

```
.border{ border-color:#CDA8A8 }
```

If you want to add a box shadow in that color use:

Here you see how a box with a 4 pixel #CDA8A8 colored shadow looks like.

```
.boxshadow{ -moz-box-shadow:4px 4px 4px  
4px #CDA8A8; -webkit-box-shadow:4px 4px  
4px 4px #CDA8A8; box-shadow:4px 4px 4px  
4px #CDA8A8 }
```

# Background

The CSS property to change the background color of an element to Hex CDA8A8 is called "background". The background property can be set on classes, ids or directly on the HTML element.

```
.background, #background, body{  
background:#CDA8A8 }
```

If only the background color should be changed can be used:

```
.background{ background-color:#CDA8A8 }
```

This example shows the color as background, it is applied via the CSS property "background".

To optimize and compress your CSS code, you can use our [online CSS compressor and optimizer](#) based on csstidy. If you want to create a linear or radial gradient as background or border, check our [CSS Gradient Generator](#).



Hey! You found this booklet interesting? Support Converting Colors with the new Membership Option!

The pro membership hides all ads, plus gives you double the colors in the color bucket, and more awesome pro features!

**[Learn more, Memberships starting at \\$2.50/m!](#)**

**Follow me  
on Twitter!**

@ConvertingColor