

# Converting Colors

Hex(CDAAA9)

Have a look what the booklet for  
Hex(CDAAA9) contains.

<b>Hex(CDAAA9)</b> .....	3
<i><b>Conversions</b></i> .....	4
<i><b>Details</b></i> .....	6
<i><b>Harmonies</b></i> .....	11
<i><b>Previews</b></i> .....	23
<i><b>Color Blindness Simulation</b></i> .....	26
<i><b>CSS Examples</b></i> .....	29

# **Color**

**Hex(CDAAA9)**

# Conversions

## Conversions Part 1

Format	Color
Hex	CDAAA9
RGB	205, 170, 169
RGB Percent	80%, 67%, 66%
CMY	0.1961, 0.3333, 0.3373
CMYK	0.00, 0.17, 0.18, 0.20
HSL	2°, 26%, 73%
HSV	2°, 18%, 80%
XYZ	46.7130, 44.5932, 43.6814
YIQ	180.3510, 21.1810, 7.1090

# Conversions

## Conversions Part 2

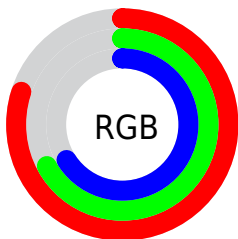
Format	Color
RYP	205, 170, 169
Decimal	13478569
CIELab	72.62, 12.58, 5.29
CIElCh	73, 13.652, 22.811
Yxy	44.5932, 0.3461, 0.3304
Android (android.graphics.Color)	4291668649 (0xFFCDAAA9)
YUV	180.3510, -5.5960, 21.6172
Hunter-Lab	66.7781, 8.0036, 7.9614

# Details

The Hex color **CDAAA9** is a light color, and the websafe version is hex **CC9999**. A complement of this color would be **A9CCCD**, and the grayscale version is **B4B4B4**.

A 20% lighter version of the original color is **FFE1E0**, and **967675** is the 20% darker color. If you saturate the color by 10%, you get **CD9695**, and if you desaturate by 10%, it is **CDBEBE**.

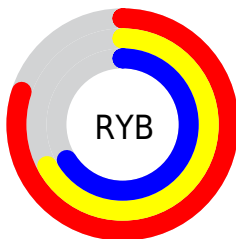
# Distribution



Red (80%)

Green (67%)

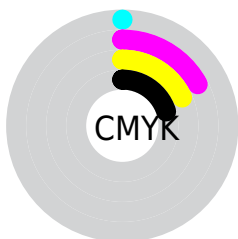
Blue (66%)



Red (80%)

Yellow (67%)

Blue (66%)

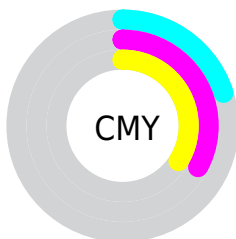


Cyan (0%)

Magenta (17%)

Yellow (18%)

Black (20%)



Cyan (20%)

Magenta (33%)

Yellow (34%)

# Brightness & Saturation Gradients

These gradients show how the Hex color CDAAA9 changes by changing the brightness by 10 percent. The first figure shows a shift by +10% for each color and the second figure -10%.

Similar to the brightness gradients but the following saturation gradients show a change of the Hex color CDAAA9 by changing the saturation by 10% instead.





CDAAA9



CDAAA9

FFFFFF



B18F8F



FFE1E0



967675



FFFEFD



7C5D5C



634545



4A2F2F



331A1A



200000



000000



CDAAA9



CDAAA9

 CD9695

 CDBEBE

 CD8280

 CDD2D2

 CD6E6B

 CDE6E6

 CD5A57

 CDFAFB

 CD4642

 CDFFFF

 CD322E

 CD1E1A

 CD0B05

 CD0600

# Harmonies

## Analogous

The Analogous color harmony consists of three colors that are next to each other on the color wheel.



CAAAB6



CDAAA9



C9AC9F

# Triad

The Triadic color harmony groups three colors that are evenly spaced from another and form a triangle on the color wheel.



CDAAA9



A4B8A3



A1B4CB

# Complementary

The Complementary color scheme is a pair of colors which are on the opposite of each other on the color wheel.



CDAAA9



A9CCCD

# Split Complementary

Split-complementary colors differ from the complementary color scheme. The scheme consists of three colors, the original color and two neighbors of the complement color.



96B8C6



CDAAA9



98B9AF

# Square

The Square scheme is like the rectangle color scheme, but the four colors are evenly spaced on the color wheel.



CDAAA9



B2B49B



92B9BB



B1B0C9

# Rectangle

The Rectangle color scheme consists of four colors that form a rectangle on the color wheel.



CDAAA9



C3AF9B



92B9BB



9DB5CA



# Sweetspot

The Sweet Spot groups the original color and five complimentary colors.



CDAAA9



FFF3F2



CDA9CC



807878



000000



808080



# Same Dimension

The Same Dimension uses a secret algorithm to generate beautiful new colors.



CDAAA9



FFCBC9



CDBCA9



665C5C



A60500



260100



# Inverse Universe

The Inverse Universe completely reimagines the original color for something new.



A9CCCD



C9FEFF



A9BACD



5C6666



00A1A6

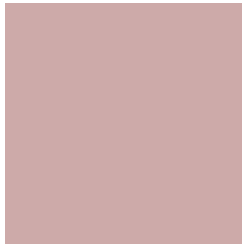


002526



# Previews

## White Background



This preview shows how the Hex color CDAAA9 looks on a white background.

## Color Contrast Check

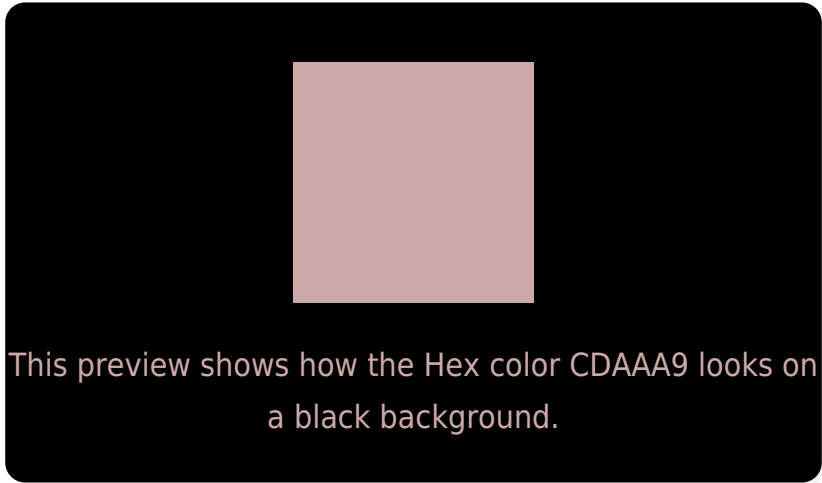
Large Text (above 18pt) WCAG AA × Fail

Any Text WCAG AA × Fail

Large Text (above 18pt) WCAG AAA × Fail

Any Text WCAG AAA × Fail

# Black Background



## Color Contrast Check

Large Text (above 18pt) WCAG AA ✓ Pass

Any Text WCAG AA ✓ Pass

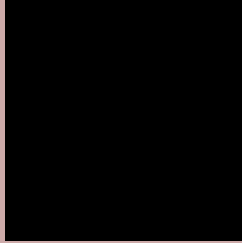
Large Text (above 18pt) WCAG AAA ✓ Pass

Any Text WCAG AAA ✓ Pass

If you want to check with other color combinations, try the [Color Contrast Checker](#).



## Hex CDAAA9 Background



This preview shows how black text looks on a background with the Hex color CDAAA9.

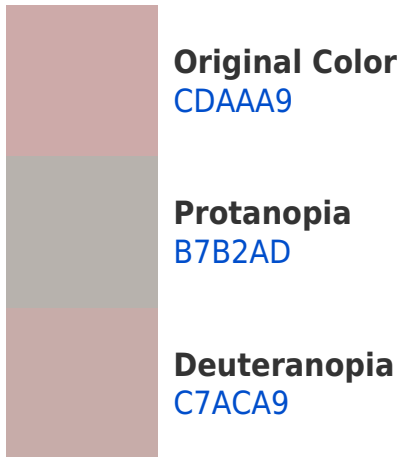


This preview shows how white text looks on a background with the Hex color CDAAA9.

# Color Blindness Simulation

Color vision deficiency is a very complex topic, and I could not describe the different causes any better than Wikipedia does, so if you want to learn more, you should check out their [article about color blindness](#).

## Dichromacy





**Tritanopia**  
CFA8B5

# Trichromacy



**Original Color**  
CDAAA9

**Protanomaly**  
BFAFAC

**Deuteranomaly**  
C9ABA9

**Tritanomaly**  
CEA9B1

# Monochromacy



**Original Color**  
CDAAA9

**Achromatopsia**  
B4B4B4

**Achromatomaly**  
BDB0B0

# CSS Examples

## Text

The CSS property to change the color of the text to Hex CDAAA9 is called "color". The color property can be set on classes, ids or directly on the HTML element.

This example shows how text in the color #CDAAA9 looks like.

```
.text, #text, p{  
    color:#CDAAA9  
}
```

If you want to add a text shadow in that color use the text-shadow property, you can generate a text shadow directly with our [CSS Text Shadow Generator](#).

Here you see how black text with a 4 pixel #CDAAA9 colored shadow looks like.

```
.shadow{ text-shadow: 4px 4px 2px #CDAAA9
}
```

## Border

The CSS property to change the border of an element to Hex CDAAA9 is called "border". The border property can be set on classes, ids or directly on the HTML element.

This example shows the color as border, it can be applied via the CSS property "border" or "border-color".

```
.border, #border, table{ border:4px solid
#CDAAA9 }
```

If only the border color should be changed use the property `border-color`.

```
.border{ border-color:#CDAAA9 }
```

If you want to add a box shadow in that color use:

Here you see how a box with a 4 pixel #CDAAA9 colored shadow looks like.

```
.boxshadow{ -moz-box-shadow:4px 4px 4px  
4px #CDAAA9; -webkit-box-shadow:4px 4px  
4px 4px #CDAAA9; box-shadow:4px 4px 4px  
4px #CDAAA9 }
```

# Background

The CSS property to change the background color of an element to Hex CDAAA9 is called "background". The background property can be set on classes, ids or directly on the HTML element.

```
.background, #background, body{  
background:#CDAAA9 }
```

If only the background color should be changed can be used:

```
.background{ background-color:#CDAAA9 }
```

This example shows the color as background, it is applied via the CSS property "background".

To optimize and compress your CSS code, you can use our [online CSS compressor and optimizer](#) based on csstidy. If you want to create a linear or radial gradient as background or border, check our [CSS Gradient Generator](#).



Hey! You found this booklet interesting? Support Converting Colors with the new Membership Option!

The pro membership hides all ads, plus gives you double the colors in the color bucket, and more awesome pro features!

**[Learn more, Memberships starting at \\$2.50/m!](#)**

**Follow me  
on Twitter!**

@ConvertingColor