

Converting Colors

Hex(CDACB3)

Have a look what the booklet for
Hex(CDACB3) contains.

| | |
|--|----|
| Hex(CDACB3) | 3 |
| <i>Conversions</i> | 4 |
| <i>Details</i> | 6 |
| <i>Harmonies</i> | 11 |
| <i>Previews</i> | 23 |
| <i>Color Blindness Simulation</i> | 26 |
| <i>CSS Examples</i> | 29 |

Color

Hex(CDACB3)

Conversions

Conversions Part 1

| Format | Color |
|-------------|---------------------------|
| Hex | CDACB3 |
| RGB | 205, 172, 179 |
| RGB Percent | 80%, 67%, 70% |
| CMY | 0.1961, 0.3255, 0.2980 |
| CMYK | 0.00, 0.16, 0.13, 0.20 |
| HSL | 347°, 25%, 74% |
| HSV | 347°, 16%, 80% |
| XYZ | 48.0660, 45.7389, 48.9430 |
| YIQ | 182.6650, 17.4210, 9.1730 |

Conversions

Conversions Part 2

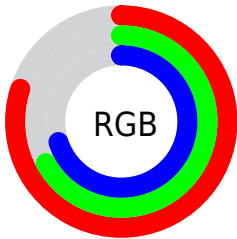
| Format | Color |
|-------------------------------------|-------------------------------|
| R _Y B | 205, 172, 179 |
| Decimal | 13479091 |
| CIE Lab | 73.38, 13.11, 0.89 |
| CIE LCh | 73, 13.145, 3.887 |
| Yxy | 45.7389, 0.3367, 0.3204 |
| Android (android.graphics.Color) | 4291669171 (0xFFCDACB3) |
| YUV | 182.6650, -1.8068, 19.5878 |
| Hunter-Lab | 67.6305, 8.5093, 4.4343 |

Details

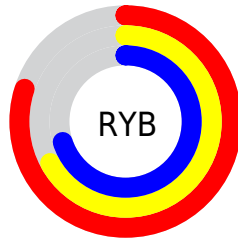
The Hex color **CDACB3** is a light color, and the websafe version is hex **CC9999**. A complement of this color would be **ACDC6**, and the grayscale version is **B7B7B7**.

A 20% lighter version of the original color is **FFE3EB**, and **96787E** is the 20% darker color. If you saturate the color by 10%, you get **CD98A3**, and if you desaturate by 10%, it is **CDC1C3**.

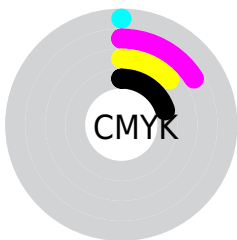
Distribution



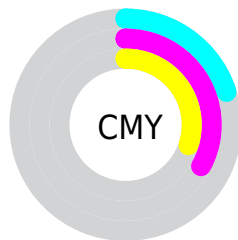
- Red (80%)
- Green (67%)
- Blue (70%)



- Red (80%)
- Yellow (67%)
- Blue (70%)



- Cyan (0%)
- Magenta (16%)
- Yellow (13%)
- Black (20%)



- Cyan (20%)
- Magenta (33%)
- Yellow (30%)

Brightness & Saturation Gradients

These gradients show how the Hex color CDACB3 changes by changing the brightness by 10 percent. The first figure shows a shift by +10% for each color and the second figure -10%.

Similar to the brightness gradients but the following saturation gradients show a change of the Hex color CDACB3 by changing the saturation by 10% instead.

 CDACB3

 CDACB3

FFFFFF

 B19198

 FFE3EB

 96787E

 7C5F65

 63474D

 4B3037

 341B21

 20020B

 000000

 CDACB3

 CDACB3

 CD98A3

 CDC1C3

 CD8393

 CDD5D3

 CD6F83

 CDEAE3

 CD5A72

 CDFEF4

 CD4662

 CDFFFF

 CD3152

 CD1D42

 CD0832

 CD002B

Harmonies

Analogous

The Analogous color harmony consists of three colors that are next to each other on the color wheel.



C6ADBFB



CDACB3



CEADA7

Triad

The Triadic color harmony groups three colors that are evenly spaced from another and form a triangle on the color wheel.



CDACB3



AFB8A0



9CB8C9

Complementary

The Complementary color scheme is a pair of colors which are on the opposite of each other on the color wheel.



CDACB3



ACCDC6

Split Complementary

Split-complementary colors differ from the complementary color scheme. The scheme consists of three colors, the original color and two neighbors of the complement color.



96BBC1



CDACB3



A1BAA9

Square

The Square scheme is like the rectangle color scheme, but the four colors are evenly spaced on the color wheel.



CDACB3



BCB49C



98BBB5



A9B5CC

Rectangle

The Rectangle color scheme consists of four colors that form a rectangle on the color wheel.



CDACB3



CAAF1



98BBB5



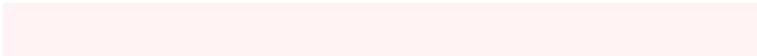
99B9C7

Sweetspot

The Sweet Spot groups the original color and five complimentary colors.



CDACB3



FFF2F5



C6ACCD



807879



000000



808080

Same Dimension

The Same Dimension uses a secret algorithm to generate beautiful new colors.



CDACB3



FFCFD9



CDB5AC



665C5E



A60023



260008

Inverse Universe

The Inverse Universe completely reimagines the original color for something new.



CDACB3



FFCFD9



ACC4CD



665C5E



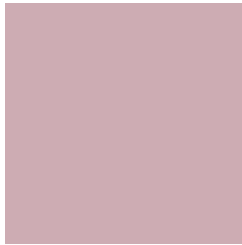
A60023



260008

Previews

White Background



This preview shows how the Hex color CDACB3 looks on a white background.

Color Contrast Check

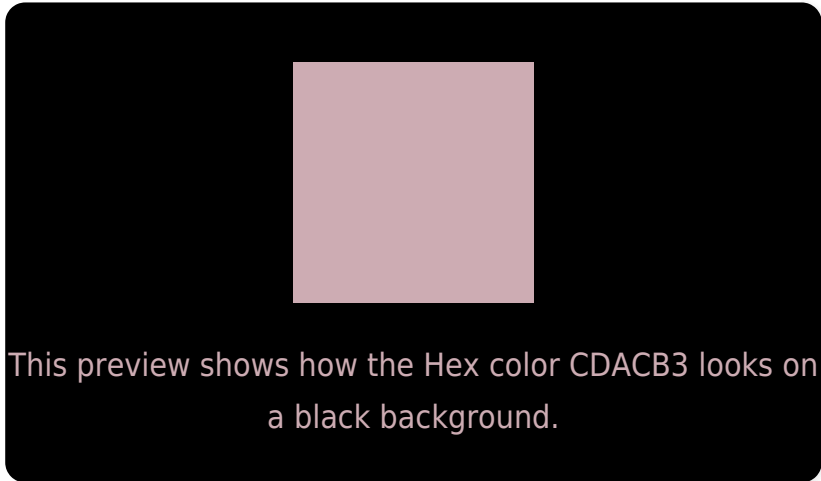
Large Text (above 18pt) WCAG AA × Fail

Any Text WCAG AA × Fail

Large Text (above 18pt) WCAG AAA × Fail

Any Text WCAG AAA × Fail

Black Background



Color Contrast Check

Large Text (above 18pt) WCAG AA ✓ Pass

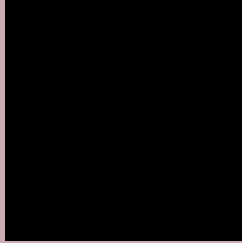
Any Text WCAG AA ✓ Pass

Large Text (above 18pt) WCAG AAA ✓ Pass

Any Text WCAG AAA ✓ Pass

If you want to check with other color combinations, try the [Color Contrast Checker](#).

Hex CDACB3 Background



This preview shows how black text looks on a background with the Hex color CDACB3.

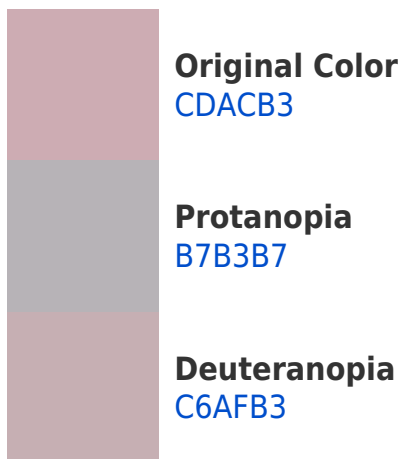


This preview shows how white text looks on a background with the Hex color CDACB3.

Color Blindness Simulation

Color vision deficiency is a very complex topic, and I could not describe the different causes any better than Wikipedia does, so if you want to learn more, you should check out their [article about color blindness](#).

Dichromacy



Trichromacy



Original Color
CDACB3

Protanomaly
BFB0B6

Deuteranomaly
C9AEB3

Tritanomaly
CEABB6

Monochromacy



Original Color
CDACB3

Achromatopsia
B7B7B7

Achromatomaly
BFB3B6

CSS Examples

Text

The CSS property to change the color of the text to Hex CDACB3 is called "color". The color property can be set on classes, ids or directly on the HTML element.

This example shows how text in the color #CDACB3 looks like.

```
.text, #text, p{  
    color:#CDACB3  
}
```

If you want to add a text shadow in that color use the text-shadow property, you can generate a text shadow directly with our [CSS Text Shadow Generator](#).

Here you see how black text with a 4 pixel #CDACB3 colored shadow looks like.

```
.shadow{ text-shadow: 4px 4px 2px #CDACB3
}
```

Border

The CSS property to change the border of an element to Hex CDACB3 is called "border". The border property can be set on classes, ids or directly on the HTML element.

This example shows the color as border, it can be applied via the CSS property "border" or "border-color".

```
.border, #border, table{ border:4px solid
#CDACB3 }
```

If only the border color should be changed use the property `border-color`.

```
.border{ border-color:#CDACB3 }
```

If you want to add a box shadow in that color use:

Here you see how a box with a 4 pixel #CDACB3 colored shadow looks like.

```
.boxshadow{ -moz-box-shadow:4px 4px 4px  
4px #CDACB3; -webkit-box-shadow:4px 4px  
4px 4px #CDACB3; box-shadow:4px 4px 4px  
4px #CDACB3 }
```

Background

The CSS property to change the background color of an element to Hex CDACB3 is called "background". The background property can be set on classes, ids or directly on the HTML element.

```
.background, #background, body{  
background:#CDACB3 }
```

If only the background color should be changed can be used:

```
.background{ background-color:#CDACB3 }
```

This example shows the color as background, it is applied via the CSS property "background".

To optimize and compress your CSS code, you can use our [online CSS compressor and optimizer](#) based on csstidy. If you want to create a linear or radial gradient as background or border, check our [CSS Gradient Generator](#).

Hey! You found this booklet interesting? Support Converting Colors with the new Membership Option!

The pro membership hides all ads, plus gives you double the colors in the color bucket, and more awesome pro features!

[Learn more, Memberships starting at \\$2.50/m!](#)

**Follow me
on Twitter!**

@ConvertingColor