

Converting Colors

Hex(CDAEA5)

Have a look what the booklet for
Hex(CDAEA5) contains.

Hex(CDAEA5)	3
<i>Conversions</i>	4
<i>Details</i>	6
<i>Harmonies</i>	11
<i>Previews</i>	23
<i>Color Blindness Simulation</i>	26
<i>CSS Examples</i>	29

Color

Hex(CDAEA5)

Conversions

Conversions Part 1

Format	Color
Hex	CDAEA5
RGB	205, 174, 165
RGB Percent	80%, 68%, 65%
CMY	0.1961, 0.3176, 0.3529
CMYK	0.00, 0.15, 0.20, 0.20
HSL	13°, 29%, 73%
HSV	13°, 20%, 80%
XYZ	47.1044, 45.9679, 41.9873
YIQ	182.2430, 21.3650, 3.7730

Conversions

Conversions Part 2

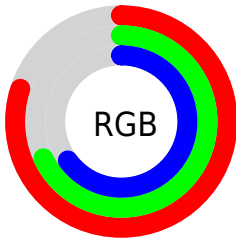
Format	Color
RYP	205, 177, 165
Decimal	13479589
CIELab	73.52, 9.80, 8.78
CIELCh	74, 13.156, 41.861
Yxy	45.9679, 0.3488, 0.3404
Android (android.graphics.Color)	4291669669 (0xFFCDAEA5)
YUV	182.2430, -8.5008, 19.9579
Hunter-Lab	67.7996, 5.3653, 10.7423

Details

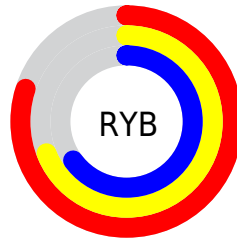
The Hex color **CDAEA5** is a light color, and the websafe version is hex **CC9999**. A complement of this color would be **A5C4CD**, and the grayscale version is **B6B6B6**.

A 20% lighter version of the original color is **FFE6DC**, and **967A71** is the 20% darker color. If you saturate the color by 10%, you get **CD9E91**, and if you desaturate by 10%, it is **CDBEBA**.

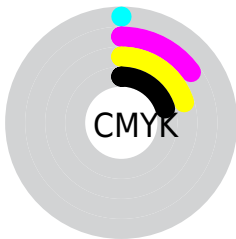
Distribution



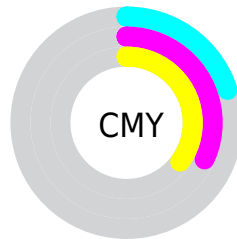
- Red (80%)
- Green (68%)
- Blue (65%)



- Red (80%)
- Yellow (69%)
- Blue (65%)



- Cyan (0%)
- Magenta (15%)
- Yellow (20%)
- Black (20%)



- Cyan (20%)
- Magenta (32%)
- Yellow (35%)

Brightness & Saturation Gradients

These gradients show how the Hex color CDAEA5 changes by changing the brightness by 10 percent. The first figure shows a shift by +10% for each color and the second figure -10%.

Similar to the brightness gradients but the following saturation gradients show a change of the Hex color CDAEA5 by changing the saturation by 10% instead.

 CDAEA5

 CDAEA5

FFFFFF

 B1938B

 FFE6DC

 967A71

 FFFFFFF8

 7C6159

 634941

 4A322B

 331D17

 1F0500

 000000

 CDAEA5

 CDAEA5

 CD9E91

 CDBEBA

 CD8E7C

 CDCECE

 CD7E68

 CDDEE3

 CD6E53

 CDEEF7

 CD5F3E

 CDFDF7

 CD4F2A

 CDFFFF

 CD3F15

 CD2F01

 CD2E00

Harmonies

Analogous

The Analogous color harmony consists of three colors that are next to each other on the color wheel.



CEACB0



CDAEA5



C5B19E

Triad

The Triadic color harmony groups three colors that are evenly spaced from another and form a triangle on the color wheel.



CDAEA5



9FBBAD



AEB4CC

Complementary

The Complementary color scheme is a pair of colors which are on the opposite of each other on the color wheel.



CDAEA5



A5C4CD

Split Complementary

Split-complementary colors differ from the complementary color scheme. The scheme consists of three colors, the original color and two neighbors of the complement color.



A0B8CB



CDAEA5



97BCB9

Square

The Square scheme is like the rectangle color scheme, but the four colors are evenly spaced on the color wheel.



CDAEA5



ABB9A2



97BBC4



BDB0C7

Rectangle

The Rectangle color scheme consists of four colors that form a rectangle on the color wheel.



CDAEA5



BEB49D



97BBC4



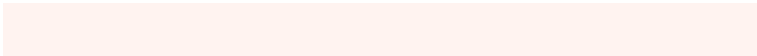
A9B5CC

Sweetspot

The Sweet Spot groups the original color and five complimentary colors.



CDAEA5



FFF3F0



CDA5C4



807977



000000



808080

Same Dimension

The Same Dimension uses a secret algorithm to generate beautiful new colors.



CDAEA5



FFD2C4



CDC2A5



665E5C



A62500



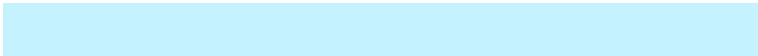
260900

Inverse Universe

The Inverse Universe completely reimagines the original color for something new.



A5C4CD



C4F2FF



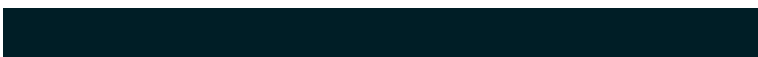
A5B0CD



5C6466



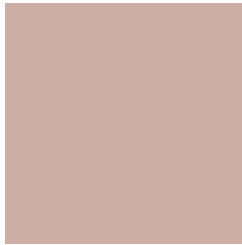
0080A6



001E26

Previews

White Background



This preview shows how the Hex color CDAEA5 looks on a white background.

Color Contrast Check

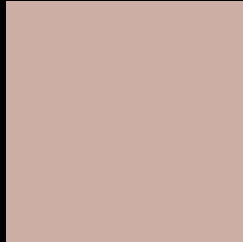
Large Text (above 18pt) WCAG AA × Fail

Any Text WCAG AA × Fail

Large Text (above 18pt) WCAG AAA × Fail

Any Text WCAG AAA × Fail

Black Background



This preview shows how the Hex color CDAEA5 looks on a black background.

Color Contrast Check

Large Text (above 18pt) WCAG AA ✓ Pass

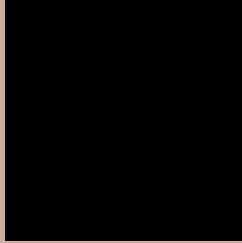
Any Text WCAG AA ✓ Pass

Large Text (above 18pt) WCAG AAA ✓ Pass

Any Text WCAG AAA ✓ Pass

If you want to check with other color combinations, try the [Color Contrast Checker](#).

Hex CDAEA5 Background



This preview shows how black text looks on a background with the Hex color CDAEA5.

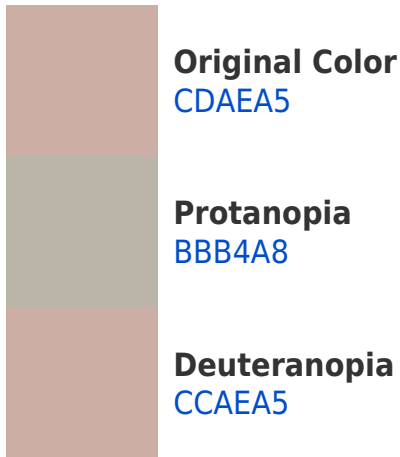


This preview shows how white text looks on a background with the Hex color CDAEA5.

Color Blindness Simulation

Color vision deficiency is a very complex topic, and I could not describe the different causes any better than Wikipedia does, so if you want to learn more, you should check out their [article about color blindness](#).

Dichromacy



Trichromacy



Original Color
CDAEA5

Protanomaly
C2B2A7

Deuteranomaly
CCAEA5

Tritanomaly
CEACB1

Monochromacy



Original Color
CDAEA5

Achromatopsia
B6B6B6

Achromatomaly
BEB3B0

CSS Examples

Text

The CSS property to change the color of the text to Hex CDAEA5 is called "color". The color property can be set on classes, ids or directly on the HTML element.

This example shows how text in the color #CDAEA5 looks like.

```
.text, #text, p{  
    color:#CDAEA5  
}
```

If you want to add a text shadow in that color use the text-shadow property, you can generate a text shadow directly with our [CSS Text Shadow Generator](#).

Here you see how black text with a 4 pixel #CDAEA5 colored shadow looks like.

```
.shadow{ text-shadow: 4px 4px 2px #CDAEA5
}
```

Border

The CSS property to change the border of an element to Hex CDAEA5 is called "border". The border property can be set on classes, ids or directly on the HTML element.

This example shows the color as border, it can be applied via the CSS property "border" or "border-color".

```
.border, #border, table{ border:4px solid
#CDAEA5 }
```

If only the border color should be changed use the property `border-color`.

```
.border{ border-color:#CDAEA5 }
```

If you want to add a box shadow in that color use:

Here you see how a box with a 4 pixel #CDAEA5 colored shadow looks like.

```
.boxshadow{ -moz-box-shadow:4px 4px 4px  
4px #CDAEA5; -webkit-box-shadow:4px 4px  
4px 4px #CDAEA5; box-shadow:4px 4px 4px  
4px #CDAEA5 }
```

Background

The CSS property to change the background color of an element to Hex CDAEA5 is called "background". The background property can be set on classes, ids or directly on the HTML element.

```
.background, #background, body{  
background:#CDAEA5 }
```

If only the background color should be changed can be used:

```
.background{ background-color:#CDAEA5 }
```

This example shows the color as background, it is applied via the CSS property "background".

To optimize and compress your CSS code, you can use our [online CSS compressor and optimizer](#) based on csstidy. If you want to create a linear or radial gradient as background or border, check our [CSS Gradient Generator](#).

Hey! You found this booklet interesting? Support Converting Colors with the new Membership Option!

The pro membership hides all ads, plus gives you double the colors in the color bucket, and more awesome pro features!

[Learn more, Memberships starting at \\$2.50/m!](#)

**Follow me
on Twitter!**

@ConvertingColor