

# Converting Colors

Hex(CDAEB6)

Have a look what the booklet for  
Hex(CDAEB6) contains.

<b>Hex(CDAEB6)</b>	3
<i><b>Conversions</b></i>	4
<i><b>Details</b></i>	6
<i><b>Harmonies</b></i>	11
<i><b>Previews</b></i>	23
<i><b>Color Blindness Simulation</b></i>	26
<i><b>CSS Examples</b></i>	29

# Color

**Hex(CDAEB6)**

# Conversions

Conversions Part 1	
Format	Color
Hex	CDAEB6
RGB	205, 174, 182
RGB Percent	80%, 68%, 71%
CMY	0.1961, 0.3176, 0.2863
CMYK	0.00, 0.15, 0.11, 0.20
HSL	345°, 24%, 74%
HSV	345°, 15%, 80%
XYZ	48.7564, 46.6286, 50.6865
YIQ	184.1810, 15.9080, 9.0600

# Conversions

## Conversions Part 2

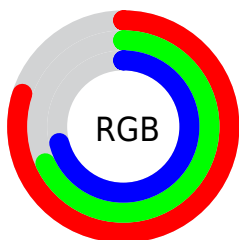
Format	Color
<a href="#">RYB</a>	<a href="#">205, 174, 182</a>
Decimal	<a href="#">13479606</a>
CIELab	<a href="#">73.95, 12.53, 0.09</a>
CIELCh	<a href="#">74, 12.531, 0.392</a>
Yxy	<a href="#">46.6286, 0.3338, 0.3192</a>
Android (android.graphics.Color)	<a href="#">4291669686</a> (0xFFCDAEB6)
YUV	<a href="#">184.1810, -1.0752, 18.2583</a>
Hunter-Lab	<a href="#">68.2852, 7.9520, 3.7901</a>

# Details

The Hex color **CDAEB6** is a light color, and the websafe version is hex **CC9999**. A complement of this color would be **AECDC5**, and the grayscale version is **B8B8B8**.

A 20% lighter version of the original color is **FFE6EE**, and **977A81** is the 20% darker color. If you saturate the color by 10%, you get **CD9AA7**, and if you desaturate by 10%, it is **CDC3C5**.

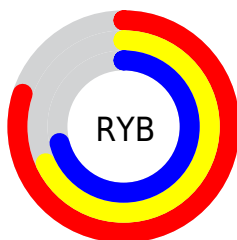
# Distribution



Red (80%)

Green (68%)

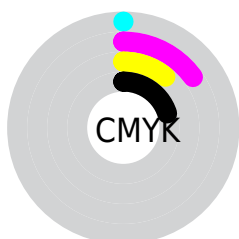
Blue (71%)



Red (80%)

Yellow (68%)

Blue (71%)

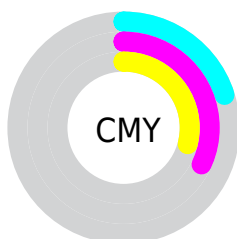


Cyan (0%)

Magenta (15%)

Yellow (11%)

Black (20%)



Cyan (20%)

Magenta (32%)

Yellow (29%)

# Brightness & Saturation Gradients

These gradients show how the Hex color CDAEB6 changes by changing the brightness by 10 percent. The first figure shows a shift by +10% for each color and the second figure -10%.

Similar to the brightness gradients but the following saturation gradients show a change of the Hex color CDAEB6 by changing the saturation by 10% instead.

 CDAEB6

FFFFFF

 FFE6EE

 CDAEB6

 B1939B

 977A81

 7C6168

 634950

 4B3239

 341D24

 20050E

 000000

 CDAEB6

 CDAEB6

 CD9AA7

 CDC3C5

 CD8598

 CDD7D4

 CD7188

 CDEBE4

 CD5C79

 CDFFF3

 CD486A

 CDFFFF

 CD335B

 CD1F4C

 CD0A3C

 CD0035

# Harmonies

## Analogous

The Analogous color harmony consists of three colors that are next to each other on the color wheel.



C5B0C1



CDAEB6



CEAFAB

# Triad

The Triadic color harmony groups three colors that are evenly spaced from another and form a triangle on the color wheel.



CDAEB6



B2B9A2



9EBAC9

# Complementary

The Complementary color scheme is a pair of colors which are on the opposite of each other on the color wheel.



CDAEB6



AE CDC5

# Split Complementary

Split-complementary colors differ from the complementary color scheme. The scheme consists of three colors, the original color and two neighbors of the complement color.



99BCC1



CDAEB6



A5BBAA

# Square

The Square scheme is like the rectangle color scheme, but the four colors are evenly spaced on the color wheel.



CDAEB6



BFB59F



9CBDB5



AAB7CC

# Rectangle

The Rectangle color scheme consists of four colors that form a rectangle on the color wheel.



CDAEB6



CCB0A4



9CBDB5



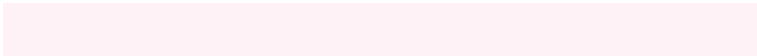
9BBBC7

# Sweetspot

The Sweet Spot groups the original color and five complimentary colors.



CDAEB6



FFF2F6



C5AECD



80787A



000000



808080



# Same Dimension

The Same Dimension uses a secret algorithm to generate beautiful new colors.



CDAEB6



FFD1DD



CDB5AE



665C5E



A6002B



26000A



# Inverse Universe

The Inverse Universe completely reimagines the original color for something new.



CDAEB6



FFD1DD



AEC6CD



665C5E



A6002B

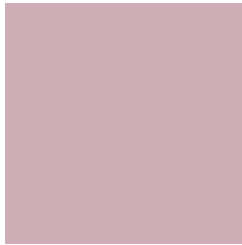


26000A



# Previews

## White Background



This preview shows how the Hex color CDAEB6 looks on a white background.

## Color Contrast Check

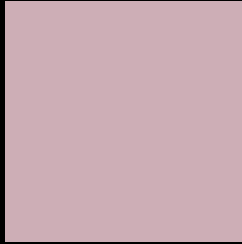
Large Text (above 18pt) WCAG AA × Fail

Any Text WCAG AA × Fail

Large Text (above 18pt) WCAG AAA × Fail

Any Text WCAG AAA × Fail

# Black Background



This preview shows how the Hex color CDAEB6 looks on a black background.

## Color Contrast Check

Large Text (above 18pt) WCAG AA ✓ Pass

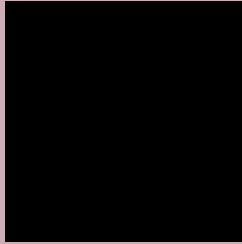
Any Text WCAG AA ✓ Pass

Large Text (above 18pt) WCAG AAA ✓ Pass

Any Text WCAG AAA ✓ Pass

If you want to check with other color combinations, try the [Color Contrast Checker](#).

## Hex CDAEB6 Background



This preview shows how black text looks on a background with the Hex color CDAEB6.



This preview shows how white text looks on a background with the Hex color CDAEB6.

# Color Blindness Simulation

Color vision deficiency is a very complex topic, and I could not describe the different causes any better than Wikipedia does, so if you want to learn more, you should check out their [article about color blindness](#).

## Dichromacy





**Original Color**  
CDAEB6

**Protanopia**  
B8B5BA

**Deuteranopia**  
C7B0B6



# Trichromacy

	<b>Original Color</b> CDAEB6
	<b>Protanomaly</b> C0B2B9
	<b>Deuteranomaly</b> C9AFB6
	<b>Tritanomaly</b> CEADB9

# Monochromacy

	<b>Original Color</b> CDAEB6
	<b>Achromatopsia</b> B8B8B8
	<b>Achromatomaly</b> C0B4B7

# CSS Examples

## Text

The CSS property to change the color of the text to Hex CDAEB6 is called "color". The color property can be set on classes, ids or directly on the HTML element.

This example shows how text in the color #CDAEB6 looks like.

```
.text, #text, p{  
    color:#CDAEB6  
}
```

If you want to add a text shadow in that color use the text-shadow property, you can generate a text shadow directly with our [CSS Text Shadow Generator](#).

Here you see how black text with a 4 pixel #CDAEB6 colored shadow looks like.

```
.shadow{ text-shadow: 4px 4px 2px #CDAEB6
}
```

## Border

The CSS property to change the border of an element to Hex CDAEB6 is called "border". The border property can be set on classes, ids or directly on the HTML element.

This example shows the color as border, it can be applied via the CSS property "border" or "border-color".

```
.border, #border, table{ border:4px solid
#CDAEB6 }
```

If only the border color should be changed use the property `border-color`.

```
.border{ border-color:#CDAEB6 }
```

If you want to add a box shadow in that color use:

Here you see how a box with a 4 pixel #CDAEB6 colored shadow looks like.

```
.boxshadow{ -moz-box-shadow:4px 4px 4px  
4px #CDAEB6; -webkit-box-shadow:4px 4px  
4px 4px #CDAEB6; box-shadow:4px 4px 4px  
4px #CDAEB6 }
```

# Background

The CSS property to change the background color of an element to Hex CDAEB6 is called "background". The background property can be set on classes, ids or directly on the HTML element.

```
.background, #background, body{  
background:#CDAEB6 }
```

If only the background color should be changed can be used:

```
.background{ background-color:#CDAEB6 }
```

This example shows the color as background, it is applied via the CSS property "background".

To optimize and compress your CSS code, you can use our [online CSS compressor and optimizer](#) based on csstidy. If you want to create a linear or radial gradient as background or border, check our [CSS Gradient Generator](#).

Hey! You found this booklet  
interesting? Support Converting  
Colors with the new Membership  
Option!

The pro membership hides all ads, plus gives you  
double the colors in the color bucket, and more  
awesome pro features!

**[Learn more, Memberships starting at \\$2.50/m!](#)**

**Follow me  
on Twitter!**

@ConvertingColor