

Converting Colors

Hex(CDAF91)

Have a look what the booklet for
Hex(CDAF91) contains.

Hex(CDAF91)	3
<i>Conversions</i>	4
<i>Details</i>	6
<i>Harmonies</i>	11
<i>Previews</i>	23
<i>Color Blindness Simulation</i>	26
<i>CSS Examples</i>	29

Color

Hex(CDAF91)

Conversions

Conversions Part 1

Format	Color
Hex	CDAF91
RGB	205, 175, 145
RGB Percent	80%, 69%, 57%
CMY	0.1961, 0.3137, 0.4314
CMYK	0.00, 0.15, 0.29, 0.20
HSL	30°, 38%, 69%
HSV	30°, 29%, 80%
XYZ	45.6176, 45.6834, 33.2015
YIQ	180.5500, 27.5100, -2.9700

Conversions

Conversions Part 2

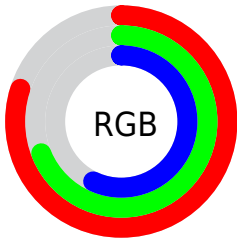
Format	Color
R _Y B	205, 205, 145
Decimal	13479825
CIE Lab	73.34, 6.39, 19.42
CIE LCh	73, 20.442, 71.790
Yxy	45.6834, 0.3664, 0.3669
Android (android.graphics.Color)	4291669905 (0xFFCDAF91)
YUV	180.5500, -17.5261, 21.4427
Hunter-Lab	67.5895, 2.1919, 18.1880

Details

The Hex color **CDAF91** is a light color, and the websafe version is hex **CC9966**. A complement of this color would be **91AFCD**, and the grayscale version is **B5B5B5**.

A 20% lighter version of the original color is **FFE7C7**, and **967B5E** is the 20% darker color. If you saturate the color by 10%, you get **CDA57C**, and if you desaturate by 10%, it is **CDB9A6**.

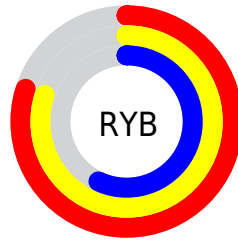
Distribution



Red (80%)

Green (69%)

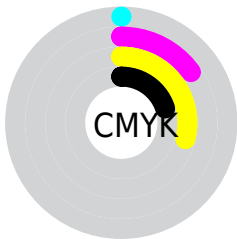
Blue (57%)



Red (80%)

Yellow (80%)

Blue (57%)

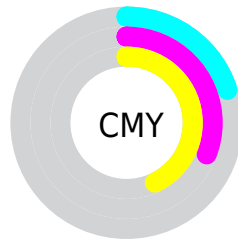


Cyan (0%)

Magenta (15%)

Yellow (29%)

Black (20%)



Cyan (20%)

Magenta (31%)

Yellow (43%)

Brightness & Saturation Gradients

These gradients show how the Hex color CDAF91 changes by changing the brightness by 10 percent. The first figure shows a shift by +10% for each color and the second figure -10%.

Similar to the brightness gradients but the following saturation gradients show a change of the Hex color CDAF91 by changing the saturation by 10% instead.

 CDAF91

 CDAF91

FFFFFF

 B19477

 FFE7C7

 967B5E

 FFFFFE3

 7B6247

 624A30

 49331B

 321E01

 1B0700

 000000

 CDAF91

 CDAF91

 CDA57C

 CDB9A6

 CD9B68

 CDC3BA

 CD9053

 CDCECF

 CD863F

 CDD8E3

 CD7C2A

 CDE2F8

 CD7216

 CDECFE

 CD6701

 CDF7FF

 CD6700

 CDFFFF

Harmonies

Analogous

The Analogous color harmony consists of three colors that are next to each other on the color wheel.



D9AA9C



CDAF91



BBB58F

Triad

The Triadic color harmony groups three colors that are evenly spaced from another and form a triangle on the color wheel.



CDAF91



83BFBB



C1ADD0

Complementary

The Complementary color scheme is a pair of colors which are on the opposite of each other on the color wheel.



CDAF91



91AFCD

Split Complementary

Split-complementary colors differ from the complementary color scheme. The scheme consists of three colors, the original color and two neighbors of the complement color.



A8B3D8



CDAF91



82BDCC

Square

The Square scheme is like the rectangle color scheme, but the four colors are evenly spaced on the color wheel.



CDAF91



91BEA8



91B9D7



D3A8C0

Rectangle

The Rectangle color scheme consists of four colors that form a rectangle on the color wheel.



CDAF91



ADB994



91B9D7



B9AFD4

Sweetspot

The Sweet Spot groups the original color and five complimentary colors.



CDAF91



FFF4E8



CD91AF



807871



000000



808080

Same Dimension

The Same Dimension uses a secret algorithm to generate beautiful new colors.



CDAF91



FFD2A6



CDCD91



66615C



A65300



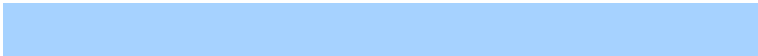
261300

Inverse Universe

The Inverse Universe completely reimagines the original color for something new.



91AFCD



A6D2FF



9191CD



5C6166



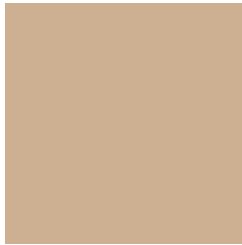
0053A6



001326

Previews

White Background



This preview shows how the Hex color CDAF91 looks on a white background.

Color Contrast Check

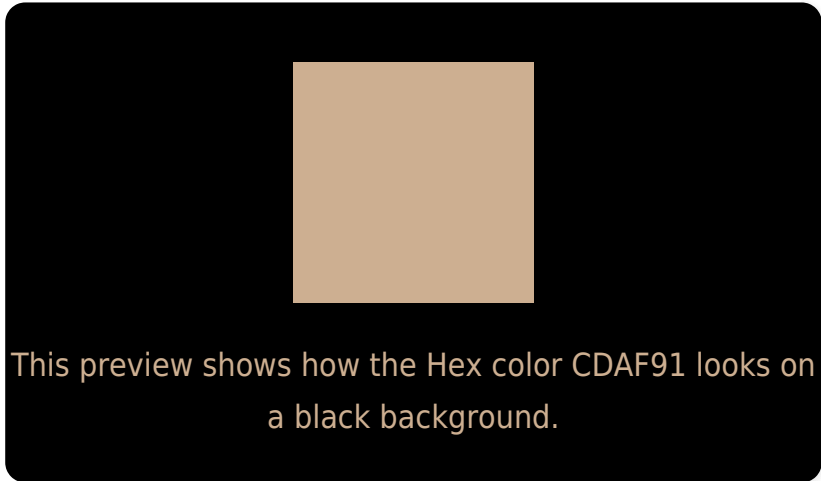
Large Text (above 18pt) WCAG AA × Fail

Any Text WCAG AA × Fail

Large Text (above 18pt) WCAG AAA × Fail

Any Text WCAG AAA × Fail

Black Background



Color Contrast Check

Large Text (above 18pt) WCAG AA ✓ Pass

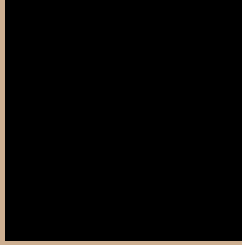
Any Text WCAG AA ✓ Pass

Large Text (above 18pt) WCAG AAA ✓ Pass

Any Text WCAG AAA ✓ Pass

If you want to check with other color combinations, try the [Color Contrast Checker](#).

Hex CDAF91 Background



This preview shows how black text looks on a background with the Hex color CDAF91.



This preview shows how white text looks on a background with the Hex color CDAF91.

Color Blindness Simulation

Color vision deficiency is a very complex topic, and I could not describe the different causes any better than Wikipedia does, so if you want to learn more, you should check out their [article about color blindness](#).

Dichromacy



Original Color
CDAF91

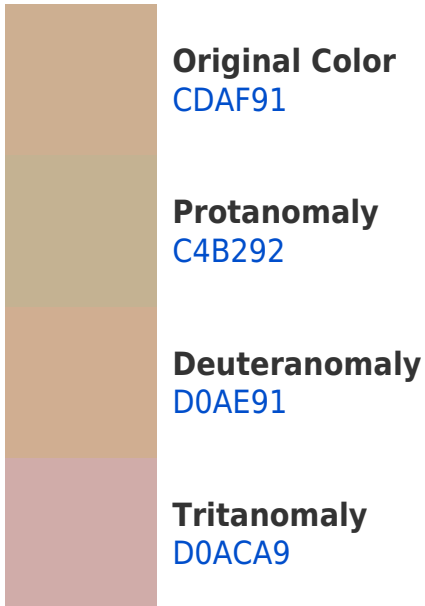
Protanopia
BFB493

Deuteranopia
D2AD91

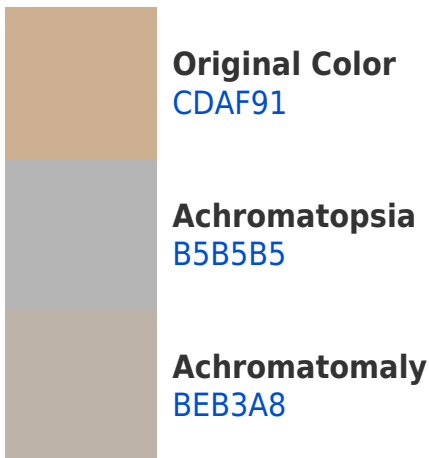


Tritanopia
D1AAB7

Trichromacy



Monochromacy



CSS Examples

Text

The CSS property to change the color of the text to Hex CDAF91 is called "color". The color property can be set on classes, ids or directly on the HTML element.

This example shows how text in the color #CDAF91 looks like.

```
.text, #text, p{  
    color:#CDAF91  
}
```

If you want to add a text shadow in that color use the text-shadow property, you can generate a text shadow directly with our [CSS Text Shadow Generator](#).

Here you see how black text with a 4 pixel #CDAF91 colored shadow looks like.

```
.shadow{ text-shadow: 4px 4px 2px #CDAF91
}
```

Border

The CSS property to change the border of an element to Hex CDAF91 is called "border". The border property can be set on classes, ids or directly on the HTML element.

This example shows the color as border, it can be applied via the CSS property "border" or "border-color".

```
.border, #border, table{ border:4px solid
#CDAF91 }
```

If only the border color should be changed use the property `border-color`.

```
.border{ border-color:#CDAF91 }
```

If you want to add a box shadow in that color use:

Here you see how a box with a 4 pixel #CDAF91 colored shadow looks like.

```
.boxshadow{ -moz-box-shadow:4px 4px 4px  
4px #CDAF91; -webkit-box-shadow:4px 4px  
4px 4px #CDAF91; box-shadow:4px 4px 4px  
4px #CDAF91 }
```

Background

The CSS property to change the background color of an element to Hex CDAF91 is called "background". The background property can be set on classes, ids or directly on the HTML element.

```
.background, #background, body{  
background:#CDAF91 }
```

If only the background color should be changed can be used:

```
.background{ background-color:#CDAF91 }
```

This example shows the color as background, it is applied via the CSS property "background".

To optimize and compress your CSS code, you can use our [online CSS compressor and optimizer](#) based on csstidy. If you want to create a linear or radial gradient as background or border, check our [CSS Gradient Generator](#).

Hey! You found this booklet interesting? Support Converting Colors with the new Membership Option!

The pro membership hides all ads, plus gives you double the colors in the color bucket, and more awesome pro features!

[Learn more, Memberships starting at \\$2.50/m!](#)

**Follow me
on Twitter!**

@ConvertingColor