

Converting Colors

Hex(CDB1A9)

Have a look what the booklet for
Hex(CDB1A9) contains.

Hex(CDB1A9)	3
<i>Conversions</i>	4
<i>Details</i>	6
<i>Harmonies</i>	11
<i>Previews</i>	23
<i>Color Blindness Simulation</i>	26
<i>CSS Examples</i>	29

Color

Hex(CDB1A9)

Conversions

Conversions Part 1

Format	Color
Hex	CDB1A9
RGB	205, 177, 169
RGB Percent	80%, 69%, 66%
CMY	0.1961, 0.3059, 0.3373
CMYK	0.00, 0.14, 0.18, 0.20
HSL	13°, 26%, 73%
HSV	13°, 18%, 80%
XYZ	48.0604, 47.2880, 44.1306
YIQ	184.4600, 19.2560, 3.4480

Conversions

Conversions Part 2

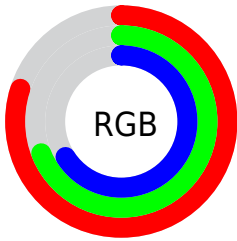
Format	Color
R _Y B	205, 179, 169
Decimal	13480361
CIE Lab	74.37, 8.80, 7.81
CIE LCh	74, 11.762, 41.585
Yxy	47.2880, 0.3446, 0.3390
Android (android.graphics.Color)	4291670441 (0xFFCDB1A9)
YUV	184.4600, -7.6218, 18.0136
Hunter-Lab	68.7663, 4.4118, 10.0872

Details

The Hex color **CDB1A9** is a light color, and the websafe version is hex **CC9999**. A complement of this color would be **A9C5CD**, and the grayscale version is **B9B9B9**.

A 20% lighter version of the original color is **FFE9E0**, and **967C75** is the 20% darker color. If you saturate the color by 10%, you get **CDA195**, and if you desaturate by 10%, it is **CDC1BE**.

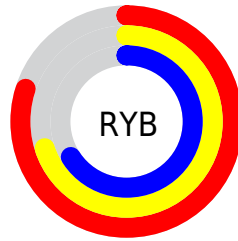
Distribution



Red (80%)

Green (69%)

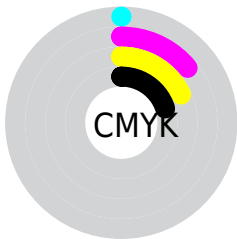
Blue (66%)



Red (80%)

Yellow (70%)

Blue (66%)

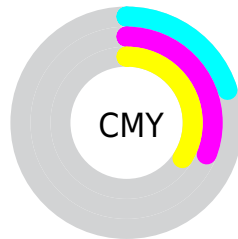


Cyan (0%)

Magenta (14%)

Yellow (18%)

Black (20%)



Cyan (20%)

Magenta (31%)

Yellow (34%)

Brightness & Saturation Gradients

These gradients show how the Hex color CDB1A9 changes by changing the brightness by 10 percent. The first figure shows a shift by +10% for each color and the second figure -10%.

Similar to the brightness gradients but the following saturation gradients show a change of the Hex color CDB1A9 by changing the saturation by 10% instead.



CDB1A9



CDB1A9

FFFFFF



B1968F



FFE9E0



967C75

FFFFFFD



7C635C



634C45



4B352F



33201A



200800



000000



CDB1A9



CDB1A9

 CDA195

 CDC1BE

 CD9180

 CDD1D2

 CD816B

 CDE1E6

 CD7157

 CDF1FB

 CD6142

 CDFFFF

 CD512E

 CD411A

 CD3105

 CD2E00

Harmonies

Analogous

The Analogous color harmony consists of three colors that are next to each other on the color wheel.



CEB0B3



CDB1A9



C6B4A3

Triad

The Triadic color harmony groups three colors that are evenly spaced from another and form a triangle on the color wheel.



CDB1A9



A4BDB0



B1B6CC

Complementary

The Complementary color scheme is a pair of colors which are on the opposite of each other on the color wheel.



CDB1A9



A9C5CD

Split Complementary

Split-complementary colors differ from the complementary color scheme. The scheme consists of three colors, the original color and two neighbors of the complement color.



A4BACB



CDB1A9



9DBDBB

Square

The Square scheme is like the rectangle color scheme, but the four colors are evenly spaced on the color wheel.



CDB1A9



AFBBA7



9DBCC5



BEB3C7

Rectangle

The Rectangle color scheme consists of four colors that form a rectangle on the color wheel.



CDB1A9



BFB6A1



9DBCC5



ACB8CC

Sweetspot

The Sweet Spot groups the original color and five complimentary colors.



CDB1A9



FFF5F2



CDA9C5



807A78



000000



808080

Same Dimension

The Same Dimension uses a secret algorithm to generate beautiful new colors.



CDB1A9



FFD5C9



CDC3A9



665E5C



A62500



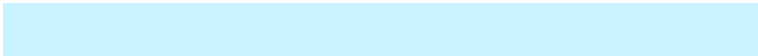
260800

Inverse Universe

The Inverse Universe completely reimagines the original color for something new.



A9C5CD



C9F3FF



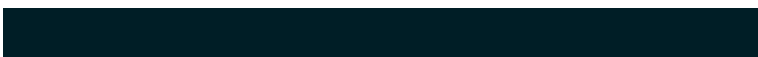
A9B3CD



5C6466



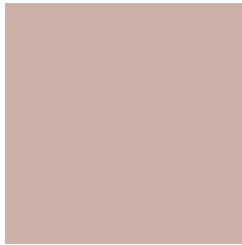
0081A6



001E26

Previews

White Background



This preview shows how the Hex color CDB1A9 looks on a white background.

Color Contrast Check

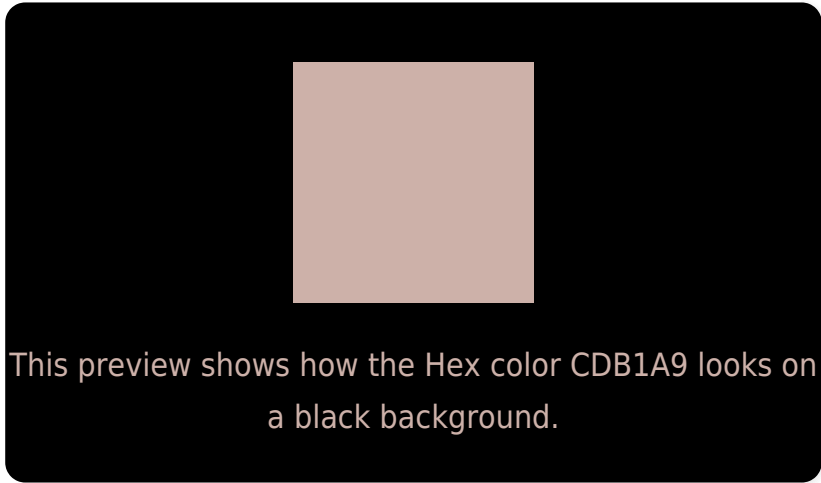
Large Text (above 18pt) WCAG AA × Fail

Any Text WCAG AA × Fail

Large Text (above 18pt) WCAG AAA × Fail

Any Text WCAG AAA × Fail

Black Background



Color Contrast Check

Large Text (above 18pt) WCAG AA ✓ Pass

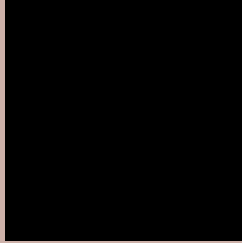
Any Text WCAG AA ✓ Pass

Large Text (above 18pt) WCAG AAA ✓ Pass

Any Text WCAG AAA ✓ Pass

If you want to check with other color combinations, try the [Color Contrast Checker](#).

Hex CDB1A9 Background



This preview shows how black text looks on a background with the Hex color CDB1A9.



This preview shows how white text looks on a background with the Hex color CDB1A9.

Color Blindness Simulation

Color vision deficiency is a very complex topic, and I could not describe the different causes any better than Wikipedia does, so if you want to learn more, you should check out their [article about color blindness](#).

Dichromacy



Original Color
CDB1A9

Protanopia
BDB6AC

Deuteranopia
CEB1A9

Trichromacy



Original Color
CDB1A9

Protanomaly
C3B4AB

Deuteranomaly
CEB1A9

Tritanomaly
CEAFB5

Monochromacy



Original Color
CDB1A9

Achromatopsia
B8B8B8

Achromatomaly
C0B5B3

CSS Examples

Text

The CSS property to change the color of the text to Hex CDB1A9 is called "color". The color property can be set on classes, ids or directly on the HTML element.

This example shows how text in the color #CDB1A9 looks like.

```
.text, #text, p{  
    color:#CDB1A9  
}
```

If you want to add a text shadow in that color use the text-shadow property, you can generate a text shadow directly with our [CSS Text Shadow Generator](#).

Here you see how black text with a 4 pixel #CDB1A9 colored shadow looks like.

```
.shadow{ text-shadow: 4px 4px 2px #CDB1A9
}
```

Border

The CSS property to change the border of an element to Hex CDB1A9 is called "border". The border property can be set on classes, ids or directly on the HTML element.

This example shows the color as border, it can be applied via the CSS property "border" or "border-color".

```
.border, #border, table{ border:4px solid
#CDB1A9 }
```

If only the border color should be changed use the property `border-color`.

```
.border{ border-color:#CDB1A9 }
```

If you want to add a box shadow in that color use:

Here you see how a box with a 4 pixel #CDB1A9 colored shadow looks like.

```
.boxshadow{ -moz-box-shadow:4px 4px 4px  
4px #CDB1A9; -webkit-box-shadow:4px 4px  
4px 4px #CDB1A9; box-shadow:4px 4px 4px  
4px #CDB1A9 }
```

Background

The CSS property to change the background color of an element to Hex CDB1A9 is called "background". The background property can be set on classes, ids or directly on the HTML element.

```
.background, #background, body{  
background:#CDB1A9 }
```

If only the background color should be changed can be used:

```
.background{ background-color:#CDB1A9 }
```

This example shows the color as background, it is applied via the CSS property "background".

To optimize and compress your CSS code, you can use our [online CSS compressor and optimizer](#) based on csstidy. If you want to create a linear or radial gradient as background or border, check our [CSS Gradient Generator](#).

Hey! You found this booklet interesting? Support Converting Colors with the new Membership Option!

The pro membership hides all ads, plus gives you double the colors in the color bucket, and more awesome pro features!

[Learn more, Memberships starting at \\$2.50/m!](#)

**Follow me
on Twitter!**

@ConvertingColor