

Converting Colors

Hex(CDB2A9)

Have a look what the booklet for
Hex(CDB2A9) contains.

Hex(CDB2A9)	3
<i>Conversions</i>	4
<i>Details</i>	6
<i>Harmonies</i>	11
<i>Previews</i>	23
<i>Color Blindness Simulation</i>	26
<i>CSS Examples</i>	29

Color

Hex(CDB2A9)

Conversions

Conversions Part 1

Format	Color
Hex	CDB2A9
RGB	205, 178, 169
RGB Percent	80%, 70%, 66%
CMY	0.1961, 0.3020, 0.3373
CMYK	0.00, 0.13, 0.18, 0.20
HSL	15°, 26%, 73%
HSV	15°, 18%, 80%
XYZ	48.2587, 47.6845, 44.1966
YIQ	185.0470, 18.9810, 2.9250

Conversions

Conversions Part 2

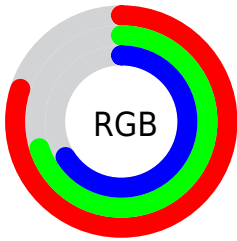
Format	Color
RYB	205, 181, 169
Decimal	13480617
CIELab	74.63, 8.26, 8.17
CIELCh	75, 11.615, 44.681
Yxy	47.6845, 0.3444, 0.3403
Android (android.graphics.Color)	4291670697 (0xFFCDB2A9)
YUV	185.0470, -7.9112, 17.4988
Hunter-Lab	69.0540, 3.9011, 10.3904

Details

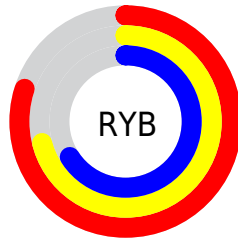
The Hex color **CDB2A9** is a light color, and the websafe version is hex **CC9999**. A complement of this color would be **A9C4CD**, and the grayscale version is **B9B9B9**.

A 20% lighter version of the original color is **FFEAE0**, and **967D75** is the 20% darker color. If you saturate the color by 10%, you get **CDA395**, and if you desaturate by 10%, it is **CDC1BE**.

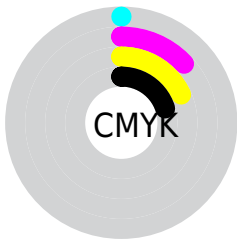
Distribution



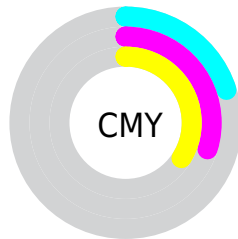
- Red (80%)
- Green (70%)
- Blue (66%)



- Red (80%)
- Yellow (71%)
- Blue (66%)



- Cyan (0%)
- Magenta (13%)
- Yellow (18%)
- Black (20%)



- Cyan (20%)
- Magenta (30%)
- Yellow (34%)

Brightness & Saturation Gradients

These gradients show how the Hex color CDB2A9 changes by changing the brightness by 10 percent. The first figure shows a shift by +10% for each color and the second figure -10%.

Similar to the brightness gradients but the following saturation gradients show a change of the Hex color CDB2A9 by changing the saturation by 10% instead.



CDB2A9



CDB2A9

FFFFFF



B1978F



FFEAE0



967D75

FFFFFFD



7C645C



634C45



4B362F



33201A



200A00



000000



CDB2A9



CDB2A9

 CDA395

 CDC1BE

 CD9380

 CDD1D2

 CD846B

 CDE0E6

 CD7457

 CDF0FB

 CD6542

 CDFFFF

 CD562E

 CD461A

 CD3705

 CD3300

Harmonies

Analogous

The Analogous color harmony consists of three colors that are next to each other on the color wheel.



CFB0B3



CDB2A9



C6B5A3

Triad

The Triadic color harmony groups three colors that are evenly spaced from another and form a triangle on the color wheel.



CDB2A9



A4BEB2



B3B7CC

Complementary

The Complementary color scheme is a pair of colors which are on the opposite of each other on the color wheel.



CDB2A9



A9C4CD

Split Complementary

Split-complementary colors differ from the complementary color scheme. The scheme consists of three colors, the original color and two neighbors of the complement color.



A6BACC



CDB2A9



9DBEBD

Square

The Square scheme is like the rectangle color scheme, but the four colors are evenly spaced on the color wheel.



CDB2A9



AEBCA8



9EBDC6



C0B3C7

Rectangle

The Rectangle color scheme consists of four colors that form a rectangle on the color wheel.



CDB2A9



BFB7A2



9EBDC6



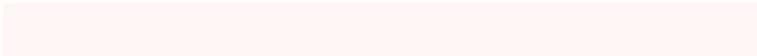
AEB8CD

Sweetspot

The Sweet Spot groups the original color and five complimentary colors.



CDB2A9



FFF5F2



CDA9C4



807A78



000000



808080

Same Dimension

The Same Dimension uses a secret algorithm to generate beautiful new colors.



CDB2A9



FFD7C9



CDC3A9



665E5C



A62900



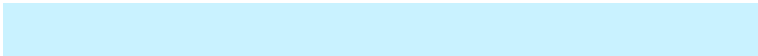
260A00

Inverse Universe

The Inverse Universe completely reimagines the original color for something new.



A9C4CD



C9F2FF



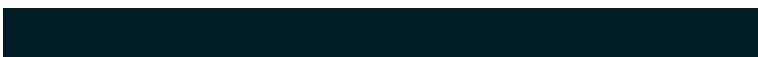
A9B2CD



5C6366



007CA6



001D26

Previews

White Background



This preview shows how the Hex color CDB2A9 looks on a white background.

Color Contrast Check

Large Text (above 18pt) WCAG AA × Fail

Any Text WCAG AA × Fail

Large Text (above 18pt) WCAG AAA × Fail

Any Text WCAG AAA × Fail

Black Background



This preview shows how the Hex color CDB2A9 looks on a black background.

Color Contrast Check

Large Text (above 18pt) WCAG AA ✓ Pass

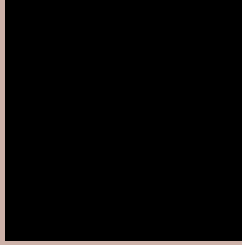
Any Text WCAG AA ✓ Pass

Large Text (above 18pt) WCAG AAA ✓ Pass

Any Text WCAG AAA ✓ Pass

If you want to check with other color combinations, try the [Color Contrast Checker](#).

Hex CDB2A9 Background



This preview shows how black text looks on a background with the Hex color CDB2A9.

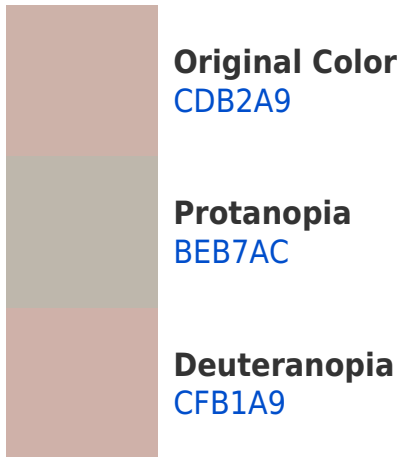


This preview shows how white text looks on a background with the Hex color CDB2A9.

Color Blindness Simulation

Color vision deficiency is a very complex topic, and I could not describe the different causes any better than Wikipedia does, so if you want to learn more, you should check out their [article about color blindness](#).

Dichromacy



Trichromacy



Original Color
CDB2A9

Protanomaly
C3B5AB

Deuteranomaly
CEB1A9

Tritanomaly
CEB0B6

Monochromacy



Original Color
CDB2A9

Achromatopsia
B9B9B9

Achromatomaly
C0B6B3

CSS Examples

Text

The CSS property to change the color of the text to Hex CDB2A9 is called "color". The color property can be set on classes, ids or directly on the HTML element.

This example shows how text in the color #CDB2A9 looks like.

```
.text, #text, p{  
    color:#CDB2A9  
}
```

If you want to add a text shadow in that color use the text-shadow property, you can generate a text shadow directly with our [CSS Text Shadow Generator](#).

Here you see how black text with a 4 pixel #CDB2A9 colored shadow looks like.

```
.shadow{ text-shadow: 4px 4px 2px #CDB2A9
}
```

Border

The CSS property to change the border of an element to Hex CDB2A9 is called "border". The border property can be set on classes, ids or directly on the HTML element.

This example shows the color as border, it can be applied via the CSS property "border" or "border-color".

```
.border, #border, table{ border:4px solid
#CDB2A9 }
```

If only the border color should be changed use the property `border-color`.

```
.border{ border-color:#CDB2A9 }
```

If you want to add a box shadow in that color use:

Here you see how a box with a 4 pixel #CDB2A9 colored shadow looks like.

```
.boxshadow{ -moz-box-shadow:4px 4px 4px  
4px #CDB2A9; -webkit-box-shadow:4px 4px  
4px 4px #CDB2A9; box-shadow:4px 4px 4px  
4px #CDB2A9 }
```

Background

The CSS property to change the background color of an element to Hex CDB2A9 is called "background". The background property can be set on classes, ids or directly on the HTML element.

```
.background, #background, body{  
background:#CDB2A9 }
```

If only the background color should be changed can be used:

```
.background{ background-color:#CDB2A9 }
```

This example shows the color as background, it is applied via the CSS property "background".

To optimize and compress your CSS code, you can use our [online CSS compressor and optimizer](#) based on csstidy. If you want to create a linear or radial gradient as background or border, check our [CSS Gradient Generator](#).

Hey! You found this booklet interesting? Support Converting Colors with the new Membership Option!

The pro membership hides all ads, plus gives you double the colors in the color bucket, and more awesome pro features!

[Learn more, Memberships starting at \\$2.50/m!](#)

**Follow me
on Twitter!**

@ConvertingColor