

Converting Colors

Hex(CDB4AE)

Have a look what the booklet for
Hex(CDB4AE) contains.

Hex(CDB4AE)	3
<i>Conversions</i>	4
<i>Details</i>	6
<i>Harmonies</i>	11
<i>Previews</i>	23
<i>Color Blindness Simulation</i>	26
<i>CSS Examples</i>	29

Color

Hex(CDB4AE)

Conversions

Conversions Part 1

Format	Color
Hex	CDB4AE
RGB	205, 180, 174
RGB Percent	80%, 71%, 68%
CMY	0.1961, 0.2941, 0.3176
CMYK	0.00, 0.12, 0.15, 0.20
HSL	12°, 24%, 74%
HSV	12°, 15%, 80%
XYZ	49.1381, 48.6776, 46.8503
YIQ	186.7910, 16.8260, 3.4340

Conversions

Conversions Part 2

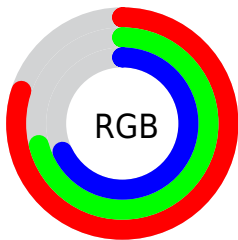
Format	Color
RYB	205, 181, 174
Decimal	13481134
CIELab	75.25, 7.97, 6.34
CIELCh	75, 10.186, 38.481
Yxy	48.6776, 0.3397, 0.3365
Android (android.graphics.Color)	4291671214 (0xFFCDB4AE)
YUV	186.7910, -6.3060, 15.9693
Hunter-Lab	69.7694, 3.6199, 9.0252

Details

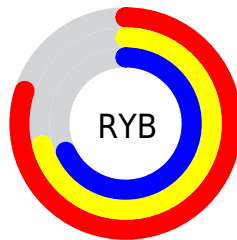
The Hex color **CDB4AE** is a light color, and the websafe version is hex **CCCCCC**. A complement of this color would be **AEC7CD**, and the grayscale version is **BBBBBB**.

A 20% lighter version of the original color is **FFECE5**, and **977F7A** is the 20% darker color. If you saturate the color by 10%, you get **CDA39A**, and if you desaturate by 10%, it is **CDC5C3**.

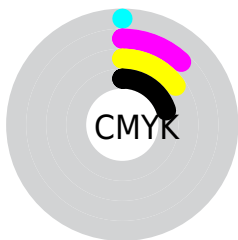
Distribution



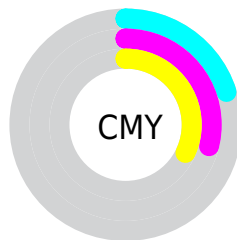
- Red (80%)
- Green (71%)
- Blue (68%)



- Red (80%)
- Yellow (71%)
- Blue (68%)



- Cyan (0%)
- Magenta (12%)
- Yellow (15%)
- Black (20%)



- Cyan (20%)
- Magenta (29%)
- Yellow (32%)

Brightness & Saturation Gradients

These gradients show how the Hex color CDB4AE changes by changing the brightness by 10 percent. The first figure shows a shift by +10% for each color and the second figure -10%.

Similar to the brightness gradients but the following saturation gradients show a change of the Hex color CDB4AE by changing the saturation by 10% instead.

 CDB4AE

 CDB4AE

FFFFFF

 B19993

 FFECE5

 977F7A

 7C6661

 634E49

 4B3733

 34221E

 200C04

 000000

 CDB4AE

 CDB4AE

 CDA39A

 CDC5C3

 CD9385

 CDD5D7

 CD8271

 CDE6EB

 CD725C

 CDF6FF

 CD6148

 CDFFFF

 CD5133

 CD401F

 CD300A

 CD2800

Harmonies

Analogous

The Analogous color harmony consists of three colors that are next to each other on the color wheel.



CDB3B7



CDB4AE



C8B6A8

Triad

The Triadic color harmony groups three colors that are evenly spaced from another and form a triangle on the color wheel.



CDB4AE



AABEB2



B3B9CC

Complementary

The Complementary color scheme is a pair of colors which are on the opposite of each other on the color wheel.



CDB4AE



AEC7CD

Split Complementary

Split-complementary colors differ from the complementary color scheme. The scheme consists of three colors, the original color and two neighbors of the complement color.



A8BCCA



CDB4AE



A3BFBC

Square

The Square scheme is like the rectangle color scheme, but the four colors are evenly spaced on the color wheel.



CDB4AE



B4BCAA



A3BEC5



BFB6C8

Rectangle

The Rectangle color scheme consists of four colors that form a rectangle on the color wheel.



CDB4AE



C2B8A7



A3BEC5



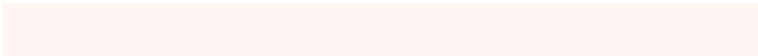
AFBACC

Sweetspot

The Sweet Spot groups the original color and five complimentary colors.



CDB4AE



FFF5F2



CDAEC7



807978



000000



808080

Same Dimension

The Same Dimension uses a secret algorithm to generate beautiful new colors.



CDB4AE



FFDAD1



CDC3AE



665E5C



A62000



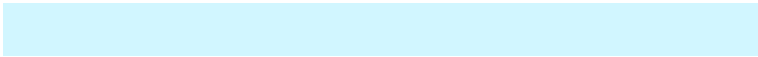
260700

Inverse Universe

The Inverse Universe completely reimagines the original color for something new.



AEC7CD



D1F6FF



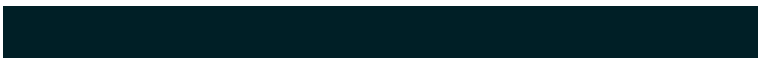
AEB8CD



5C6466



0086A6



001F26

Previews

White Background



This preview shows how the Hex color CDB4AE looks on a white background.

Color Contrast Check

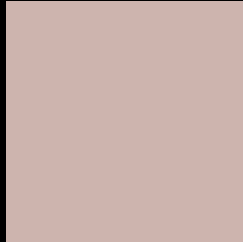
Large Text (above 18pt) WCAG AA × Fail

Any Text WCAG AA × Fail

Large Text (above 18pt) WCAG AAA × Fail

Any Text WCAG AAA × Fail

Black Background



This preview shows how the Hex color CDB4AE looks on a black background.

Color Contrast Check

Large Text (above 18pt) WCAG AA ✓ Pass

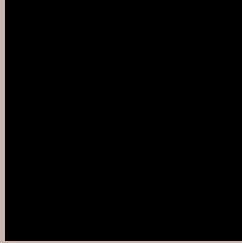
Any Text WCAG AA ✓ Pass

Large Text (above 18pt) WCAG AAA ✓ Pass

Any Text WCAG AAA ✓ Pass

If you want to check with other color combinations, try the [Color Contrast Checker](#).

Hex CDB4AE Background



This preview shows how black text looks on a background with the Hex color CDB4AE.



This preview shows how white text looks on a background with the Hex color CDB4AE.

Color Blindness Simulation

Color vision deficiency is a very complex topic, and I could not describe the different causes any better than Wikipedia does, so if you want to learn more, you should check out their [article about color blindness](#).

Dichromacy

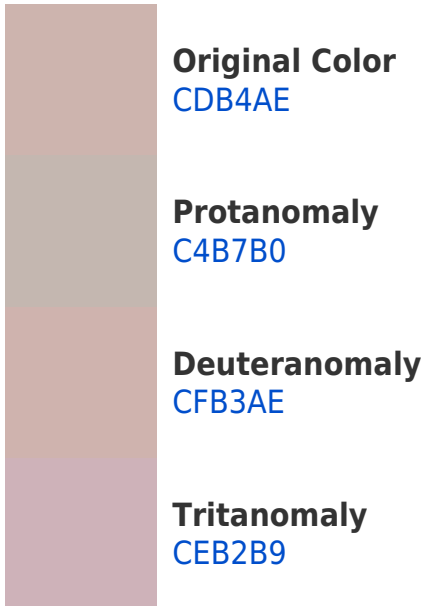


Original Color
CDB4AE

Protanopia
BFB9B1

Deuteranopia
D0B3AE

Trichromacy



Monochromacy



CSS Examples

Text

The CSS property to change the color of the text to Hex CDB4AE is called "color". The color property can be set on classes, ids or directly on the HTML element.

This example shows how text in the color #CDB4AE looks like.

```
.text, #text, p{  
    color:#CDB4AE  
}
```

If you want to add a text shadow in that color use the text-shadow property, you can generate a text shadow directly with our [CSS Text Shadow Generator](#).

Here you see how black text with a 4 pixel #CDB4AE colored shadow looks like.

```
.shadow{ text-shadow: 4px 4px 2px #CDB4AE
}
```

Border

The CSS property to change the border of an element to Hex CDB4AE is called "border". The border property can be set on classes, ids or directly on the HTML element.

This example shows the color as border, it can be applied via the CSS property "border" or "border-color".

```
.border, #border, table{ border:4px solid
#CDB4AE }
```

If only the border color should be changed use the property `border-color`.

```
.border{ border-color:#CDB4AE }
```

If you want to add a box shadow in that color use:

Here you see how a box with a 4 pixel #CDB4AE colored shadow looks like.

```
.boxshadow{ -moz-box-shadow:4px 4px 4px  
4px #CDB4AE; -webkit-box-shadow:4px 4px  
4px 4px #CDB4AE; box-shadow:4px 4px 4px  
4px #CDB4AE }
```

Background

The CSS property to change the background color of an element to Hex CDB4AE is called "background". The background property can be set on classes, ids or directly on the HTML element.

```
.background, #background, body{  
background:#CDB4AE }
```

If only the background color should be changed can be used:

```
.background{ background-color:#CDB4AE }
```

This example shows the color as background, it is applied via the CSS property "background".

To optimize and compress your CSS code, you can use our [online CSS compressor and optimizer](#) based on csstidy. If you want to create a linear or radial gradient as background or border, check our [CSS Gradient Generator](#).

Hey! You found this booklet interesting? Support Converting Colors with the new Membership Option!

The pro membership hides all ads, plus gives you double the colors in the color bucket, and more awesome pro features!

[Learn more, Memberships starting at \\$2.50/m!](#)

**Follow me
on Twitter!**

@ConvertingColor