

Converting Colors

Hex(CDB69B)

Have a look what the booklet for
Hex(CDB69B) contains.

Hex(CDB69B)	3
<i>Conversions</i>	4
<i>Details</i>	6
<i>Harmonies</i>	11
<i>Previews</i>	23
<i>Color Blindness Simulation</i>	26
<i>CSS Examples</i>	29

Color

Hex(CDB69B)

Conversions

Conversions Part 1

Format	Color
Hex	CDB69B
RGB	205, 182, 155
RGB Percent	80%, 71%, 61%
CMY	0.1961, 0.2863, 0.3922
CMYK	0.00, 0.11, 0.24, 0.20
HSL	32°, 33%, 71%
HSV	32°, 24%, 80%
XYZ	47.8212, 48.8016, 37.9095
YIQ	185.7990, 22.3750, -3.5210

Conversions

Conversions Part 2

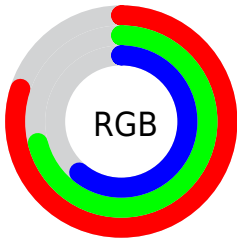
Format	Color
RYB	198, 205, 155
Decimal	13481627
CIELab	75.33, 4.02, 16.76
CIELCh	75, 17.238, 76.503
Yxy	48.8016, 0.3555, 0.3627
Android (android.graphics.Color)	4291671707 (0xFFCDB69B)
YUV	185.7990, -15.1839, 16.8393
Hunter-Lab	69.8581, -0.0601, 16.7261

Details

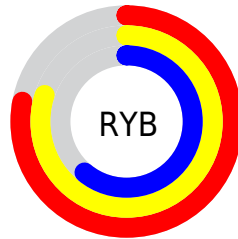
The Hex color **CDB69B** is a light color, and the websafe version is hex **CCCC99**. A complement of this color would be **9BB2CD**, and the grayscale version is **BABABA**.

A 20% lighter version of the original color is **FFEEED2**, and **968168** is the 20% darker color. If you saturate the color by 10%, you get **CDAD86**, and if you desaturate by 10%, it is **CDBFAF**.

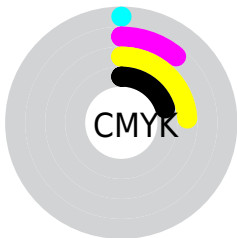
Distribution



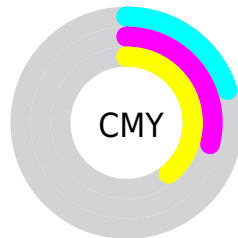
- Red (80%)
- Green (71%)
- Blue (61%)



- Red (78%)
- Yellow (80%)
- Blue (61%)



- Cyan (0%)
- Magenta (11%)
- Yellow (24%)
- Black (20%)



- Cyan (20%)
- Magenta (29%)
- Yellow (39%)

Brightness & Saturation Gradients

These gradients show how the Hex color CDB69B changes by changing the brightness by 10 percent. The first figure shows a shift by +10% for each color and the second figure -10%.

Similar to the brightness gradients but the following saturation gradients show a change of the Hex color CDB69B by changing the saturation by 10% instead.

 CDB69B

 CDB69B

FFFFFF

 B19B81

 FFEED2

 968168

 FFFFEE

 7C6850

 625039

 4A3923

 33240E

 1D0F00

 000000

 CDB69B

 CDB69B

 CDAD86

 CDBFAF

 CDA372

 CDC9C4

 CD9A5E

 CDD2D8

 CD9049

 CDDCED

 CD8734

 CDE5FF

 CD7D20

 CDEFFF

 CD740B

 CDF8FF

 CD6F00

 CDFFFF

Harmonies

Analogous

The Analogous color harmony consists of three colors that are next to each other on the color wheel.



D8B1A3



CDB69B



BDBB9B

Triad

The Triadic color harmony groups three colors that are evenly spaced from another and form a triangle on the color wheel.



CDB69B



91C3C2



C7B3CF

Complementary

The Complementary color scheme is a pair of colors which are on the opposite of each other on the color wheel.



CDB69B



9BB2CD

Split Complementary

Split-complementary colors differ from the complementary color scheme. The scheme consists of three colors, the original color and two neighbors of the complement color.



B3B8D8



CDB69B



92C1D0

Square

The Square scheme is like the rectangle color scheme, but the four colors are evenly spaced on the color wheel.



CDB69B



9AC2B2



9FBDD8



D5AFC1

Rectangle

The Rectangle color scheme consists of four colors that form a rectangle on the color wheel.



CDB69B



B1BEA0



9FBDD8



C1B4D3

Sweetspot

The Sweet Spot groups the original color and five complimentary colors.



CDB69B



FFF7ED



CD9BB2



807B75



000000



808080

Same Dimension

The Same Dimension uses a secret algorithm to generate beautiful new colors.



CDB69B



FFDDB5



CBCD9B



66615C



A65A00



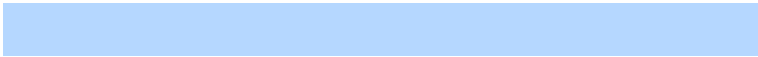
261500

Inverse Universe

The Inverse Universe completely reimagines the original color for something new.



9BB2CD



B5D7FF



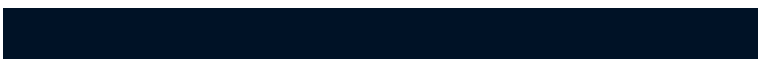
9D9BCD



5C6066



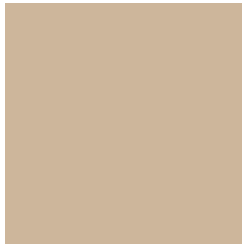
004CA6



001226

Previews

White Background



This preview shows how the Hex color CDB69B looks on a white background.

Color Contrast Check

Large Text (above 18pt) WCAG AA × Fail

Any Text WCAG AA × Fail

Large Text (above 18pt) WCAG AAA × Fail

Any Text WCAG AAA × Fail

Black Background



This preview shows how the Hex color CDB69B looks on a black background.

Color Contrast Check

Large Text (above 18pt) WCAG AA ✓ Pass

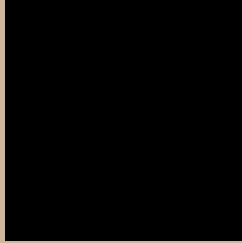
Any Text WCAG AA ✓ Pass

Large Text (above 18pt) WCAG AAA ✓ Pass

Any Text WCAG AAA ✓ Pass

If you want to check with other color combinations, try the [Color Contrast Checker](#).

Hex CDB69B Background



This preview shows how black text looks on a background with the Hex color CDB69B.



This preview shows how white text looks on a background with the Hex color CDB69B.

Color Blindness Simulation

Color vision deficiency is a very complex topic, and I could not describe the different causes any better than Wikipedia does, so if you want to learn more, you should check out their [article about color blindness](#).

Dichromacy



Original Color
CDB69B

Protanopia
C4B99D

Deuteranopia
D6B39C



Tritanopia
D1B1BF

Trichromacy



Monochromacy



CSS Examples

Text

The CSS property to change the color of the text to Hex CDB69B is called "color". The color property can be set on classes, ids or directly on the HTML element.

This example shows how text in the color #CDB69B looks like.

```
.text, #text, p{  
    color:#CDB69B  
}
```

If you want to add a text shadow in that color use the text-shadow property, you can generate a text shadow directly with our [CSS Text Shadow Generator](#).

Here you see how black text with a 4 pixel #CDB69B colored shadow looks like.

```
.shadow{ text-shadow: 4px 4px 2px #CDB69B
}
```

Border

The CSS property to change the border of an element to Hex CDB69B is called "border". The border property can be set on classes, ids or directly on the HTML element.

This example shows the color as border, it can be applied via the CSS property "border" or "border-color".

```
.border, #border, table{ border:4px solid
#CDB69B }
```

If only the border color should be changed use the property `border-color`.

```
.border{ border-color:#CDB69B }
```

If you want to add a box shadow in that color use:

Here you see how a box with a 4 pixel #CDB69B colored shadow looks like.

```
.boxshadow{ -moz-box-shadow:4px 4px 4px  
4px #CDB69B; -webkit-box-shadow:4px 4px  
4px 4px #CDB69B; box-shadow:4px 4px 4px  
4px #CDB69B }
```

Background

The CSS property to change the background color of an element to Hex CDB69B is called "background". The background property can be set on classes, ids or directly on the HTML element.

```
.background, #background, body{  
background:#CDB69B }
```

If only the background color should be changed can be used:

```
.background{ background-color:#CDB69B }
```

This example shows the color as background, it is applied via the CSS property "background".

To optimize and compress your CSS code, you can use our [online CSS compressor and optimizer](#) based on csstidy. If you want to create a linear or radial gradient as background or border, check our [CSS Gradient Generator](#).

Hey! You found this booklet interesting? Support Converting Colors with the new Membership Option!

The pro membership hides all ads, plus gives you double the colors in the color bucket, and more awesome pro features!

[Learn more, Memberships starting at \\$2.50/m!](#)

**Follow me
on Twitter!**

@ConvertingColor