

Converting Colors

Hex(CDB7A8)

Have a look what the booklet for
Hex(CDB7A8) contains.

Hex(CDB7A8)	3
<i>Conversions</i>	4
<i>Details</i>	6
<i>Harmonies</i>	11
<i>Previews</i>	23
<i>Color Blindness Simulation</i>	26
<i>CSS Examples</i>	29

Color

Hex(CDB7A8)

Conversions

Conversions Part 1

Format	Color
Hex	CDB7A8
RGB	205, 183, 168
RGB Percent	80%, 72%, 66%
CMY	0.1961, 0.2824, 0.3412
CMYK	0.00, 0.11, 0.18, 0.20
HSL	24°, 27%, 73%
HSV	24°, 18%, 80%
XYZ	49.1782, 49.6733, 44.0417
YIQ	187.8680, 17.9270, -0.0010

Conversions

Conversions Part 2

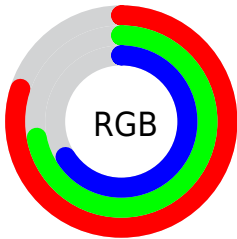
Format	Color
R _Y B	205, 193, 168
Decimal	13481896
CIE Lab	75.87, 5.42, 10.48
CIE LCh	76, 11.802, 62.661
Yxy	49.6733, 0.3442, 0.3476
Android (android.graphics.Color)	4291671976 (0xFFCDB7A8)
YUV	187.8680, -9.7949, 15.0248
Hunter-Lab	70.4793, 1.2130, 12.2858

Details

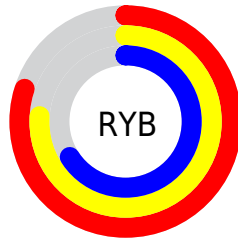
The Hex color **CDB7A8** is a light color, and the websafe version is hex **CCCCCC**. A complement of this color would be **A8BECD**, and the grayscale version is **BCBCBC**.

A 20% lighter version of the original color is **FFEFDF**, and **968274** is the 20% darker color. If you saturate the color by 10%, you get **CDAB94**, and if you desaturate by 10%, it is **CDC3BC**.

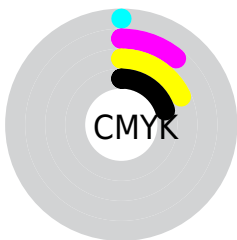
Distribution



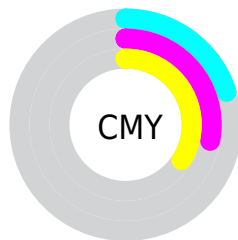
- Red (80%)
- Green (72%)
- Blue (66%)



- Red (80%)
- Yellow (76%)
- Blue (66%)



- Cyan (0%)
- Magenta (11%)
- Yellow (18%)
- Black (20%)



- Cyan (20%)
- Magenta (28%)
- Yellow (34%)

Brightness & Saturation Gradients

These gradients show how the Hex color CDB7A8 changes by changing the brightness by 10 percent. The first figure shows a shift by +10% for each color and the second figure -10%.

Similar to the brightness gradients but the following saturation gradients show a change of the Hex color CDB7A8 by changing the saturation by 10% instead.

 CDB7A8

 CDB7A8

FFFFFF

 B19C8E

 FFEFD5

 968274

FFFFFFC

 7C695B

 635144

 4B3A2E

 342419

 200F00

 000000

 CDB7A8

 CDB7A8

 CDAB94

 CDC3BC

 CD9F7F

 CDCFD1

 CD926B

 CDDCE5

 CD8656

 CDE8FA

 CD7A41

 CDF4FF

 CD6E2D

 CDFFFF

 CD6218

 CD5504

 CD5300

Harmonies

Analogous

The Analogous color harmony consists of three colors that are next to each other on the color wheel.



D2B4B0



CDB7A8



C3BBA5

Triad

The Triadic color harmony groups three colors that are evenly spaced from another and form a triangle on the color wheel.



CDB7A8



A2C2BC



BEB8CD

Complementary

The Complementary color scheme is a pair of colors which are on the opposite of each other on the color wheel.



CDB7A8



A8BECD

Split Complementary

Split-complementary colors differ from the complementary color scheme. The scheme consists of three colors, the original color and two neighbors of the complement color.



B1BCD0



CDB7A8



A0C1C6

Square

The Square scheme is like the rectangle color scheme, but the four colors are evenly spaced on the color wheel.



CDB7A8



ABC0B1



A5BFCE



CAB5C5

Rectangle

The Rectangle color scheme consists of four colors that form a rectangle on the color wheel.



CDB7A8



BBBDA7



A5BFCE



BAB9CF

Sweetspot

The Sweet Spot groups the original color and five complimentary colors.



CDB7A8



FFF7F2



CDA8BE



807B78



000000



808080

Same Dimension

The Same Dimension uses a secret algorithm to generate beautiful new colors.



CDB7A8



FFDEC7



CDC9A8



66605C



A64300



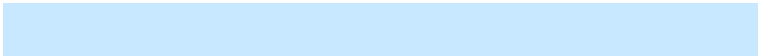
261000

Inverse Universe

The Inverse Universe completely reimagines the original color for something new.



A8BECD



C7E8FF



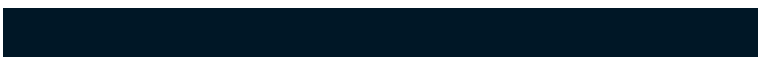
A8ACCD



5C6266



0063A6



001726

Previews

White Background



This preview shows how the Hex color CDB7A8 looks on a white background.

Color Contrast Check

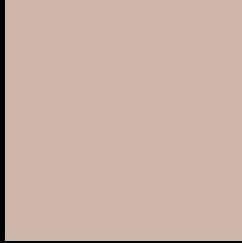
Large Text (above 18pt) WCAG AA × Fail

Any Text WCAG AA × Fail

Large Text (above 18pt) WCAG AAA × Fail

Any Text WCAG AAA × Fail

Black Background



This preview shows how the Hex color CDB7A8 looks on a black background.

Color Contrast Check

Large Text (above 18pt) WCAG AA ✓ Pass

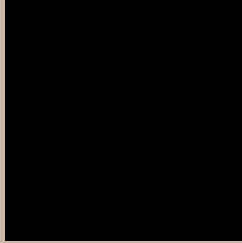
Any Text WCAG AA ✓ Pass

Large Text (above 18pt) WCAG AAA ✓ Pass

Any Text WCAG AAA ✓ Pass

If you want to check with other color combinations, try the [Color Contrast Checker](#).

Hex CDB7A8 Background



This preview shows how black text looks on a background with the Hex color CDB7A8.



This preview shows how white text looks on a background with the Hex color CDB7A8.

Color Blindness Simulation

Color vision deficiency is a very complex topic, and I could not describe the different causes any better than Wikipedia does, so if you want to learn more, you should check out their [article about color blindness](#).

Dichromacy



Original Color
CDB7A8

Protanopia
C2BAAA

Deuteranopia
D4B4A9



Tritanopia
D0B3C1

Trichromacy



Original Color
CDB7A8

Protanomaly
C6B9A9

Deuteranomaly
D1B5A9

Tritanomaly
CFB4B8

Monochromacy



Original Color
CDB7A8

Achromatopsia
BCBCBC

Achromatomaly
C2BAB5

CSS Examples

Text

The CSS property to change the color of the text to Hex CDB7A8 is called "color". The color property can be set on classes, ids or directly on the HTML element.

This example shows how text in the color #CDB7A8 looks like.

```
.text, #text, p{  
    color:#CDB7A8  
}
```

If you want to add a text shadow in that color use the text-shadow property, you can generate a text shadow directly with our [CSS Text Shadow Generator](#).

Here you see how black text with a 4 pixel #CDB7A8 colored shadow looks like.

```
.shadow{ text-shadow: 4px 4px 2px #CDB7A8
}
```

Border

The CSS property to change the border of an element to Hex CDB7A8 is called "border". The border property can be set on classes, ids or directly on the HTML element.

This example shows the color as border, it can be applied via the CSS property "border" or "border-color".

```
.border, #border, table{ border:4px solid
#CDB7A8 }
```

If only the border color should be changed use the property `border-color`.

```
.border{ border-color:#CDB7A8 }
```

If you want to add a box shadow in that color use:

Here you see how a box with a 4 pixel #CDB7A8 colored shadow looks like.

```
.boxshadow{ -moz-box-shadow:4px 4px 4px  
4px #CDB7A8; -webkit-box-shadow:4px 4px  
4px 4px #CDB7A8; box-shadow:4px 4px 4px  
4px #CDB7A8 }
```

Background

The CSS property to change the background color of an element to Hex CDB7A8 is called "background". The background property can be set on classes, ids or directly on the HTML element.

```
.background, #background, body{  
background:#CDB7A8 }
```

If only the background color should be changed can be used:

```
.background{ background-color:#CDB7A8 }
```

This example shows the color as background, it is applied via the CSS property "background".

To optimize and compress your CSS code, you can use our [online CSS compressor and optimizer](#) based on csstidy. If you want to create a linear or radial gradient as background or border, check our [CSS Gradient Generator](#).

Hey! You found this booklet interesting? Support Converting Colors with the new Membership Option!

The pro membership hides all ads, plus gives you double the colors in the color bucket, and more awesome pro features!

[Learn more, Memberships starting at \\$2.50/m!](#)

**Follow me
on Twitter!**

@ConvertingColor