

Converting Colors

Hex(CDB8AB)

Have a look what the booklet for
Hex(CDB8AB) contains.

Hex(CDB8AB)	3
<i>Conversions</i>	4
<i>Details</i>	6
<i>Harmonies</i>	11
<i>Previews</i>	23
<i>Color Blindness Simulation</i>	26
<i>CSS Examples</i>	29

Color

Hex(CDB8AB)

Conversions

Conversions Part 1

Format	Color
Hex	CDB8AB
RGB	205, 184, 171
RGB Percent	80%, 72%, 67%
CMY	0.1961, 0.2784, 0.3294
CMYK	0.00, 0.10, 0.17, 0.20
HSL	23°, 25%, 74%
HSV	23°, 17%, 80%
XYZ	49.6680, 50.2004, 45.5999
YIQ	188.7970, 16.6890, 0.4090

Conversions

Conversions Part 2

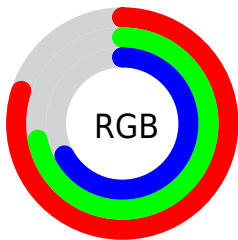
Format	Color
RYB	205, 192, 171
Decimal	13482155
CIELab	76.19, 5.35, 9.32
CIELCh	76, 10.745, 60.126
Yxy	50.2004, 0.3414, 0.3451
Android (android.graphics.Color)	4291672235 (0xFFCDB8AB)
YUV	188.7970, -8.7739, 14.2100
Hunter-Lab	70.8522, 1.1386, 11.4380

Details

The Hex color **CDB8AB** is a light color, and the websafe version is hex **CCCCCC**. A complement of this color would be **ABC0CD**, and the grayscale version is **BDBDBD**.

A 20% lighter version of the original color is **FFF0E2**, and **978377** is the 20% darker color. If you saturate the color by 10%, you get **CDAB97**, and if you desaturate by 10%, it is **CDC5C0**.

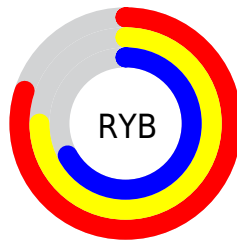
Distribution



Red (80%)

Green (72%)

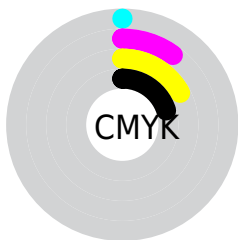
Blue (67%)



Red (80%)

Yellow (75%)

Blue (67%)

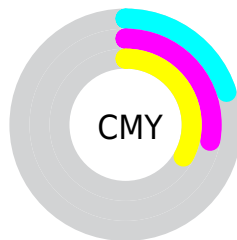


Cyan (0%)

Magenta (10%)

Yellow (17%)

Black (20%)



Cyan (20%)

Magenta (28%)

Yellow (33%)

Brightness & Saturation Gradients

These gradients show how the Hex color CDB8AB changes by changing the brightness by 10 percent. The first figure shows a shift by +10% for each color and the second figure -10%.

Similar to the brightness gradients but the following saturation gradients show a change of the Hex color CDB8AB by changing the saturation by 10% instead.



CDB8AB



CDB8AB

FFFFFF



B19D90



FFF0E2



978377



7C6A5E



635246



4B3B30



34251B



201000



000000



CDB8AB



CDB8AB

CDAB97

CDC5C0

CD9F82

CDD1D4

CD926E

CDDEE9

CD8559

CDEBFD

CD7945

CDF7FF

CD6C30

CDFFFF

CD5F1B

CD5307

CD4E00

Harmonies

Analogous

The Analogous color harmony consists of three colors that are next to each other on the color wheel.



D1B6B2



CDB8AB



C4BBA8

Triad

The Triadic color harmony groups three colors that are evenly spaced from another and form a triangle on the color wheel.



CDB8AB



A6C2BC



BEB9CD

Complementary

The Complementary color scheme is a pair of colors which are on the opposite of each other on the color wheel.



CDB8AB



ABC0CD

Split Complementary

Split-complementary colors differ from the complementary color scheme. The scheme consists of three colors, the original color and two neighbors of the complement color.



B2BDCF



CDB8AB



A3C1C5

Square

The Square scheme is like the rectangle color scheme, but the four colors are evenly spaced on the color wheel.



CDB8AB



AEC1B2



A8C0CD



C9B7C6

Rectangle

The Rectangle color scheme consists of four colors that form a rectangle on the color wheel.



CDB8AB



BDBDA9



A8C0CD



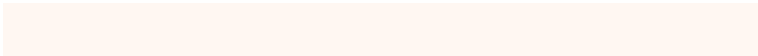
BABACE

Sweetspot

The Sweet Spot groups the original color and five complimentary colors.



CDB8AB



FFF7F2



CDABC1



807B78



000000



808080

Same Dimension

The Same Dimension uses a secret algorithm to generate beautiful new colors.



CDB8AB



FFE0CC



CDC8AB



66605C



A63F00



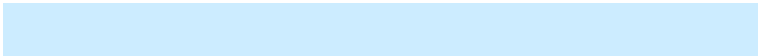
260F00

Inverse Universe

The Inverse Universe completely reimagines the original color for something new.



ABCOCD



CCECFE



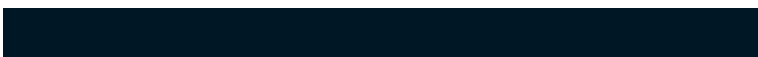
ABB0CD



5C6266



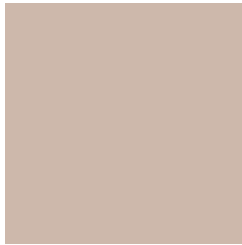
0066A6



001826

Previews

White Background



This preview shows how the Hex color CDB8AB looks on a white background.

Color Contrast Check

Large Text (above 18pt) WCAG AA × Fail

Any Text WCAG AA × Fail

Large Text (above 18pt) WCAG AAA × Fail

Any Text WCAG AAA × Fail

Black Background



This preview shows how the Hex color CDB8AB looks on a black background.

Color Contrast Check

Large Text (above 18pt) WCAG AA ✓ Pass

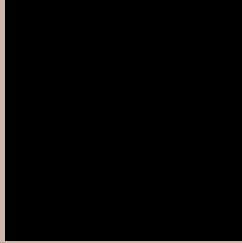
Any Text WCAG AA ✓ Pass

Large Text (above 18pt) WCAG AAA ✓ Pass

Any Text WCAG AAA ✓ Pass

If you want to check with other color combinations, try the [Color Contrast Checker](#).

Hex CDB8AB Background



This preview shows how black text looks on a background with the Hex color CDB8AB.

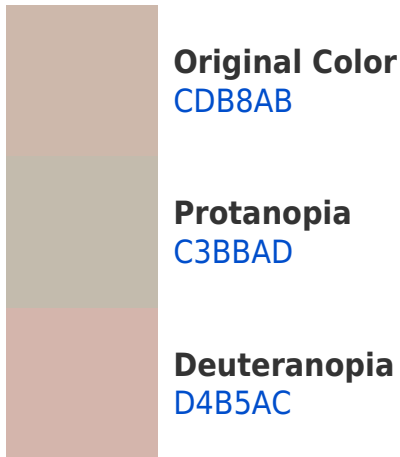


This preview shows how white text looks on a background with the Hex color CDB8AB.

Color Blindness Simulation

Color vision deficiency is a very complex topic, and I could not describe the different causes any better than Wikipedia does, so if you want to learn more, you should check out their [article about color blindness](#).

Dichromacy





Tritanopia
D0B4C3

Trichromacy



Original Color
CDB8AB

Protanomaly
C7BAAC

Deuteranomaly
D1B6AC

Tritanomaly
CFB5BA

Monochromacy



Original Color
CDB8AB

Achromatopsia
BDBDBD

Achromatomaly
C3BBB6

CSS Examples

Text

The CSS property to change the color of the text to Hex CDB8AB is called "color". The color property can be set on classes, ids or directly on the HTML element.

This example shows how text in the color #CDB8AB looks like.

```
.text, #text, p{  
    color:#CDB8AB  
}
```

If you want to add a text shadow in that color use the text-shadow property, you can generate a text shadow directly with our [CSS Text Shadow Generator](#).

Here you see how black text with a 4 pixel #CDB8AB colored shadow looks like.

```
.shadow{ text-shadow: 4px 4px 2px #CDB8AB
}
```

Border

The CSS property to change the border of an element to Hex CDB8AB is called "border". The border property can be set on classes, ids or directly on the HTML element.

This example shows the color as border, it can be applied via the CSS property "border" or "border-color".

```
.border, #border, table{ border:4px solid
#CDB8AB }
```

If only the border color should be changed use the property `border-color`.

```
.border{ border-color:#CDB8AB }
```

If you want to add a box shadow in that color use:

Here you see how a box with a 4 pixel #CDB8AB colored shadow looks like.

```
.boxshadow{ -moz-box-shadow:4px 4px 4px  
4px #CDB8AB; -webkit-box-shadow:4px 4px  
4px 4px #CDB8AB; box-shadow:4px 4px 4px  
4px #CDB8AB }
```

Background

The CSS property to change the background color of an element to Hex CDB8AB is called "background". The background property can be set on classes, ids or directly on the HTML element.

```
.background, #background, body{  
background:#CDB8AB }
```

If only the background color should be changed can be used:

```
.background{ background-color:#CDB8AB }
```

This example shows the color as background, it is applied via the CSS property "background".

To optimize and compress your CSS code, you can use our [online CSS compressor and optimizer](#) based on csstidy. If you want to create a linear or radial gradient as background or border, check our [CSS Gradient Generator](#).

Hey! You found this booklet interesting? Support Converting Colors with the new Membership Option!

The pro membership hides all ads, plus gives you double the colors in the color bucket, and more awesome pro features!

[Learn more, Memberships starting at \\$2.50/m!](#)

**Follow me
on Twitter!**

@ConvertingColor