

Converting Colors

Hex(CDBAB6)

Have a look what the booklet for
Hex(CDBAB6) contains.

Hex(CDBAB6) 3

Conversions 4

Details 6

Harmonies 11

Previews 23

Color Blindness Simulation 26

CSS Examples 29

Color

Hex(CDBAB6)

Conversions

Conversions Part 1	
Format	Color
Hex	CDBAB6
RGB	205, 186, 182
RGB Percent	80%, 73%, 71%
CMY	0.1961, 0.2706, 0.2863
CMYK	0.00, 0.09, 0.11, 0.20
HSL	10°, 19%, 76%
HSV	10°, 11%, 80%
XYZ	51.1792, 51.4743, 51.4941
YIQ	191.2250, 12.6080, 2.7840

Conversions

Conversions Part 2

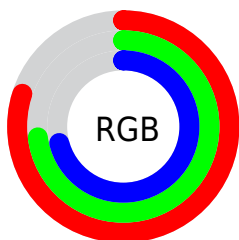
Format	Color
RYB	205, 187, 182
Decimal	13482678
CIELab	76.97, 6.06, 4.46
CIELCh	77, 7.528, 36.359
Yxy	51.4743, 0.3320, 0.3339
Android (android.graphics.Color)	4291672758 (0xFFCDBAB6)
YUV	191.2250, -4.5479, 12.0807
Hunter-Lab	71.7456, 1.7769, 7.6677

Details

The Hex color **CDBAB6** is a light color, and the websafe version is hex **CCCCCC**. A complement of this color would be **B6C9CD**, and the grayscale version is **BFBFBF**.

A 20% lighter version of the original color is **FFF2EE**, and **978581** is the 20% darker color. If you saturate the color by 10%, you get **CDA9A2**, and if you desaturate by 10%, it is **CDCBCB**.

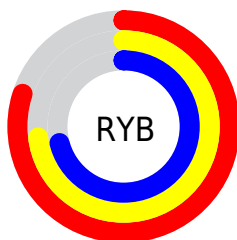
Distribution



Red (80%)

Green (73%)

Blue (71%)



Red (80%)

Yellow (73%)

Blue (71%)

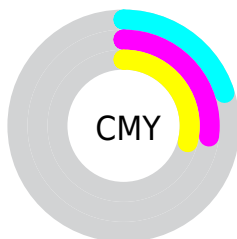


Cyan (0%)

Magenta (9%)

Yellow (11%)

Black (20%)



Cyan (20%)

Magenta (27%)

Yellow (29%)

Brightness & Saturation Gradients

These gradients show how the Hex color CDBAB6 changes by changing the brightness by 10 percent. The first figure shows a shift by +10% for each color and the second figure -10%.

Similar to the brightness gradients but the following saturation gradients show a change of the Hex color CDBAB6 by changing the saturation by 10% instead.

 CDBAB6

 CDBAB6

FFFFFF

 B19F9B

 FFF2EE

 978581

 7D6C68

 645350

 4C3C39

 352724

 20120E

 000000

 CDBAB6

 CDBAB6

 CDA9A2

 CDCBCB

 CD988D

 CDDCDF

 CD8779

 CEDEF3

 CD7664

 CDFEFF

 CD6550

 CDFFFF

 CD543B

 CD4327

 CD3312

 CD2400

Harmonies

Analogous

The Analogous color harmony consists of three colors that are next to each other on the color wheel.



CDB9BD



CDBAB6



C9BCB1

Triad

The Triadic color harmony groups three colors that are evenly spaced from another and form a triangle on the color wheel.



CDBAB6



B3C2B8



B9BECC

Complementary

The Complementary color scheme is a pair of colors which are on the opposite of each other on the color wheel.



CDBAB6



B6C9CD

Split Complementary

Split-complementary colors differ from the complementary color scheme. The scheme consists of three colors, the original color and two neighbors of the complement color.



B1C0CA



CDBAB6



AEC2BF

Square

The Square scheme is like the rectangle color scheme, but the four colors are evenly spaced on the color wheel.



CDBAB6



BAC0B3



ADC2C6



C1BCC9

Rectangle

The Rectangle color scheme consists of four colors that form a rectangle on the color wheel.



CDBAB6



C5BDB0



ADC2C6



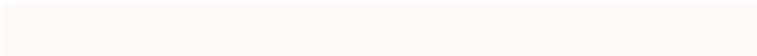
B6BFCC

Sweetspot

The Sweet Spot groups the original color and five complimentary colors.



CDBAB6



FFF9F7



CDB6C9



807B7A



000000



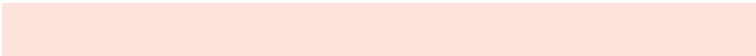
808080

Same Dimension

The Same Dimension uses a secret algorithm to generate beautiful new colors.



CDBAB6



FFE4DE



CDC5B6



665E5C



A61D00



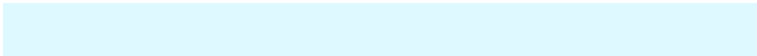
260700

Inverse Universe

The Inverse Universe completely reimagines the original color for something new.



B6C9CD



DEF9FF



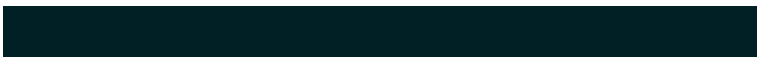
B6BECD



5C6466



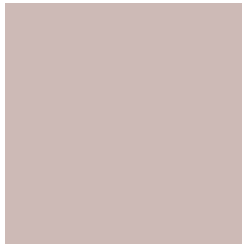
0089A6



002026

Previews

White Background



This preview shows how the Hex color CDBAB6 looks on a white background.

Color Contrast Check

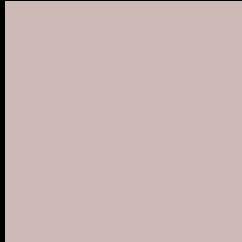
Large Text (above 18pt) WCAG AA × Fail

Any Text WCAG AA × Fail

Large Text (above 18pt) WCAG AAA × Fail

Any Text WCAG AAA × Fail

Black Background



This preview shows how the Hex color CDBAB6 looks on a black background.

Color Contrast Check

Large Text (above 18pt) WCAG AA ✓ Pass

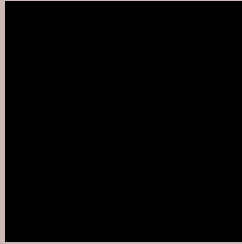
Any Text WCAG AA ✓ Pass

Large Text (above 18pt) WCAG AAA ✓ Pass

Any Text WCAG AAA ✓ Pass

If you want to check with other color combinations, try the [Color Contrast Checker](#).

Hex CDBAB6 Background



This preview shows how black text looks on a background with the Hex color CDBAB6.



This preview shows how white text looks on a background with the Hex color CDBAB6.

Color Blindness Simulation

Color vision deficiency is a very complex topic, and I could not describe the different causes any better than Wikipedia does, so if you want to learn more, you should check out their [article about color blindness](#).

Dichromacy



Original Color
CDBAB6

Protanopia
C3BDB8

Deuteranopia
D3B8B6

Trichromacy



Monochromacy



CSS Examples

Text

The CSS property to change the color of the text to Hex CDBAB6 is called "color". The color property can be set on classes, ids or directly on the HTML element.

This example shows how text in the color #CDBAB6 looks like.

```
.text, #text, p{  
    color:#CDBAB6  
}
```

If you want to add a text shadow in that color use the text-shadow property, you can generate a text shadow directly with our [CSS Text Shadow Generator](#).

Here you see how black text with a 4 pixel #CDBAB6 colored shadow looks like.

```
.shadow{ text-shadow: 4px 4px 2px #CDBAB6
}
```

Border

The CSS property to change the border of an element to Hex CDBAB6 is called "border". The border property can be set on classes, ids or directly on the HTML element.

This example shows the color as border, it can be applied via the CSS property "border" or "border-color".

```
.border, #border, table{ border:4px solid
#CDBAB6 }
```

If only the border color should be changed use the property border-color.

```
.border{ border-color:#CDBAB6 }
```

If you want to add a box shadow in that color use:

Here you see how a box with a 4 pixel #CDBAB6 colored shadow looks like.

```
.boxshadow{ -moz-box-shadow:4px 4px 4px  
4px #CDBAB6; -webkit-box-shadow:4px 4px  
4px 4px #CDBAB6; box-shadow:4px 4px 4px  
4px #CDBAB6 }
```

Background

The CSS property to change the background color of an element to Hex CDBAB6 is called "background". The background property can be set on classes, ids or directly on the HTML element.

```
.background, #background, body{  
background:#CDBAB6 }
```

If only the background color should be changed can be used:

```
.background{ background-color:#CDBAB6 }
```

This example shows the color as background, it is applied via the CSS property "background".

To optimize and compress your CSS code, you can use our [online CSS compressor and optimizer](#) based on csstidy. If you want to create a linear or radial gradient as background or border, check our [CSS Gradient Generator](#).

Hey! You found this booklet
interesting? Support Converting
Colors with the new Membership
Option!

The pro membership hides all ads, plus gives you
double the colors in the color bucket, and more
awesome pro features!

[Learn more, Memberships starting at \\$2.50/m!](#)

**Follow me
on Twitter!**

@ConvertingColor