

Converting Colors

Hex(CDBDC8)

Have a look what the booklet for
Hex(CDBDC8) contains.

Hex(CDBDC8)	3
<i>Conversions</i>	4
<i>Details</i>	6
<i>Harmonies</i>	11
<i>Previews</i>	23
<i>Color Blindness Simulation</i>	26
<i>CSS Examples</i>	29

Color

Hex(CDBDC8)

Conversions

Conversions Part 1

Format	Color
Hex	CDBDC8
RGB	205, 189, 200
RGB Percent	80%, 74%, 78%
CMY	0.1961, 0.2588, 0.2157
CMYK	0.00, 0.08, 0.02, 0.20
HSL	319°, 14%, 77%
HSV	319°, 8%, 80%
XYZ	53.7998, 53.5445, 62.1431
YIQ	195.0380, 6.0050, 6.8130

Conversions

Conversions Part 2

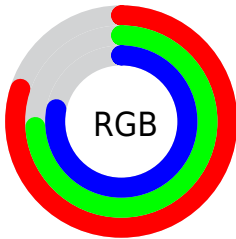
Format	Color
R_{YB}	205, 189, 200
Decimal	13483464
CIE Lab	78.20, 7.59, -3.49
CIE LCh	78, 8.354, 335.289
Yxy	53.5445, 0.3174, 0.3159
Android (android.graphics.Color)	4291673544 (0xFFCDBDC8)
YUV	195.0380, 2.4463, 8.7367
Hunter-Lab	73.1741, 3.1839, 0.8698

Details

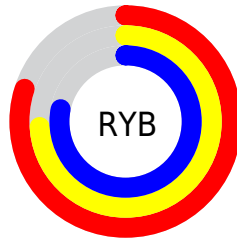
The Hex color **CDBDC8** is a light color, and the websafe version is hex **CCCCCC**. A complement of this color would be **BDCDC2**, and the grayscale version is **C3C3C3**.

A 20% lighter version of the original color is **FFF5FF**, and **978892** is the 20% darker color. If you saturate the color by 10%, you get **CDA9C2**, and if you desaturate by 10%, it is **CDD2CE**.

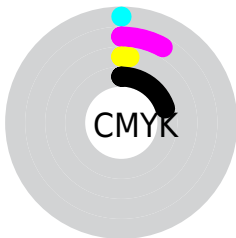
Distribution



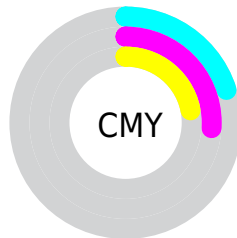
- Red (80%)
- Green (74%)
- Blue (78%)



- Red (80%)
- Yellow (74%)
- Blue (78%)



- Cyan (0%)
- Magenta (8%)
- Yellow (2%)
- Black (20%)



- Cyan (20%)
- Magenta (26%)
- Yellow (22%)

Brightness & Saturation Gradients

These gradients show how the Hex color CDBDC8 changes by changing the brightness by 10 percent. The first figure shows a shift by +10% for each color and the second figure -10%.

Similar to the brightness gradients but the following saturation gradients show a change of the Hex color CDBDC8 by changing the saturation by 10% instead.



CDBDC8

FFFFFF



FFF5FF



CDBDC8



B2A2AD



978892



7D6E78



645660



4C3F48



352932



20141D



000001



000000

 CDBDC8

 CDBDC8

 CDA9C2

 CDD2CE

 CD94BB

 CDE6D5

 CD80B5

 CDFBDB

 CD6BAE

 CDFFE2

 CD57A8

 CDFFE8

 CD42A2

 CDFFEE

 CD2D9B

 CDFFF5

 CD1995

 CDFFFB

 CD048E

 CDFFFF

Harmonies

Analogous

The Analogous color harmony consists of three colors that are next to each other on the color wheel.



C5BFCE



CDBDC8



D2BCC0

Triad

The Triadic color harmony groups three colors that are evenly spaced from another and form a triangle on the color wheel.



CDBDC8



C7C1B2



AFC6CA

Complementary

The Complementary color scheme is a pair of colors which are on the opposite of each other on the color wheel.



CDBDC8



BDCDC2

Split Complementary

Split-complementary colors differ from the complementary color scheme. The scheme consists of three colors, the original color and two neighbors of the complement color.



B0C6C2



CDBDC8



BEC4B5

Square

The Square scheme is like the rectangle color scheme, but the four colors are evenly spaced on the color wheel.



CDBDC8



CEFBF4



B5C5BB



B3C4CF

Rectangle

The Rectangle color scheme consists of four colors that form a rectangle on the color wheel.



CDBDC8



D3BDBB



B5C5BB



AEC6C8

Sweetspot

The Sweet Spot groups the original color and five complimentary colors.



CDBDC8



FFFAFD



C2BDCD



807D7F



000000



808080

Same Dimension

The Same Dimension uses a secret algorithm to generate beautiful new colors.



CDBDC8



FFE8F8



CDBDC0



665C63



A60072



26001A

Inverse Universe

The Inverse Universe completely reimagines the original color for something new.



CDBDC8



FFE8F8



BDCDCA



665C63



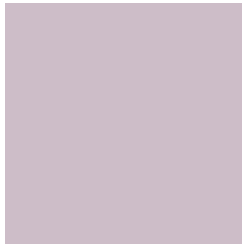
A60072



26001A

Previews

White Background



This preview shows how the Hex color CDBDC8 looks on a white background.

Color Contrast Check

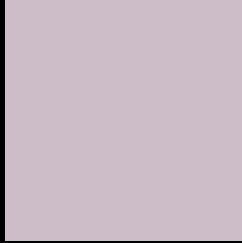
Large Text (above 18pt) WCAG AA × Fail

Any Text WCAG AA × Fail

Large Text (above 18pt) WCAG AAA × Fail

Any Text WCAG AAA × Fail

Black Background



This preview shows how the Hex color CDBDC8 looks on a black background.

Color Contrast Check

Large Text (above 18pt) WCAG AA ✓ Pass

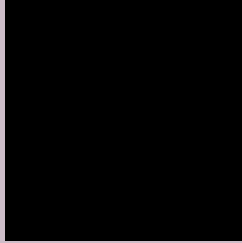
Any Text WCAG AA ✓ Pass

Large Text (above 18pt) WCAG AAA ✓ Pass

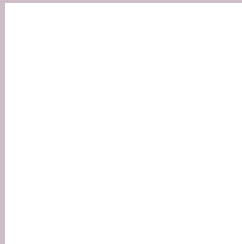
Any Text WCAG AAA ✓ Pass

If you want to check with other color combinations, try the [Color Contrast Checker](#).

Hex CDBDC8 Background



This preview shows how black text looks on a background with the Hex color CDBDC8.

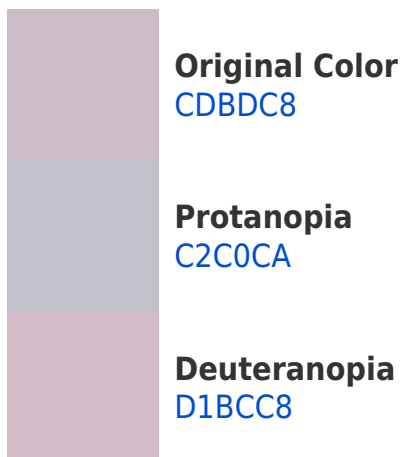


This preview shows how white text looks on a background with the Hex color CDBDC8.

Color Blindness Simulation

Color vision deficiency is a very complex topic, and I could not describe the different causes any better than Wikipedia does, so if you want to learn more, you should check out their [article about color blindness](#).

Dichromacy



Trichromacy



Original Color
CDBDC8

Protanomaly
C6BFC9

Deuteranomaly
D0BCC8

Tritanomaly
CDBCCA

Monochromacy



Original Color
CDBDC8

Achromatopsia
C3C3C3

Achromatomaly
C7C1C5

CSS Examples

Text

The CSS property to change the color of the text to Hex CDBDC8 is called "color". The color property can be set on classes, ids or directly on the HTML element.

This example shows how text in the color #CDBDC8 looks like.

```
.text, #text, p{  
    color:#CDBDC8  
}
```

If you want to add a text shadow in that color use the text-shadow property, you can generate a text shadow directly with our [CSS Text Shadow Generator](#).

Here you see how black text with a 4 pixel #CDBDC8 colored shadow looks like.

```
.shadow{ text-shadow: 4px 4px 2px #CDBDC8  
}
```

Border

The CSS property to change the border of an element to Hex CDBDC8 is called "border". The border property can be set on classes, ids or directly on the HTML element.

This example shows the color as border, it can be applied via the CSS property "border" or "border-color".

```
.border, #border, table{ border:4px solid  
#CDBDC8 }
```

If only the border color should be changed use the property `border-color`.

```
.border{ border-color:#CDBDC8 }
```

If you want to add a box shadow in that color use:

Here you see how a box with a 4 pixel #CDBDC8 colored shadow looks like.

```
.boxshadow{ -moz-box-shadow:4px 4px 4px  
4px #CDBDC8; -webkit-box-shadow:4px 4px  
4px 4px #CDBDC8; box-shadow:4px 4px 4px  
4px #CDBDC8 }
```

Background

The CSS property to change the background color of an element to Hex CDBDC8 is called "background". The background property can be set on classes, ids or directly on the HTML element.

```
.background, #background, body{  
background:#CDBDC8 }
```

If only the background color should be changed can be used:

```
.background{ background-color:#CDBDC8 }
```

This example shows the color as background, it is applied via the CSS property "background".

To optimize and compress your CSS code, you can use our [online CSS compressor and optimizer](#) based on csstidy. If you want to create a linear or radial gradient as background or border, check our [CSS Gradient Generator](#).

Hey! You found this booklet interesting? Support Converting Colors with the new Membership Option!

The pro membership hides all ads, plus gives you double the colors in the color bucket, and more awesome pro features!

[Learn more, Memberships starting at \\$2.50/m!](#)

**Follow me
on Twitter!**

@ConvertingColor