

Converting Colors

Hex(CDBFCB)

Have a look what the booklet for
Hex(CDBFCB) contains.

Hex(CDBFCB)	3
<i>Conversions</i>	4
<i>Details</i>	6
<i>Harmonies</i>	11
<i>Previews</i>	23
<i>Color Blindness Simulation</i>	26
<i>CSS Examples</i>	29

Color

Hex(CDBFCB)

Conversions

Conversions Part 1

Format	Color
Hex	CDBFCB
RGB	205, 191, 203
RGB Percent	80%, 75%, 80%
CMY	0.1961, 0.2510, 0.2039
CMYK	0.00, 0.07, 0.01, 0.20
HSL	309°, 12%, 78%
HSV	309°, 7%, 80%
XYZ	54.5871, 54.5525, 64.1526
YIQ	196.5540, 4.4920, 6.7000

Conversions

Conversions Part 2

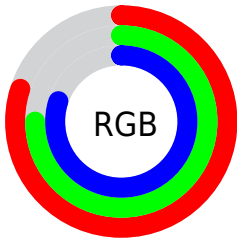
Format	Color
R _Y B	205, 191, 203
Decimal	13483979
CIE Lab	78.78, 7.06, -4.25
CIE LCh	79, 8.244, 328.978
Yxy	54.5525, 0.3150, 0.3148
Android (android.graphics.Color)	4291674059 (0xFFCDBFCB)
YUV	196.5540, 3.1779, 7.4071
Hunter-Lab	73.8597, 2.6687, 0.2041

Details

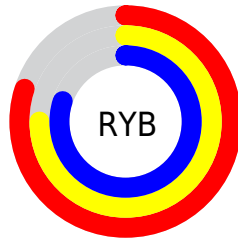
The Hex color **CDBFCB** is a light color, and the websafe version is hex **CCCCCC**. A complement of this color would be **BFDCD1**, and the grayscale version is **C5C5C5**.

A 20% lighter version of the original color is **FFF7FF**, and **978A95** is the 20% darker color. If you saturate the color by 10%, you get **CDABC8**, and if you desaturate by 10%, it is **CDD4CE**.

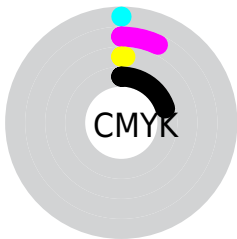
Distribution



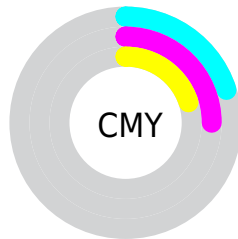
- Red (80%)
- Green (75%)
- Blue (80%)



- Red (80%)
- Yellow (75%)
- Blue (80%)



- Cyan (0%)
- Magenta (7%)
- Yellow (1%)
- Black (20%)



- Cyan (20%)
- Magenta (25%)
- Yellow (20%)

Brightness & Saturation Gradients

These gradients show how the Hex color CDBFCB changes by changing the brightness by 10 percent. The first figure shows a shift by +10% for each color and the second figure -10%.

Similar to the brightness gradients but the following saturation gradients show a change of the Hex color CDBFCB by changing the saturation by 10% instead.



CDBFCB



CDBFCB

FFFFFF



B2A4B0



FFF7FF



978A95



7D707B



645862



4C404B



352A34



20161F



020005



000000

 CDBFCB

 CDBFCB

 CDABC8

 CDD4CE

 CD96C5

 CDE8D1

 CD82C2

 CDFDD4

 CD6DBF

 CDFFD7

 CD59BC

 CDFFDA

 CD44B9

 CDFFDD

 CD30B6

 CDFFE0

 CD1BB4

 CDFFE2

 CD07B1

 CDFFE5

Harmonies

Analogous

The Analogous color harmony consists of three colors that are next to each other on the color wheel.



C4C1D0



CDBFCB



D3BEC4

Triad

The Triadic color harmony groups three colors that are evenly spaced from another and form a triangle on the color wheel.



CDBFCB



CAC2B4



B0C7CA

Complementary

The Complementary color scheme is a pair of colors which are on the opposite of each other on the color wheel.



CDBFCB



BFCDC1

Split Complementary

Split-complementary colors differ from the complementary color scheme. The scheme consists of three colors, the original color and two neighbors of the complement color.



B2C8C2



CDBFCB



C1C5B6

Square

The Square scheme is like the rectangle color scheme, but the four colors are evenly spaced on the color wheel.



CDBFCB



D1C0B6



B9C7BB



B3C6D0

Rectangle

The Rectangle color scheme consists of four colors that form a rectangle on the color wheel.



CDBFCB



D4BEBE



B9C7BB



B0C8C8

Sweetspot

The Sweet Spot groups the original color and five complimentary colors.



CDBFCB



FFFAFE



C1BFCD



807D7F



000000



808080

Same Dimension

The Same Dimension uses a secret algorithm to generate beautiful new colors.



CDBFCB



FFEBFC



CDBFC4



665C65



A6008E



260021

Inverse Universe

The Inverse Universe completely reimagines the original color for something new.



CDBFCB



FFEBFC



BFCDC8



665C65



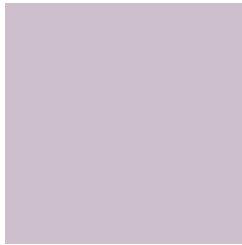
A6008E



260021

Previews

White Background



This preview shows how the Hex color CDBFCB looks on a white background.

Color Contrast Check

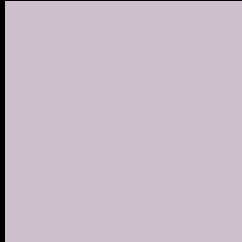
Large Text (above 18pt) WCAG AA × Fail

Any Text WCAG AA × Fail

Large Text (above 18pt) WCAG AAA × Fail

Any Text WCAG AAA × Fail

Black Background



This preview shows how the Hex color CDBFCB looks on a black background.

Color Contrast Check

Large Text (above 18pt) WCAG AA ✓ Pass

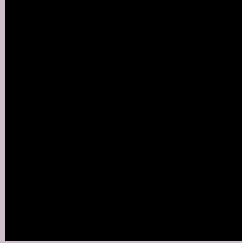
Any Text WCAG AA ✓ Pass

Large Text (above 18pt) WCAG AAA ✓ Pass

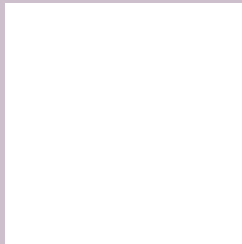
Any Text WCAG AAA ✓ Pass

If you want to check with other color combinations, try the [Color Contrast Checker](#).

Hex CDBFCB Background



This preview shows how black text looks on a background with the Hex color CDBFCB.

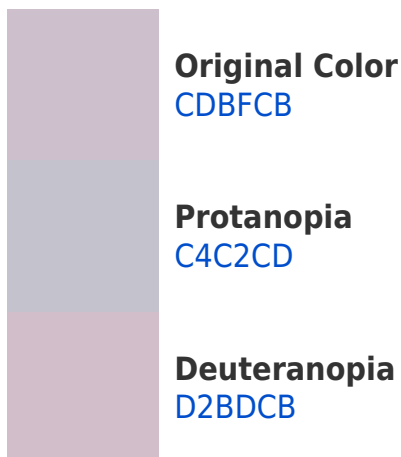


This preview shows how white text looks on a background with the Hex color CDBFCB.

Color Blindness Simulation

Color vision deficiency is a very complex topic, and I could not describe the different causes any better than Wikipedia does, so if you want to learn more, you should check out their [article about color blindness](#).

Dichromacy



Trichromacy



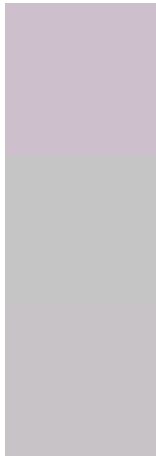
Original Color
CDBFCB

Protanomaly
C7C1CC

Deuteranomaly
D0BECB

Tritanomaly
CDBFCD

Monochromacy



Original Color
CDBFCB

Achromatopsia
C5C5C5

Achromatomaly
C8C3C7

CSS Examples

Text

The CSS property to change the color of the text to Hex CDBFCB is called "color". The color property can be set on classes, ids or directly on the HTML element.

This example shows how text in the color #CDBFCB looks like.

```
.text, #text, p{  
    color:#CDBFCB  
}
```

If you want to add a text shadow in that color use the text-shadow property, you can generate a text shadow directly with our [CSS Text Shadow Generator](#).

Here you see how black text with a 4 pixel #CDBFCB colored shadow looks like.

```
.shadow{ text-shadow: 4px 4px 2px #CDBFCB
}
```

Border

The CSS property to change the border of an element to Hex CDBFCB is called "border". The border property can be set on classes, ids or directly on the HTML element.

This example shows the color as border, it can be applied via the CSS property "border" or "border-color".

```
.border, #border, table{ border:4px solid
#CDBFCB }
```

If only the border color should be changed use the property `border-color`.

```
.border{ border-color:#CDBFCB }
```

If you want to add a box shadow in that color use:

Here you see how a box with a 4 pixel #CDBFCB colored shadow looks like.

```
.boxshadow{ -moz-box-shadow:4px 4px 4px  
4px #CDBFCB; -webkit-box-shadow:4px 4px  
4px 4px #CDBFCB; box-shadow:4px 4px 4px  
4px #CDBFCB }
```

Background

The CSS property to change the background color of an element to Hex CDBFCB is called "background". The background property can be set on classes, ids or directly on the HTML element.

```
.background, #background, body{  
background:#CDBFCB }
```

If only the background color should be changed can be used:

```
.background{ background-color:#CDBFCB }
```

This example shows the color as background, it is applied via the CSS property "background".

To optimize and compress your CSS code, you can use our [online CSS compressor and optimizer](#) based on csstidy. If you want to create a linear or radial gradient as background or border, check our [CSS Gradient Generator](#).

Hey! You found this booklet interesting? Support Converting Colors with the new Membership Option!

The pro membership hides all ads, plus gives you double the colors in the color bucket, and more awesome pro features!

[Learn more, Memberships starting at \\$2.50/m!](#)

**Follow me
on Twitter!**

@ConvertingColor