

# Converting Colors

Hex(CE3975)

Have a look what the booklet for  
Hex(CE3975) contains.

<b>Hex(CE3975)</b> .....	3
<b><i>Conversions</i></b> .....	4
<b><i>Details</i></b> .....	6
<b><i>Harmonies</i></b> .....	11
<b><i>Previews</i></b> .....	23
<b><i>Color Blindness Simulation</i></b> .....	26
<b><i>CSS Examples</i></b> .....	29

# Color

**Hex(CE3975)**

# Conversions

## Conversions Part 1

<b>Format</b>	<b>Color</b>
Hex	CE3975
RGB	206, 57, 117
RGB Percent	81%, 22%, 46%
CMY	0.1922, 0.7765, 0.5412
CMYK	0.00, 0.72, 0.43, 0.19
HSL	336°, 60%, 52%
HSV	336°, 72%, 81%
XYZ	30.1276, 17.3324, 18.5872
YIQ	108.3910, 69.5440, 50.2480

# Conversions

## Conversions Part 2

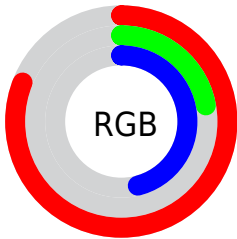
<b>Format</b>	<b>Color</b>
<b>R<sub>YB</sub></b>	206, 57, 117
Decimal	13515125
CIE <sub>Lab</sub>	48.68, 62.14, 0.56
CIE <sub>LCh</sub>	49, 62.140, 0.520
Yxy	17.3324, 0.4562, 0.2624
Android (android.graphics.Color)	4291705205 (0xFFCE3975)
YUV	108.3910, 4.2442, 85.6031
Hunter-Lab	41.6322, 56.3171, 2.6718

# Details

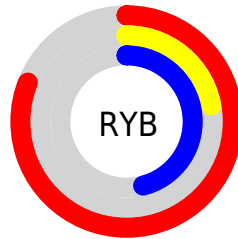
The Hex color **CE3975** is a dark color, and the websafe version is hex **CC3366**. The color can be described as dark muted rose. A complement of this color would be **39CE92**, and the grayscale version is **6C6C6C**.

A 20% lighter version of the original color is **FF73A9**, and **920045** is the 20% darker color. If you saturate the color by 10%, you get **CE2469**, and if you desaturate by 10%, it is **CE4E81**.

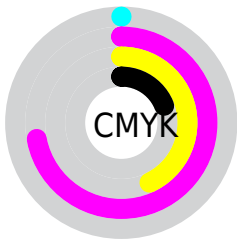
# Distribution



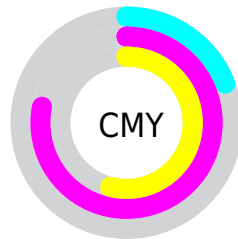
- Red (81%)
- Green (22%)
- Blue (46%)



- Red (81%)
- Yellow (22%)
- Blue (46%)



- Cyan (0%)
- Magenta (72%)
- Yellow (43%)
- Black (19%)



- Cyan (19%)
- Magenta (78%)
- Yellow (54%)

# Brightness & Saturation Gradients

These gradients show how the Hex color CE3975 changes by changing the brightness by 10 percent. The first figure shows a shift by +10% for each color and the second figure -10%.

Similar to the brightness gradients but the following saturation gradients show a change of the Hex color CE3975 by changing the saturation by 10% instead.



 CE3975

 CE3975

FFFFFF

 B0135C

 FF73A9

 920045

 FF90C4

 75002F

 FFACE0

 58001B

 FFC9FD

 3E0003

 FFE7FF

 1A0001

 000000

 CE3975

 CE3975

 CE2469

 CE4E81

 CE105C

 CE628E

 CE0053

 CE779A

 CE8BA6

 CEA0B3

 CEB5BF

 CEC9CB

 CEDED7

 CEF2E4

# Harmonies

## Analogous

The Analogous color harmony consists of three colors that are next to each other on the color wheel.



B24BA8



CE3975



CC4442

# Triad

The Triadic color harmony groups three colors that are evenly spaced from another and form a triangle on the color wheel.



CE3975



568000



0086CF

# Complementary

The Complementary color scheme is a pair of colors which are on the opposite of each other on the color wheel.



CE3975



39CE92

# Split Complementary

Split-complementary colors differ from the complementary color scheme. The scheme consists of three colors, the original color and two neighbors of the complement color.



008BA8



CE3975



00883C

# Square

The Square scheme is like the rectangle color scheme, but the four colors are evenly spaced on the color wheel.



CE3975



8A7200



008B73



007ADE

# Rectangle

The Rectangle color scheme consists of four colors that form a rectangle on the color wheel.



CE3975



BD5421



008B73



0088C4



# Sweetspot

The Sweet Spot groups the original color and five complimentary colors.



CE3975



FFC7DD



9039CE



805E6C



000000



808080



# Same Dimension

The Same Dimension uses a secret algorithm to generate beautiful new colors.



CE3975



FF217A



CE4539



665C60



A60043



26000F



# Inverse Universe

The Inverse Universe completely reimagines the original color for something new.



CE3975



FF217A



39C2CE



665C60



A60043



26000F



# Previews

## White Background



This preview shows how the Hex color CE3975 looks on a white background.

## Color Contrast Check

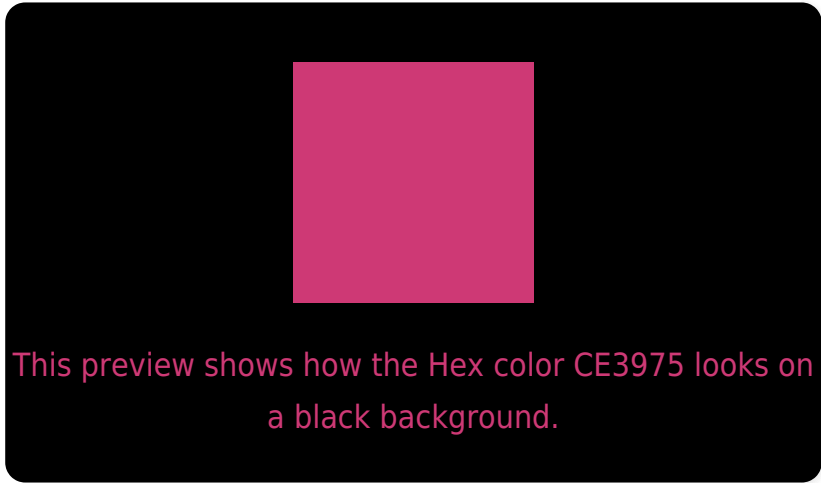
Large Text (above 18pt) WCAG AA ✓ Pass

Any Text WCAG AA ✓ Pass

Large Text (above 18pt) WCAG AAA ✓ Pass

Any Text WCAG AAA × Fail

# Black Background



## Color Contrast Check

Large Text (above 18pt) WCAG AA ✓ Pass

Any Text WCAG AA × Fail

Large Text (above 18pt) WCAG AAA × Fail

Any Text WCAG AAA × Fail

If you want to check with other color combinations, try the [Color Contrast Checker](#).



## Hex CE3975 Background



This preview shows how black text looks on a background with the Hex color CE3975.



This preview shows how white text looks on a background with the Hex color CE3975.

# Color Blindness Simulation

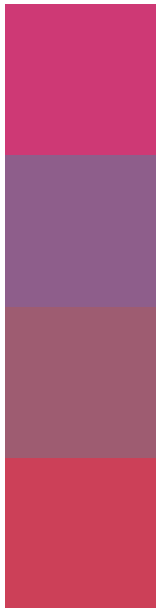
Color vision deficiency is a very complex topic, and I could not describe the different causes any better than Wikipedia does, so if you want to learn more, you should check out their [article about color blindness](#).

## Dichromacy





# Trichromacy



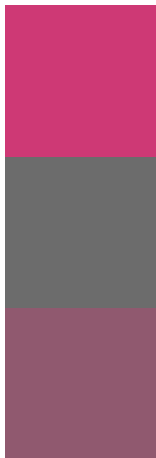
**Original Color**  
CE3975

**Protanomaly**  
8E5E8B

**Deuteranomaly**  
9E5C71

**Tritanomaly**  
CC4058

# Monochromacy



**Original Color**  
CE3975

**Achromatopsia**  
6C6C6C

**Achromatomaly**  
90596F

# CSS Examples

## Text

The CSS property to change the color of the text to Hex CE3975 is called "color". The color property can be set on classes, ids or directly on the HTML element.

This example shows how text in the color #CE3975 looks like.

```
.text, #text, p{  
    color:#CE3975  
}
```

If you want to add a text shadow in that color use the text-shadow property, you can generate a text shadow directly with our [CSS Text Shadow Generator](#).

Here you see how black text with a 4 pixel #CE3975 colored shadow looks like.

```
.shadow{ text-shadow: 4px 4px 2px #CE3975
}
```

## Border

The CSS property to change the border of an element to Hex CE3975 is called "border". The border property can be set on classes, ids or directly on the HTML element.

This example shows the color as border, it can be applied via the CSS property "border" or "border-color".

```
.border, #border, table{ border:4px solid
#CE3975 }
```

If only the border color should be changed use the property `border-color`.

```
.border{ border-color:#CE3975 }
```

If you want to add a box shadow in that color use:

Here you see how a box with a 4 pixel #CE3975 colored shadow looks like.

```
.boxshadow{ -moz-box-shadow:4px 4px 4px  
4px #CE3975; -webkit-box-shadow:4px 4px  
4px 4px #CE3975; box-shadow:4px 4px 4px  
4px #CE3975 }
```

# Background

The CSS property to change the background color of an element to Hex CE3975 is called "background". The background property can be set on classes, ids or directly on the HTML element.

```
.background, #background, body{  
background:#CE3975 }
```

If only the background color should be changed can be used:

```
.background{ background-color:#CE3975 }
```

This example shows the color as background, it is applied via the CSS property "background".

To optimize and compress your CSS code, you can use our [online CSS compressor and optimizer](#) based on csstidy. If you want to create a linear or radial gradient as background or border, check our [CSS Gradient Generator](#).



Hey! You found this booklet interesting? Support Converting Colors with the new Membership Option!

The pro membership hides all ads, plus gives you double the colors in the color bucket, and more awesome pro features!

**[Learn more, Memberships starting at \\$2.50/m!](#)**

**Follow me  
on Twitter!**

@ConvertingColor