

# Converting Colors

Hex(CE3D75)

Have a look what the booklet for  
Hex(CE3D75) contains.

<b>Hex(CE3D75)</b> .....	3
<i><b>Conversions</b></i> .....	4
<i><b>Details</b></i> .....	6
<i><b>Harmonies</b></i> .....	11
<i><b>Previews</b></i> .....	23
<i><b>Color Blindness Simulation</b></i> .....	26
<i><b>CSS Examples</b></i> .....	29

# Color

Hex(CE3D75)

# Conversions

## Conversions Part 1

<b>Format</b>	<b>Color</b>
Hex	CE3D75
RGB	206, 61, 117
RGB Percent	81%, 24%, 46%
CMY	0.1922, 0.7608, 0.5412
CMYK	0.00, 0.70, 0.43, 0.19
HSL	337°, 60%, 52%
HSV	337°, 70%, 81%
XYZ	30.3332, 17.7437, 18.6558
YIQ	110.7390, 68.4440, 48.1560

# Conversions

## Conversions Part 2

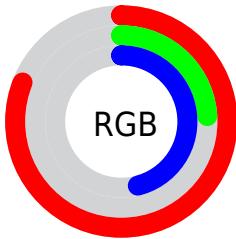
<b>Format</b>	<b>Color</b>
<b>R<sub>YB</sub></b>	206, 61, 117
Decimal	13516149
CIE <sub>Lab</sub>	49.18, 60.72, 1.30
CIE <sub>LCh</sub>	49, 60.738, 1.229
Yxy	17.7437, 0.4545, 0.2659
Android (android.graphics.Color)	4291706229 (0xFFCE3D75)
YUV	110.7390, 3.0867, 83.5439
Hunter-Lab	42.1232, 54.8235, 3.2276

# Details

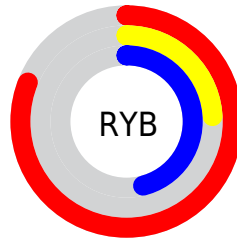
The Hex color **CE3D75** is a dark color, and the websafe version is hex **CC3366**. The color can be described as dark muted rose. A complement of this color would be **3DCE96**, and the grayscale version is **6F6F6F**.

A 20% lighter version of the original color is **FF77A9**, and **920045** is the 20% darker color. If you saturate the color by 10%, you get **CE2868**, and if you desaturate by 10%, it is **CE5282**.

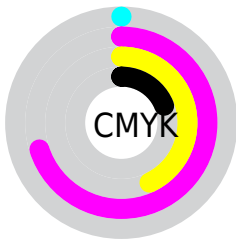
# Distribution



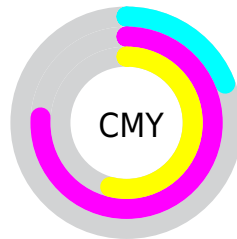
- Red (81%)
- Green (24%)
- Blue (46%)



- Red (81%)
- Yellow (24%)
- Blue (46%)



- Cyan (0%)
- Magenta (70%)
- Yellow (43%)
- Black (19%)



- Cyan (19%)
- Magenta (76%)
- Yellow (54%)

# Brightness & Saturation Gradients

These gradients show how the Hex color CE3D75 changes by changing the brightness by 10 percent. The first figure shows a shift by +10% for each color and the second figure -10%.

Similar to the brightness gradients but the following saturation gradients show a change of the Hex color CE3D75 by changing the saturation by 10% instead.



 CE3D75

 CE3D75

FFFFFF

 B01A5C

 FF77A9

 920045

 FF93C4

 75002F

 FFAFE0

 58001B

 FFCCFD

 3F0003

 FFEAFF

 1B0001

 000000

 CE3D75

 CE3D75

 CE2868

 CE5282

 CE145C

 CE668E

 CE0050

 CE7B9B

 CE8FA8

 CEA4B4

 CEB9C1

 CECDCE

 CEE2DA

 CEF6E7

# Harmonies

## Analogous

The Analogous color harmony consists of three colors that are next to each other on the color wheel.



B44DA7



CE3D75



CB4843

# Triad

The Triadic color harmony groups three colors that are evenly spaced from another and form a triangle on the color wheel.



CE3D75



578107



0087CF

# Complementary

The Complementary color scheme is a pair of colors which are on the opposite of each other on the color wheel.



CE3D75



3DCE96

# Split Complementary

Split-complementary colors differ from the complementary color scheme. The scheme consists of three colors, the original color and two neighbors of the complement color.



008CA9



CE3D75



008940

# Square

The Square scheme is like the rectangle color scheme, but the four colors are evenly spaced on the color wheel.



CE3D75



8B7300



008C76



007BDD

# Rectangle

The Rectangle color scheme consists of four colors that form a rectangle on the color wheel.



CE3D75



BD5723



008C76



0089C5



# Sweetspot

The Sweet Spot groups the original color and five complimentary colors.



CE3D75



FFC9DE



943DCE



80606C



000000



808080



# Same Dimension

The Same Dimension uses a secret algorithm to generate beautiful new colors.



CE3D75



FF297C



CE4C3D



665C60



A60040



26000F



# Inverse Universe

The Inverse Universe completely reimagines the original color for something new.



CE3D75



FF297C



3DBFCE



665C60



A60040



26000F



# Previews

## White Background



This preview shows how the Hex color CE3D75 looks on a white background.

## Color Contrast Check

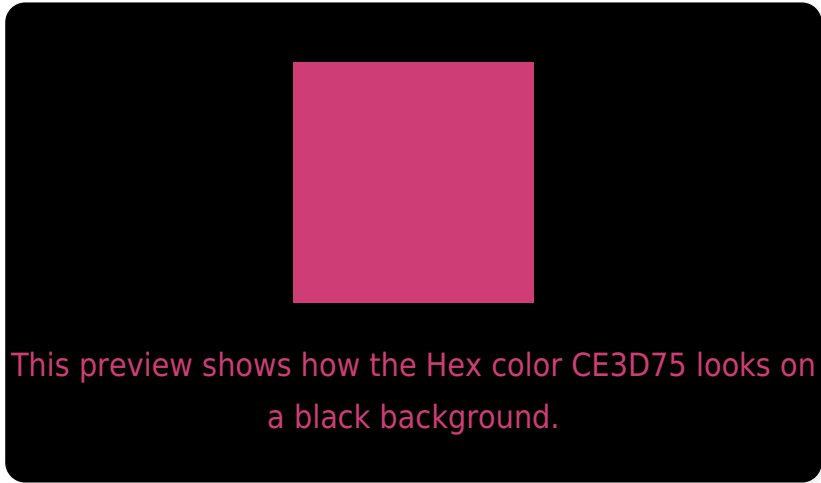
Large Text (above 18pt) WCAG AA ✓ Pass

Any Text WCAG AA ✓ Pass

Large Text (above 18pt) WCAG AAA ✓ Pass

Any Text WCAG AAA × Fail

# Black Background



## Color Contrast Check

Large Text (above 18pt) WCAG AA ✓ Pass

Any Text WCAG AA ✓ Pass

Large Text (above 18pt) WCAG AAA ✓ Pass

Any Text WCAG AAA × Fail

If you want to check with other color combinations, try the [Color Contrast Checker](#).



## Hex CE3D75 Background



This preview shows how black text looks on a background with the Hex color CE3D75.




This preview shows how white text looks on a background with the Hex color CE3D75.

# Color Blindness Simulation

Color vision deficiency is a very complex topic, and I could not describe the different causes any better than Wikipedia does, so if you want to learn more, you should check out their [article about color blindness](#).

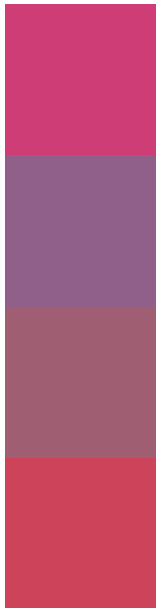
## Dichromacy





**Tritanopia**  
CB474B

# Trichromacy



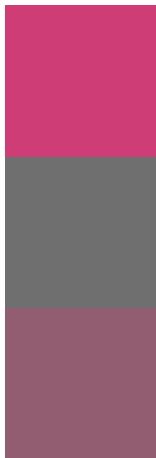
**Original Color**  
CE3D75

**Protanomaly**  
90608A

**Deuteranomaly**  
9F5E71

**Tritanomaly**  
CC435A

# Monochromacy



**Original Color**  
CE3D75

**Achromatopsia**  
6F6F6F

**Achromatomaly**  
925D71

# CSS Examples

## Text

The CSS property to change the color of the text to Hex CE3D75 is called "color". The color property can be set on classes, ids or directly on the HTML element.

This example shows how text in the color #CE3D75 looks like.

```
.text, #text, p{  
    color:#CE3D75  
}
```

If you want to add a text shadow in that color use the text-shadow property, you can generate a text shadow directly with our [CSS Text Shadow Generator](#).

Here you see how black text with a 4 pixel #CE3D75 colored shadow looks like.

```
.shadow{ text-shadow: 4px 4px 2px #CE3D75  
}
```

## Border

The CSS property to change the border of an element to Hex CE3D75 is called "border". The border property can be set on classes, ids or directly on the HTML element.

This example shows the color as border, it can be applied via the CSS property "border" or "border-color".

```
.border, #border, table{ border:4px solid  
#CE3D75 }
```

If only the border color should be changed use the property `border-color`.

```
.border{ border-color:#CE3D75 }
```

If you want to add a box shadow in that color use:

Here you see how a box with a 4 pixel #CE3D75 colored shadow looks like.

```
.boxshadow{ -moz-box-shadow:4px 4px 4px  
4px #CE3D75; -webkit-box-shadow:4px 4px  
4px 4px #CE3D75; box-shadow:4px 4px 4px  
4px #CE3D75 }
```

# Background

The CSS property to change the background color of an element to Hex CE3D75 is called "background". The background property can be set on classes, ids or directly on the HTML element.

```
.background, #background, body{  
background:#CE3D75 }
```

If only the background color should be changed can be used:

```
.background{ background-color:#CE3D75 }
```

This example shows the color as background, it is applied via the CSS property "background".

To optimize and compress your CSS code, you can use our [online CSS compressor and optimizer](#) based on csstidy. If you want to create a linear or radial gradient as background or border, check our [CSS Gradient Generator](#).



Hey! You found this booklet interesting? Support Converting Colors with the new Membership Option!

The pro membership hides all ads, plus gives you double the colors in the color bucket, and more awesome pro features!

**[Learn more, Memberships starting at \\$2.50/m!](#)**

**Follow me  
on Twitter!**

@ConvertingColor