

# Converting Colors

Hex(CE5274)

Have a look what the booklet for  
Hex(CE5274) contains.

<b>Hex(CE5274)</b> .....	3
<b><i>Conversions</i></b> .....	4
<b><i>Details</i></b> .....	6
<b><i>Harmonies</i></b> .....	11
<b><i>Previews</i></b> .....	23
<b><i>Color Blindness Simulation</i></b> .....	26
<b><i>CSS Examples</i></b> .....	29

# Color

Hex(CE5274)

# Conversions

## Conversions Part 1

<b>Format</b>	<b>Color</b>
Hex	CE5274
RGB	206, 82, 116
RGB Percent	81%, 32%, 45%
CMY	0.1922, 0.6784, 0.5451
CMYK	0.00, 0.60, 0.44, 0.19
HSL	344°, 56%, 56%
HSV	344°, 60%, 81%
XYZ	31.6233, 20.4174, 18.7972
YIQ	122.9520, 62.9900, 36.8620

# Conversions

## Conversions Part 2

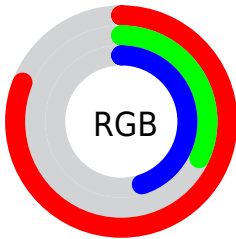
<b>Format</b>	<b>Color</b>
<b>R<sub>YB</sub></b>	206, 82, 116
Decimal	13521524
CIE <sub>Lab</sub>	52.31, 52.04, 6.41
CIE <sub>LCh</sub>	52, 52.436, 7.017
Yxy	20.4174, 0.4464, 0.2882
Android (android.graphics.Color)	4291711604 (0xFFCE5274)
YUV	122.9520, -3.4273, 72.8331
Hunter-Lab	45.1856, 45.8491, 6.9652

# Details

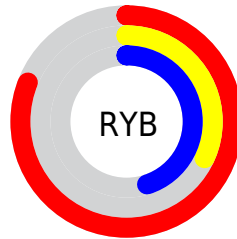
The Hex color **CE5274** is a dark color, and the websafe version is hex **CC3366**. The color can be described as middle muted rose. A complement of this color would be **52CEAC**, and the grayscale version is **7B7B7B**.

A 20% lighter version of the original color is **FF89A8**, and **931644** is the 20% darker color. If you saturate the color by 10%, you get **CE3D65**, and if you desaturate by 10%, it is **CE6783**.

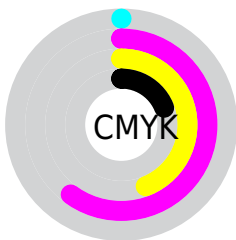
# Distribution



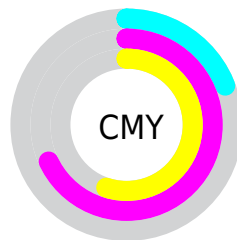
- Red (81%)
- Green (32%)
- Blue (45%)



- Red (81%)
- Yellow (32%)
- Blue (45%)



- Cyan (0%)
- Magenta (60%)
- Yellow (44%)
- Black (19%)



- Cyan (19%)
- Magenta (68%)
- Yellow (55%)

# Brightness & Saturation Gradients

These gradients show how the Hex color CE5274 changes by changing the brightness by 10 percent. The first figure shows a shift by +10% for each color and the second figure -10%.

Similar to the brightness gradients but the following saturation gradients show a change of the Hex color CE5274 by changing the saturation by 10% instead.



 CE5274

 CE5274

FFFFFF

 B0365C

 FF89A8

 931644

 FFA4C3

 76002E

 FFC1DF

 5A001A

 FFDDFB

 400001

 FFFBFF

 210001

 000000

 CE5274

 CE5274

 CE3D65

 CE6783

 CE2956

 CE7B92

 CE1447

 CE90A1

 CE0038

 CEA4B0

 CEB9BF

 CECECE

 CEE2DD

 CEF7EC

 CEFFFB

# Harmonies

## Analogous

The Analogous color harmony consists of three colors that are next to each other on the color wheel.



BB5AA1



CE5274



C85C49

# Triad

The Triadic color harmony groups three colors that are evenly spaced from another and form a triangle on the color wheel.



CE5274



5B892F



008BCF

# Complementary

The Complementary color scheme is a pair of colors which are on the opposite of each other on the color wheel.



CE5274



52CEAC

# Split Complementary

Split-complementary colors differ from the complementary color scheme. The scheme consists of three colors, the original color and two neighbors of the complement color.



0091B2



CE5274



009058

# Square

The Square scheme is like the rectangle color scheme, but the four colors are evenly spaced on the color wheel.



CE5274



8A7E18



009286



2B7ED6

# Rectangle

The Rectangle color scheme consists of four colors that form a rectangle on the color wheel.



CE5274



BA6831



009286



008EC8



# Sweetspot

The Sweet Spot groups the original color and five complimentary colors.



CE5274



FFD1DE



AB52CE



80636B



000000



808080



# Same Dimension

The Same Dimension uses a secret algorithm to generate beautiful new colors.



CE5274



FF477A



CE6D52



665C5F



A6002D



26000A



# Inverse Universe

The Inverse Universe completely reimagines the original color for something new.



CE5274



FF477A



52B3CE



665C5F



A6002D



26000A



# Previews

## White Background



This preview shows how the Hex color CE5274 looks on a white background.

## Color Contrast Check

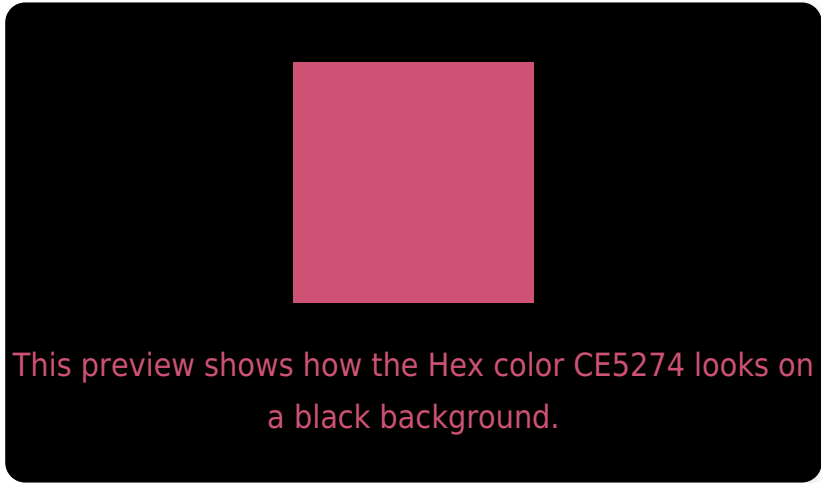
Large Text (above 18pt) WCAG AA ✓ Pass

Any Text WCAG AA ✗ Fail

Large Text (above 18pt) WCAG AAA ✗ Fail

Any Text WCAG AAA ✗ Fail

# Black Background



## Color Contrast Check

Large Text (above 18pt) WCAG AA ✓ Pass

Any Text WCAG AA ✓ Pass

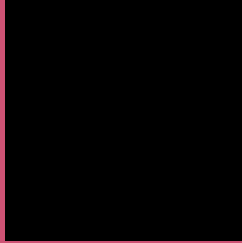
Large Text (above 18pt) WCAG AAA ✓ Pass

Any Text WCAG AAA × Fail

If you want to check with other color combinations, try the [Color Contrast Checker](#).



## Hex CE5274 Background



This preview shows how black text looks on a background with the Hex color CE5274.

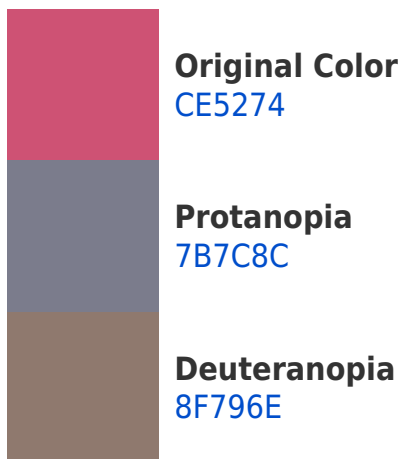


This preview shows how white text looks on a background with the Hex color CE5274.

# Color Blindness Simulation

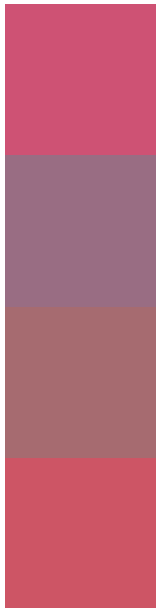
Color vision deficiency is a very complex topic, and I could not describe the different causes any better than Wikipedia does, so if you want to learn more, you should check out their [article about color blindness](#).

## Dichromacy





# Trichromacy



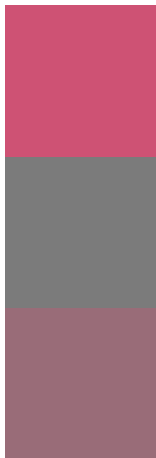
**Original Color**  
CE5274

**Protanomaly**  
996D83

**Deuteranomaly**  
A66B70

**Tritanomaly**  
CD5565

# Monochromacy



**Original Color**  
CE5274

**Achromatopsia**  
7B7B7B

**Achromatomaly**  
996C78

# CSS Examples

## Text

The CSS property to change the color of the text to Hex CE5274 is called "color". The color property can be set on classes, ids or directly on the HTML element.

This example shows how text in the color #CE5274 looks like.

```
.text, #text, p{  
    color:#CE5274  
}
```

If you want to add a text shadow in that color use the text-shadow property, you can generate a text shadow directly with our [CSS Text Shadow Generator](#).

Here you see how black text with a 4 pixel #CE5274 colored shadow looks like.

```
.shadow{ text-shadow: 4px 4px 2px #CE5274
}
```

## Border

The CSS property to change the border of an element to Hex CE5274 is called "border". The border property can be set on classes, ids or directly on the HTML element.

This example shows the color as border, it can be applied via the CSS property "border" or "border-color".

```
.border, #border, table{ border:4px solid
#CE5274 }
```

If only the border color should be changed use the property `border-color`.

```
.border{ border-color:#CE5274 }
```

If you want to add a box shadow in that color use:

Here you see how a box with a 4 pixel #CE5274 colored shadow looks like.

```
.boxshadow{ -moz-box-shadow:4px 4px 4px  
4px #CE5274; -webkit-box-shadow:4px 4px  
4px 4px #CE5274; box-shadow:4px 4px 4px  
4px #CE5274 }
```

# Background

The CSS property to change the background color of an element to Hex CE5274 is called "background". The background property can be set on classes, ids or directly on the HTML element.

```
.background, #background, body{  
background:#CE5274 }
```

If only the background color should be changed can be used:

```
.background{ background-color:#CE5274 }
```

This example shows the color as background, it is applied via the CSS property "background".

To optimize and compress your CSS code, you can use our [online CSS compressor and optimizer](#) based on csstidy. If you want to create a linear or radial gradient as background or border, check our [CSS Gradient Generator](#).



Hey! You found this booklet interesting? Support Converting Colors with the new Membership Option!

The pro membership hides all ads, plus gives you double the colors in the color bucket, and more awesome pro features!

**[Learn more, Memberships starting at \\$2.50/m!](#)**

**Follow me  
on Twitter!**

@ConvertingColor