

Converting Colors

Hex(CE847E)

Have a look what the booklet for
Hex(CE847E) contains.

Hex(CE847E)	3
<i>Conversions</i>	4
<i>Details</i>	6
<i>Harmonies</i>	11
<i>Previews</i>	23
<i>Color Blindness Simulation</i>	26
<i>CSS Examples</i>	29

Color

Hex(CE847E)

Conversions

Conversions Part 1

Format	Color
Hex	CE847E
RGB	206, 132, 126
RGB Percent	81%, 52%, 49%
CMY	0.1922, 0.4824, 0.5059
CMYK	0.00, 0.36, 0.39, 0.19
HSL	5°, 45%, 65%
HSV	5°, 39%, 81%
XYZ	37.4708, 31.1307, 23.7726
YIQ	153.4420, 46.0300, 13.8220

Conversions

Conversions Part 2

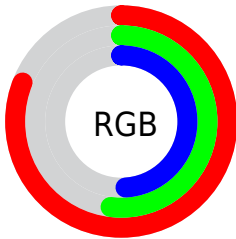
Format	Color
R _Y B	206, 132, 126
Decimal	13534334
CIE Lab	62.62, 27.75, 15.12
CIE LCh	63, 31.605, 28.577
Yxy	31.1307, 0.4056, 0.3370
Android (android.graphics.Color)	4291724414 (0xFFCE847E)
YUV	153.4420, -13.5289, 46.0934
Hunter-Lab	55.7949, 22.2361, 13.7947

Details

The Hex color **CE847E** is a light color, and the websafe version is hex **CC9999**. A complement of this color would be **7EC8CE**, and the grayscale version is **9A9A9A**.

A 20% lighter version of the original color is **FFBAB3**, and **95514D** is the 20% darker color. If you saturate the color by 10%, you get **CE7169**, and if you desaturate by 10%, it is **CE9793**.

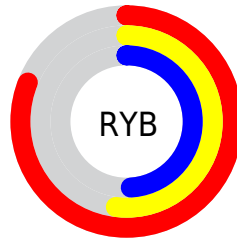
Distribution



Red (81%)

Green (52%)

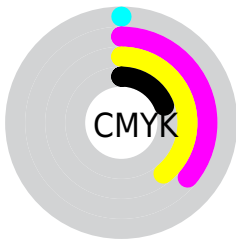
Blue (49%)



Red (81%)

Yellow (52%)

Blue (49%)

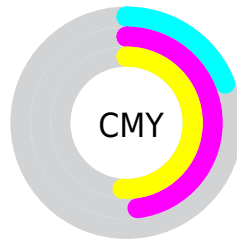


Cyan (0%)

Magenta (36%)

Yellow (39%)

Black (19%)



Cyan (19%)

Magenta (48%)

Yellow (51%)

Brightness & Saturation Gradients

These gradients show how the Hex color CE847E changes by changing the brightness by 10 percent. The first figure shows a shift by +10% for each color and the second figure -10%.

Similar to the brightness gradients but the following saturation gradients show a change of the Hex color CE847E by changing the saturation by 10% instead.

 CE847E

 CE847E

FFFFFF

 B16A65

 FFBA3

 95514D

 FFD6CE

 7A3936

 FFF2EA

 5F2221

 450A0B

 2D0000

 000000

 CE847E

 CE847E

 CE7169

 CE9793

 CE5E55

 CEAAA7

 CE4B40

 CEBDBC

 CE382C

 CED0D0

 CE2517

 CEE3E5

 CE1202

 CEF6FA

 CE0F00

 CEFFFF

Harmonies

Analogous

The Analogous color harmony consists of three colors that are next to each other on the color wheel.



CC829A



CE847E



C28C68

Triad

The Triadic color harmony groups three colors that are evenly spaced from another and form a triangle on the color wheel.



CE847E



6EA479



6E9BCF

Complementary

The Complementary color scheme is a pair of colors which are on the opposite of each other on the color wheel.



CE847E



7EC8CE

Split Complementary

Split-complementary colors differ from the complementary color scheme. The scheme consists of three colors, the original color and two neighbors of the complement color.



43A2C7



CE847E



4BA795

Square

The Square scheme is like the rectangle color scheme, but the four colors are evenly spaced on the color wheel.



CE847E



8F9E65



32A6B1



9991C9

Rectangle

The Rectangle color scheme consists of four colors that form a rectangle on the color wheel.



CE847E



B49261



32A6B1



5F9DCE

Sweetspot

The Sweet Spot groups the original color and five complimentary colors.



CE847E



FFE3E0



CE7EC9



806F6E



000000



808080

Same Dimension

The Same Dimension uses a secret algorithm to generate beautiful new colors.



CE847E



FF9087



CEAB7E



665D5C



A60C00



260300

Inverse Universe

The Inverse Universe completely reimagines the original color for something new.



7EC8CE



87F6FF



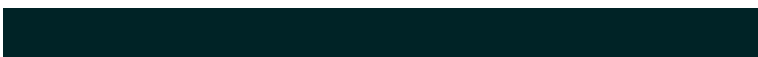
7EA1CE



5C6566



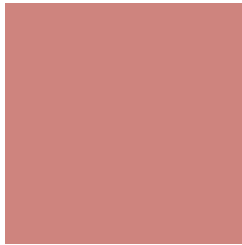
0099A6



002326

Previews

White Background



This preview shows how the Hex color CE847E looks on a white background.

Color Contrast Check

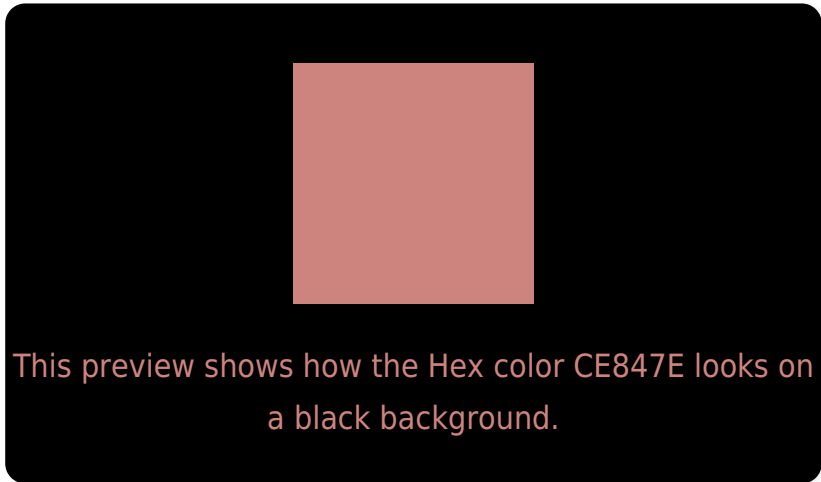
Large Text (above 18pt) WCAG AA × Fail

Any Text WCAG AA × Fail

Large Text (above 18pt) WCAG AAA × Fail

Any Text WCAG AAA × Fail

Black Background



Color Contrast Check

Large Text (above 18pt) WCAG AA ✓ Pass

Any Text WCAG AA ✓ Pass

Large Text (above 18pt) WCAG AAA ✓ Pass

Any Text WCAG AAA ✓ Pass

If you want to check with other color combinations, try the [Color Contrast Checker](#).

Hex CE847E Background



This preview shows how black text looks on a background with the Hex color CE847E.




This preview shows how white text looks on a background with the Hex color CE847E.

Color Blindness Simulation

Color vision deficiency is a very complex topic, and I could not describe the different causes any better than Wikipedia does, so if you want to learn more, you should check out their [article about color blindness](#).

Dichromacy





Tritanopia
CF828C

Trichromacy



Original Color
CE847E

Protanomaly
AF9084

Deuteranomaly
BB8D7C

Tritanomaly
CF8387

Monochromacy



Original Color
CE847E

Achromatopsia
999999

Achromatomaly
AC918F

CSS Examples

Text

The CSS property to change the color of the text to Hex CE847E is called "color". The color property can be set on classes, ids or directly on the HTML element.

This example shows how text in the color #CE847E looks like.

```
.text, #text, p{  
    color:#CE847E  
}
```

If you want to add a text shadow in that color use the text-shadow property, you can generate a text shadow directly with our [CSS Text Shadow Generator](#).

Here you see how black text with a 4 pixel #CE847E colored shadow looks like.

```
.shadow{ text-shadow: 4px 4px 2px #CE847E
}
```

Border

The CSS property to change the border of an element to Hex CE847E is called "border". The border property can be set on classes, ids or directly on the HTML element.

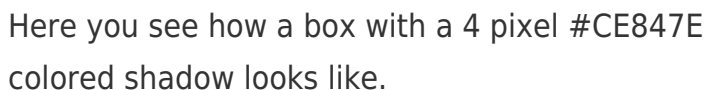
This example shows the color as border, it can be applied via the CSS property "border" or "border-color".

```
.border, #border, table{ border:4px solid
#CE847E }
```

If only the border color should be changed use the property `border-color`.

```
.border{ border-color:#CE847E }
```

If you want to add a box shadow in that color use:

A rectangular box with a 4px red shadow. The box is white with a thin red border. The shadow is a darker red color, extending 4 pixels to the right and 4 pixels down from the bottom-right corner of the box. The text inside the box is black and reads: "Here you see how a box with a 4 pixel #CE847E colored shadow looks like."

Here you see how a box with a 4 pixel #CE847E colored shadow looks like.

```
.boxshadow{ -moz-box-shadow:4px 4px 4px  
4px #CE847E; -webkit-box-shadow:4px 4px  
4px 4px #CE847E; box-shadow:4px 4px 4px  
4px #CE847E }
```

Background

The CSS property to change the background color of an element to Hex CE847E is called "background". The background property can be set on classes, ids or directly on the HTML element.

```
.background, #background, body{  
background:#CE847E }
```

If only the background color should be changed can be used:

```
.background{ background-color:#CE847E }
```

This example shows the color as background, it is applied via the CSS property "background".

To optimize and compress your CSS code, you can use our [online CSS compressor and optimizer](#) based on csstidy. If you want to create a linear or radial gradient as background or border, check our [CSS Gradient Generator](#).

Hey! You found this booklet interesting? Support Converting Colors with the new Membership Option!

The pro membership hides all ads, plus gives you double the colors in the color bucket, and more awesome pro features!

[Learn more, Memberships starting at \\$2.50/m!](#)

**Follow me
on Twitter!**

@ConvertingColor