

Converting Colors

Hex(CE8989)

Have a look what the booklet for
Hex(CE8989) contains.

Hex(CE8989)	3
<i>Conversions</i>	4
<i>Details</i>	6
<i>Harmonies</i>	11
<i>Previews</i>	23
<i>Color Blindness Simulation</i>	26
<i>CSS Examples</i>	29

Color

Hex(CE8989)

Conversions

Conversions Part 1

Format	Color
Hex	CE8989
RGB	206, 137, 137
RGB Percent	81%, 54%, 54%
CMY	0.1922, 0.4627, 0.4627
CMYK	0.00, 0.33, 0.33, 0.19
HSL	0°, 41%, 67%
HSV	0°, 33%, 81%
XYZ	38.9146, 32.8193, 27.9506
YIQ	157.6310, 41.1240, 14.6280

Conversions

Conversions Part 2

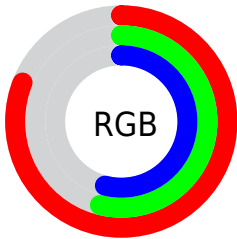
Format	Color
R_{YB}	206, 137, 137
Decimal	13535625
CIE _{Lab}	64.01, 26.38, 10.85
CIE _{LCh}	64, 28.528, 22.349
Yxy	32.8193, 0.3904, 0.3292
Android (android.graphics.Color)	4291725705 (0xFFCE8989)
YUV	157.6310, -10.1711, 42.4196
Hunter-Lab	57.2881, 20.9971, 11.1743

Details

The Hex color **CE8989** is a light color, and the websafe version is hex **CC9999**. A complement of this color would be **89CECE**, and the grayscale version is **9E9E9E**.

A 20% lighter version of the original color is **FFBFBE**, and **965657** is the 20% darker color. If you saturate the color by 10%, you get **CE7474**, and if you desaturate by 10%, it is **CE9E9E**.

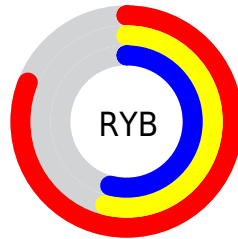
Distribution



Red (81%)

Green (54%)

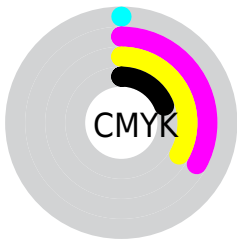
Blue (54%)



Red (81%)

Yellow (54%)

Blue (54%)

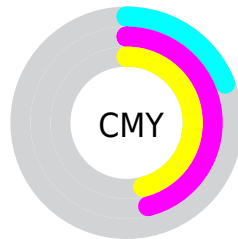


Cyan (0%)

Magenta (33%)

Yellow (33%)

Black (19%)



Cyan (19%)

Magenta (46%)

Yellow (46%)

Brightness & Saturation Gradients

These gradients show how the Hex color CE8989 changes by changing the brightness by 10 percent. The first figure shows a shift by +10% for each color and the second figure -10%.

Similar to the brightness gradients but the following saturation gradients show a change of the Hex color CE8989 by changing the saturation by 10% instead.

 CE8989

 CE8989

FFFFFF

 B26F70

 FFBFBE

 965657

 FFDBDA

 7B3E40

 FFF8F7

 60272A

 461016

 2F0000

 020000

 000000

 CE8989

 CE8989

 CE7474

 CE9E9E

 CE6060

 CEB2B2

 CE4B4B

 CEC7C7

 CE3737

 CEDBDB

 CE2222

 CEF0F0

 CE0D0D

 CEFFFF

 CE0000

Harmonies

Analogous

The Analogous color harmony consists of three colors that are next to each other on the color wheel.



C989A3



CE8989



C68F74

Triad

The Triadic color harmony groups three colors that are evenly spaced from another and form a triangle on the color wheel.



CE8989



7CA67B



70A0CD

Complementary

The Complementary color scheme is a pair of colors which are on the opposite of each other on the color wheel.



CE8989



89CECE

Split Complementary

Split-complementary colors differ from the complementary color scheme. The scheme consists of three colors, the original color and two neighbors of the complement color.



50A6C3



CE8989



5FA993

Square

The Square scheme is like the rectangle color scheme, but the four colors are evenly spaced on the color wheel.



CE8989



999F6C



4AA9AE



9697CA

Rectangle

The Rectangle color scheme consists of four colors that form a rectangle on the color wheel.



CE8989



BA946B



4AA9AE



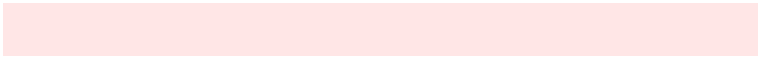
64A2CB

Sweetspot

The Sweet Spot groups the original color and five complimentary colors.



CE8989



FFE6E6



CE89CE



807070



000000



808080

Same Dimension

The Same Dimension uses a secret algorithm to generate beautiful new colors.



CE8989



FF9999



CEAB89



665C5C



A60000



260000

Inverse Universe

The Inverse Universe completely reimagines the original color for something new.



89CECE



99FFFF



89ABCE



5C6666



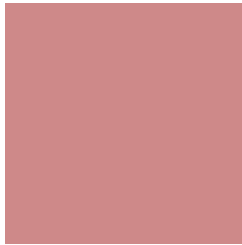
00A6A6



002626

Previews

White Background



This preview shows how the Hex color CE8989 looks on a white background.

Color Contrast Check

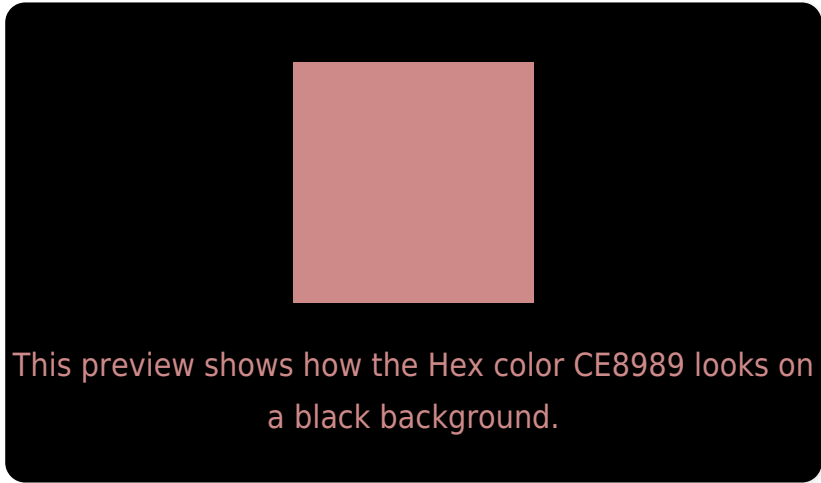
Large Text (above 18pt) WCAG AA × Fail

Any Text WCAG AA × Fail

Large Text (above 18pt) WCAG AAA × Fail

Any Text WCAG AAA × Fail

Black Background



Color Contrast Check

Large Text (above 18pt) WCAG AA ✓ Pass

Any Text WCAG AA ✓ Pass

Large Text (above 18pt) WCAG AAA ✓ Pass

Any Text WCAG AAA ✓ Pass

If you want to check with other color combinations, try the [Color Contrast Checker](#).

Hex CE8989 Background



This preview shows how black text looks on a background with the Hex color CE8989.

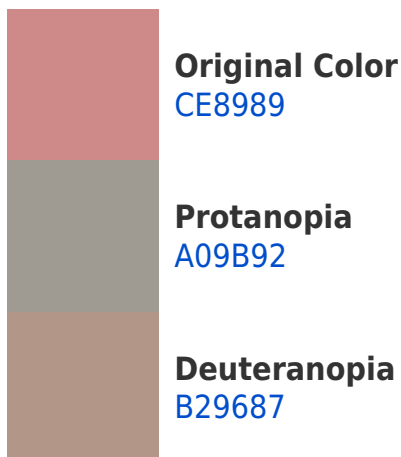


This preview shows how white text looks on a background with the Hex color CE8989.

Color Blindness Simulation

Color vision deficiency is a very complex topic, and I could not describe the different causes any better than Wikipedia does, so if you want to learn more, you should check out their [article about color blindness](#).

Dichromacy





Tritanopia
CF8892

Trichromacy



Original Color
CE8989

Protanomaly
B1948F

Deuteranomaly
BC9188

Tritanomaly
CF888F

Monochromacy



Original Color
CE8989

Achromatopsia
9E9E9E

Achromatomaly
AF9696

CSS Examples

Text

The CSS property to change the color of the text to Hex CE8989 is called "color". The color property can be set on classes, ids or directly on the HTML element.

This example shows how text in the color #CE8989 looks like.

```
.text, #text, p{  
    color:#CE8989  
}
```

If you want to add a text shadow in that color use the text-shadow property, you can generate a text shadow directly with our [CSS Text Shadow Generator](#).

Here you see how black text with a 4 pixel #CE8989 colored shadow looks like.

```
.shadow{ text-shadow: 4px 4px 2px #CE8989
}
```

Border

The CSS property to change the border of an element to Hex CE8989 is called "border". The border property can be set on classes, ids or directly on the HTML element.

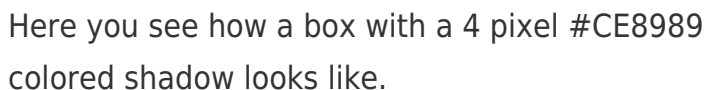
This example shows the color as border, it can be applied via the CSS property "border" or "border-color".

```
.border, #border, table{ border:4px solid
#CE8989 }
```

If only the border color should be changed use the property `border-color`.

```
.border{ border-color:#CE8989 }
```

If you want to add a box shadow in that color use:

A rectangular box with a 4px red shadow. The box is white with a thin red border. The shadow is a darker red color, extending 4 pixels to the right and 4 pixels down from the bottom-right corner of the box.

Here you see how a box with a 4 pixel #CE8989 colored shadow looks like.

```
.boxshadow{ -moz-box-shadow:4px 4px 4px  
4px #CE8989; -webkit-box-shadow:4px 4px  
4px 4px #CE8989; box-shadow:4px 4px 4px  
4px #CE8989 }
```

Background

The CSS property to change the background color of an element to Hex CE8989 is called "background". The background property can be set on classes, ids or directly on the HTML element.

```
.background, #background, body{  
background:#CE8989 }
```

If only the background color should be changed can be used:

```
.background{ background-color:#CE8989 }
```

This example shows the color as background, it is applied via the CSS property "background".

To optimize and compress your CSS code, you can use our [online CSS compressor and optimizer](#) based on csstidy. If you want to create a linear or radial gradient as background or border, check our [CSS Gradient Generator](#).

Hey! You found this booklet interesting? Support Converting Colors with the new Membership Option!

The pro membership hides all ads, plus gives you double the colors in the color bucket, and more awesome pro features!

[Learn more, Memberships starting at \\$2.50/m!](#)

**Follow me
on Twitter!**

@ConvertingColor