

Converting Colors

Hex(CE90A5)

Have a look what the booklet for
Hex(CE90A5) contains.

Hex(CE90A5)	3
<i>Conversions</i>	4
<i>Details</i>	6
<i>Harmonies</i>	11
<i>Previews</i>	23
<i>Color Blindness Simulation</i>	26
<i>CSS Examples</i>	29

Color

Hex(CE90A5)

Conversions

Conversions Part 1

Format	Color
Hex	CE90A5
RGB	206, 144, 165
RGB Percent	81%, 56%, 65%
CMY	0.1922, 0.4353, 0.3529
CMYK	0.00, 0.30, 0.20, 0.19
HSL	340°, 39%, 69%
HSV	340°, 30%, 81%
XYZ	42.2184, 35.7849, 40.2793
YIQ	164.9320, 30.2110, 19.6750

Conversions

Conversions Part 2

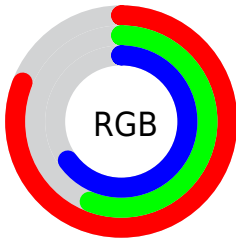
Format	Color
R _Y B	206, 144, 165
Decimal	13537445
CIE Lab	66.36, 26.52, -1.58
CIE LCh	66, 26.564, 356.589
Yxy	35.7849, 0.3569, 0.3025
Android (android.graphics.Color)	4291727525 (0xFFCE90A5)
YUV	164.9320, 0.0335, 36.0166
Hunter-Lab	59.8205, 21.2906, 1.9522

Details

The Hex color **CE90A5** is a light color, and the websafe version is hex **CC9999**. A complement of this color would be **90CEB9**, and the grayscale version is **A5A5A5**.

A 20% lighter version of the original color is **FFC6DC**, and **975D71** is the 20% darker color. If you saturate the color by 10%, you get **CE7B97**, and if you desaturate by 10%, it is **CEA5B3**.

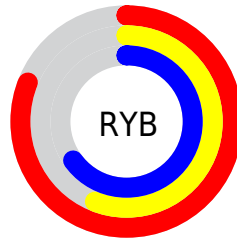
Distribution



Red (81%)

Green (56%)

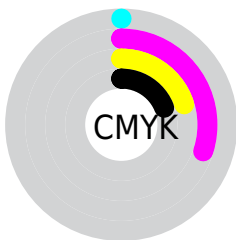
Blue (65%)



Red (81%)

Yellow (56%)

Blue (65%)

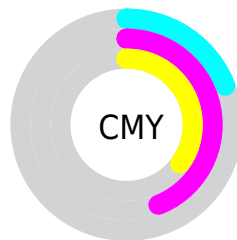


Cyan (0%)

Magenta (30%)

Yellow (20%)

Black (19%)



Cyan (19%)

Magenta (44%)

Yellow (35%)

Brightness & Saturation Gradients

These gradients show how the Hex color CE90A5 changes by changing the brightness by 10 percent. The first figure shows a shift by +10% for each color and the second figure -10%.

Similar to the brightness gradients but the following saturation gradients show a change of the Hex color CE90A5 by changing the saturation by 10% instead.

 CE90A5

 CE90A5

FFFFFF

 B2768B

 FFC6DC

 975D71

 FFE3F8

 7C4559

 622D42

 49162B

 310017

 170000

 000000

 CE90A5

 CE90A5

 CE7B97

 CEA5B3

 CE678A

 CEB9C0

 CE527C

 CECECE

 CE3E6F

 CEE2DB

 CE2961

 CEF7E9

 CE1453

 CEFFF7

 CE0046

 CEFFFF

Harmonies

Analogous

The Analogous color harmony consists of three colors that are next to each other on the color wheel.



BD94BC



CE90A5



D1918D

Triad

The Triadic color harmony groups three colors that are evenly spaced from another and form a triangle on the color wheel.



CE90A5



9CA676



62ABC8

Complementary

The Complementary color scheme is a pair of colors which are on the opposite of each other on the color wheel.



CE90A5



90CEB9

Split Complementary

Split-complementary colors differ from the complementary color scheme. The scheme consists of three colors, the original color and two neighbors of the complement color.



58AEB6



CE90A5



81AC86

Square

The Square scheme is like the rectangle color scheme, but the four colors are evenly spaced on the color wheel.



CE90A5



B59F72



67AE9E



7FA4D0

Rectangle

The Rectangle color scheme consists of four colors that form a rectangle on the color wheel.



CE90A5



CC9580



67AE9E



5CACC3

Sweetspot

The Sweet Spot groups the original color and five complimentary colors.



CE90A5



FFE8F0



B890CE



807176



000000



808080

Same Dimension

The Same Dimension uses a secret algorithm to generate beautiful new colors.



CE90A5



FFA3C2



CE9990



665C5F



A60038



26000D

Inverse Universe

The Inverse Universe completely reimagines the original color for something new.



CE90A5



FFA3C2



90C5CE



665C5F



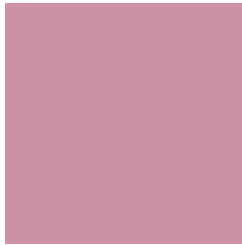
A60038



26000D

Previews

White Background



This preview shows how the Hex color CE90A5 looks on a white background.

Color Contrast Check

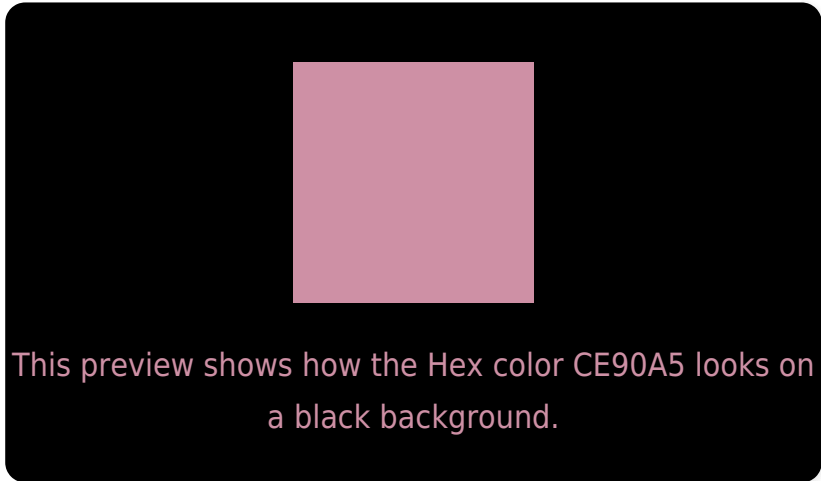
Large Text (above 18pt) WCAG AA × Fail

Any Text WCAG AA × Fail

Large Text (above 18pt) WCAG AAA × Fail

Any Text WCAG AAA × Fail

Black Background



Color Contrast Check

Large Text (above 18pt) WCAG AA ✓ Pass

Any Text WCAG AA ✓ Pass

Large Text (above 18pt) WCAG AAA ✓ Pass

Any Text WCAG AAA ✓ Pass

If you want to check with other color combinations, try the [Color Contrast Checker](#).

Hex CE90A5 Background



This preview shows how black text looks on a background with the Hex color CE90A5.

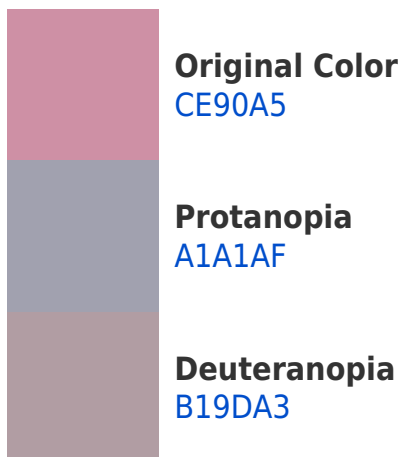



This preview shows how white text looks on a background with the Hex color CE90A5.

Color Blindness Simulation

Color vision deficiency is a very complex topic, and I could not describe the different causes any better than Wikipedia does, so if you want to learn more, you should check out their [article about color blindness](#).

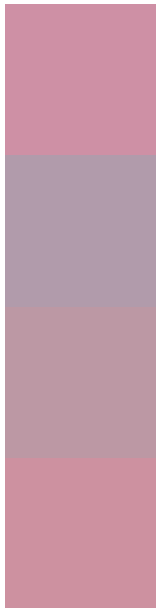
Dichromacy





Tritanopia
CD919D

Trichromacy



Original Color
CE90A5

Protanomaly
B19BAB

Deuteranomaly
BC98A4

Tritanomaly
CD91A0

Monochromacy



Original Color
CE90A5

Achromatopsia
A5A5A5

Achromatomaly
B49DA5

CSS Examples

Text

The CSS property to change the color of the text to Hex CE90A5 is called "color". The color property can be set on classes, ids or directly on the HTML element.

This example shows how text in the color #CE90A5 looks like.

```
.text, #text, p{  
    color:#CE90A5  
}
```

If you want to add a text shadow in that color use the text-shadow property, you can generate a text shadow directly with our [CSS Text Shadow Generator](#).

Here you see how black text with a 4 pixel #CE90A5 colored shadow looks like.

```
.shadow{ text-shadow: 4px 4px 2px #CE90A5
}
```

Border

The CSS property to change the border of an element to Hex CE90A5 is called "border". The border property can be set on classes, ids or directly on the HTML element.

This example shows the color as border, it can be applied via the CSS property "border" or "border-color".

```
.border, #border, table{ border:4px solid
#CE90A5 }
```

If only the border color should be changed use the property `border-color`.

```
.border{ border-color:#CE90A5 }
```

If you want to add a box shadow in that color use:

Here you see how a box with a 4 pixel #CE90A5 colored shadow looks like.

```
.boxshadow{ -moz-box-shadow:4px 4px 4px  
4px #CE90A5; -webkit-box-shadow:4px 4px  
4px 4px #CE90A5; box-shadow:4px 4px 4px  
4px #CE90A5 }
```

Background

The CSS property to change the background color of an element to Hex CE90A5 is called "background". The background property can be set on classes, ids or directly on the HTML element.

```
.background, #background, body{  
background:#CE90A5 }
```

If only the background color should be changed can be used:

```
.background{ background-color:#CE90A5 }
```

This example shows the color as background, it is applied via the CSS property "background".

To optimize and compress your CSS code, you can use our [online CSS compressor and optimizer](#) based on csstidy. If you want to create a linear or radial gradient as background or border, check our [CSS Gradient Generator](#).

Hey! You found this booklet interesting? Support Converting Colors with the new Membership Option!

The pro membership hides all ads, plus gives you double the colors in the color bucket, and more awesome pro features!

[Learn more, Memberships starting at \\$2.50/m!](#)

**Follow me
on Twitter!**

@ConvertingColor