

Converting Colors

Hex(CE9595)

Have a look what the booklet for
Hex(CE9595) contains.

Hex(CE9595)	3
<i>Conversions</i>	4
<i>Details</i>	6
<i>Harmonies</i>	11
<i>Previews</i>	23
<i>Color Blindness Simulation</i>	26
<i>CSS Examples</i>	29

Color

Hex(CE9595)

Conversions

Conversions Part 1

Format	Color
Hex	CE9595
RGB	206, 149, 149
RGB Percent	81%, 58%, 58%
CMY	0.1922, 0.4157, 0.4157
CMYK	0.00, 0.28, 0.28, 0.19
HSL	0°, 37%, 70%
HSV	0°, 28%, 81%
XYZ	41.6259, 36.7866, 33.3404
YIQ	166.0430, 33.9720, 12.0840

Conversions

Conversions Part 2

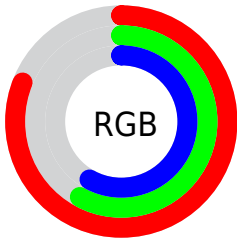
Format	Color
R _Y B	206, 149, 149
Decimal	13538709
CIE Lab	67.12, 21.44, 8.50
CIE LCh	67, 23.066, 21.627
Yxy	36.7866, 0.3725, 0.3292
Android (android.graphics.Color)	4291728789 (0xFFCE9595)
YUV	166.0430, -8.4022, 35.0423
Hunter-Lab	60.6520, 16.3648, 9.8647

Details

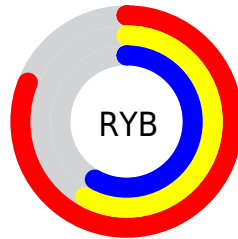
The Hex color **CE9595** is a light color, and the websafe version is hex **CC9999**. A complement of this color would be **95CECE**, and the grayscale version is **A6A6A6**.

A 20% lighter version of the original color is **FFCBCB**, and **966262** is the 20% darker color. If you saturate the color by 10%, you get **CE8080**, and if you desaturate by 10%, it is **CEAAAA**.

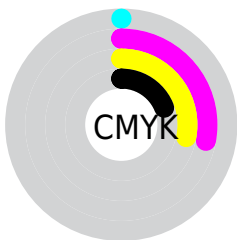
Distribution



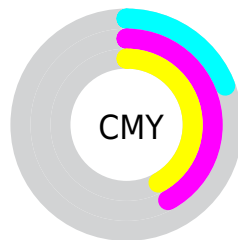
- Red (81%)
- Green (58%)
- Blue (58%)



- Red (81%)
- Yellow (58%)
- Blue (58%)



- Cyan (0%)
- Magenta (28%)
- Yellow (28%)
- Black (19%)



- Cyan (19%)
- Magenta (42%)
- Yellow (42%)

Brightness & Saturation Gradients

These gradients show how the Hex color CE9595 changes by changing the brightness by 10 percent. The first figure shows a shift by +10% for each color and the second figure -10%.

Similar to the brightness gradients but the following saturation gradients show a change of the Hex color CE9595 by changing the saturation by 10% instead.

 CE9595

 CE9595

FFFFFF

 B27B7B

 FFCBCB

 966262

 FFE8E7

 7C4A4B

 623234

 481C1F

 310606

 140000

 000000

 CE9595

 CE9595

 CE8080

 CEAAAA

 CE6C6C

 CEBEBE

 CE5757

 CED3D3

 CE4343

 CEE7E7

 CE2E2E

 CEF0FC

 CE1919

 CEFFFF

 CE0505

 CE0000

Harmonies

Analogous

The Analogous color harmony consists of three colors that are next to each other on the color wheel.



C995AA



CE9595



C89984

Triad

The Triadic color harmony groups three colors that are evenly spaced from another and form a triangle on the color wheel.



CE9595



8BAC89



82A7CC

Complementary

The Complementary color scheme is a pair of colors which are on the opposite of each other on the color wheel.



CE9595



95CECE

Split Complementary

Split-complementary colors differ from the complementary color scheme. The scheme consists of three colors, the original color and two neighbors of the complement color.



6DACC3



CE9595



75AF9D

Square

The Square scheme is like the rectangle color scheme, but the four colors are evenly spaced on the color wheel.



CE9595



A3A77D



68AFB2



9FA0CA

Rectangle

The Rectangle color scheme consists of four colors that form a rectangle on the color wheel.



CE9595



BE9E7C



68AFB2



7AA9CA

Sweetspot

The Sweet Spot groups the original color and five complimentary colors.



CE9595



FFEBE8



CE95CE



807373



000000



808080

Same Dimension

The Same Dimension uses a secret algorithm to generate beautiful new colors.



CE9595



FFABAB



CEB295



665C5C



A60000



260000

Inverse Universe

The Inverse Universe completely reimagines the original color for something new.



95CECE



ABFFFF



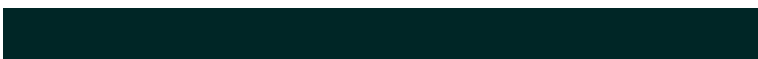
95B2CE



5C6666



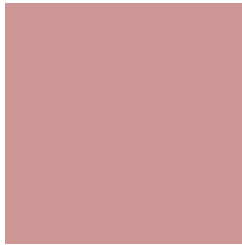
00A6A6



002626

Previews

White Background



This preview shows how the Hex color CE9595 looks on a white background.

Color Contrast Check

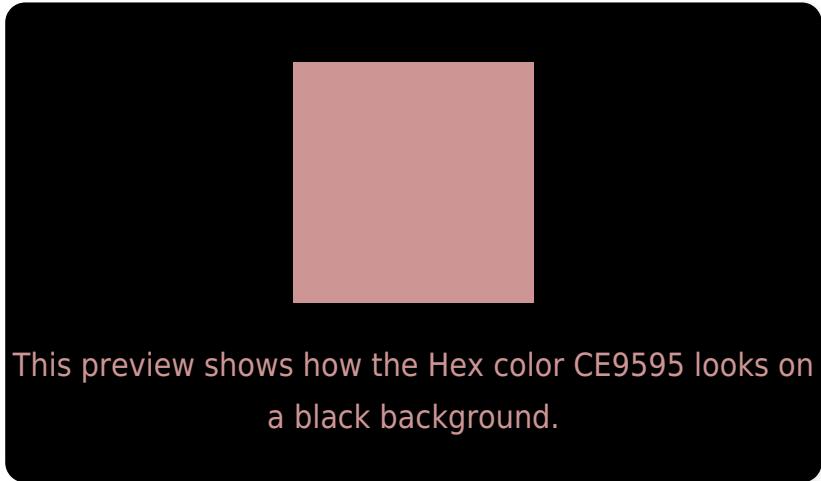
Large Text (above 18pt) WCAG AA × Fail

Any Text WCAG AA × Fail

Large Text (above 18pt) WCAG AAA × Fail

Any Text WCAG AAA × Fail

Black Background



Color Contrast Check

Large Text (above 18pt) WCAG AA ✓ Pass

Any Text WCAG AA ✓ Pass

Large Text (above 18pt) WCAG AAA ✓ Pass

Any Text WCAG AAA ✓ Pass

If you want to check with other color combinations, try the [Color Contrast Checker](#).

Hex CE9595 Background



This preview shows how black text looks on a background with the Hex color CE9595.

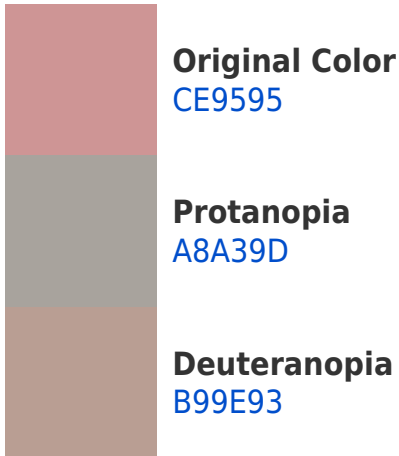



This preview shows how white text looks on a background with the Hex color CE9595.

Color Blindness Simulation

Color vision deficiency is a very complex topic, and I could not describe the different causes any better than Wikipedia does, so if you want to learn more, you should check out their [article about color blindness](#).

Dichromacy





Tritanopia
CF939F

Trichromacy



Original Color
CE9595

Protanomaly
B69E9A

Deuteranomaly
C19B94

Tritanomaly
CF949B

Monochromacy



Original Color
CE9595

Achromatopsia
A6A6A6

Achromatomaly
B5A0A0

CSS Examples

Text

The CSS property to change the color of the text to Hex CE9595 is called "color". The color property can be set on classes, ids or directly on the HTML element.

This example shows how text in the color #CE9595 looks like.

```
.text, #text, p{  
    color:#CE9595  
}
```

If you want to add a text shadow in that color use the text-shadow property, you can generate a text shadow directly with our [CSS Text Shadow Generator](#).

Here you see how black text with a 4 pixel #CE9595 colored shadow looks like.

```
.shadow{ text-shadow: 4px 4px 2px #CE9595
}
```

Border

The CSS property to change the border of an element to Hex CE9595 is called "border". The border property can be set on classes, ids or directly on the HTML element.

This example shows the color as border, it can be applied via the CSS property "border" or "border-color".

```
.border, #border, table{ border:4px solid
#CE9595 }
```

If only the border color should be changed use the property `border-color`.

```
.border{ border-color:#CE9595 }
```

If you want to add a box shadow in that color use:

Here you see how a box with a 4 pixel #CE9595 colored shadow looks like.

```
.boxshadow{ -moz-box-shadow:4px 4px 4px  
4px #CE9595; -webkit-box-shadow:4px 4px  
4px 4px #CE9595; box-shadow:4px 4px 4px  
4px #CE9595 }
```

Background

The CSS property to change the background color of an element to Hex CE9595 is called "background". The background property can be set on classes, ids or directly on the HTML element.

```
.background, #background, body{  
background:#CE9595 }
```

If only the background color should be changed can be used:

```
.background{ background-color:#CE9595 }
```

This example shows the color as background, it is applied via the CSS property "background".

To optimize and compress your CSS code, you can use our [online CSS compressor and optimizer](#) based on csstidy. If you want to create a linear or radial gradient as background or border, check our [CSS Gradient Generator](#).

Hey! You found this booklet interesting? Support Converting Colors with the new Membership Option!

The pro membership hides all ads, plus gives you double the colors in the color bucket, and more awesome pro features!

[Learn more, Memberships starting at \\$2.50/m!](#)

**Follow me
on Twitter!**

@ConvertingColor