

# Converting Colors

Hex(CE9693)

Have a look what the booklet for  
Hex(CE9693) contains.

<b>Hex(CE9693)</b> .....	3
<i><b>Conversions</b></i> .....	4
<i><b>Details</b></i> .....	6
<i><b>Harmonies</b></i> .....	11
<i><b>Previews</b></i> .....	23
<i><b>Color Blindness Simulation</b></i> .....	26
<i><b>CSS Examples</b></i> .....	29

# **Color**

**Hex(CE9693)**

# Conversions

## Conversions Part 1

<b>Format</b>	<b>Color</b>
Hex	CE9693
RGB	206, 150, 147
RGB Percent	81%, 59%, 58%
CMY	0.1922, 0.4118, 0.4235
CMYK	0.00, 0.27, 0.29, 0.19
HSL	3°, 38%, 69%
HSV	3°, 29%, 81%
XYZ	41.6264, 37.0411, 32.5595
YIQ	166.4020, 34.3390, 10.9390

# Conversions

## Conversions Part 2

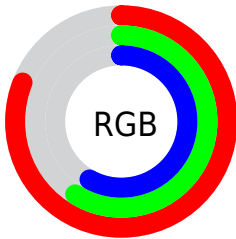
Format	Color
R <sub>Y</sub> B	206, 150, 147
Decimal	13538963
CIE Lab	67.31, 20.62, 9.89
CIE LCh	67, 22.870, 25.628
Yxy	37.0411, 0.3742, 0.3330
Android (android.graphics.Color)	4291729043 (0xFFCE9693)
YUV	166.4020, -9.5652, 34.7274
Hunter-Lab	60.8614, 15.5784, 10.8842

# Details

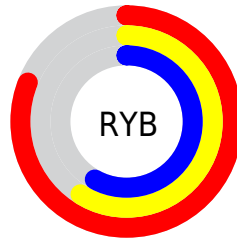
The Hex color **CE9693** is a light color, and the websafe version is hex **CC9999**. A complement of this color would be **93CBCE**, and the grayscale version is **A6A6A6**.

A 20% lighter version of the original color is **FFCCC9**, and **966360** is the 20% darker color. If you saturate the color by 10%, you get **CE827E**, and if you desaturate by 10%, it is **CEAAA8**.

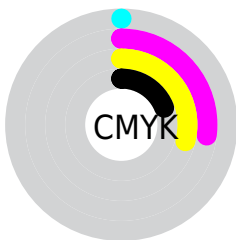
# Distribution



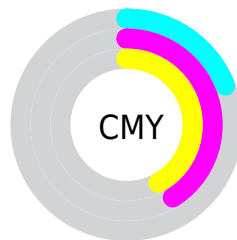
- Red (81%)
- Green (59%)
- Blue (58%)



- Red (81%)
- Yellow (59%)
- Blue (58%)



- Cyan (0%)
- Magenta (27%)
- Yellow (29%)
- Black (19%)



- Cyan (19%)
- Magenta (41%)
- Yellow (42%)

# Brightness & Saturation Gradients

These gradients show how the Hex color CE9693 changes by changing the brightness by 10 percent. The first figure shows a shift by +10% for each color and the second figure -10%.

Similar to the brightness gradients but the following saturation gradients show a change of the Hex color CE9693 by changing the saturation by 10% instead.



 CE9693

 CE9693

FFFFFF

 B27C79

 FFCCC9

 966360

 FFE9E5

 7C4B49

 623332

 481D1D

 310704

 140000

 000000

 CE9693

 CE9693

 CE827E

 CEAAA8

 CE6F6A

 CEBDBC

 CE5B55

 CED1D1

 CE4841

 CEE4E5

 CE342C

 CEF8FA

 CE2117

 CEFFFF

 CE0D03

 CE0A00

# Harmonies

## Analogous

The Analogous color harmony consists of three colors that are next to each other on the color wheel.



CB95A8



CE9693



C69B83

# Triad

The Triadic color harmony groups three colors that are evenly spaced from another and form a triangle on the color wheel.



CE9693



89AD8C



87A7CC

# Complementary

The Complementary color scheme is a pair of colors which are on the opposite of each other on the color wheel.



CE9693



93CBCE

# Split Complementary

Split-complementary colors differ from the complementary color scheme. The scheme consists of three colors, the original color and two neighbors of the complement color.



70ACC5



CE9693



74AFA0

# Square

The Square scheme is like the rectangle color scheme, but the four colors are evenly spaced on the color wheel.



CE9693



A0A87E



69AFB5



A3A0C9

# Rectangle

The Rectangle color scheme consists of four colors that form a rectangle on the color wheel.



CE9693



BC9F7C



69AFB5



7EA9CB

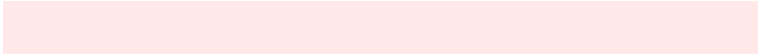


# Sweetspot

The Sweet Spot groups the original color and five complimentary colors.



CE9693



FFE9E8



CE93CB



807271



000000



808080



# Same Dimension

The Same Dimension uses a secret algorithm to generate beautiful new colors.



CE9693



FFADA8



CEB393



665C5C



A60800



260200



# Inverse Universe

The Inverse Universe completely reimagines the original color for something new.



93CBCE



A8FBFF



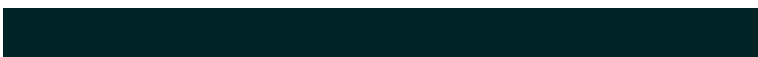
93AECE



5C6566



009DA6

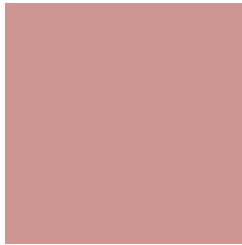


002426



# Previews

## White Background



This preview shows how the Hex color CE9693 looks on a white background.

## Color Contrast Check

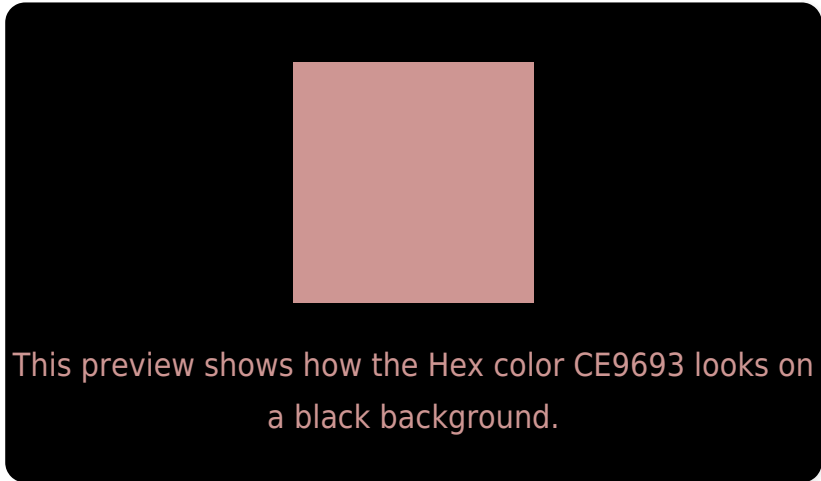
Large Text (above 18pt) WCAG AA × Fail

Any Text WCAG AA × Fail

Large Text (above 18pt) WCAG AAA × Fail

Any Text WCAG AAA × Fail

# Black Background



## Color Contrast Check

Large Text (above 18pt) WCAG AA ✓ Pass

Any Text WCAG AA ✓ Pass

Large Text (above 18pt) WCAG AAA ✓ Pass

Any Text WCAG AAA ✓ Pass

If you want to check with other color combinations, try the [Color Contrast Checker](#).



## Hex CE9693 Background



This preview shows how black text looks on a background with the Hex color CE9693.

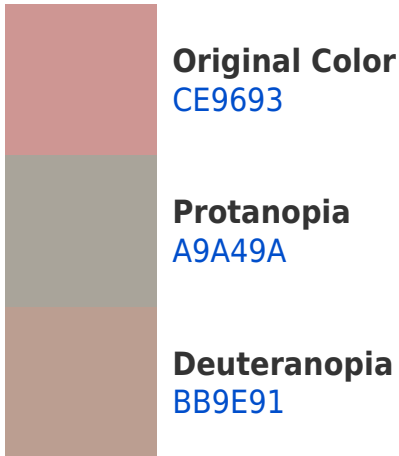


This preview shows how white text looks on a background with the Hex color CE9693.

# Color Blindness Simulation

Color vision deficiency is a very complex topic, and I could not describe the different causes any better than Wikipedia does, so if you want to learn more, you should check out their [article about color blindness](#).

## Dichromacy





**Tritanopia**  
CF949F

# Trichromacy



**Original Color**  
CE9693

**Protanomaly**  
B69F97

**Deuteranomaly**  
C29B92

**Tritanomaly**  
CF959B

# Monochromacy



**Original Color**  
CE9693

**Achromatopsia**  
A6A6A6

**Achromatomaly**  
B5A09F

# CSS Examples

## Text

The CSS property to change the color of the text to Hex CE9693 is called "color". The color property can be set on classes, ids or directly on the HTML element.

This example shows how text in the color #CE9693 looks like.

```
.text, #text, p{  
    color:#CE9693  
}
```

If you want to add a text shadow in that color use the text-shadow property, you can generate a text shadow directly with our [CSS Text Shadow Generator](#).

Here you see how black text with a 4 pixel #CE9693 colored shadow looks like.

```
.shadow{ text-shadow: 4px 4px 2px #CE9693
}
```

## Border

The CSS property to change the border of an element to Hex CE9693 is called "border". The border property can be set on classes, ids or directly on the HTML element.

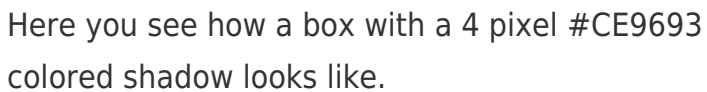
This example shows the color as border, it can be applied via the CSS property "border" or "border-color".

```
.border, #border, table{ border:4px solid
#CE9693 }
```

If only the border color should be changed use the property `border-color`.

```
.border{ border-color:#CE9693 }
```

If you want to add a box shadow in that color use:



Here you see how a box with a 4 pixel #CE9693 colored shadow looks like.

```
.boxshadow{ -moz-box-shadow:4px 4px 4px  
4px #CE9693; -webkit-box-shadow:4px 4px  
4px 4px #CE9693; box-shadow:4px 4px 4px  
4px #CE9693 }
```

# Background

The CSS property to change the background color of an element to Hex CE9693 is called "background". The background property can be set on classes, ids or directly on the HTML element.

```
.background, #background, body{  
background:#CE9693 }
```

If only the background color should be changed can be used:

```
.background{ background-color:#CE9693 }
```

This example shows the color as background, it is applied via the CSS property "background".

To optimize and compress your CSS code, you can use our [online CSS compressor and optimizer](#) based on csstidy. If you want to create a linear or radial gradient as background or border, check our [CSS Gradient Generator](#).



Hey! You found this booklet interesting? Support Converting Colors with the new Membership Option!

The pro membership hides all ads, plus gives you double the colors in the color bucket, and more awesome pro features!

**[Learn more, Memberships starting at \\$2.50/m!](#)**

**Follow me  
on Twitter!**

@ConvertingColor